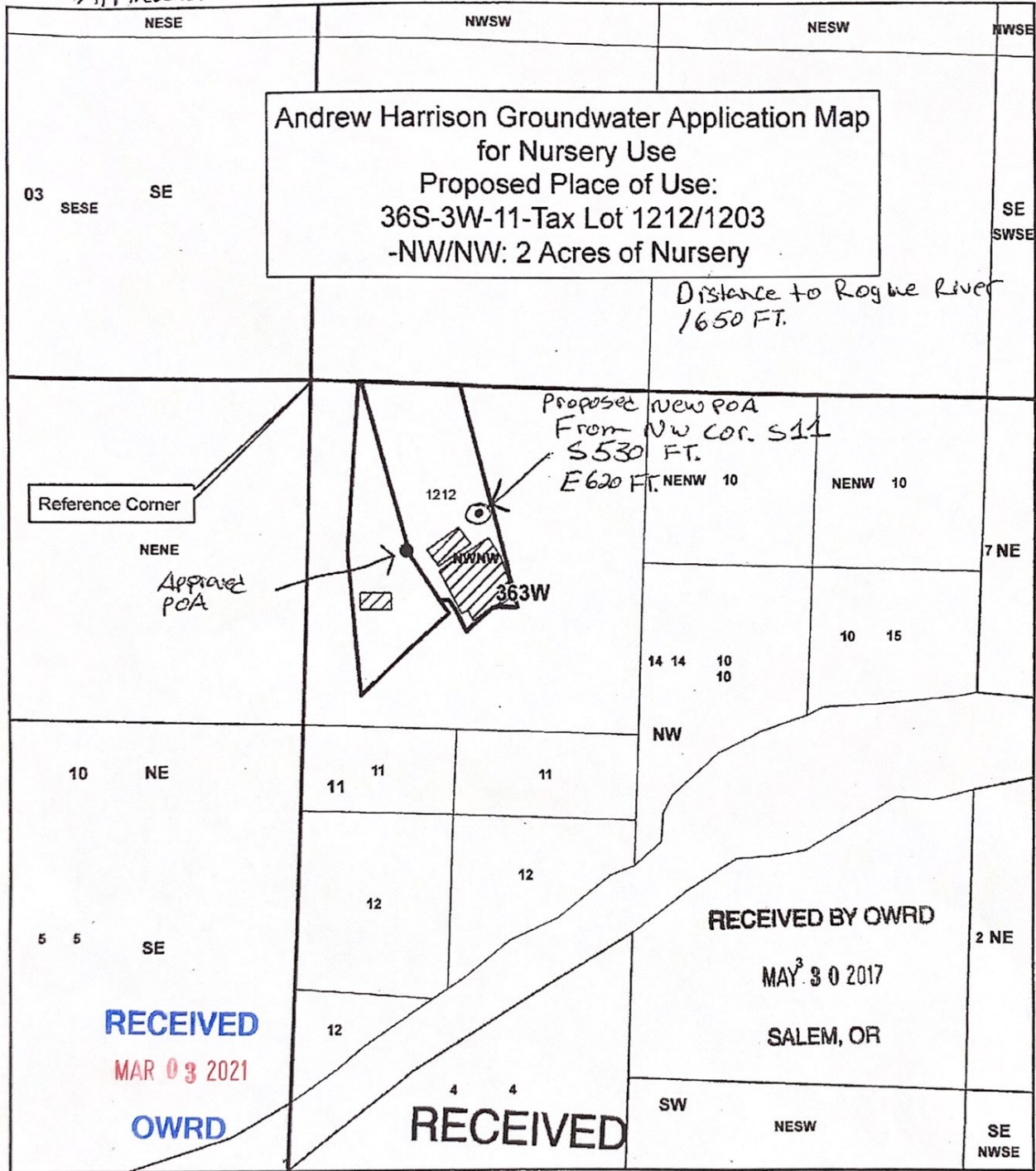


Application G-18705 Revised MAP



RECEIVED  
MAR 03 2021  
OWRD

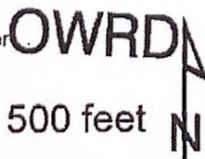
RECEIVED BY OWRD  
MAY 30 2017  
SALEM, OR

RECEIVED

- Legend**
- TL 1212
  - TL 1203
  - JACK 8234
  - POI Nursery
  - Well Location
  - Place of Use
  - Sections
  - Quarter Sections
  - Quarter Quarter Sections

JACK 8234  
is 637.5 ft S and  
363 ft E from NW Corner  
Section 11

JUN 25 2018



1 inch = 500 feet

RECEIVED  
JUN 22 2018

JACKSON COUNTY  
WATERMASTER

Prepared by Shavon Haynes

This map is based on a digital database compiled by Jackson County from a variety of sources. Jackson County cannot accept responsibility for errors, omissions, or positional accuracy. There are no warranties, expressed or implied.

Date: 05/26/2017 36-3W-11 TL 1212.mxd haynes

OWRD

G-18705