

POLK COUNTY  
SCALE 1" = 400'

R 75721

150

SE CORNER  
JAMES RIGGS  
DLC 75  
31 32  
6 5 NE COR.  
JAMES W. FREDERICK  
DLC 38

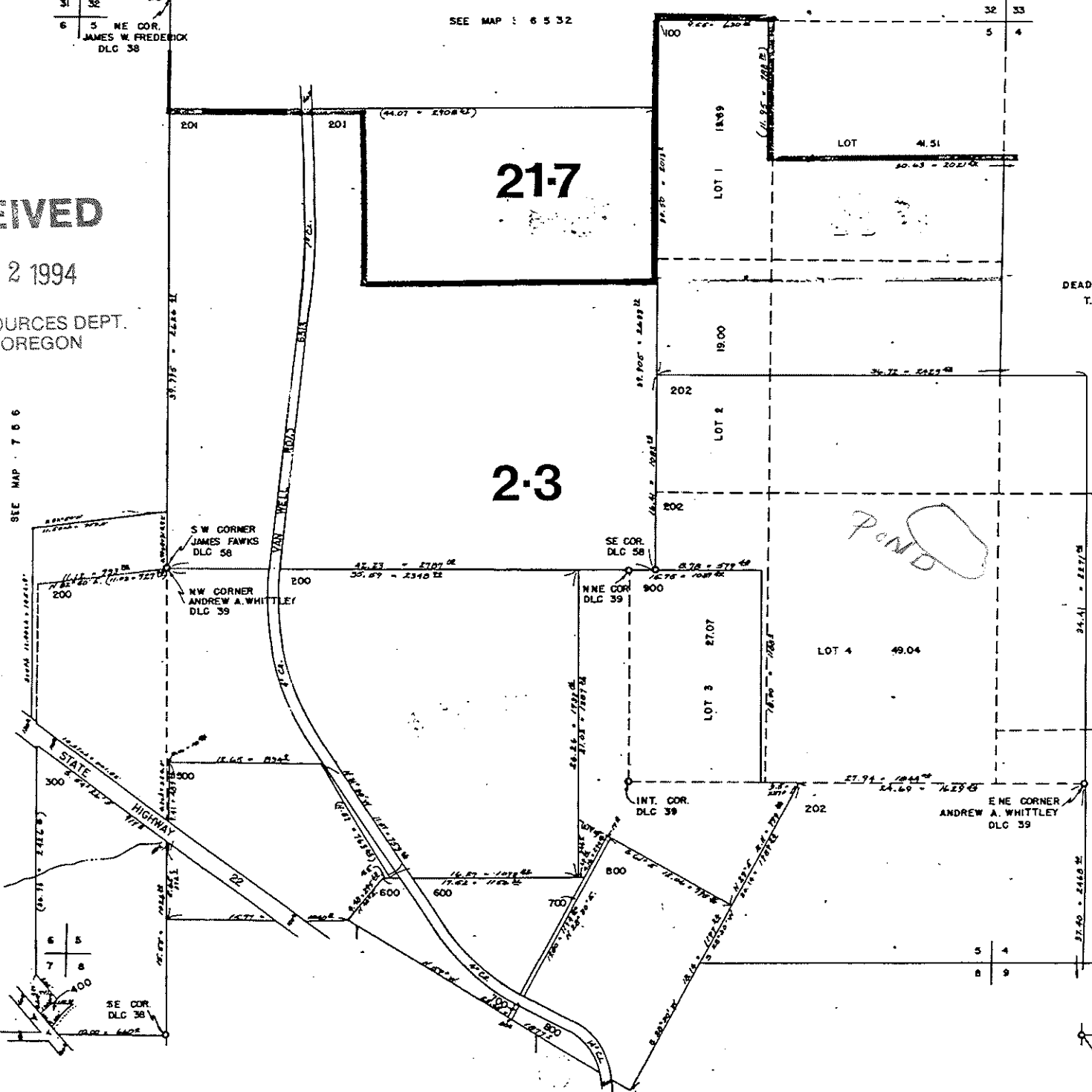
SEE MAP : 6 5 32

RECEIVED

DEC 22 1994

WATER RESOURCES DEPT.  
SALEM, OREGON

SEE MAP 7 5 6



DEAD NUMBERS  
T.L. 301

SEE MAP 7 5 4

POND

6 5  
7 8  
400  
SE COR.  
DLC 38

N W CORNER  
GEORGE  
DLC 4C