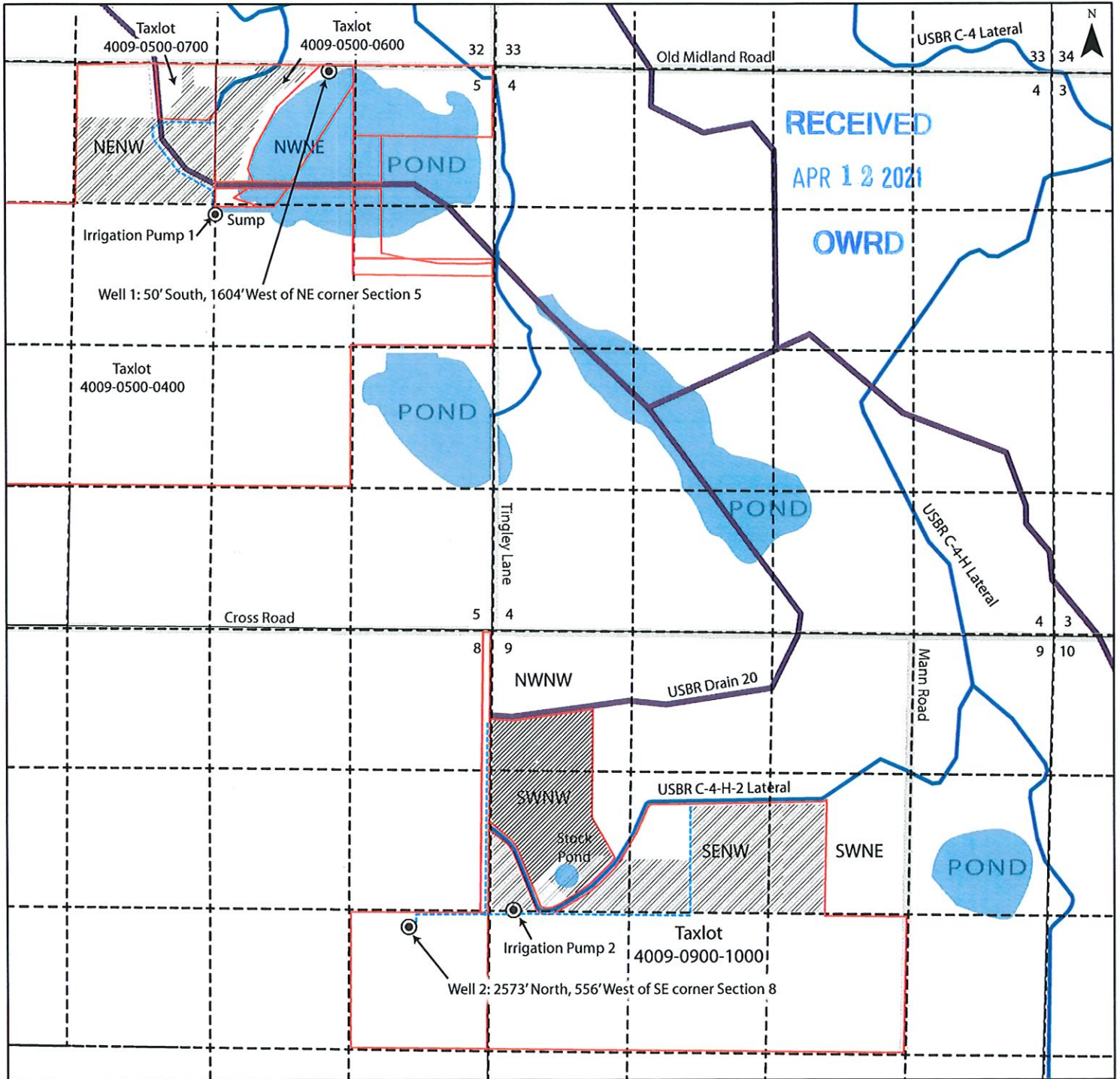


Drought Well Permit Application for Jani K. McPherson for lands in Klamath County: Township 40S, Range 9E, Willamette Meridian

Number of acres to be irrigated

NE 1/4 NW 1/4 Section 5, T40S, R9E, WM: 28.25 acres
 Area within taxlot #4009-0500-0400: 25 acres
 Area within taxlot #4009-0500-0700: 3.25 acres
 NW 1/4 NE 1/4 Section 5, T40S, R9E, WM: 10 acres
 Area within taxlot #4009-0500-0600: 10 acres

Area within taxlot #4009-00900-1000: 81.2 acres
 NW 1/4 NW 1/4 Section 9, T40S, R9E, WM: 12.8 acres
 SW 1/4 NW 1/4 Section 9, T40S, R9E, WM: 31.4 acres
 SE 1/4 NW 1/4 Section 9, T40S, R9E, WM: 24.3 acres
 SW1/4 NE 1/4 Section 9, T40S, R9E, WM: 12.7 acres



Legend

- Irrigation Drain
- Irrigation Ditch
- County Road
- Supply pipe for drought permit
- Taxlots
- Area of Use
- Easements

