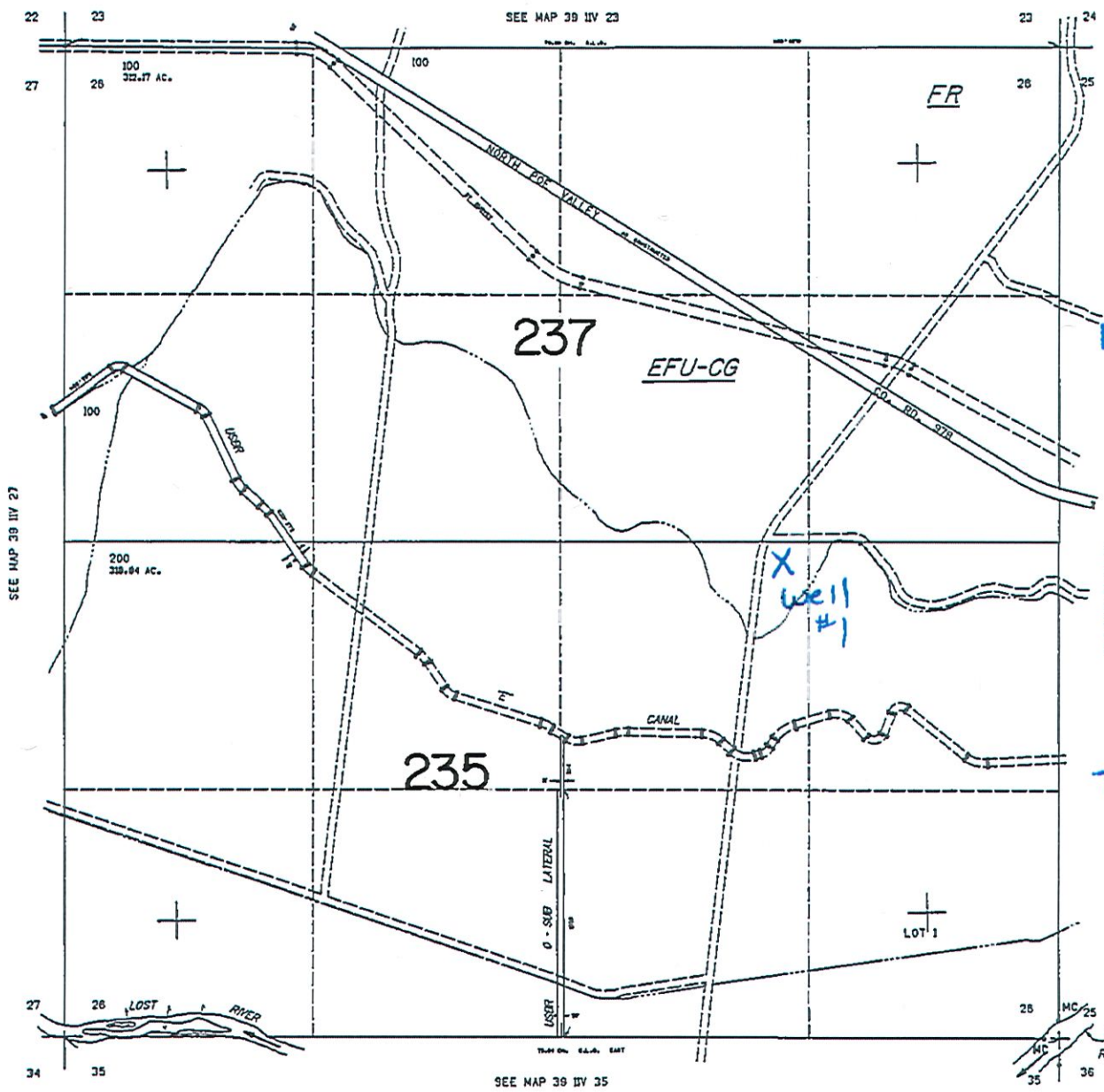


SECTION 26 T.39S. R.11 1/2E. W.M.
KLAMATH COUNTY
1"=400'

39 IIV 26

THIS MAP WAS PREPARED FOR
ASSESSMENT PURPOSE ONLY.

NORTH
T39S R11 1/2E
Sec 26



RECEIVED
JUN 01 2020
OWRD

Well # 1
139.3' South
221.1' West
FROM 1/4 1/4
of SESE

Scale
1" = 400'

Map 2 of 5

SECTION 22 T.39S. R.11 1/2E. W.M.
KLAMATH COUNTY

39 IIV 22

THIS MAP WAS PREPARED FOR
ASSESSMENT PURPOSE ONLY.

1"=400'

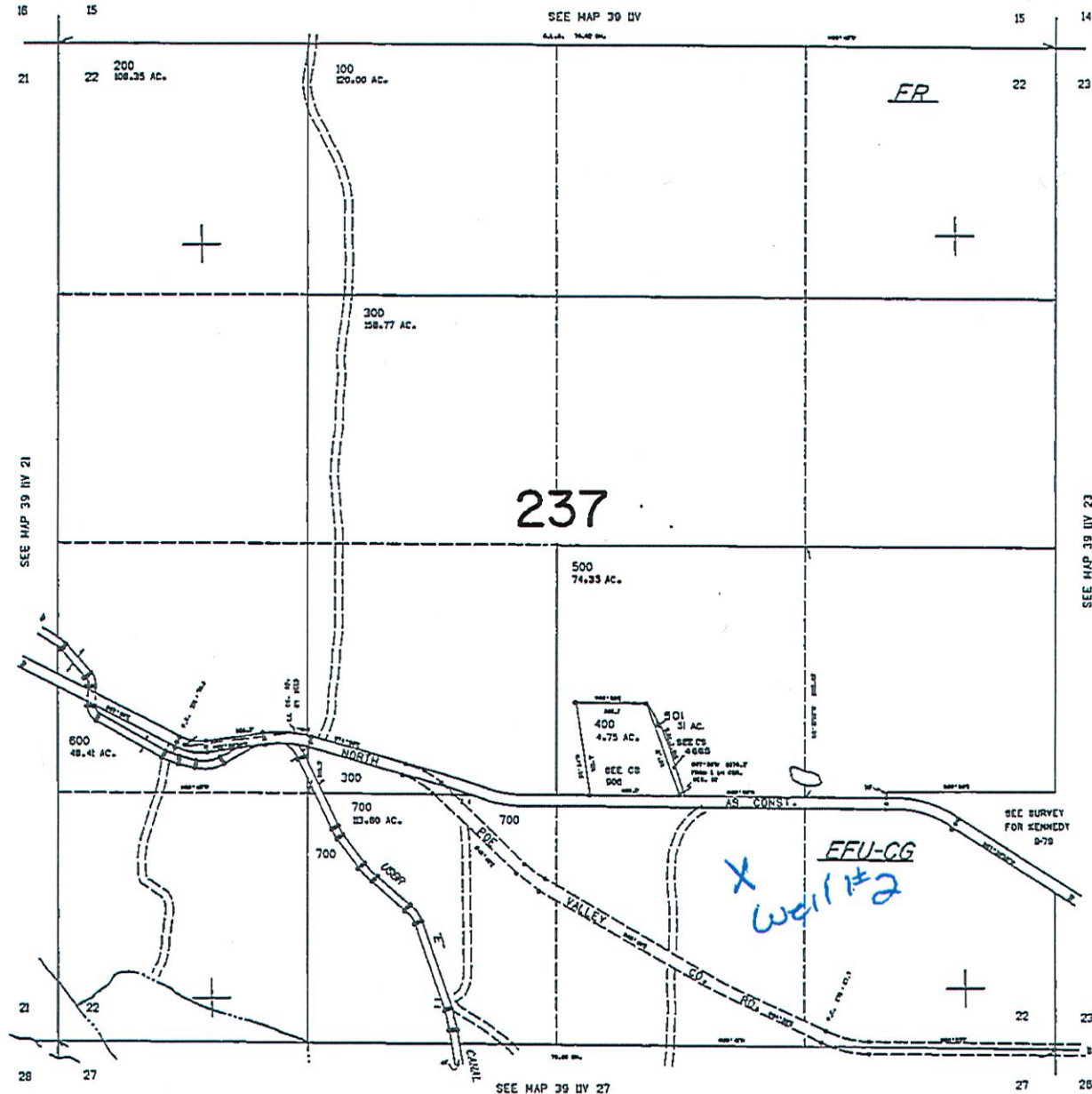
↑
NORTH
T39S 11 1/2 E
Sec 22

RECEIVED
JUN 01 2020
OWRD

Well # 2
Location

520.0' east
481.2' south
SE Center
Corner

Scale
1" = 400'



21,000

39 IIV 22