

Well # 1 of 3

SECTION 02 T.41S. R.11E. W.M.  
KLAMATH COUNTY  
1"=400'

41 11 02

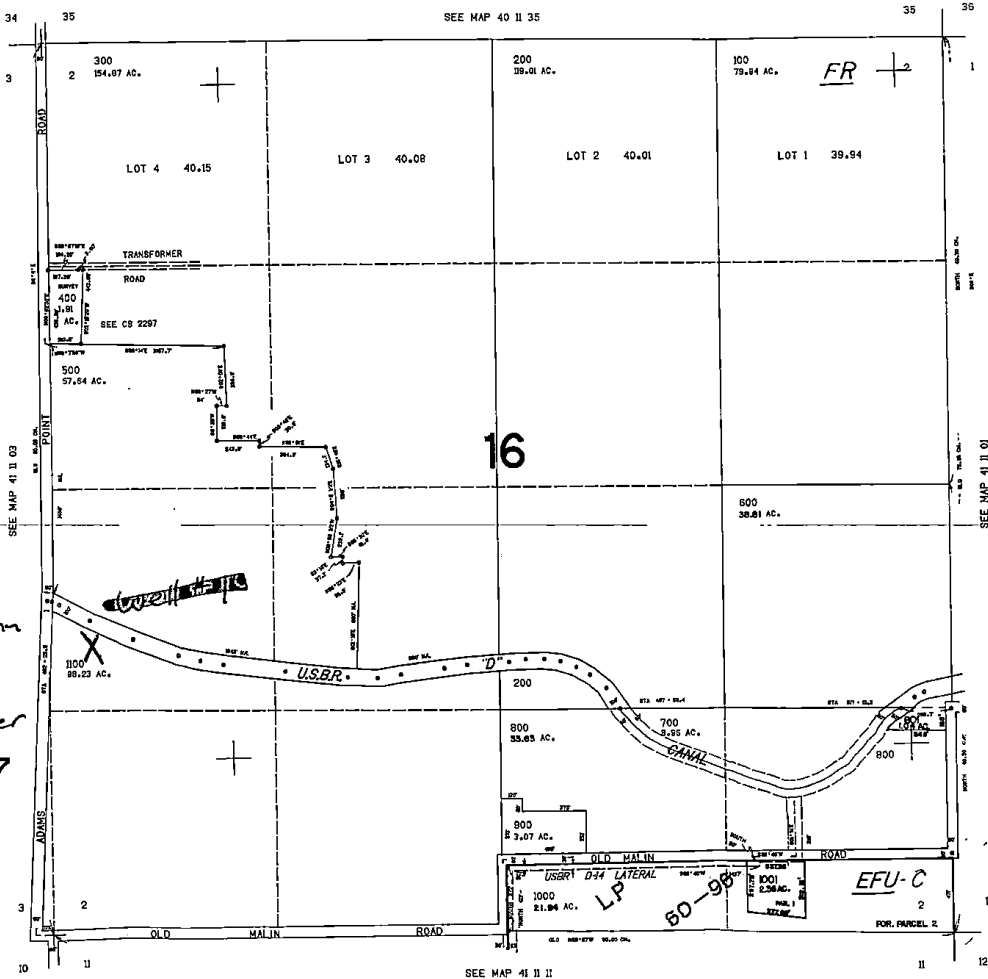
THIS MAP WAS PREPARED FOR  
ASSESSMENT PURPOSE ONLY.

D-18881-D

NORTH  
T41S R11E  
Sec 2

Well location  
300' E  
1700' N  
SW CORNER  
of Sec 27

Scale  
1" = 880'



CANCELLED MAP  
604

RECEIVED  
MAY 25 2018

OWRD

133.000

1723.000

41 11 02

Map 2 of 3

REVISED 05-17-2016  
THIS MAP WAS PREPARED FOR  
ASSESSMENT PURPOSE ONLY

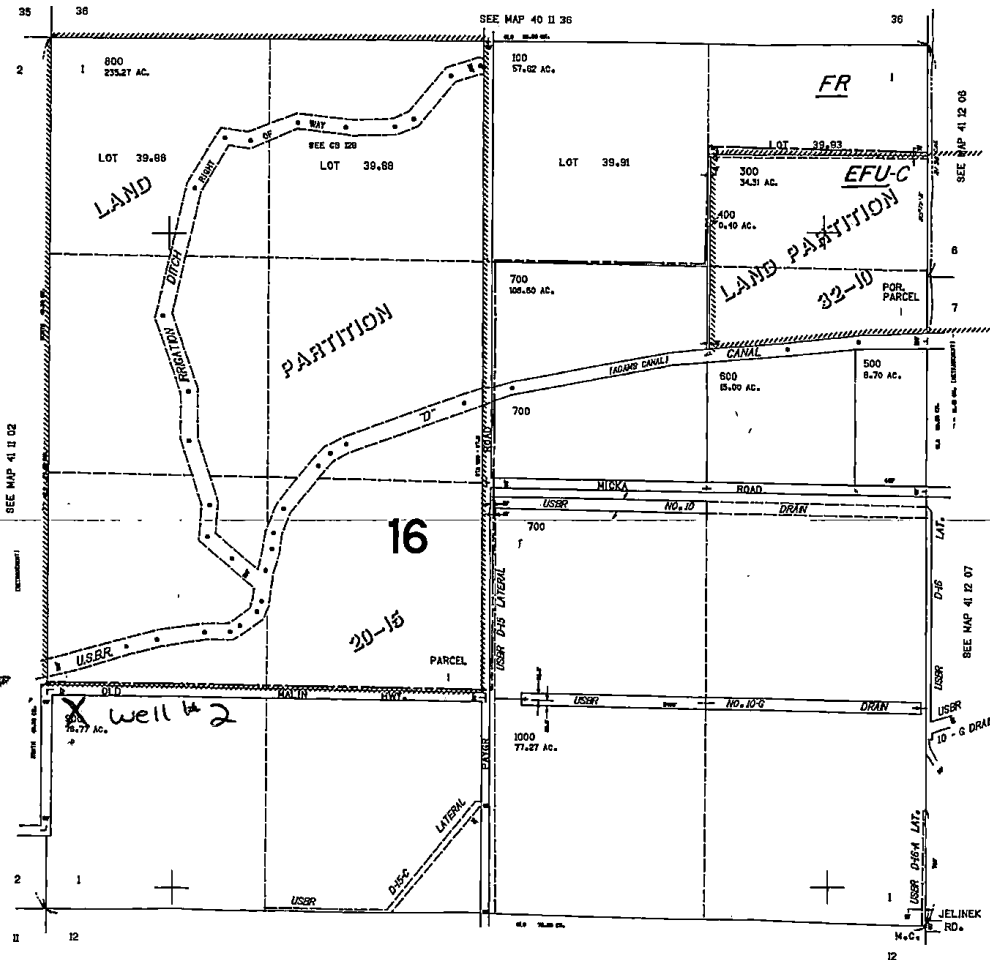
SECTION 01 T.41S. R.11E. W.M.  
KLAMATH COUNTY

41 11 01

6-18892

↑  
NORTH

T41S R11E  
Sec 1



Well location  
150' E  
1200' N  
S.W. corner  
Sec. 1

Scale  
1" = 880'

CANCELLED NO.  
200

RECEIVED

MAY 25 2018

OWRD

132000

41 11 01

Well 3 of 3

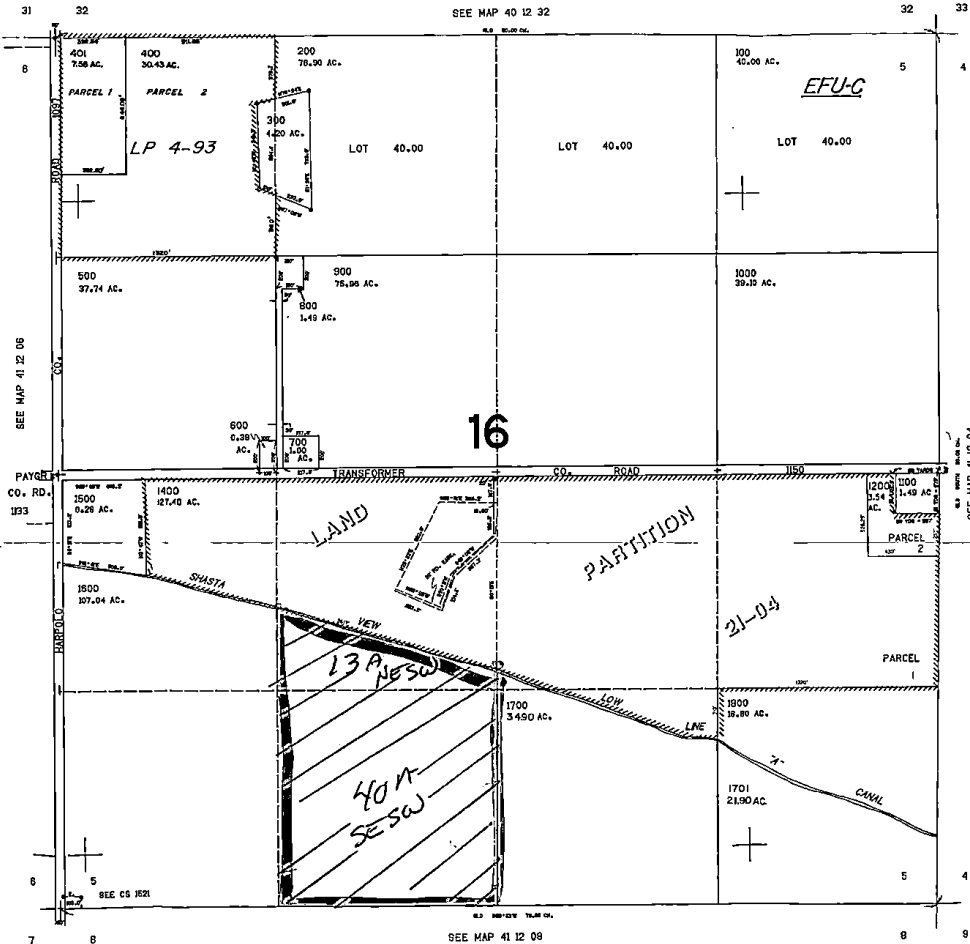
618682

SECTION 05 T.41S. R.12E. W.M.  
KLAMATH COUNTY

41 12 05

THIS MAP WAS PREPARED FOR  
ASSESSMENT PURPOSE ONLY

1"=400'



CANCELLED NO.  
1300

16

RECEIVED

MAY 25 2018

OWRD

138,000

41 12 05

NORTH

T41S R12E  
SEC 5  
TL 1600

NESW - 13A  
SESW 40A

Scale

1" = 880'

13,000

SEE MAP 41 12 09

SEE MAP 41 12 04

SEE MAP 40 12 32

SEE MAP 41 12 06

SEE CS 1021