

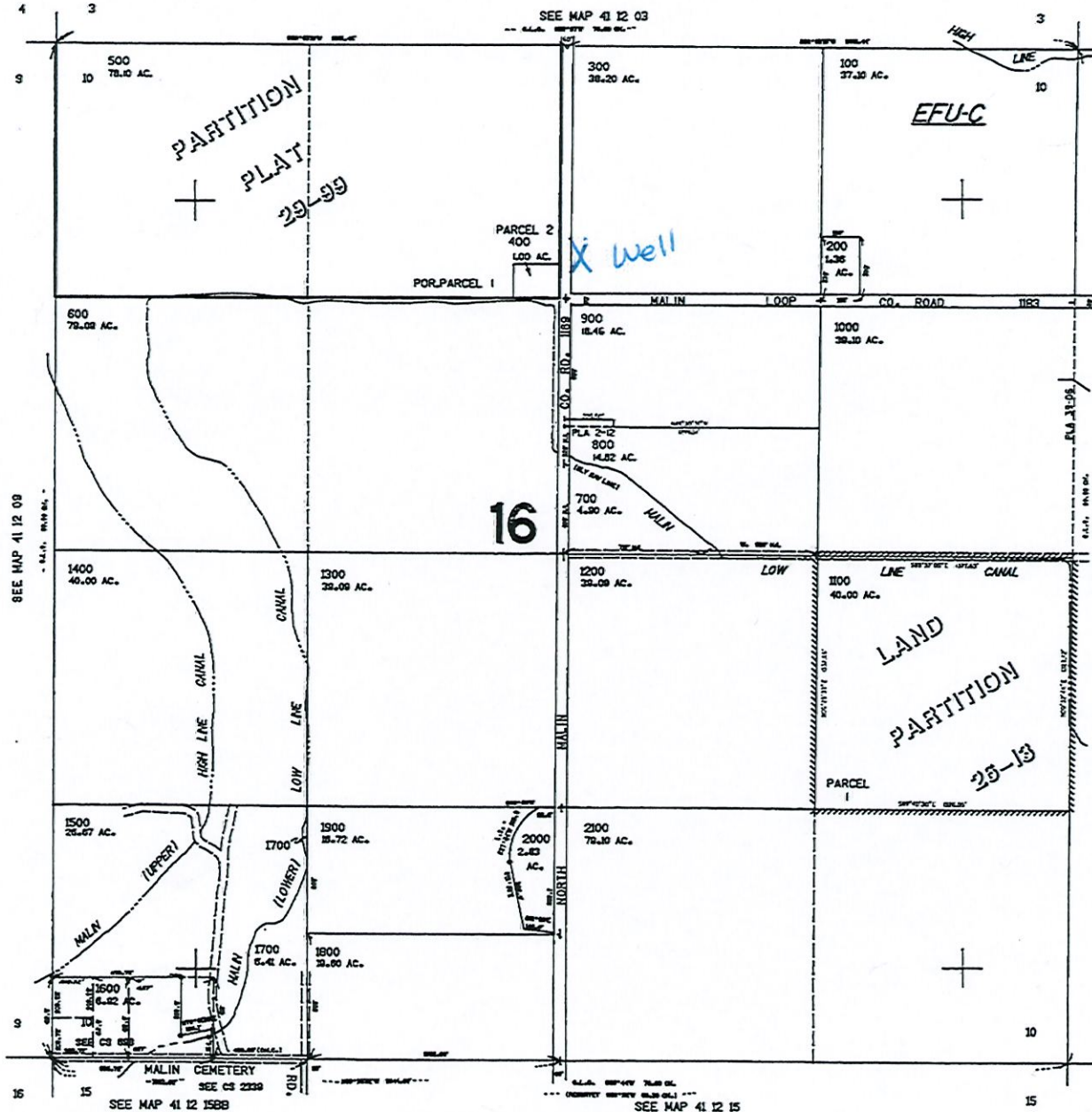
REVISED 05-07-14
THIS MAP WAS PREPARED FOR
ASSESSMENT PURPOSE ONLY

SECTION 10 T.41S. R.12E. W.M.
KLAMATH COUNTY
T-400'

MAP 1 OF 2

MAP CREATED 04/16/2021

NORTH
↑
T41S R12E
SEC-10



RECEIVED
APR 26 2021
OWRD

Well location
KLAM 53757
Lat 42.0317
Long -121.4084
OR

Scale
1" = 880'

1764200

RECEIVED

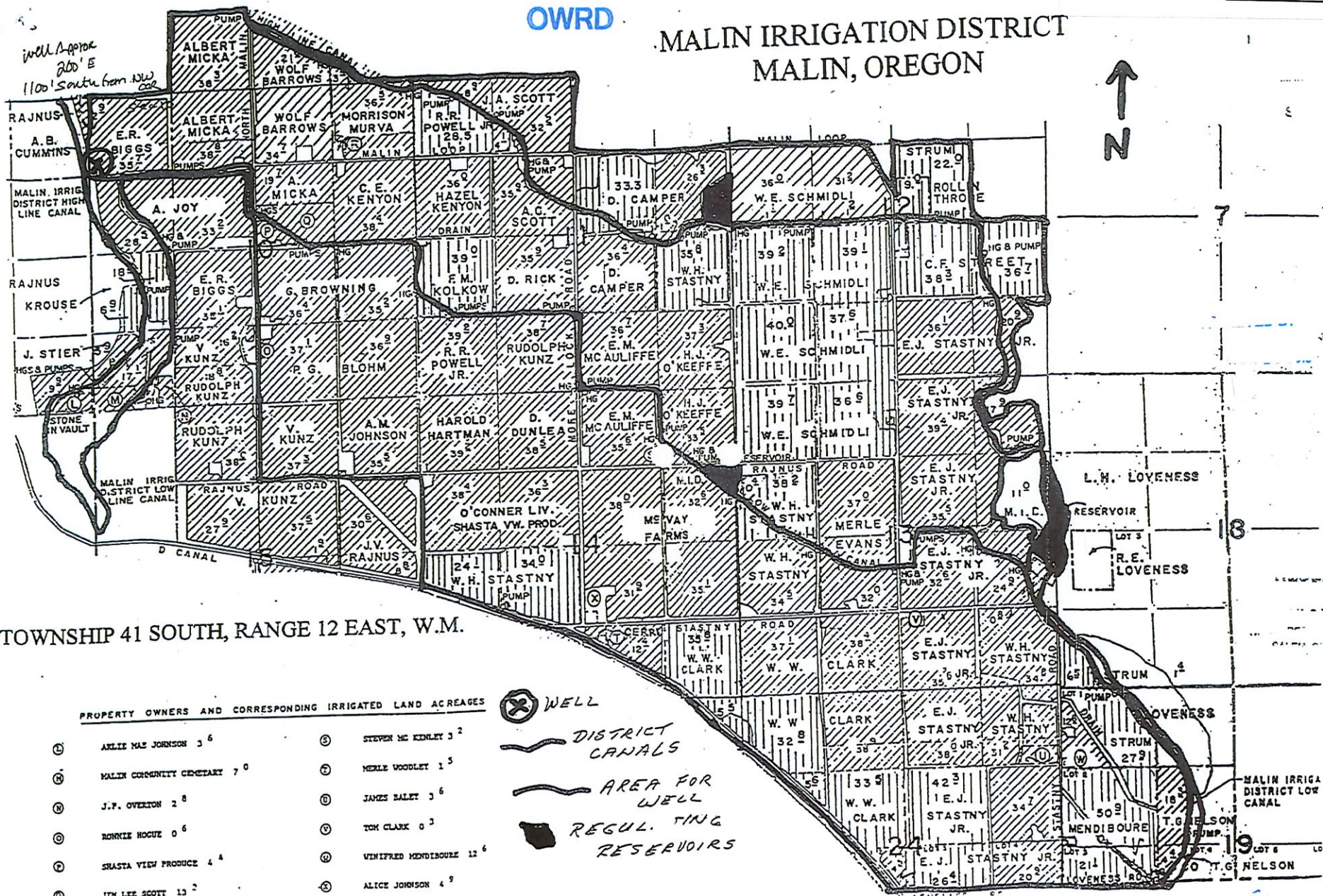
APR 26 2021

MAP 2 OF 2

MAP CREATED DISTRICT MAP

OWRD

MALIN IRRIGATION DISTRICT
MALIN, OREGON



TOWNSHIP 41 SOUTH, RANGE 12 EAST, W.M.

PROPERTY OWNERS AND CORRESPONDING IRRIGATED LAND ACRESAGES

Ⓐ AKLIE MAE JOHNSON 3 ⁶	Ⓔ STEVEN MC KINLEY 3 ²
Ⓑ MALIN COMMUNITY CEMETARY 7 ⁰	Ⓕ MERLE WOODLEY 1 ⁵
Ⓒ J.P. OVERTON 2 ⁸	Ⓖ JAMES BAILEY 3 ⁶
Ⓓ RONNIE HOGUE 0 ⁶	Ⓗ TOM CLARK 0 ³
Ⓘ SHASTA VIEW PRODUCE 4 ⁴	Ⓙ WINIFRED MENDIBOURE 12 ⁶
Ⓚ JIN LEE SCOTT 13 ²	Ⓛ ALICE JOHNSON 4 ⁹

- ⊗ WELL
- DISTRICT CANALS
- AREA FOR WELL
- REGULATING RESERVOIRS

G-77EX

FE

acre-feet for each acre irrigated during the irrigation season of each year.

THE PLACE OF USE IS LOCATED AS FOLLOWS:

SE ¼ SW ¼ 38.3 ACRES
SW ¼ SE ¼ 21.0 ACRES
SECTION 3

NE ¼ NE ¼ 2.9 ACRES
SE ¼ SE ¼ 9.9 ACRES
SECTION 9

NE ¼ NE ¼ 36.5 ACRES
NW ¼ NE ¼ 34.7 ACRES
SW ¼ NE ¼ 19.7 ACRES
SE ¼ NE ¼ 38.4 ACRES
NE ¼ NW ¼ 38.8 ACRES
NW ¼ NW ¼ 35.7 ACRES
SW ¼ NW ¼ 28.5 ACRES
SE ¼ NW ¼ 33.2 ACRES
NE ¼ SW ¼ 35.1 ACRES
NW ¼ SW ¼ 24.9 ACRES
SW ¼ SW ¼ 23.0 ACRES
SE ¼ SW ¼ 35.0 ACRES
NE ¼ SE ¼ 35.2 ACRES
NW ¼ SE ¼ 36.4 ACRES
SW ¼ SE ¼ 37.1 ACRES
SE ¼ SE ¼ 36.9 ACRES
SECTION 10

SW ¼ NE ¼ 33.3 ACRES
SE ¼ NE ¼ 26.3 ACRES
NE ¼ NW ¼ 32.2 ACRES
NW ¼ NW ¼ 37.1 ACRES
SW ¼ NW ¼ 35.1 ACRES
SE ¼ NW ¼ 35.9 ACRES
NE ¼ SW ¼ 35.9 ACRES
NW ¼ SW ¼ 37.9 ACRES
SW ¼ SW ¼ 39.2 ACRES
SE ¼ SW ¼ 38.7 ACRES
NE ¼ SE ¼ 35.8 ACRES
NW ¼ SE ¼ 36.4 ACRES
SW ¼ SE ¼ 36.7 ACRES
SE ¼ SE ¼ 37.3 ACRES
SECTION 11

SW ¼ NE ¼ 31.0 ACRES
SW ¼ NW ¼ 37.1 ACRES
SE ¼ NW ¼ 32.4 ACRES

NE ¼ SW ¼ 38.0 ACRES
NW ¼ SW ¼ 37.0 ACRES
SW ¼ SW ¼ 36.5 ACRES
SE ¼ SW ¼ 37.2 ACRES
NE ¼ SE ¼ 36.7 ACRES
NW ¼ SE ¼ 35.9 ACRES
SW ¼ SE ¼ 36.1 ACRES
SE ¼ SE ¼ 20.9 ACRES

SECTION 12

NE ¼ NE ¼ 17.9 ACRES
NW ¼ NE ¼ 39.4 ACRES
SW ¼ NE ¼ 35.5 ACRES
SE ¼ NE ¼ 11.0 ACRES
NE ¼ NW ¼ 35.6 ACRES
NW ¼ NW ¼ 39.5 ACRES
SW ¼ NW ¼ 35.2 ACRES
SE ¼ NW ¼ 37.0 ACRES
NE ¼ SW ¼ 32.0 ACRES
NW ¼ SW ¼ 34.5 ACRES
SW ¼ SW ¼ 37.1 ACRES
SE ¼ SW ¼ 38.4 ACRES
NE ¼ SE ¼ 24.9 ACRES
NW ¼ SE ¼ 32.6 ACRES
SW ¼ SE ¼ 35.6 ACRES
SE ¼ SE ¼ 35.6 ACRES

SECTION 13

NE ¼ NE ¼ 33.5 ACRES
NW ¼ NE ¼ 35.6 ACRES
SW ¼ NE ¼ 38.0 ACRES
SE ¼ NE ¼ 32.6 ACRES
NE ¼ NW ¼ 38.5 ACRES
NW ¼ NW ¼ 39.2 ACRES
SW ¼ NW ¼ 38.4 ACRES
SE ¼ NW ¼ 36.3 ACRES
NE ¼ SW ¼ 34.0 ACRES
NW ¼ SW ¼ 24.1 ACRES
NE ¼ SE ¼ 35.1 ACRES
NW ¼ SE ¼ 31.9 ACRES
SW ¼ SE ¼ 12.4 ACRES
SE ¼ SE ¼ 35.8 ACRES

SECTION 14

NE ¼ NE ¼ 35.1 ACRES
NW ¼ NE ¼ 37.3 ACRES
NE ¼ NW ¼ 37.8 ACRES
SE ¼ NW ¼ 27.9 ACRES
NE ¼ SE ¼ 8.8 ACRES
SW ¼ NE ¼ 37.4 ACRES

RECEIVED
APR 26 2021
OWRD

NW ¼ SE ¼ 1.9 ACRES
SE ¼ NE ¼ 30.6 ACRES
SECTION 15

NE ¼ NE ¼ 5.5 ACRES
SECTION 23

NE ¼ NE ¼ 31.2 ACRES
NW ¼ NE ¼ 38.0 ACRES
SW ¼ NE ¼ 38.1 ACRES
SE ¼ NE ¼ 34.6 ACRES
NE ¼ NW ¼ 38.9 ACRES
NW ¼ NW ¼ 32.8 ACRES
SW ¼ NW ¼ 5.6 ACRES
SE ¼ NW ¼ 33.5 ACRES
NE ¼ SW ¼ 4.5 ACRES
NE ¼ SE ¼ 20.9 ACRES
NW ¼ SE ¼ 22.9 ACRES
SECTION 24

TOWNSHIP 41 SOUTH, RANGE 12 EAST, W.M.

SW ¼ SW ¼ 6.5 ACRES
SECTION 18

NW ¼ NW ¼ 40.7 ACRES
SW ¼ NW ¼ 30.9 ACRES
SE ¼ NW ¼ 18.3 ACRES
NE ¼ SW ¼ 4.6 ACRES
NW ¼ SW ¼ 4.4 ACRES
SECTION 19

TOWNSHIP 41 SOUTH, RANGE 13 EAST, W.M.

Measurement, recording and reporting conditions:

- A. Before water use may begin under this permit, the permittee shall install a totalizing flow meter at each point of appropriation. The permittee shall maintain the meter in good working order.
- B. The permittee shall keep a complete record of the amount of water used each month and shall submit a report which includes the recorded water use measurements to the Department by November 15, 2015. Further, the Director may require the permittee to report general water-use information, including the place and nature of use of water under the permit.
- C. The permittee shall allow the watermaster access to the meter; provided however, where any meter is located within a private structure, the watermaster shall request access upon reasonable notice.

RECEIVED

APR 26 2021

OWRD