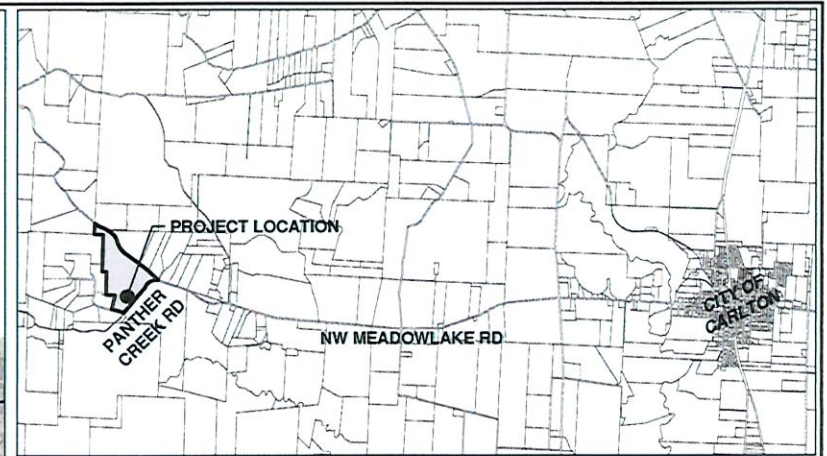
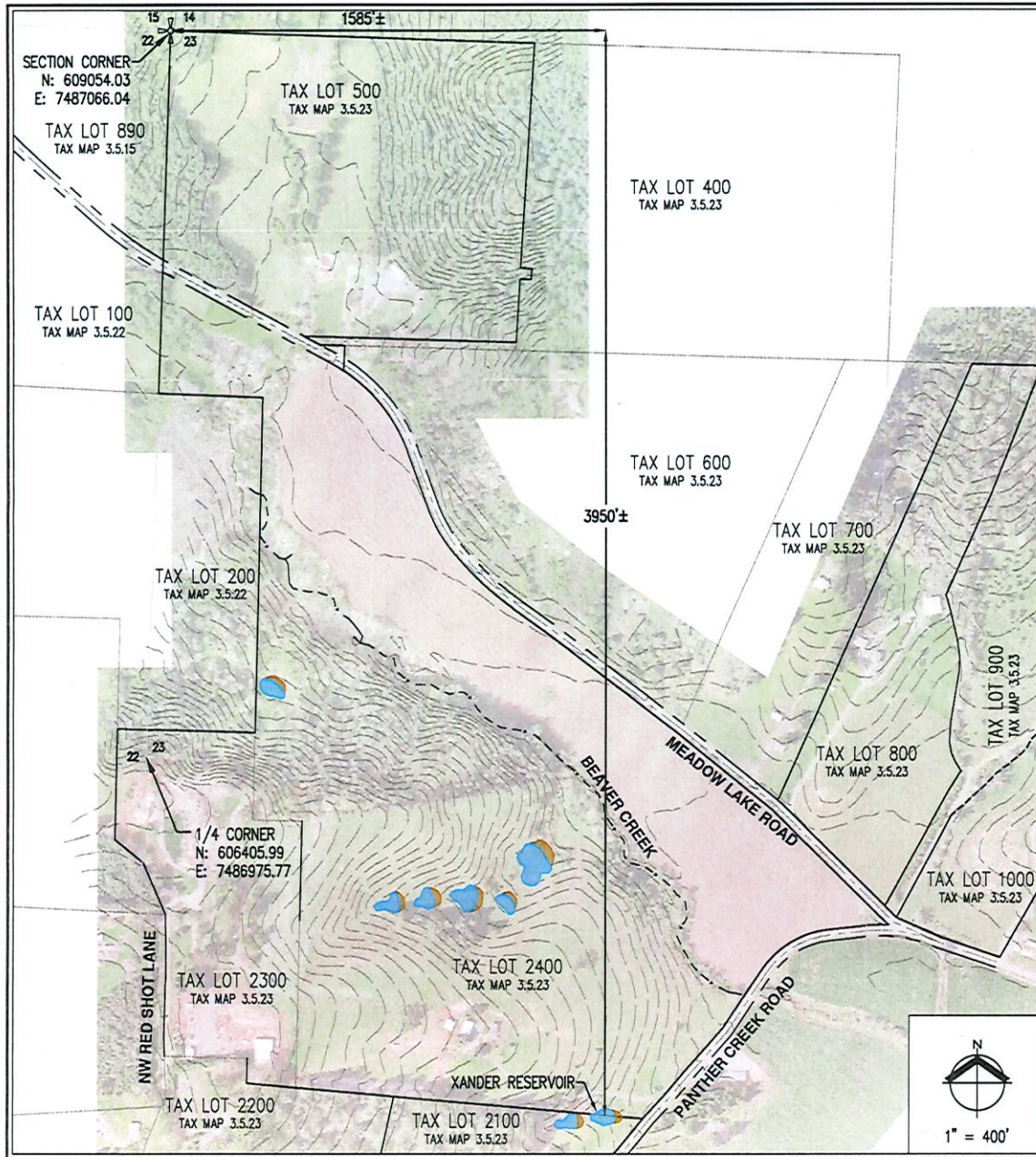


MAY 19 2021

OWRD



VICINITY MAP
1" = 5,000'

RESERVOIR DATA:

RESERVOIR LOCATED IN THE SOUTHWEST 1/4 OF SECTION 23,
TOWNSHIP 3 SOUTH, RANGE 5 WEST, WILLAMETTE MERIDIAN,
YAMHILL COUNTY, OREGON.

1,585'± EAST OF NORTHWEST CORNER OF SECTION 23
3,950'± SOUTH OF NORTHWEST CORNER OF SECTION 23