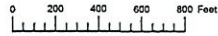


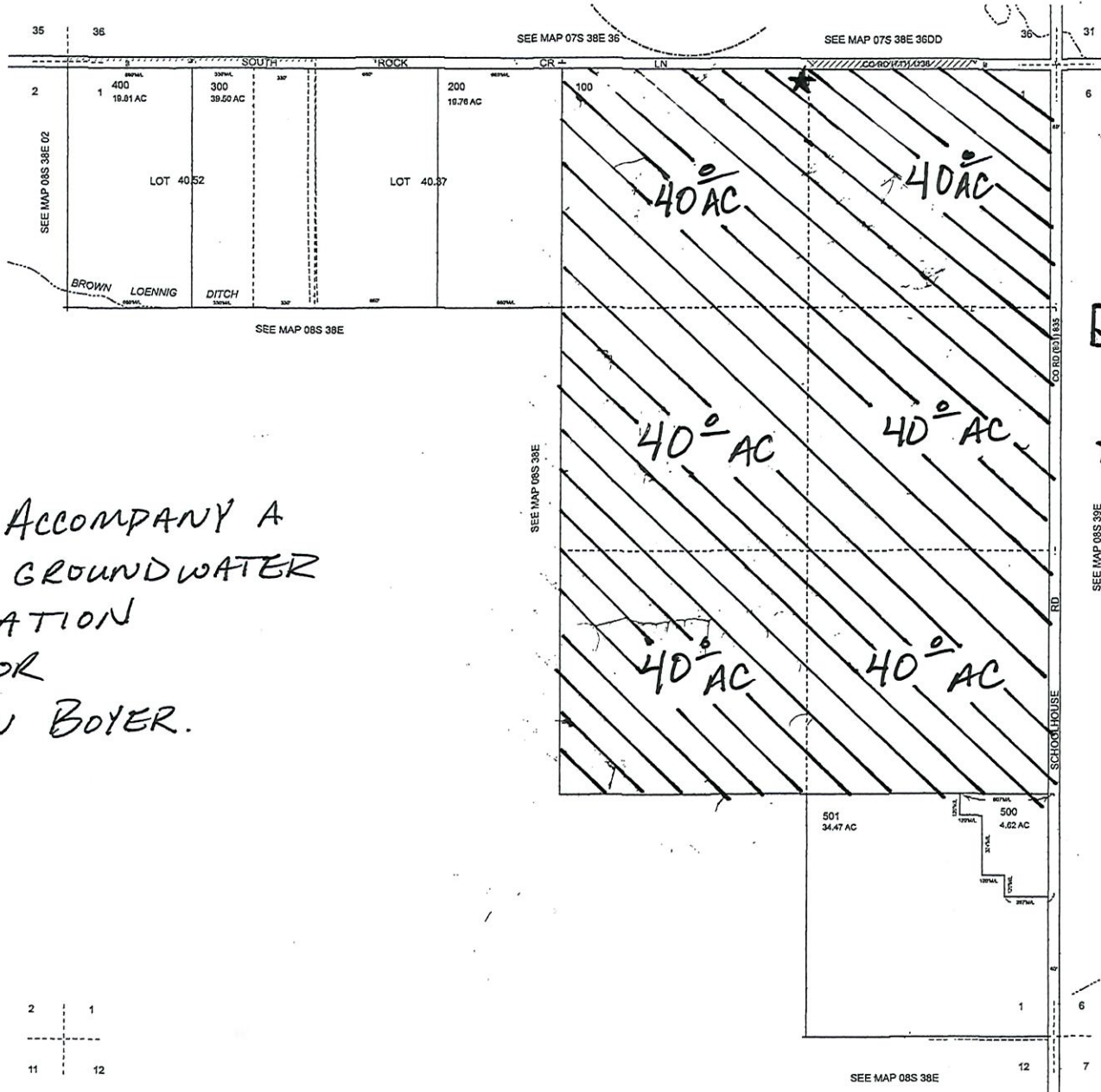
THIS MAP WAS PREPARED FOR
ASSESSMENT PURPOSE ONLY




SECTION 1 T.8S. R.38E. W.M.
BAKER COUNTY
1" = 400'

08S38E01

RECEIVED
MAY 24 2021
OWRD



 240° AC
SUPP. IRR.

★ Well 01
44.904950, -117.998100

MAP TO ACCOMPANY A
NEW GROUNDWATER
APPLICATION
FOR
JOHN BOYER.



Revised: DBJ
10/02/2007

08S38E01