



Surface Water Application Map
Henrikson
T.27S R.6W Section 5
Douglas County
Scale 1"=400'

RECEIVED

JUN 21 2021

OWRD

**Existing
Water Rights**

Certificate 49775

27.78 acres

Primary

Certificate 91667

18.6 acres

Supplemental

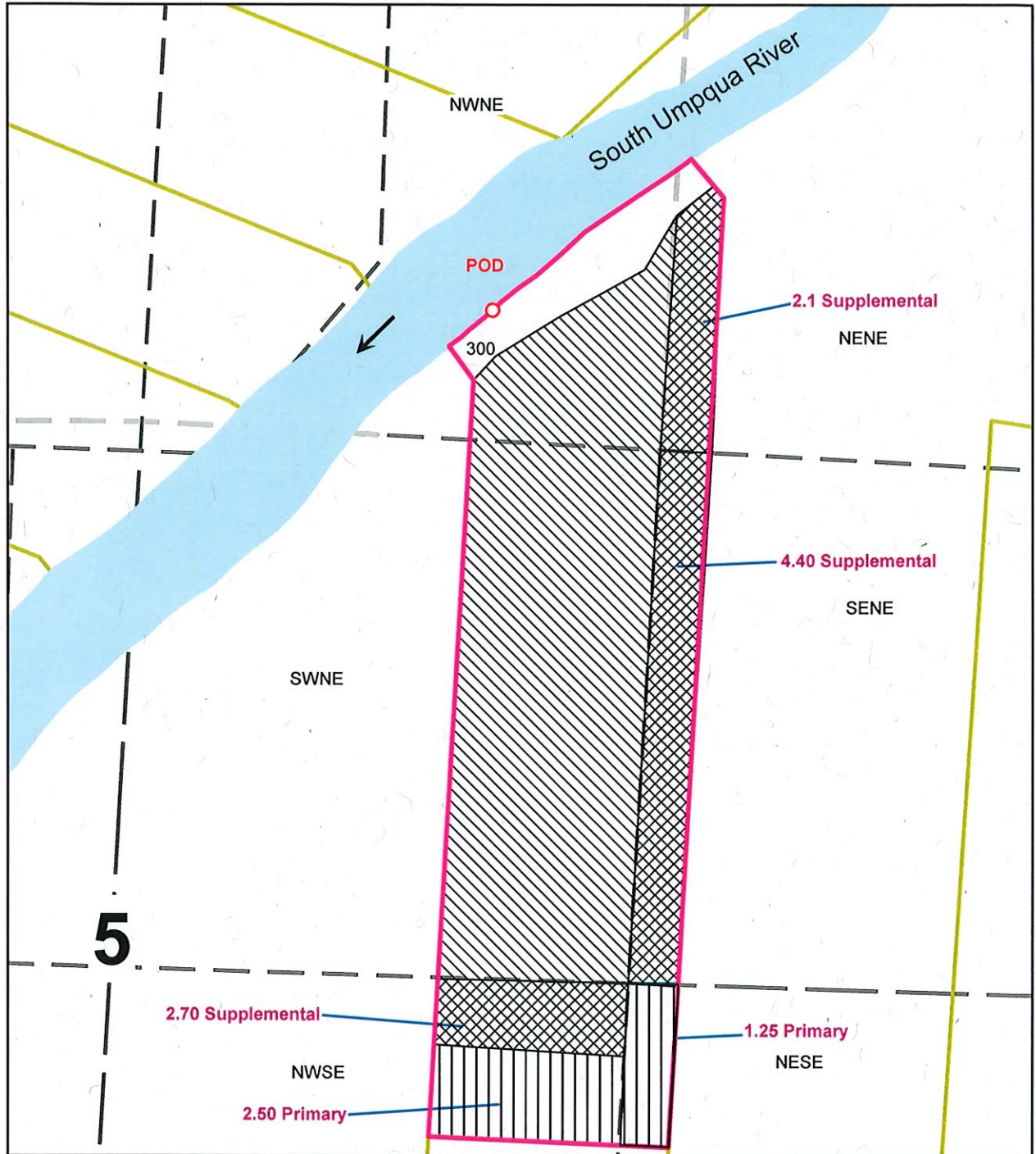
Proposed

3.75 acres

Primary

9.20 acres

Supplemental



Point of Diversion is 1050 ft South and 1800 ft West
from the NE Corner of Section 5

The purpose of this map is to identify
the location of a water right.
Not intended to show property ownership.

THIS MAP WAS PREPARED FOR ASSESSMENT PURPOSE ONLY.

SEC.5 T.27S. R.6W. W.M. DOUGLAS COUNTY

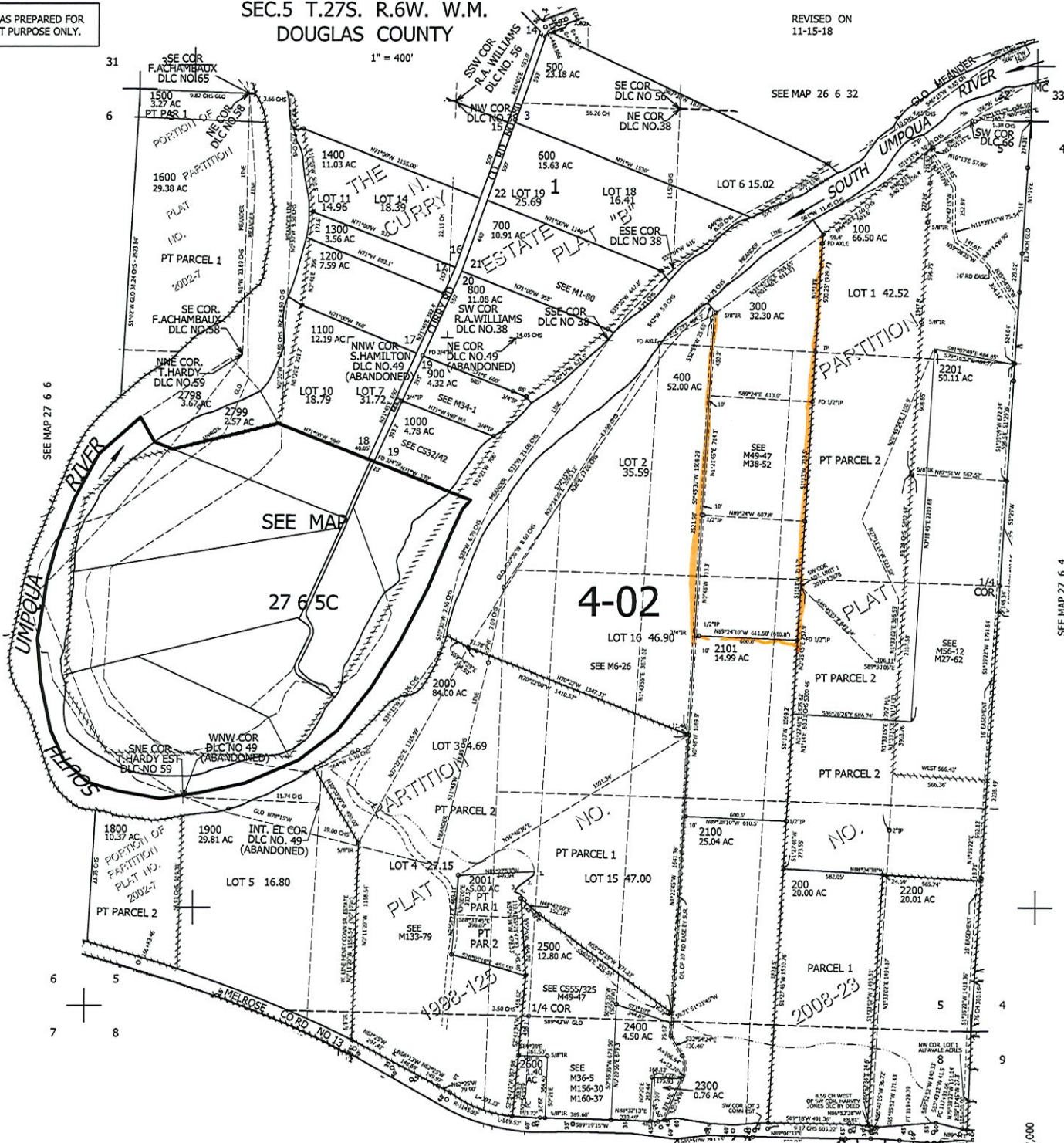
1" = 400'

REVISED ON 11-15-18

27 6 5 & INDEX

RECEIVED JUN 21 2021 OWRD

CANCELLED NO'S 1700 2501 2002 2003 201 2202 2301 2401 101 202 203 2203



SEE MAP 27 6 6

SEE MAP 27 6 4

PARCEL 2001
 CL. CREEK
 1. S13°19'50"E 19.75'
 2. S51°23'31"E 115.74'
 3. S29°49'47"E 35.78'
 4. S68°06'32"E 39.58'

589,000

SEE MAP 27 6 8

4,137,000

27 6 5 & INDEX