

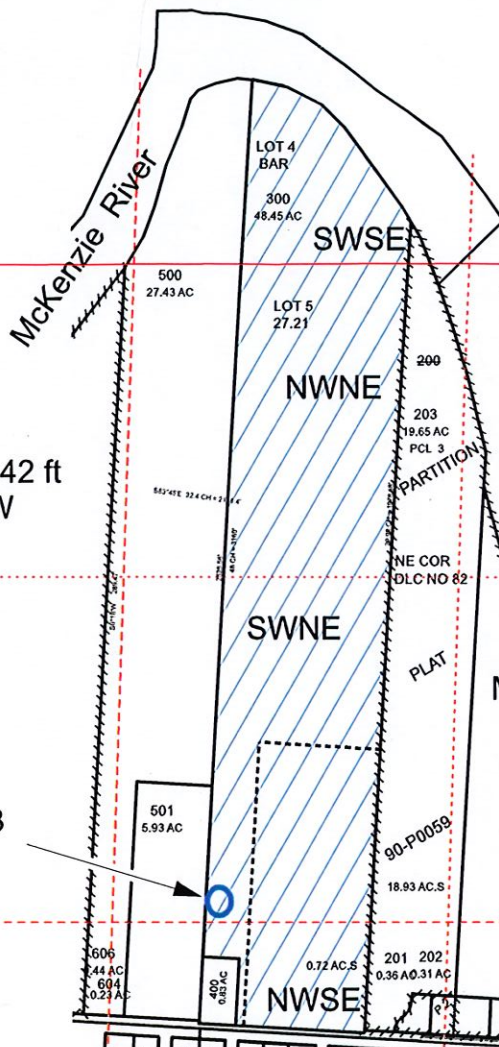
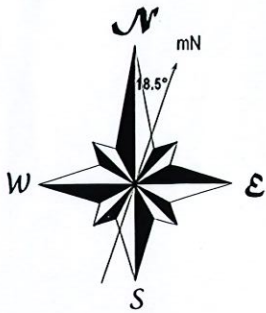
RECEIVED

DEC 17 2021

OWRD

SECTION 18

SECTION 19



Lane 77893 point of diversion 42 ft north and 225 ft east of the SW corner, SWNE, section 19.

Lane 77893

MAP 17-02-19-00

MAP 17-02-19-42

MAP 17-02-19-41



EXPIRATION DATE: 12/31/22

1" = 400'



Area of water right application



Well Location

- Section Line
- 1/4 Section Line
- 1/4 1/4 Section Line

Area by Quarter Quarter Section 18		
40	160	Acres
SW	SE	7.43
Area by Quarter Quarter Section 19		
NW	NE	18.12
SW	NE	19.4
NW	SE	5.37



EGR & Associates, Inc.
Engineers, Geologists and Surveyors

SECTION 18 & 19 T.17S.
R2W W.M.