

SE1/4 SEC. 25 T.27S. R.7W. W.M.
DOUGLAS COUNTY

REVISED ON
6-16-94

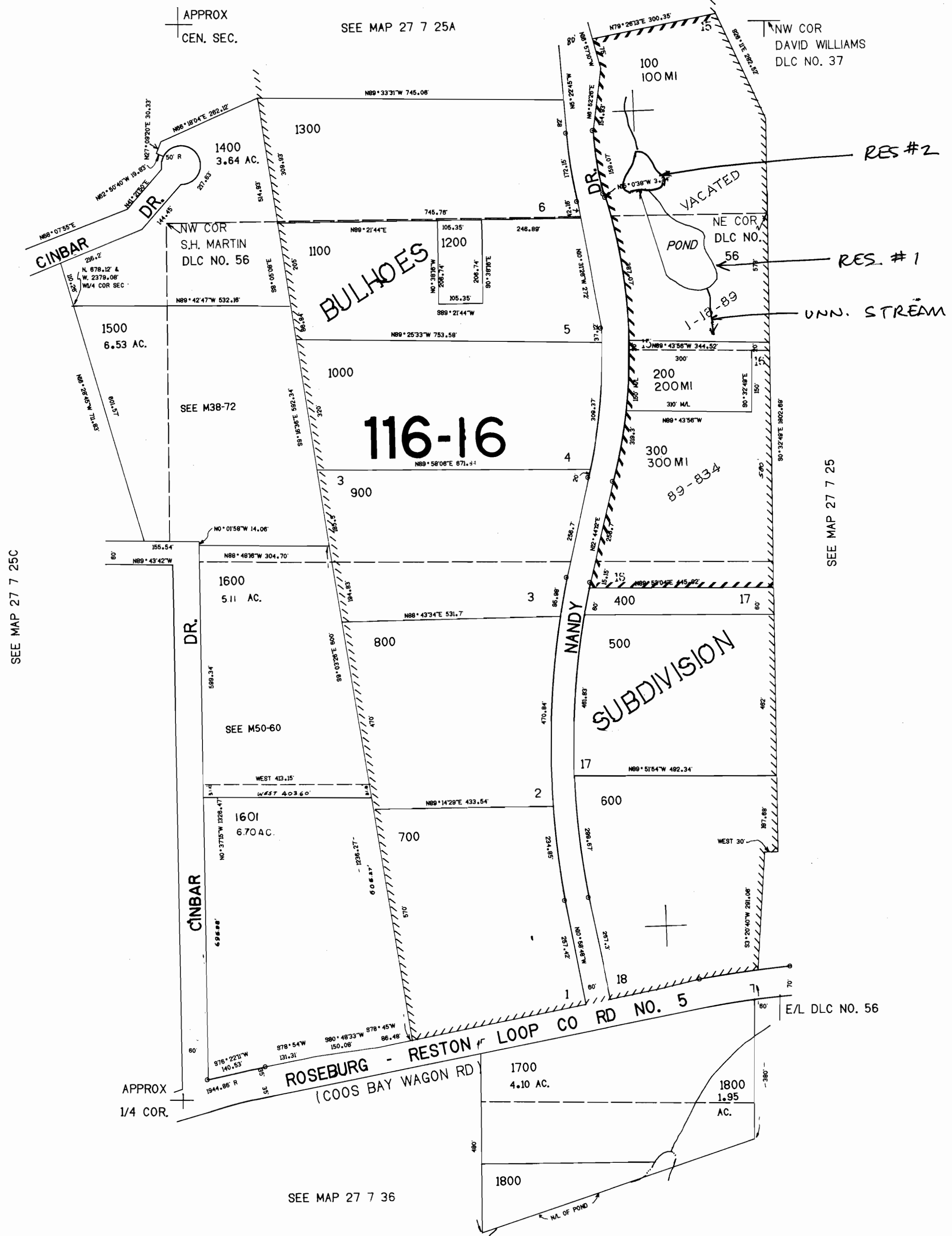
27 7 25D

THIS MAP WAS PREPARED FOR
ASSESSMENT PURPOSE ONLY.

1"=200'

69437

CERTIFICATE NO.



APPROX
NE COR 1/4 COR.
DLC NO. 37

SEE MAP 27 7 25C

SEE MAP 27 7 25

RECEIVED

DEC - 5 1994

WATER RESOURCES DEPT.
SALEM, OREGON

1.206.000

568,000

25	30
36	31

SEE MAP 27 7 36

27 7 25D

R75241