

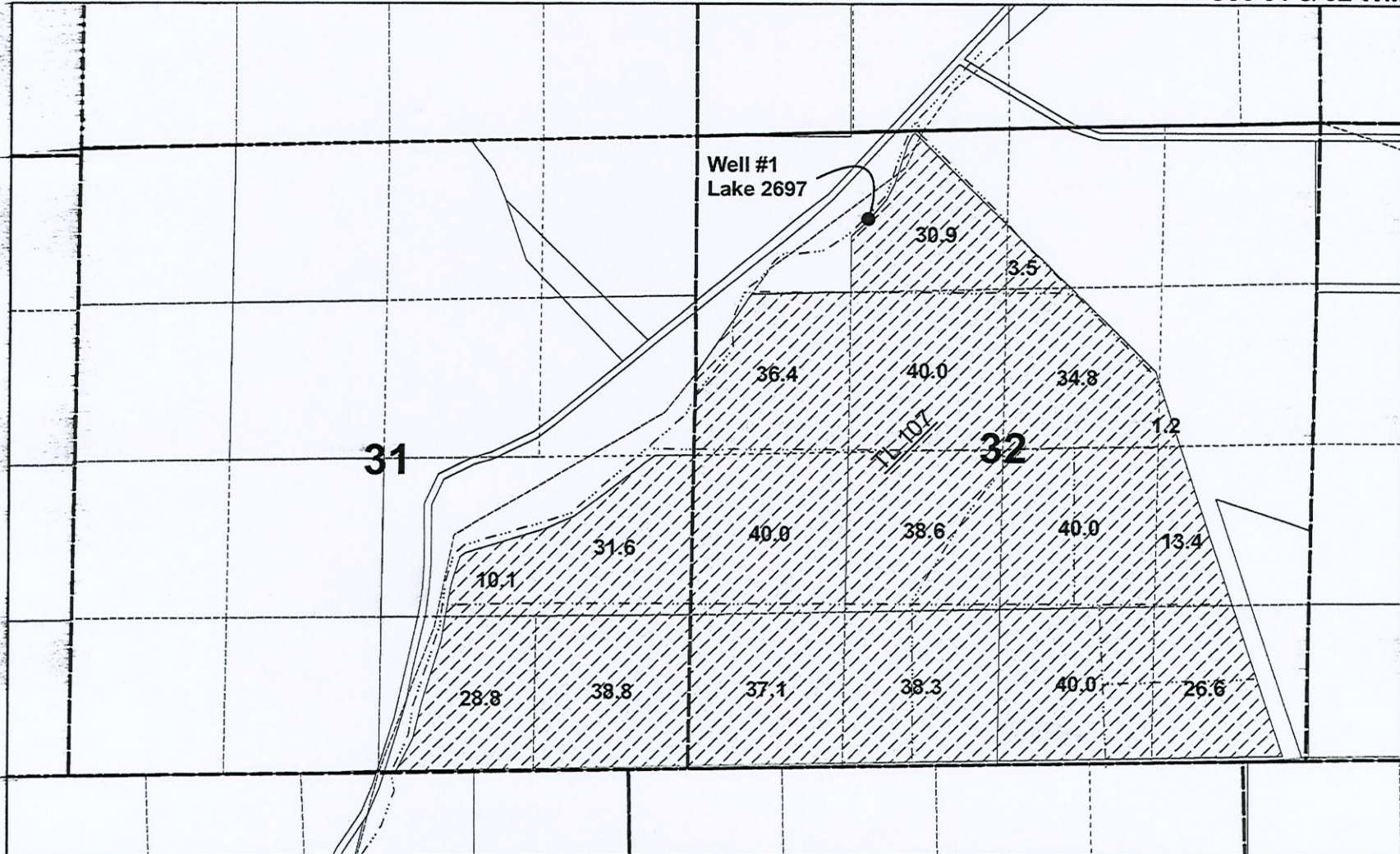
RECEIVED

JUL 28 2021

OWRD

# LX Ranch Application Map Drought Supplemental Permit

T 39 S, R 24 E  
Sec 31 & 32 WM






N



1 inch = 1,320 feet

Well LAKE 2697 is located in the  
NE1/4 NW1/4 of Section 32,  
T 39 S, R 24 E, WM  
South 695 feet and East 1463  
from the NW Corner of Section 32  
T 36 S, R 24 E, WM

## Legend

-  Drought permit application area 530.1 ac
-  Well
-  Ditches