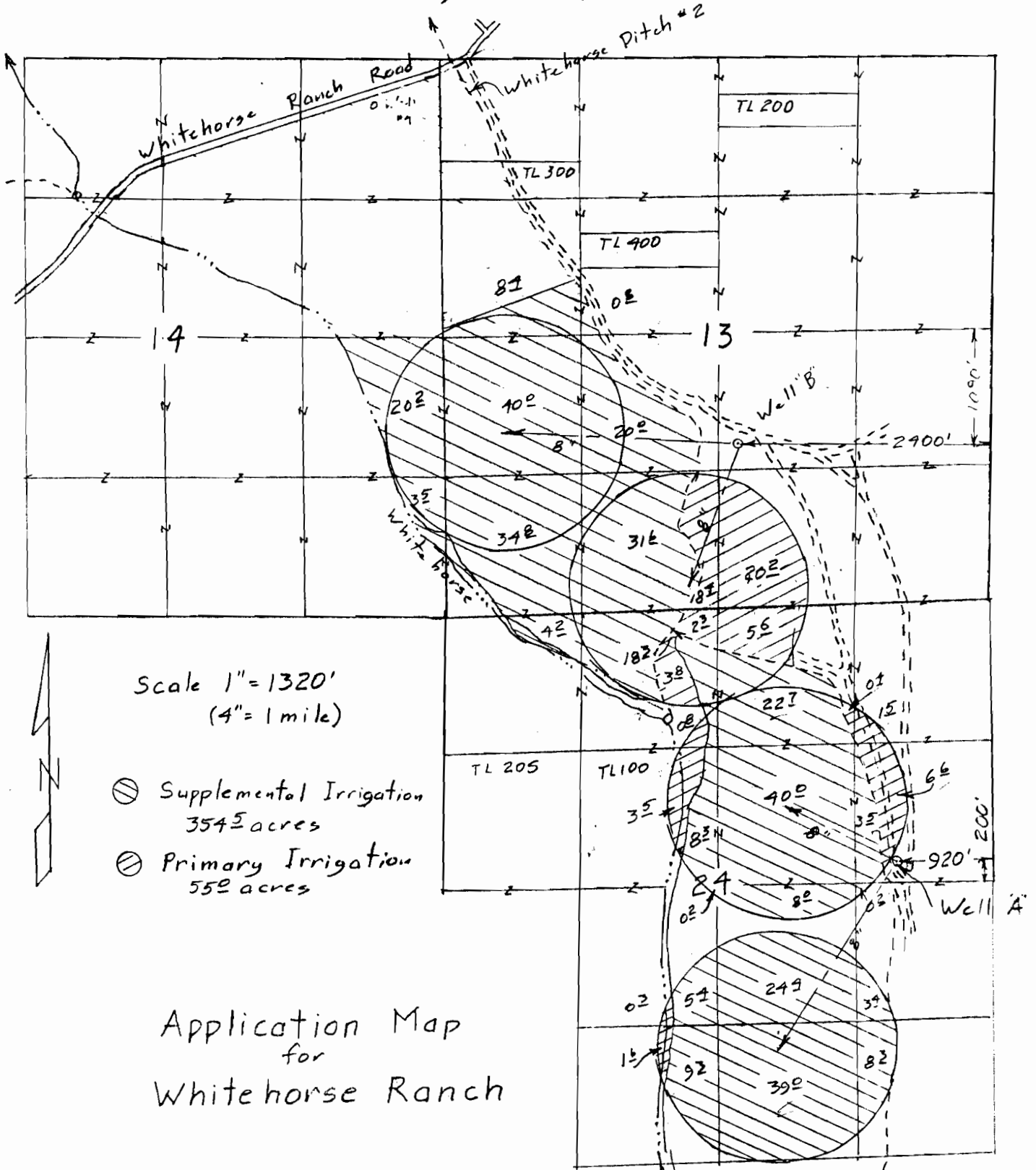


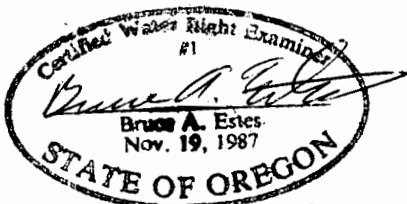
T. 37S, R. 36E, W.M.



Scale 1" = 1320'
(4" = 1 mile)

- ⊗ Supplemental Irrigation
354.5 acres
- ⊗ Primary Irrigation
55.0 acres

Application Map
for
Whitehorse Ranch



Renewal Dec 31, 2007

This map is for the purpose of locating a water right only and has no intent to provide legal dimensions or the location of property lines.

ESTES SURVEYS, LLC

PO Box 17519 60382 Amick St
Salem, OR 97305-7519 Bend, OR 97701
(503) 585-7593 (541) 382-7322