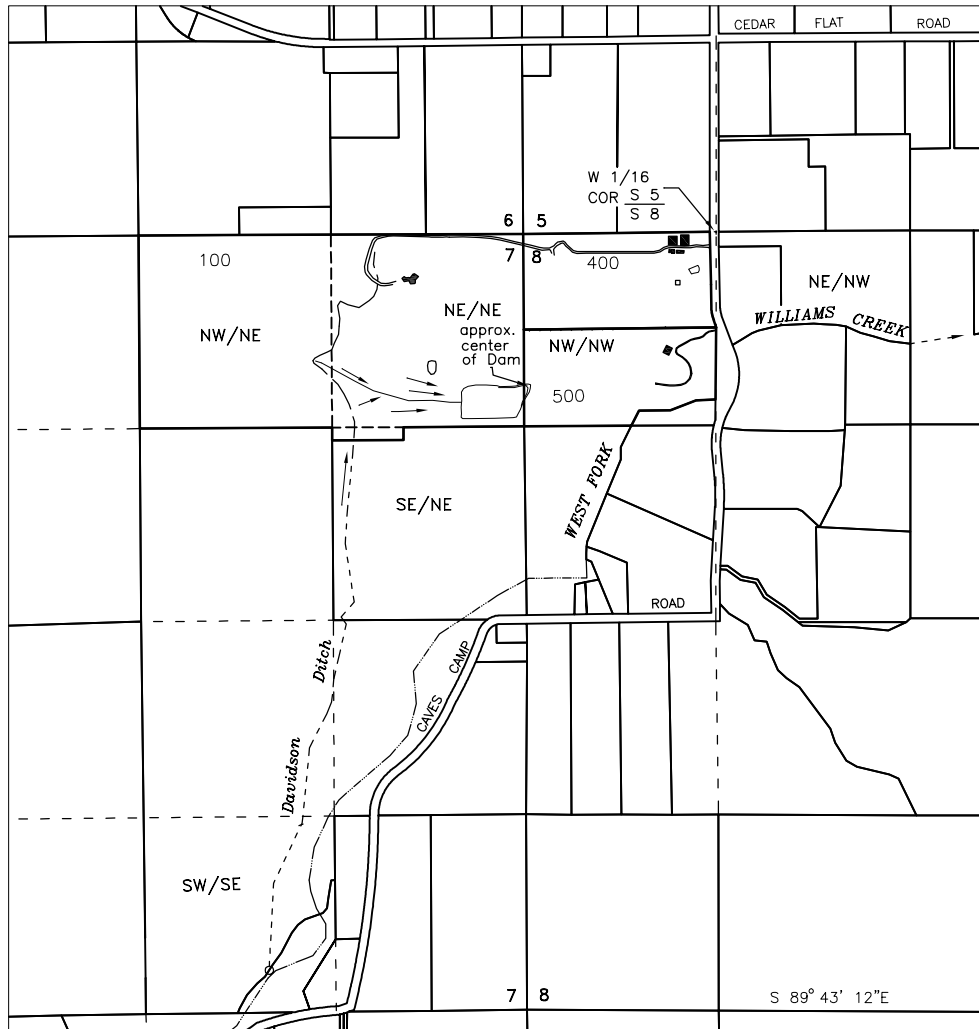


# APPLICATION TO STORE WATER (REVISED)

## ALTERNATE REVIEW PROCESS TOWNSHIP 39S, RANGE 5W, W.M. JOSEPHINE COUNTY OREGON






Legend

PREPARED FOR: FULL CIRCLE PROPERTIES, LLC  
P.O. Box 471  
Williams, OR 97544

Scale  
1" = 1320'

Center of Dam – 1055 feet South & 1290 feet west from the W 1/6 corner of Section 5 & 8 (proposed)

 Reservoir – 9 Acre–Feet  
Source – Runoff including in ditch  & Surface seepage 

Base map Josephine County GIS Tax Lots over 6/29/2018 Google aerial photo & Oregon Map aerial downloaded 1/13/2015 for assumed best fit

This map is not intended to provide legal dimensions or locations of property ownership lines

map oriented to south line of section 8, S89° 43'12"E

drawn 11/20/2019 n.e.d.  
revised 10/18/2021 n.e.d.

