

N. R. 30E. W. M ⊕ WELL LOCATION: 3200' north and 2440' east of the SW corner of section 3

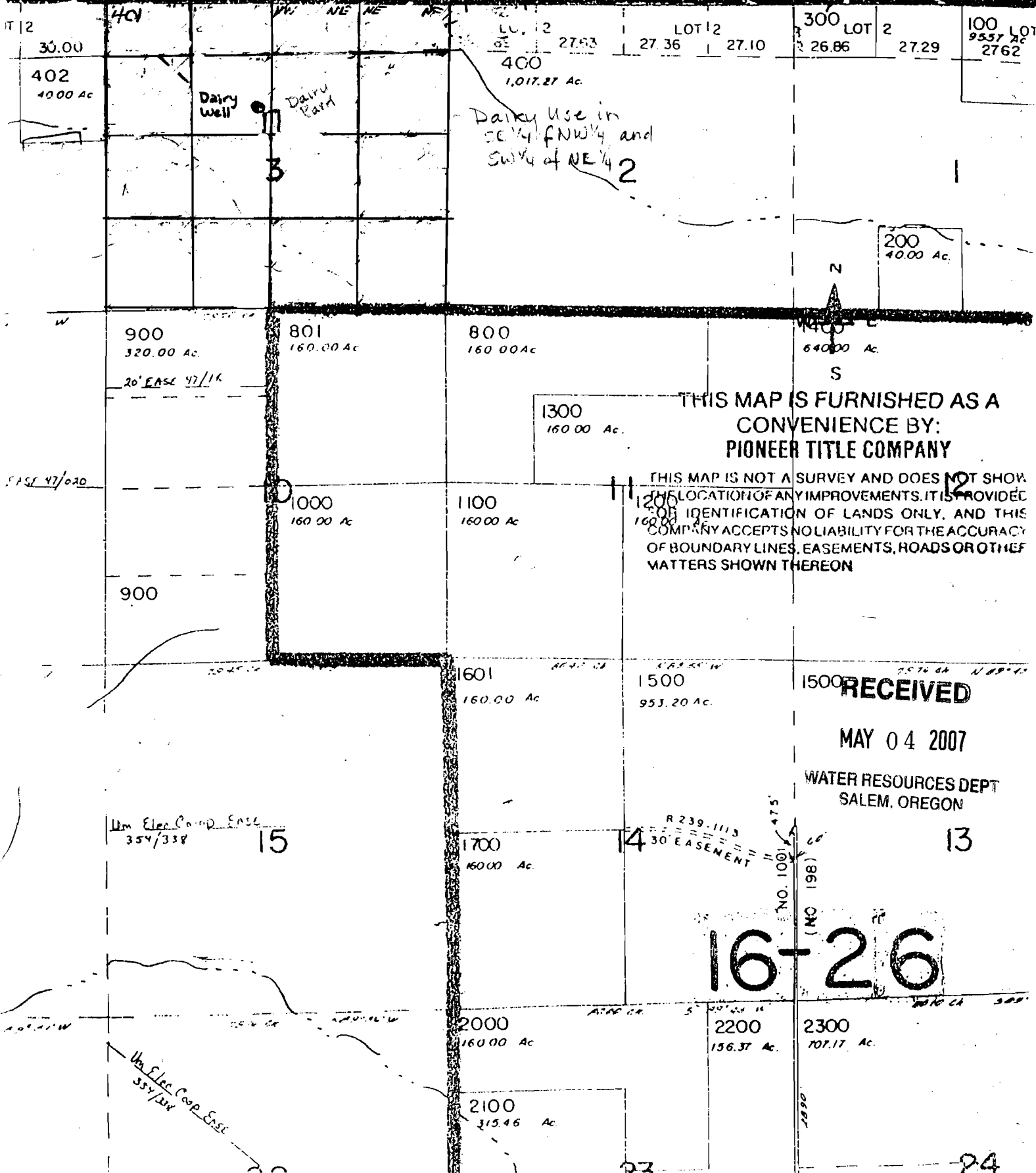
MATILLA COUNTY

Aerial Photo
WATER RESOURCES DEPT.
SALEM, OREGON
26.86 Ac.

1" = 2000'

PARALLEL

NORTH



THIS MAP IS FURNISHED AS A
CONVENIENCE BY:
PIONEER TITLE COMPANY

THIS MAP IS NOT A SURVEY AND DOES NOT SHOW THE LOCATION OF ANY IMPROVEMENTS. IT IS PROVIDED FOR IDENTIFICATION OF LANDS ONLY, AND THIS COMPANY ACCEPTS NO LIABILITY FOR THE ACCURACY OF BOUNDARY LINES, EASEMENTS, ROADS OR OTHER MATTERS SHOWN THEREON

RECEIVED

MAY 04 2007

WATER RESOURCES DEPT
SALEM, OREGON

16-26