



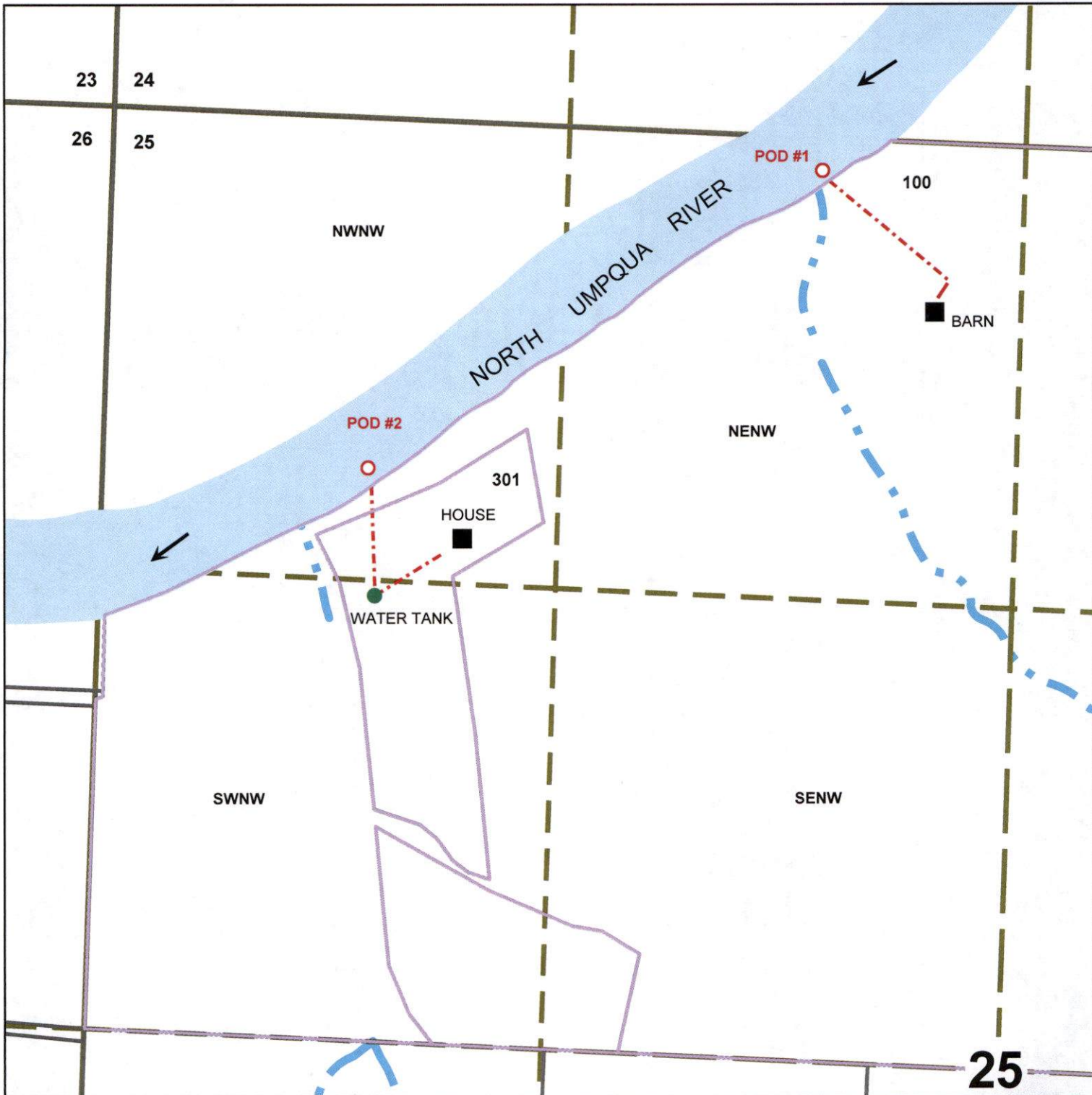
Surface Water Application Map
Ratzlaff
T.26s R5w Section 25
Douglas County

RECEIVED

NOV 03 2021

OWRD

Scale: 1" = 400



Point of Diversion #1 is 97 ft South and 2,038 ft East from the
NW 1/4 Corner of Section 25

Point of Diversion #2 is 1,005 ft South and 800 ft East from the
NW 1/4 Corner of Section 25