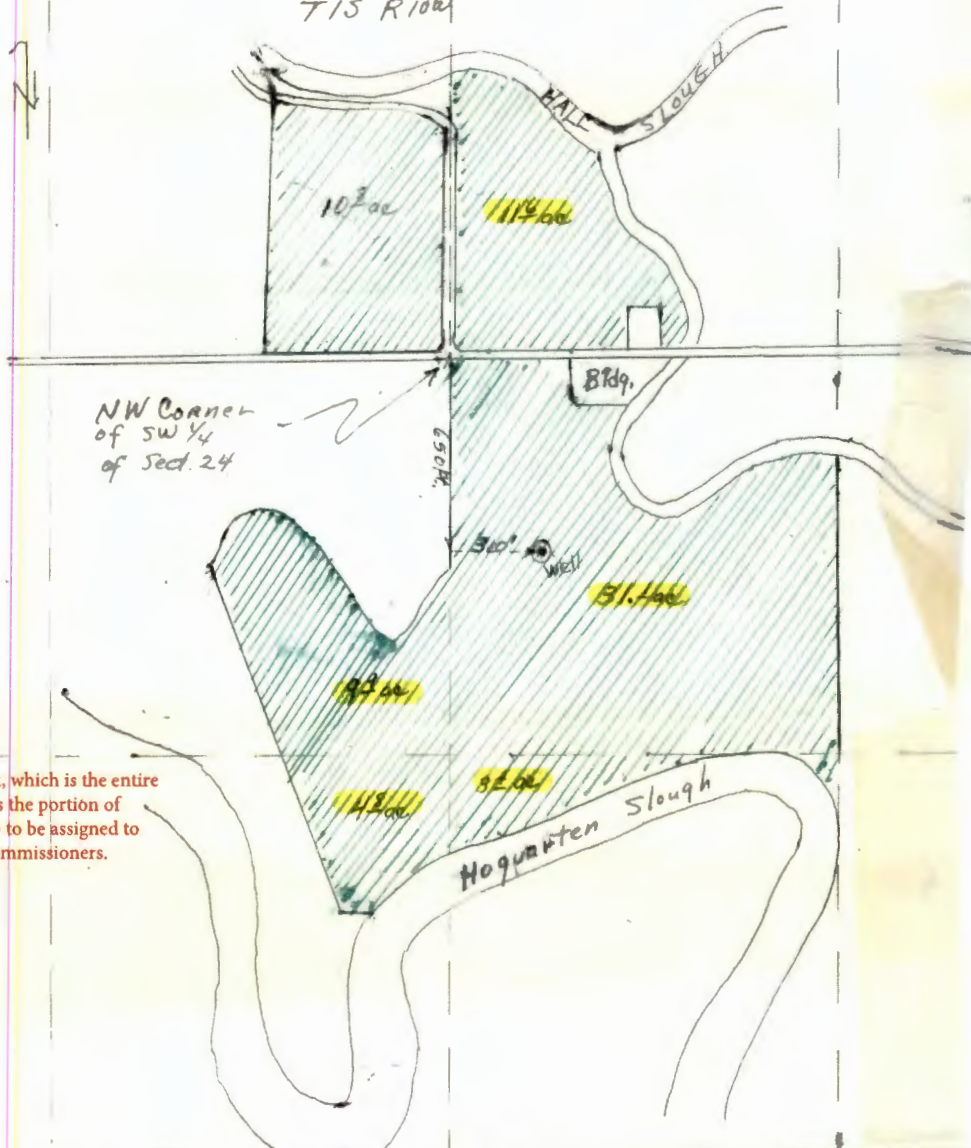


RECEIVED


OCT 12 2021

OWRD

Well Registration Map
Sect 23 | Sect 24.
T15 R100W

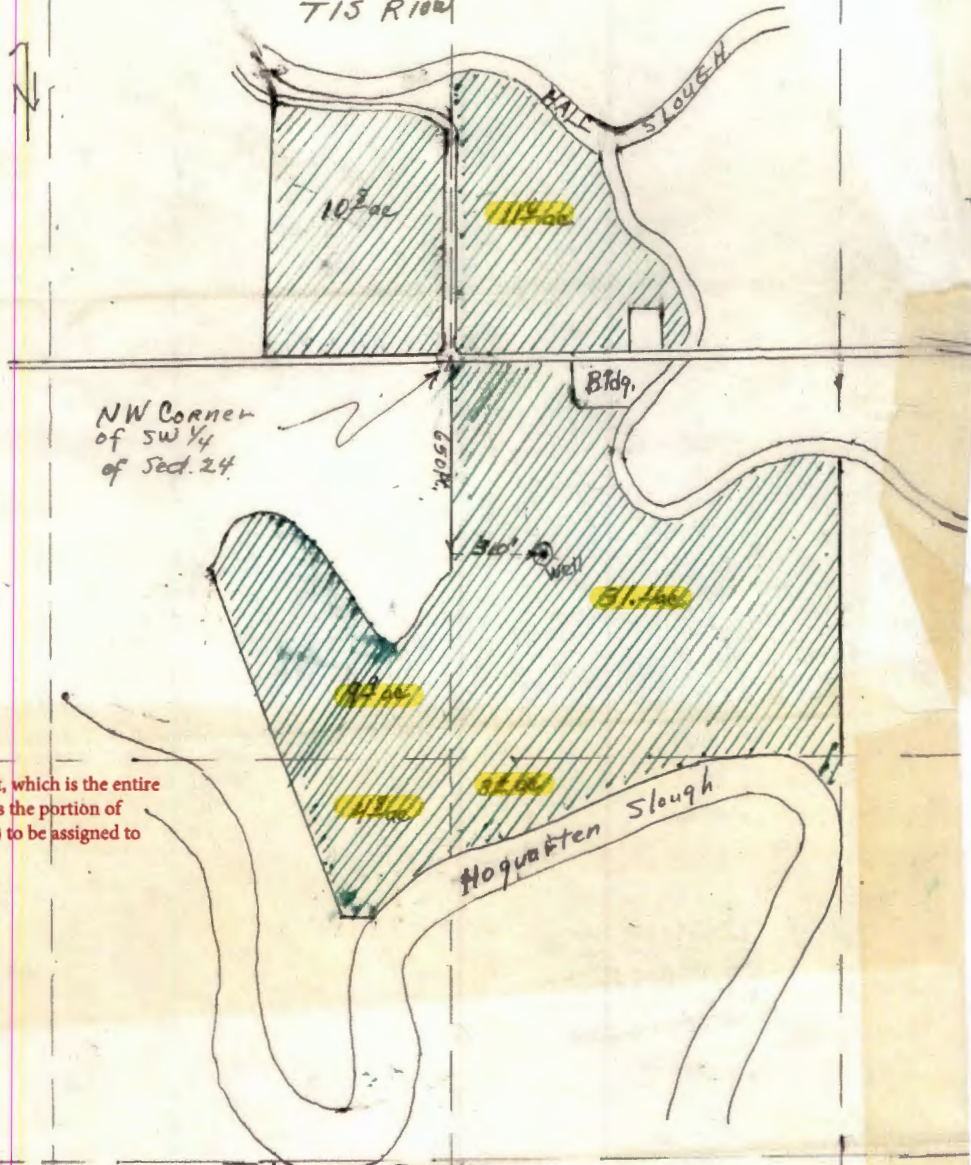


The acres shown with highlight, which is the entire place of use except 10.8 acres, is the portion of GR-2952 (Certificate GR-2771) to be assigned to Tillamook County Board of Commissioners.

Antone + Johanna Beelen
Rt. 1 Bay City, ORE
Scale 1" = 400'
Land Irrigated - 

RECEIVED
OCT 22 2021
OWRD

Well Registration Map
Sect 23 | Sect 24.
T15 R10W



The acres shown with highlight, which is the entire place of use except 10.8 acres, is the portion of GR-2952 (Certificate GR-2771) to be assigned to Jenck Farms LLC.

Antone + Johanna Beeler
Rt. 1 Bay City, ORE
Scale 1" = 400'
Land Irrigated - 