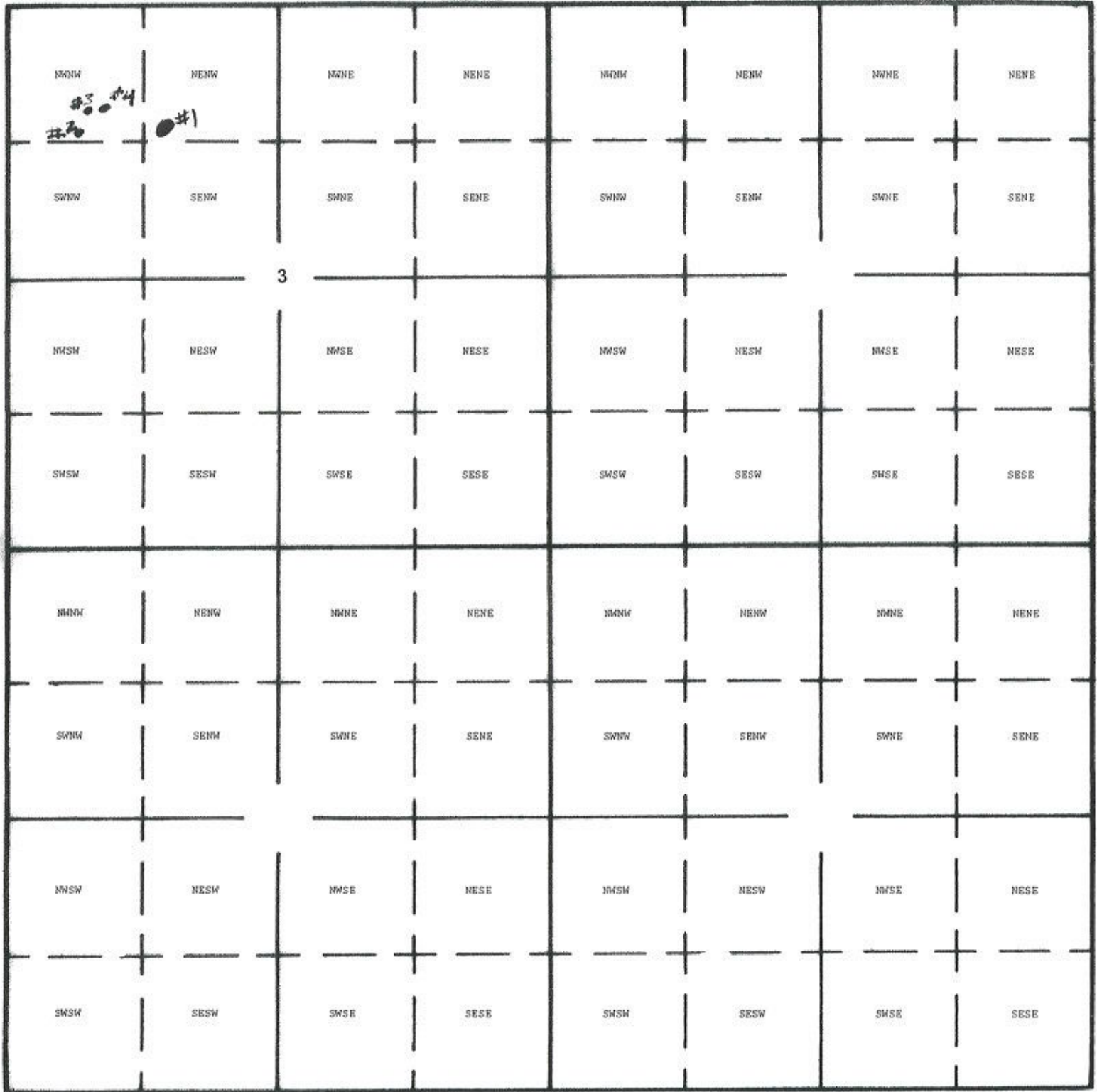


Kirsten Freed  
1" = 1320'  
Tax Lot:

E-RECEIVED  
March 7, 2022  
OWRD



Township 10 South, Range 6 West, Section 3, Tax Lot 402



South

- Reservoir 1: <sup>1307</sup>~~1435~~ feet south and 1520 feet east from NW Corner Section 3
- Reservoir 2: 1310 feet south and 640 feet east from NW Corner Section 3
- Reservoir 3: 1040 feet south and 760 feet east from NW Corner Section 3
- Reservoir 4: 1000 feet south and 815 feet east from NW Corner Section 3

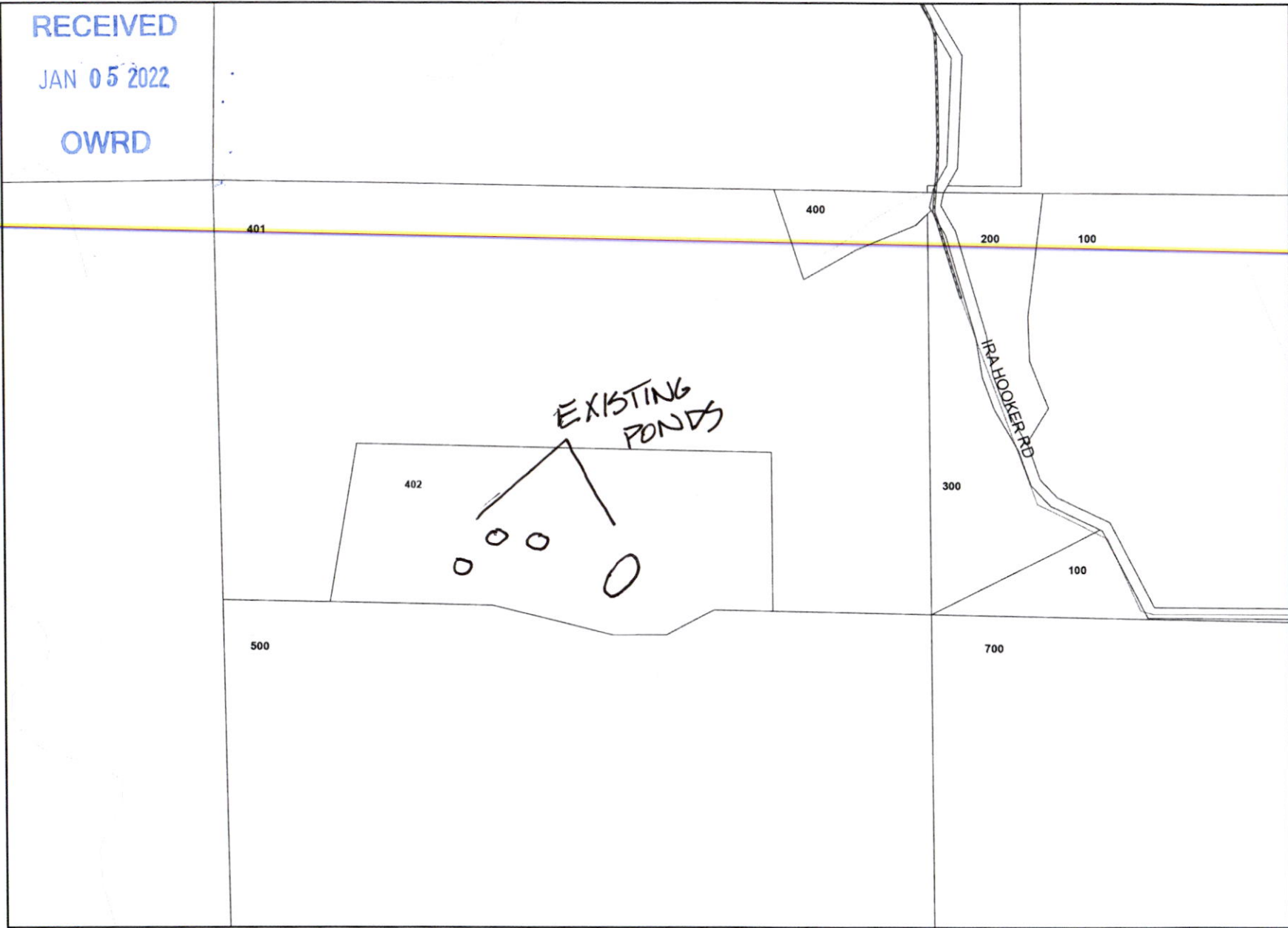
*K. Freed 3/7/22*

# Polk County Map

RECEIVED

JAN 05 2022

OWRD



Date: 12/23/2021

This map was produced from the Polk County geographic databases to support its governmental activities. This product is for informational purposes and may not have been prepared for, or be suitable for legal, engineering, or surveying purposes. The county is not responsible for any map errors, possible misuse, or misinterpretation. To report a map error, please call (503)623-0713.

RECEIVED

JAN 05 2022

OWRD

FREED VESTING DEED PL. 3

POLK COUNTY

SCALE 1" = 400'

SEE MAP NO. 9 6 34 571.57

1/4 Cor

34

3

401

400 (3)

(2)

LOT

47.87

2-16

LOT

48.24

LO

402

(4)

4-1

4 partial to 4-1

(6)

500

501

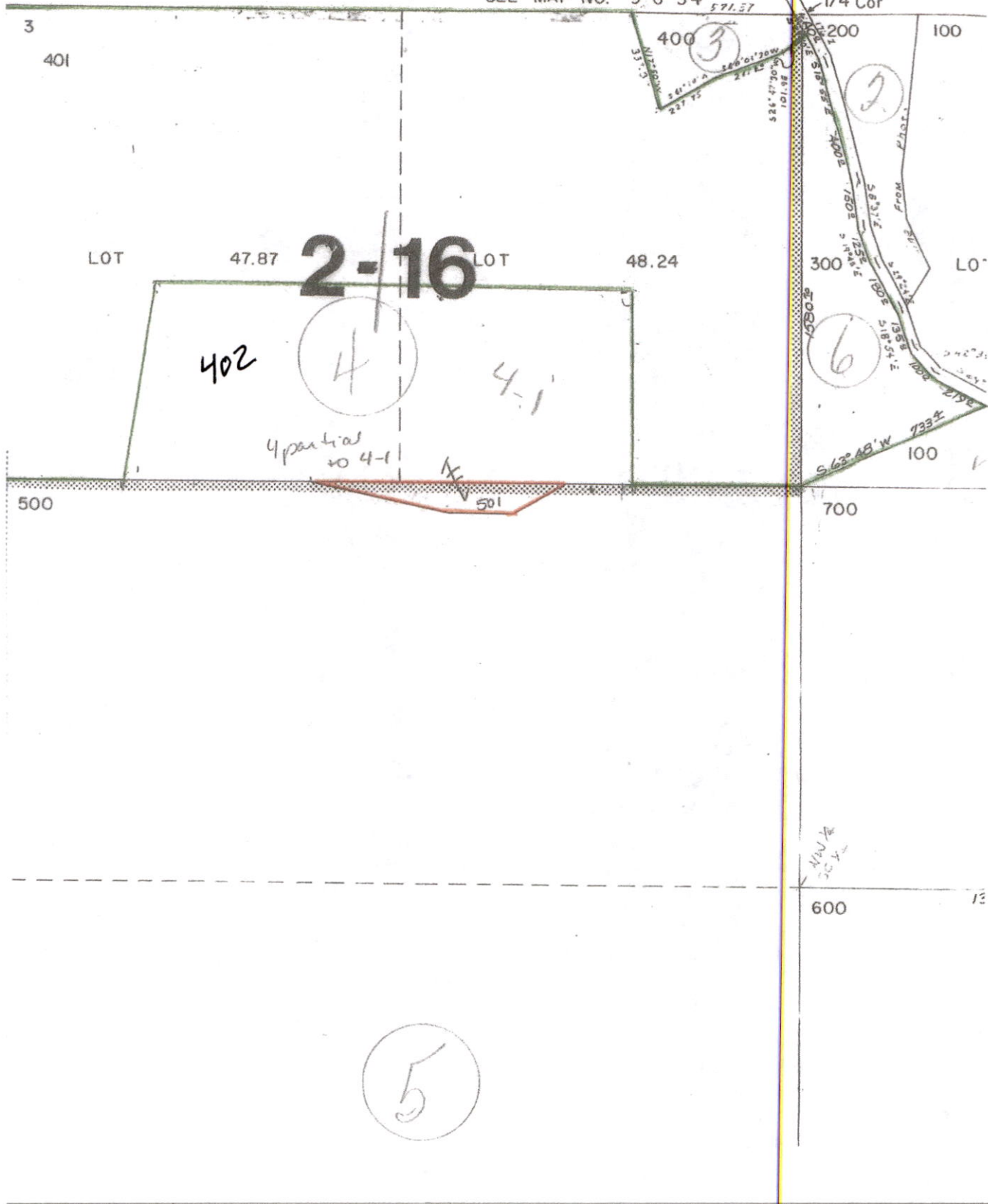
700

MAN 1/2

600

13

(5)





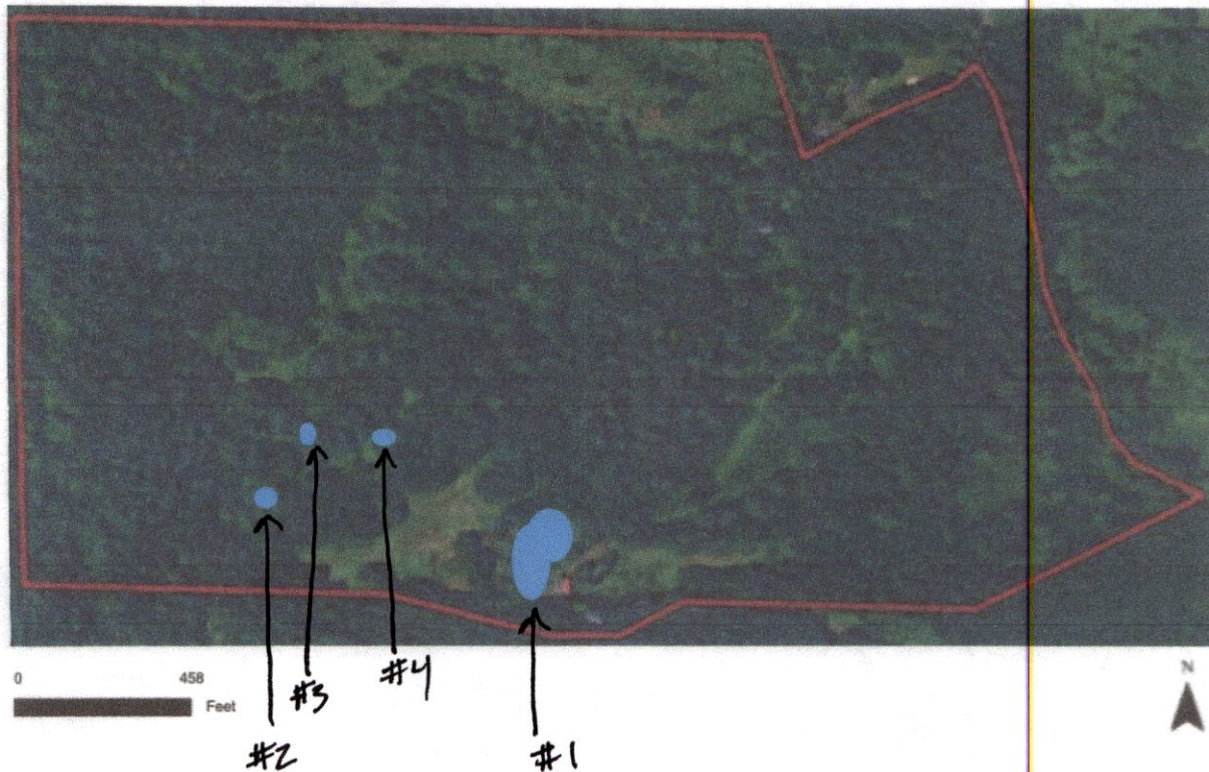
FREED WATER MAP

RECEIVED

JAN 05 2022

OWRD

Client: KIRSTEN S. FREED  
Location: T10S R6W Sec 3, Tract 4786  
Kings Valley Oregon Quad, Polk County, Oregon  
Assisted By: Susan Reams, USDA NRCS Dallas Service Center Polk County Soil & Water Conservation District (Photo 2017)



**Key**

Property Boundary



Historic Reservoir / Pond



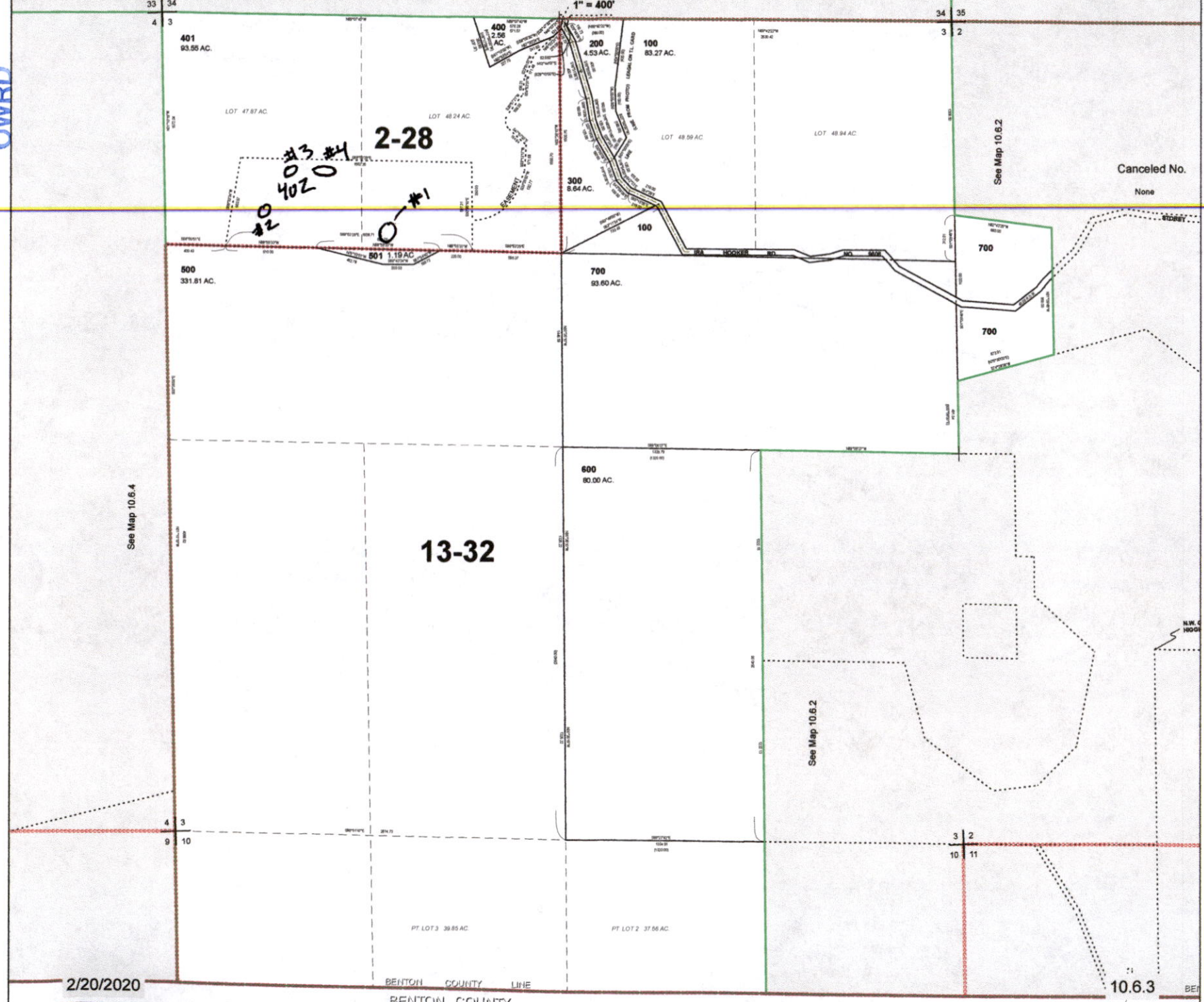
RECEIVED  
JAN 05 2022

OWRD

THIS MAP IS FOR ASSESSMENT AND TAXATION PURPOSES ONLY

SEC. 3 T.10S. R.6W. W.M.  
Polk County See Map 9.6.34  
1" = 400'

10.6.3



See Map 10.6.2

Canceled No.  
None

See Map 10.6.4

2-28

0 #1  
0 #2  
0 #3  
0 #4

13-32

See Map 10.6.2

2/20/2020

BENTON COUNTY LINE  
BENTON COUNTY

10.6.3



