

Stiling Vineyards Phase II Irrigation Water – Limited License

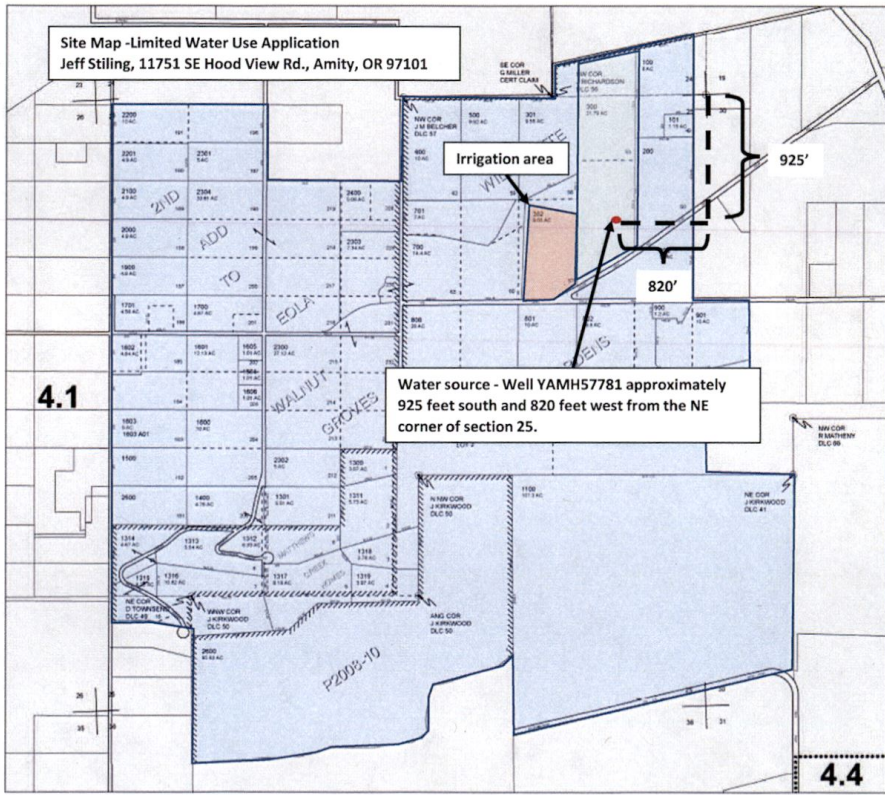


RECEIVED
JAN 18 2022
OWRD

LL-1915

RECEIVED
JAN 24 2022
OWRD

5 4 25



ASSESSMENT & TAX
CARTOGRAPHY
SECTION 25 T.6S. R.4W. W.M.
YAMHILL COUNTY OREGON
1" = 400'

- CANCELLED TABLETS
- 1800
- 1810
- 1820
- 1830
- 1840
- 1850
- 1860
- 1870
- 1880
- 1890
- 1900
- 1910
- 1920
- 1930
- 1940
- 1950
- 1960
- 1970
- 1980
- 1990
- 2000

DATE PRINTED 7/28/2020

This product is for Assessment and Taxation (AST) purposes only and has not been prepared or is suitable for legal, engineering, surveying or any purposes other than assessment and taxation.

5 4 25

LL-1915