

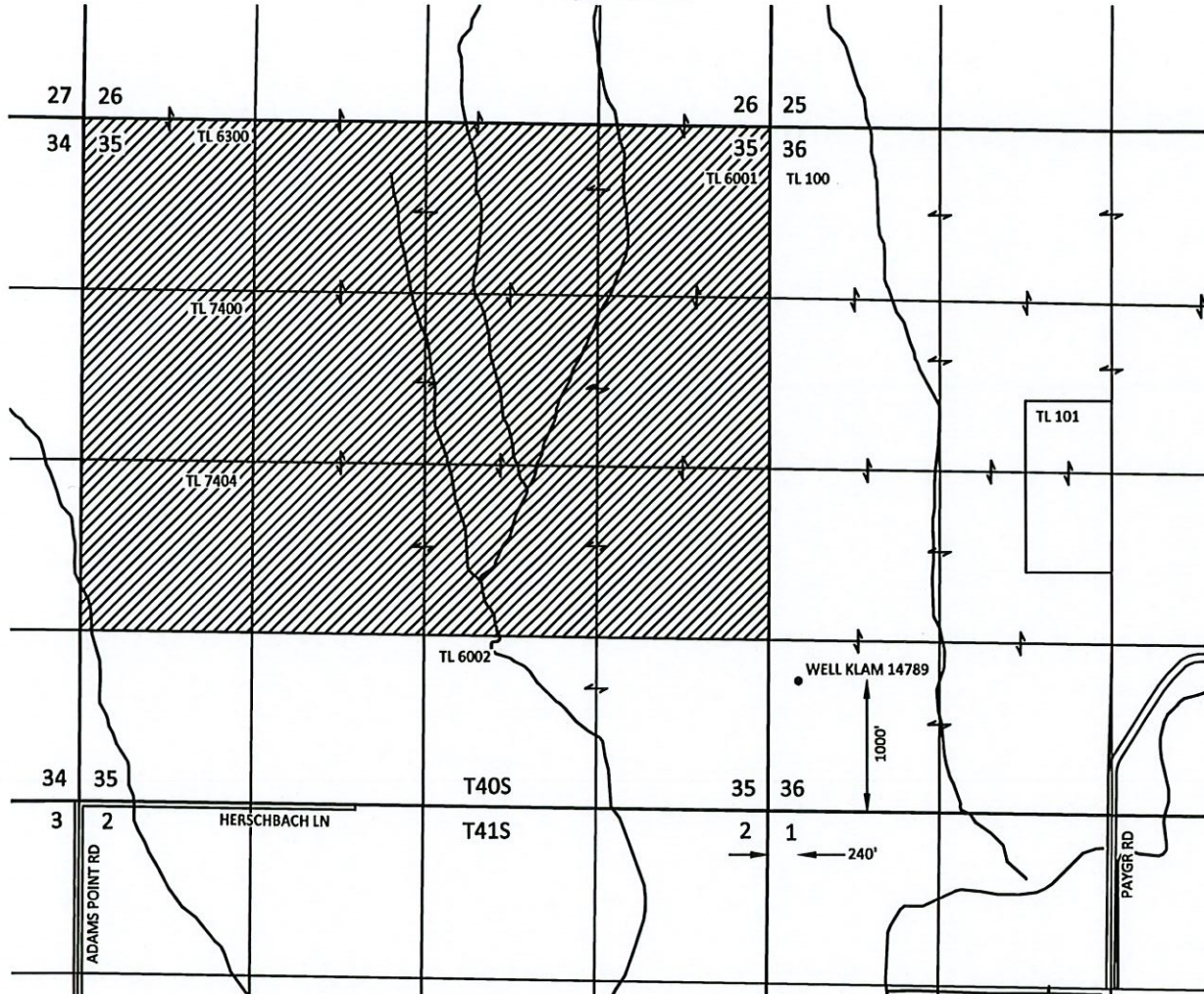
Sections 35 & 36, T40S, R11E, W.M.,
Klamath County, Oregon

RECEIVED

JAN 24 2022

LIMITED LICENSE APPLICATION MAP
Skysol, LLC

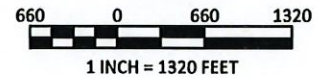
OWRD



EXPLANATION

-  PROPOSED PLACE OF USE
-  WELL

SCALE



KPFF 1700014.95

SKOOKUM
WATER ASSOCIATES INC

1626 VICTORIAN WAY
EUGENE, OR 97401
(503) 319-8926

December 22, 2021

This map is not intended to provide legal
dimensions or locations of property
ownership lines

Figure 1

LL-1916