

POD: 1125 FEET SOUTH AND 1475 FEET WEST FROM NE CORNER, SECTION 5

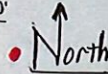
SECTION 5 T25S R11W W.M. COOS COUNTY

25S 11W 05 & INDEX

CANCELLED NO.

- 1600
- 400
- 501
- 399
- 505
- 506
- 507

1" = 400'

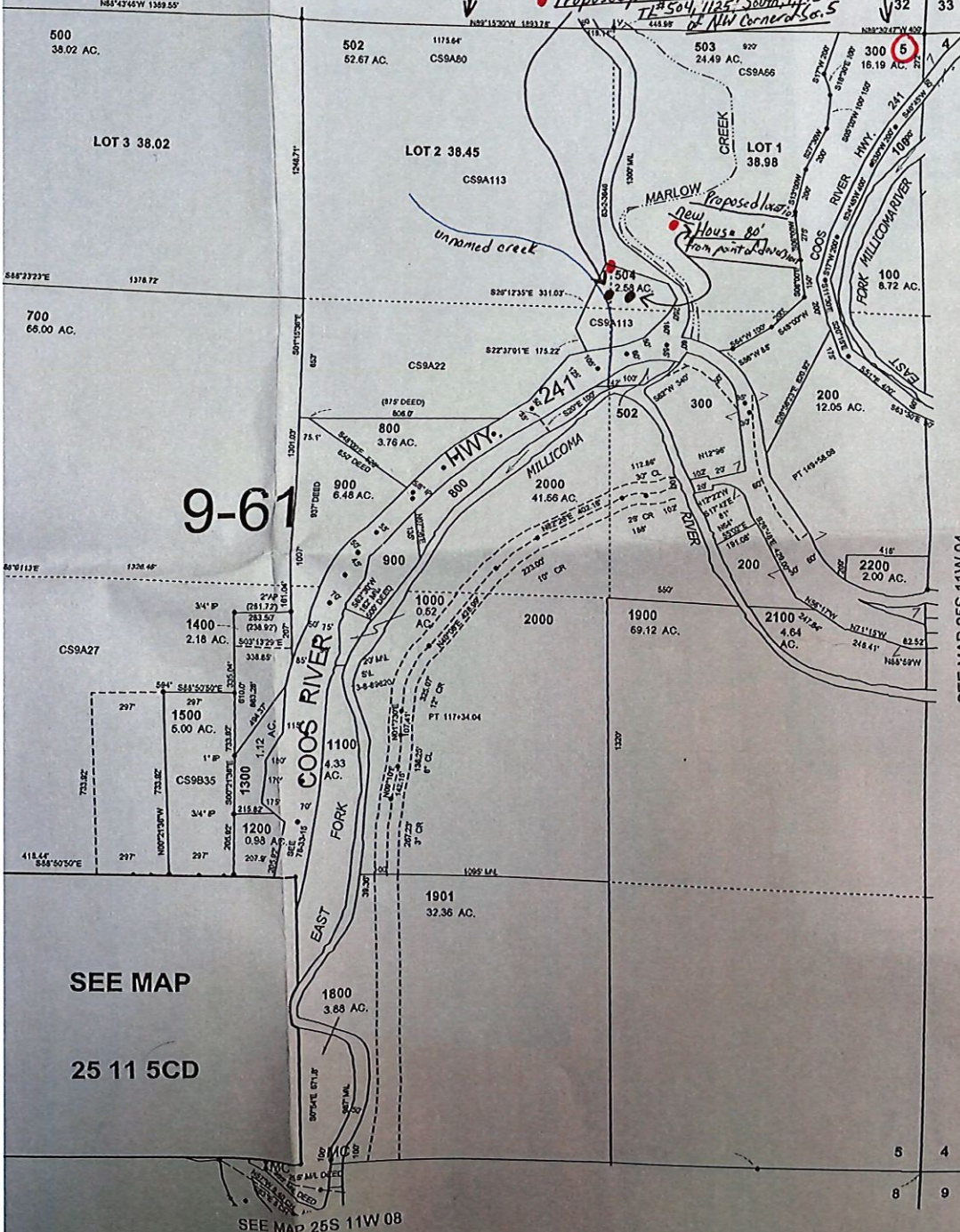


SEE MAP 24S 11W 32

N.W. 1/4, 1/4

NE corner of Sec. 5

Proposed point of diversion
T# 504, 1125' South, 1475' West
of NE corner of Sec. 5



RECEIVED

APR 26 2021

OWRD

9-61

SEE MAP

25 11 5CD

SEE MAP 25S 11W 08

SEE MAP 25S 11W 04

11-9-2009
25S 11W 05 & INDEX

(not to scale)

S-88928