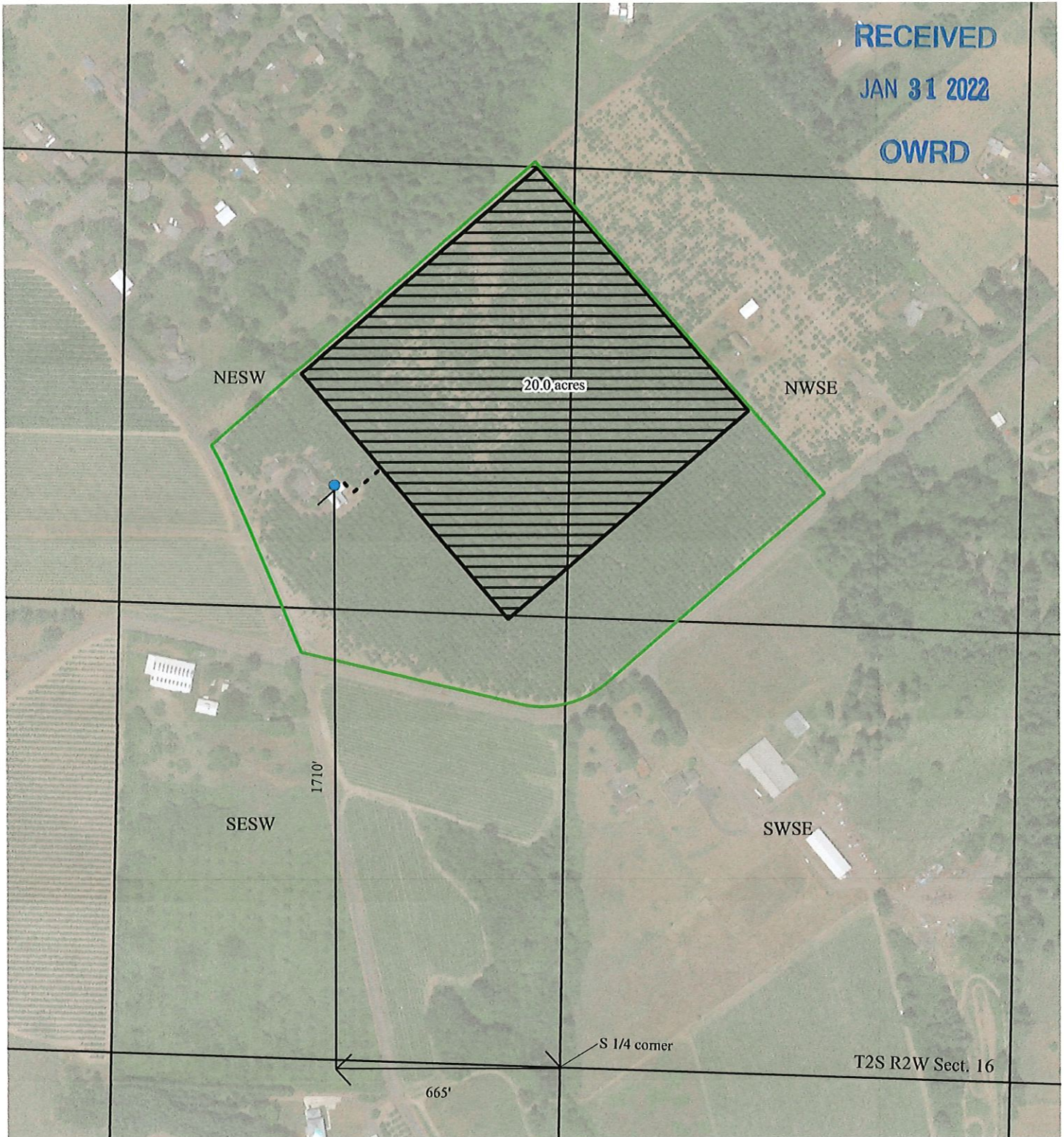


RECEIVED

JAN 31 2022

OWRD



Explanation

WASH 12670 is located 1,710'N and 665'W from SE 1/4 corner of T2S RSW Sect. 16

0 200 400 ft



- Property (Tax Lot 900)
- Place of Use (20.0 acres)
- Mainline (2-inch diameter to place of use)
- PLSS Qtr Qtr
- Supply Well (WASH 12670)

LIMITED WATER USE LICENSE

PLACE OF USE

**25859 SW Vanderschuere Rd.
Hillsboro, Oregon**

EnviroLogic Resources, Inc.
ENVIRONMENTAL · WATER RESOURCES SCIENTISTS

Sources: Washington County Parcels, OR
PLSS (BLM, 2022), Google Earth/Roads.



LL-1919