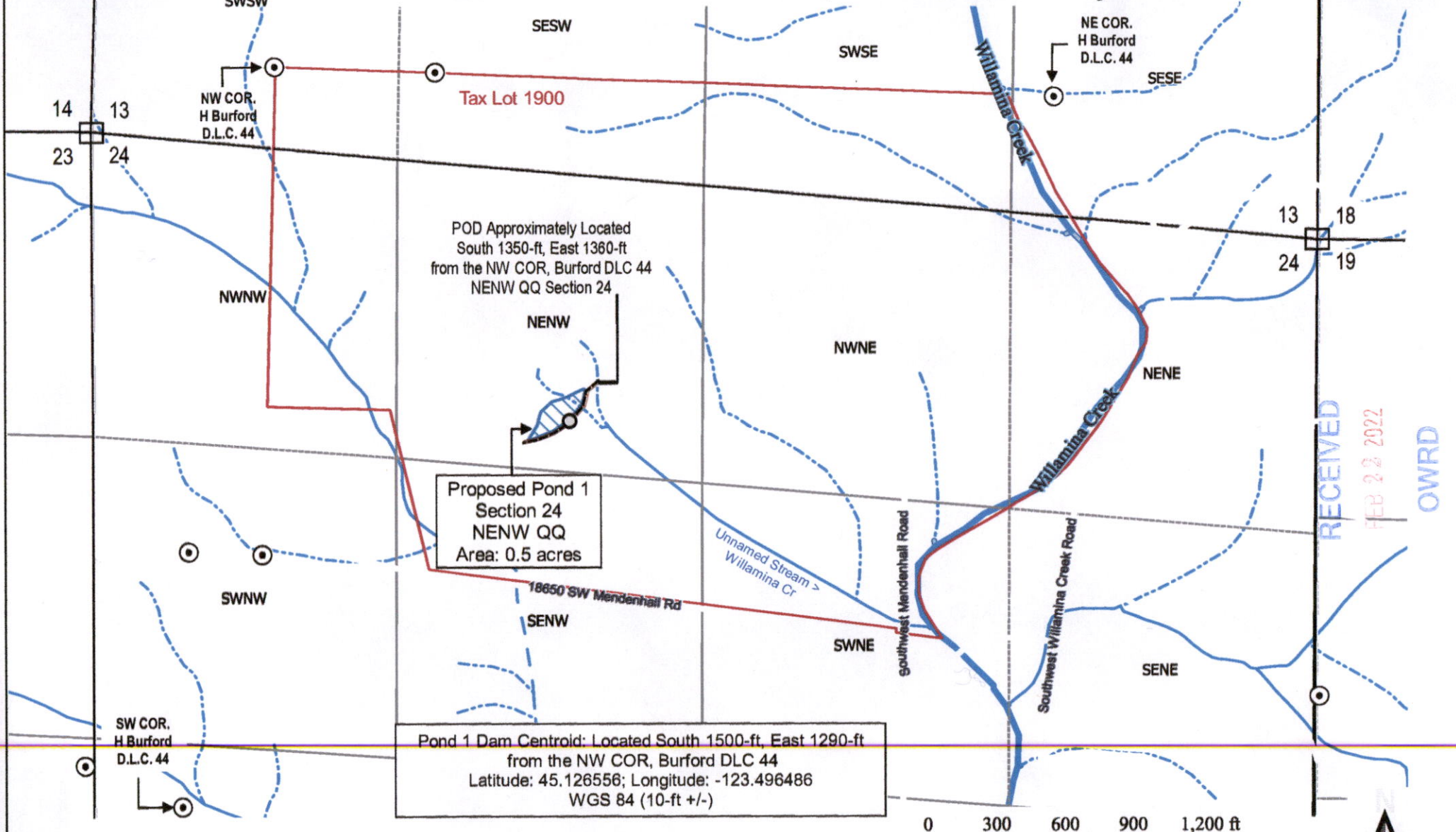


# T. 5S. R. 7W. Sections. 24 & 13, W.M. Yamhill County



POD Approximately Located  
 South 1350-ft, East 1360-ft  
 from the NW COR, Burford DLC 44  
 NENW QQ Section 24

Proposed Pond 1  
 Section 24  
 NENW QQ  
 Area: 0.5 acres

Pond 1 Dam Centroid: Located South 1500-ft, East 1290-ft  
 from the NW COR, Burford DLC 44  
 Latitude: 45.126556; Longitude: -123.496486  
 WGS 84 (10-ft +/-)

- ⊙ DLC Corner Point
- ⊙ Dam Center Point
- ▭ Tax Lot 1900
- USGS NHD Flowline
- Perennial Creek
- Perennial Stream
- - - Intermittent
- · - · - Ditch

**DISCLAIMER**  
 This map was prepared for the purpose of identifying the location of water right only and is not intended to provide legal dimensions or location of property ownership lines.

Proposed Pond 1 Location Map To Accompany Belle Mare Farm  
 Application for a Permit to Store Water in a Reservoir (Alternate Review)  
 Tax Lot 1900, Tax Map 5 7 24

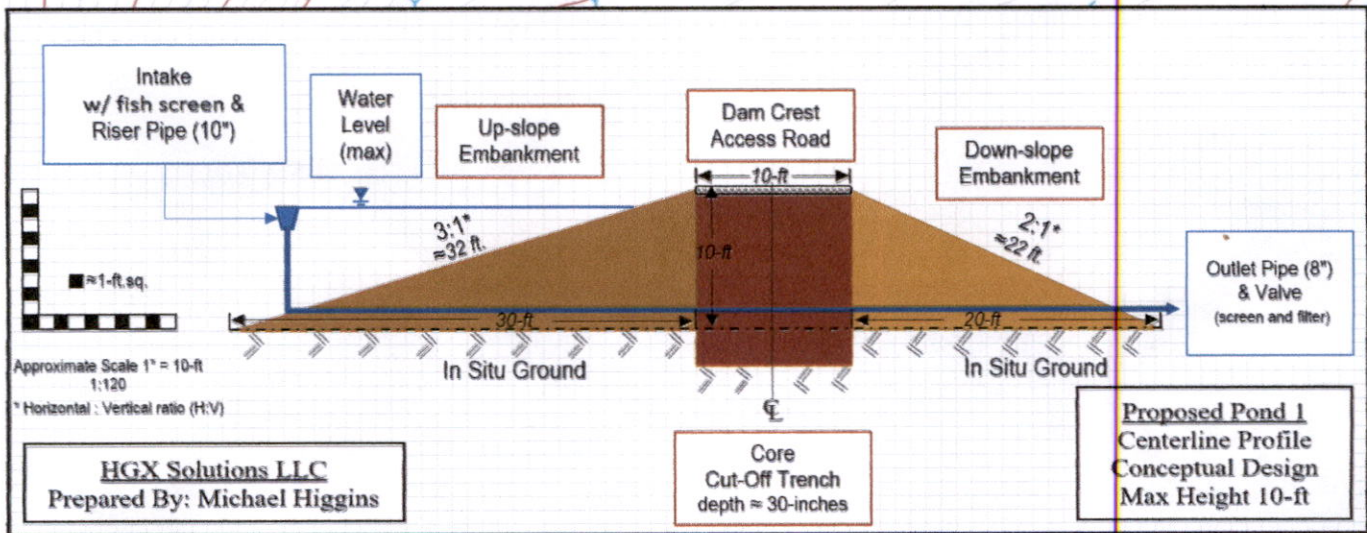
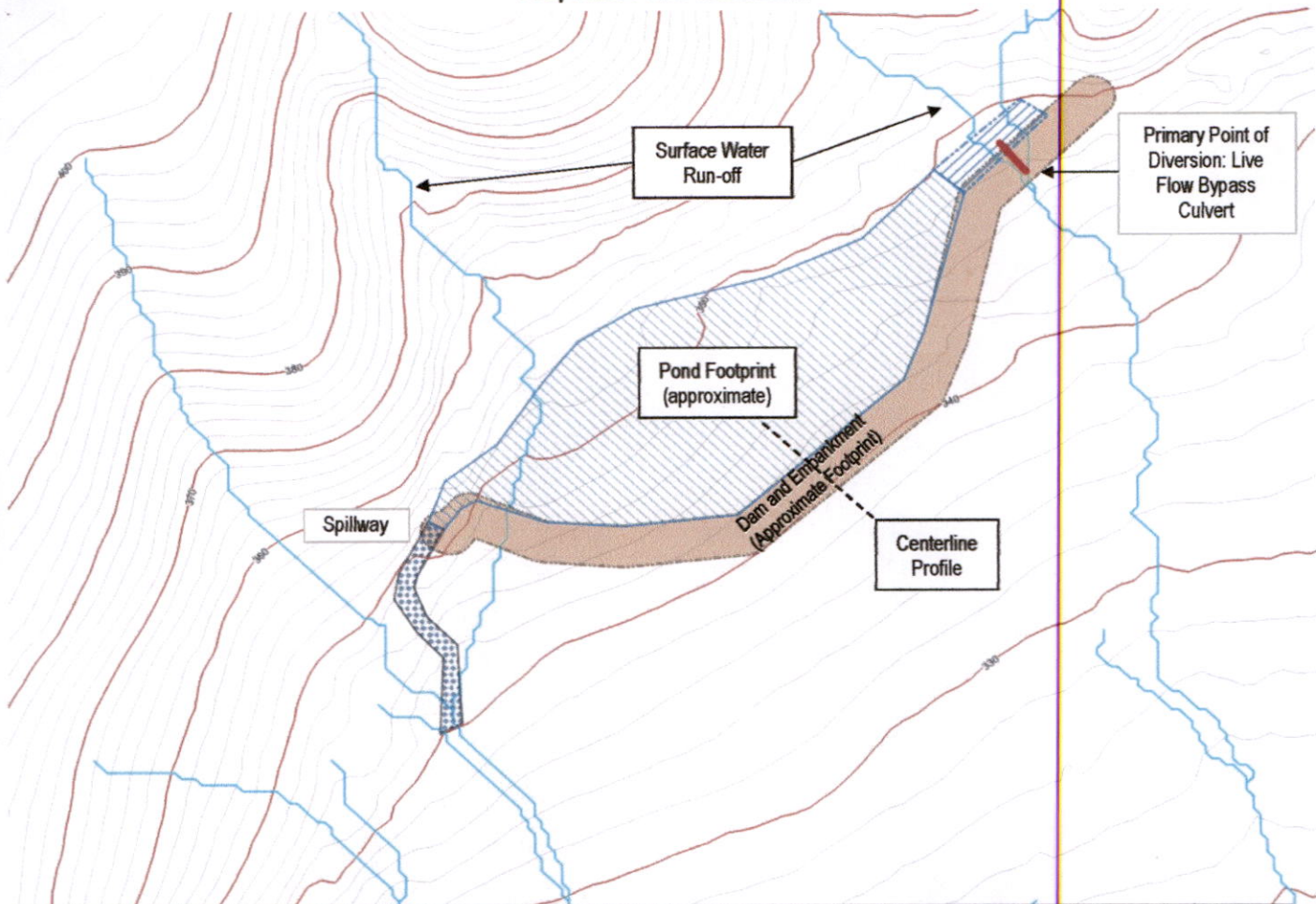
Source:  
 EPSG:2913 - NAD83(HARN) / Oregon North (ft) - Projected  
 GIS Data: USGS, Oregon Spatial Data Library  
 Scale 1" = 600' when printed at 8.5"x11.0" (Letter)

HGX Solutions, LLC.

10/14/21 MJH

RECEIVED  
 FEB 22 2022  
 OWRD

**Belle Mare Farm Application for a Permit to Store Water in a Reservoir (Alternate Review): Section 7**  
**\*Proposed Pond 1 and Dam**



**HGX Solutions LLC**  
 Prepared By: Michael Higgins

\* Notes:  
 Copy not to scale.  
 Design considerations for outlet system, pond and dam footprint dimensions and elevations are subject to change.

RECEIVED

FEB 22 2022

OWRD