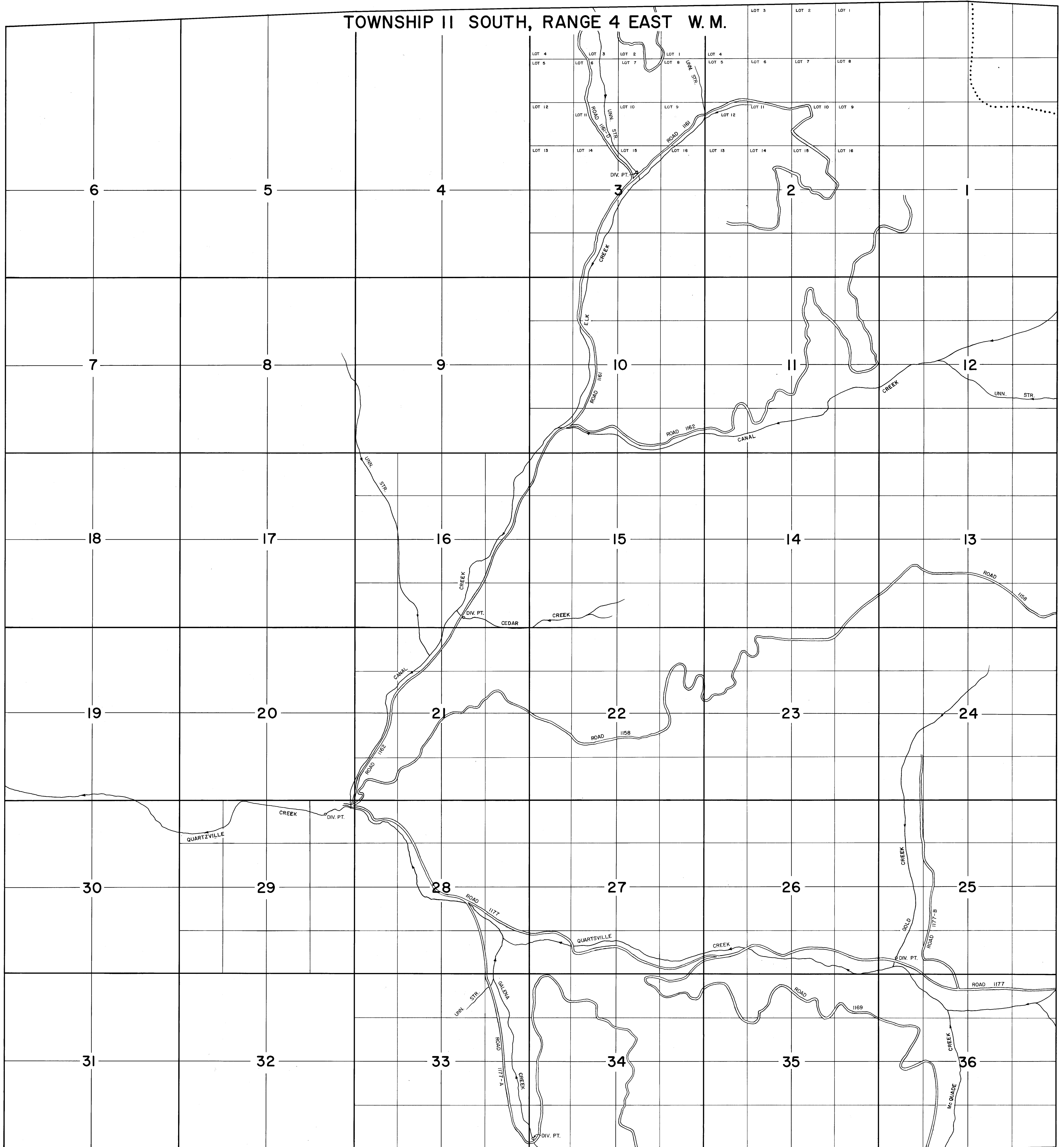
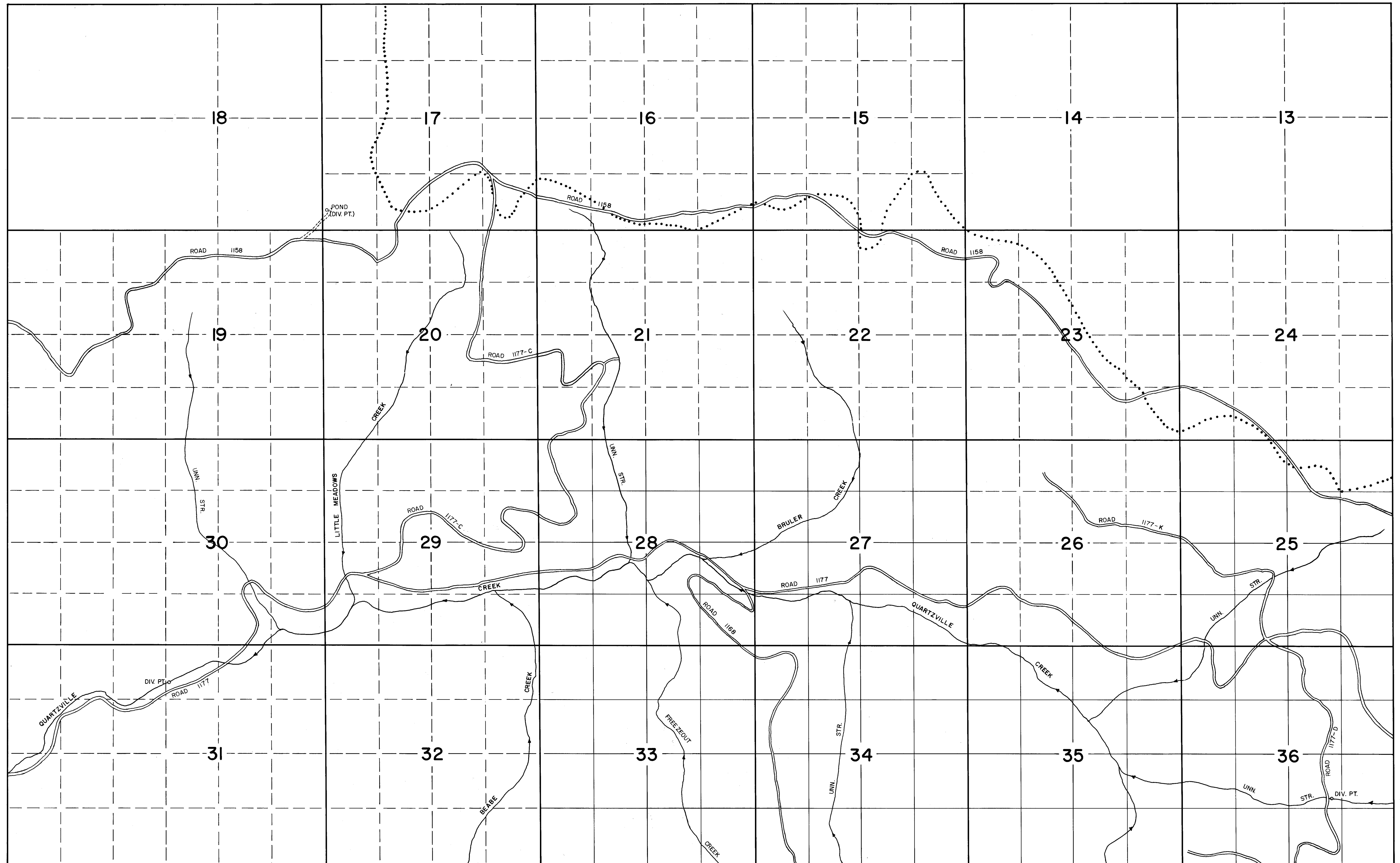


TOWNSHIP II SOUTH, RANGE 4 EAST W. M.

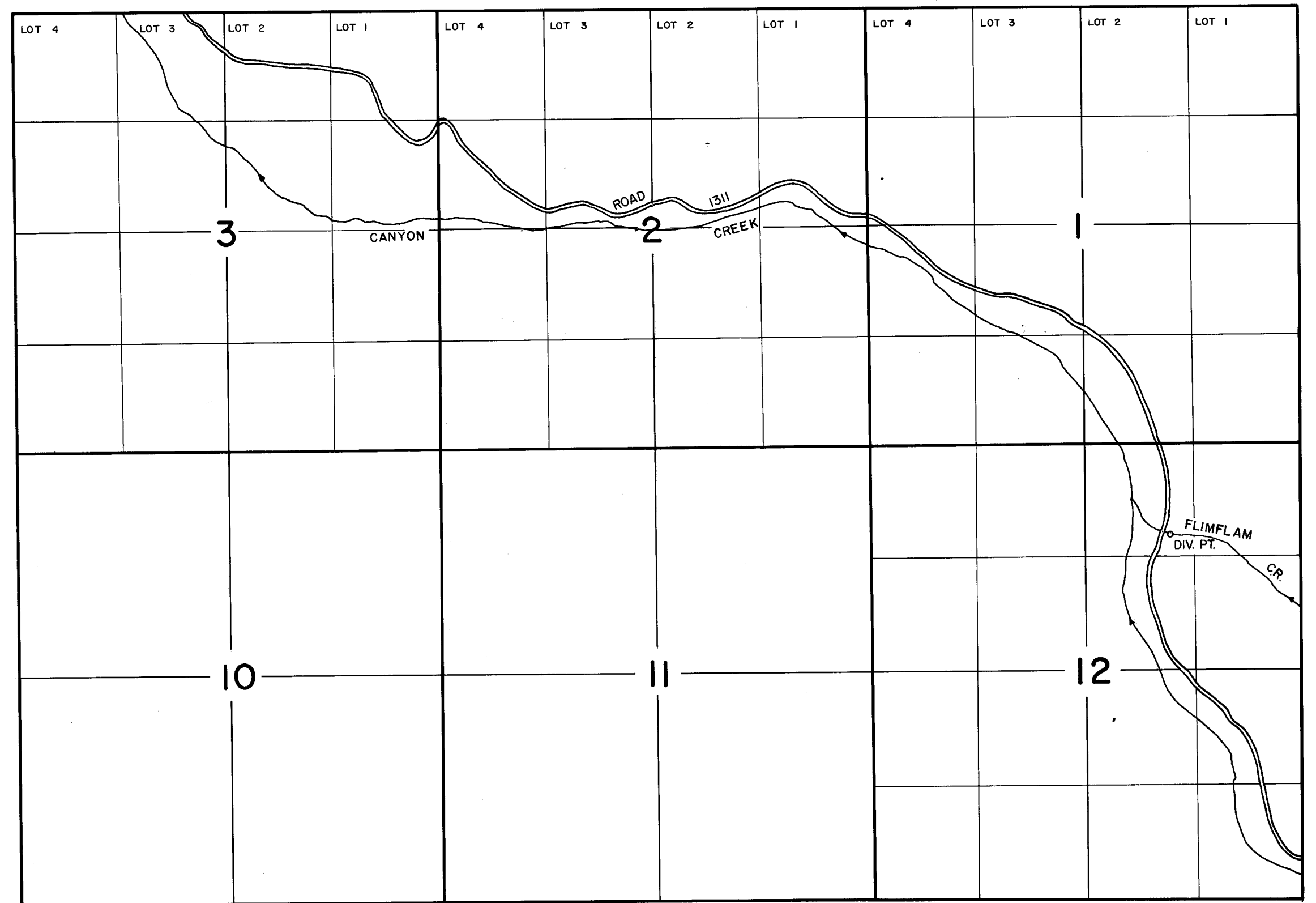


TOWNSHIP II SOUTH, RANGE 5 EAST W.M.

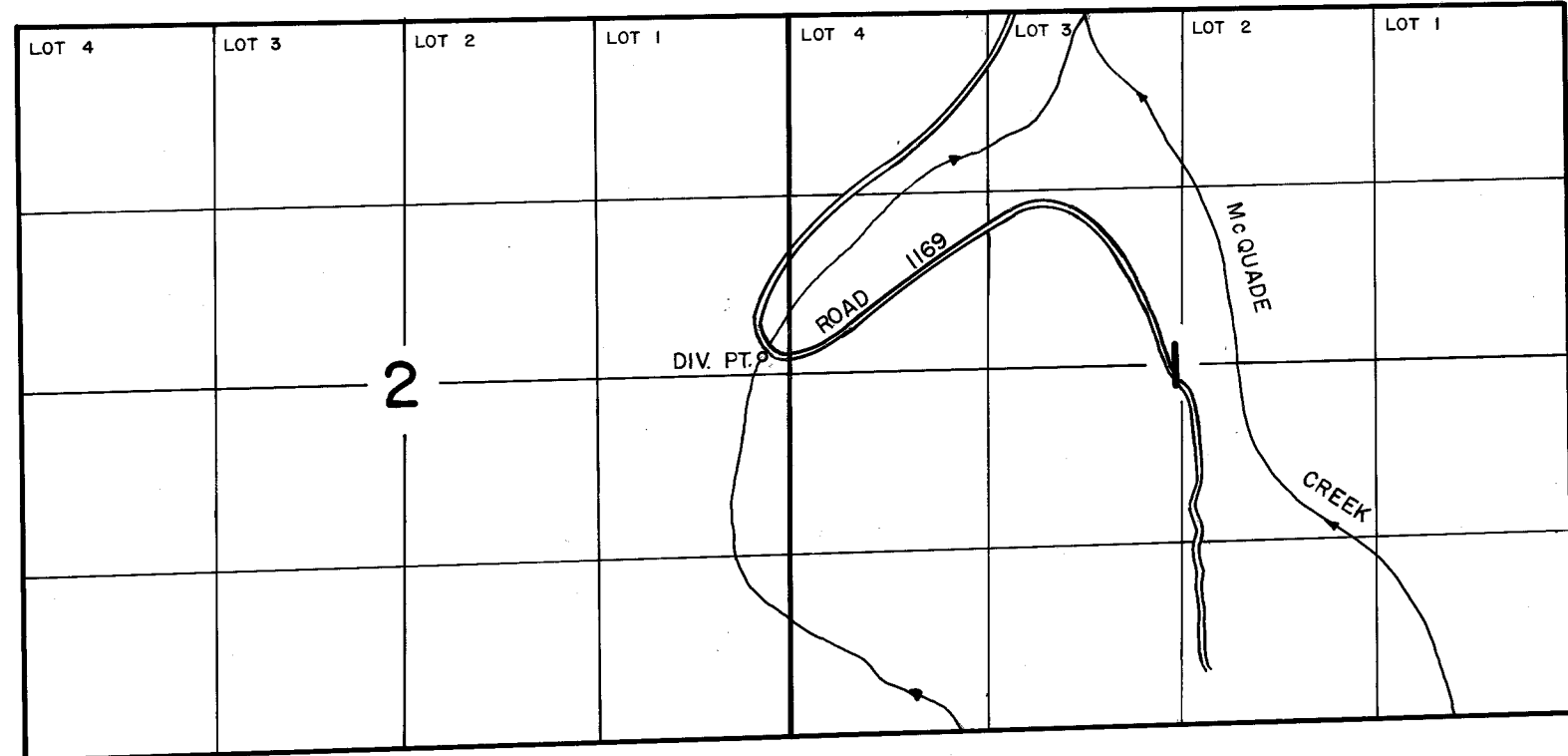


NOTE: SECTIONS 13-24, 26, 29-32 ARE PROJECTED WITHIN UNSURVEYED TERRITORY

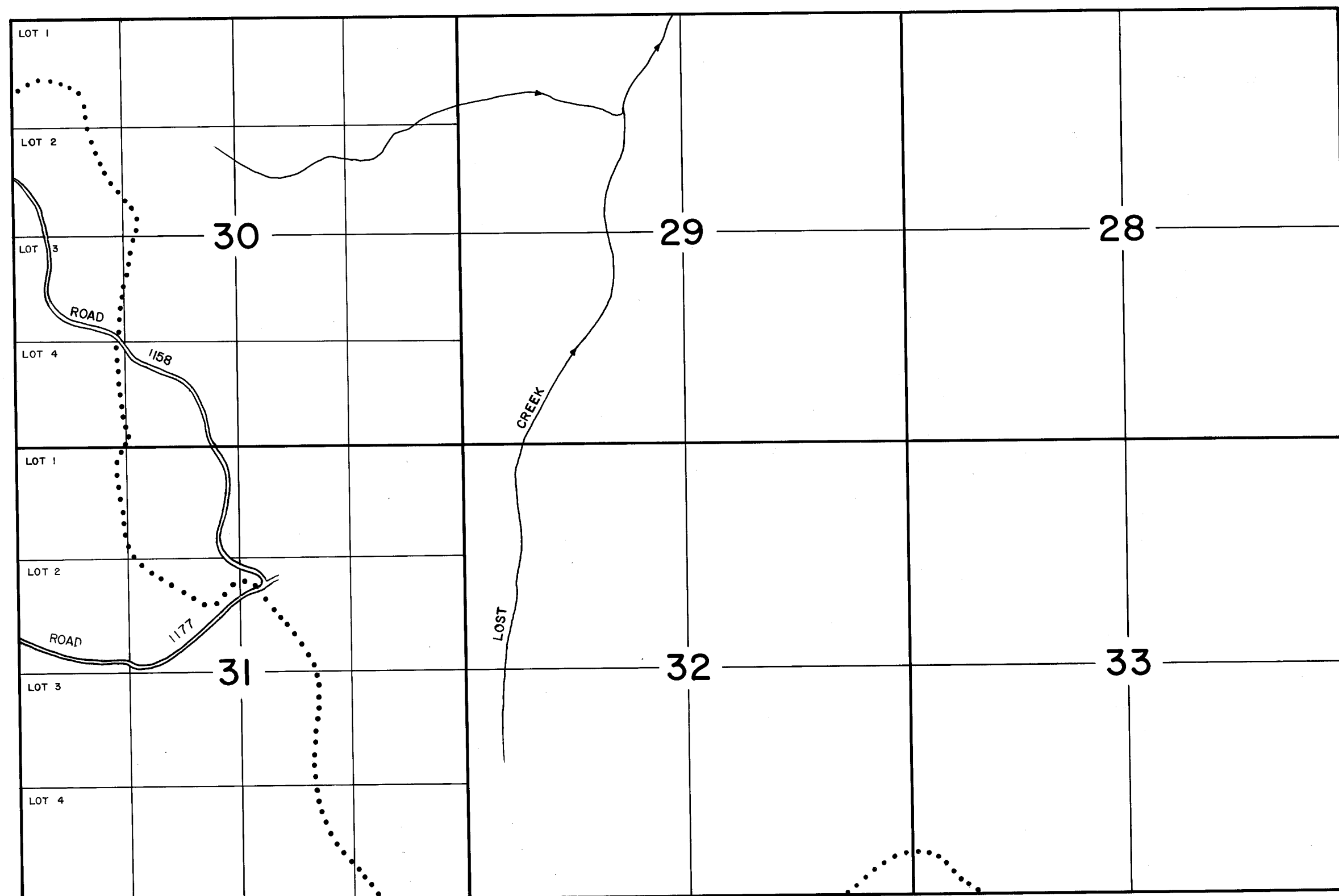
TOWNSHIP 14 SOUTH, RANGE 3 EAST W. M.



TOWNSHIP 12 SOUTH, RANGE 4 EAST W. M.



TOWNSHIP 11 SOUTH, RANGE 6 EAST W. M.



TOWNSHIP 12 SOUTH, RANGE 4 EAST W. M.

