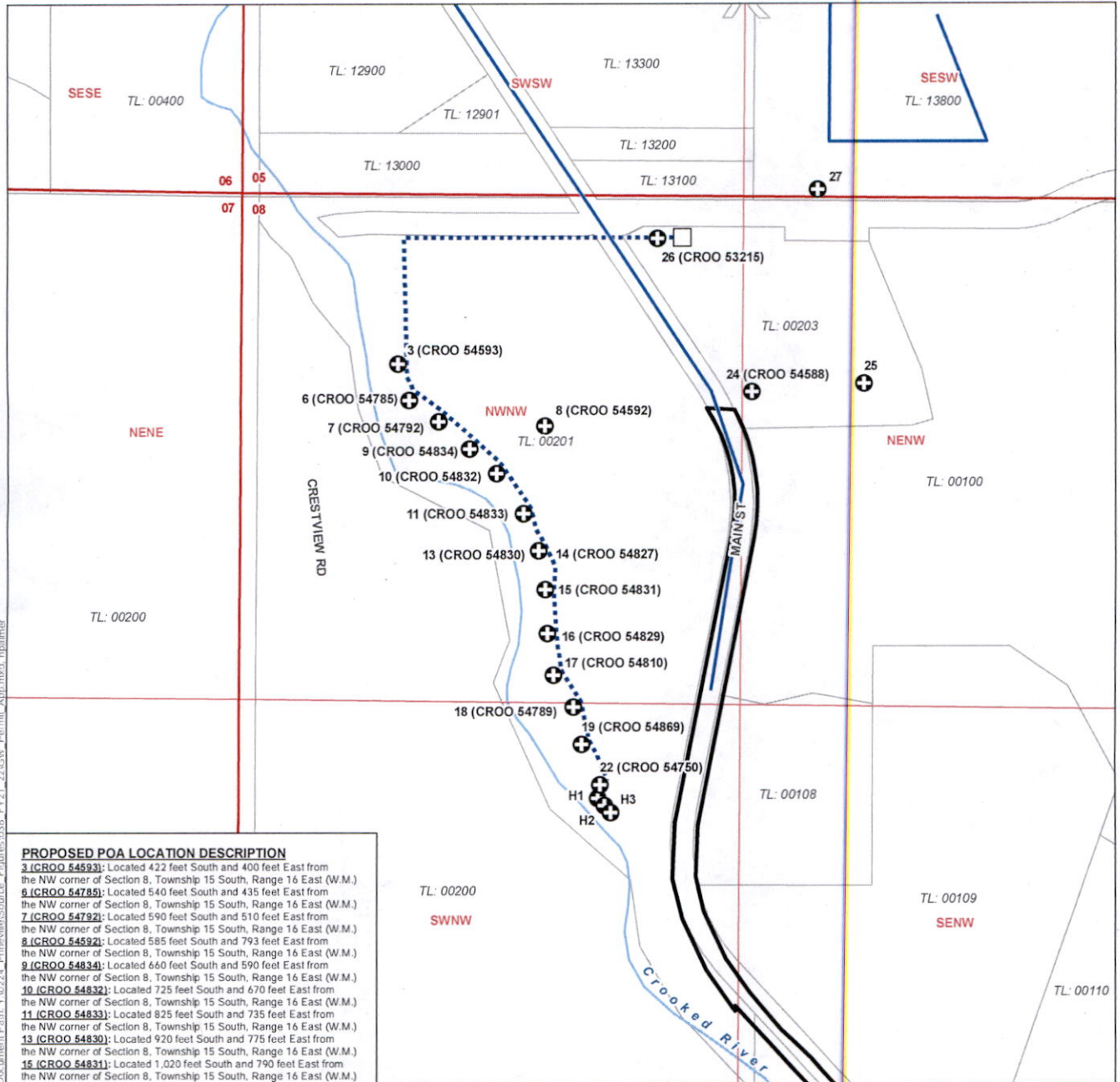


Groundwater Permit Application, City of Prineville

Proposed Points of Appropriation
 Crook County, Oregon
 Township 15 South, Range 16 East (W.M.)



PROPOSED POA LOCATION DESCRIPTION

3 (CROO 54593): Located 422 feet South and 400 feet East from the NW corner of Section 8, Township 15 South, Range 16 East (W.M.)

6 (CROO 54785): Located 540 feet South and 435 feet East from the NW corner of Section 8, Township 15 South, Range 16 East (W.M.)

7 (CROO 54792): Located 590 feet South and 510 feet East from the NW corner of Section 8, Township 15 South, Range 16 East (W.M.)

8 (CROO 54592): Located 585 feet South and 793 feet East from the NW corner of Section 8, Township 15 South, Range 16 East (W.M.)

9 (CROO 54834): Located 660 feet South and 590 feet East from the NW corner of Section 8, Township 15 South, Range 16 East (W.M.)

10 (CROO 54832): Located 725 feet South and 670 feet East from the NW corner of Section 8, Township 15 South, Range 16 East (W.M.)

11 (CROO 54833): Located 825 feet South and 735 feet East from the NW corner of Section 8, Township 15 South, Range 16 East (W.M.)

13 (CROO 54830): Located 920 feet South and 775 feet East from the NW corner of Section 8, Township 15 South, Range 16 East (W.M.)

15 (CROO 54831): Located 1,020 feet South and 790 feet East from the NW corner of Section 8, Township 15 South, Range 16 East (W.M.)

16 (CROO 54829): Located 1,130 feet South and 800 feet East from the NW corner of Section 8, Township 15 South, Range 16 East (W.M.)

17 (CROO 54810): Located 1,240 feet South and 815 feet East from the NW corner of Section 8, Township 15 South, Range 16 East (W.M.)

18 (CROO 54789): Located 1,325 feet South and 865 feet East from the NW corner of Section 8, Township 15 South, Range 16 East (W.M.)

19 (CROO 54869): Located 1,425 feet South and 890 feet East from the NW corner of Section 8, Township 15 South, Range 16 East (W.M.)

22 (CROO 54750): Located 1,535 feet South and 940 feet East from the NW corner of Section 8, Township 15 South, Range 16 East (W.M.)

24 (CROO 54588): Located 510 feet South and 1,330 feet East from the NW corner of Section 8, Township 15 South, Range 16 East (W.M.)

25: Located 485 feet South and 1,620 feet East from the NW corner of Section 8, Township 15 South, Range 16 East (W.M.)

26 (CROO 53215): Located 105 feet South and 1,080 feet East from the NW corner of Section 8, Township 15 South, Range 16 East (W.M.)

27: Located 170 feet South and 1,500 feet East from the NW corner of Section 8, Township 15 South, Range 16 East (W.M.)

H1: Located 1,565 feet South and 930 feet East from the NW corner of Section 8, Township 15 South, Range 16 East (W.M.)

H2: Located 1,575 feet South and 940 feet East from the NW corner of Section 8, Township 15 South, Range 16 East (W.M.)

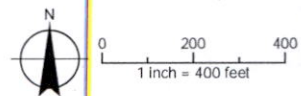
H3: Located 1,585 feet South and 950 feet East from the NW corner of Section 8, Township 15 South, Range 16 East (W.M.)

- LEGEND**
- ⊕ Proposed Point of Appropriation (POA)
 - Water Treatment Plant
 - Existing Water Mainline
 - Pipeline
 - ▭ Prineville City Limit
 - Tax Lot
 - ~ Watercourse
 - Waterbody

DISCLAIMER
 This map was prepared for the purpose of identifying the location of a water right only and it is not intended to provide legal dimensions or location of property ownership lines.

MAP NOTES
 Date: January 10, 2022
 Data Sources: OGIC, USGS, ESRI, OWRD, DOGAMI

RECEIVED
 MAR 07 2022



Document Path: Y:\0224 - Prineville\Source_Figures\0336_FY21_22\GW_Permit_App.mxd, ngahmer

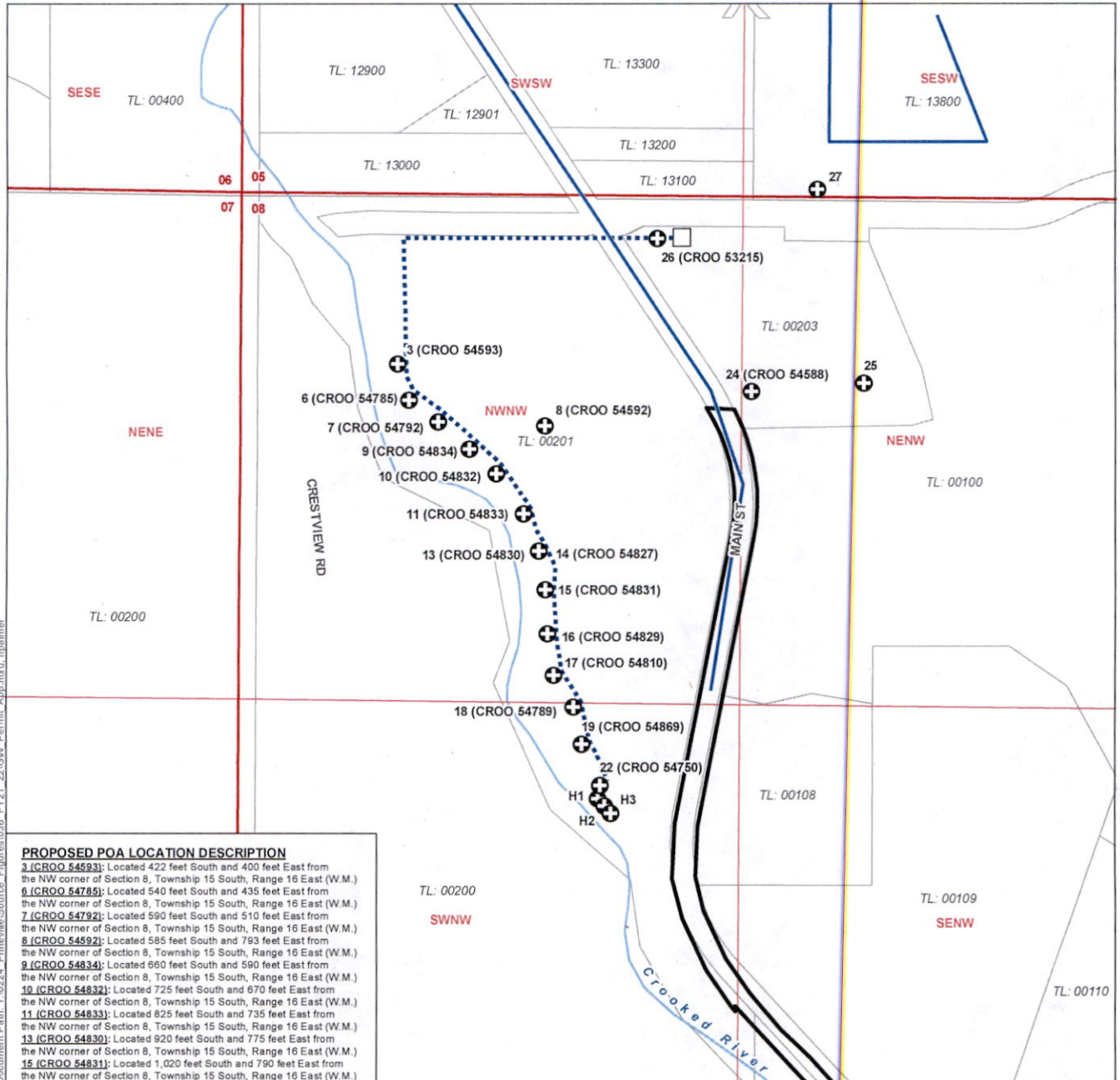
OWRD

Groundwater Permit Application, City of Prineville

Proposed Points of Appropriation

Crook County, Oregon

Township 15 South, Range 16 East (W.M.)



PROPOSED POA LOCATION DESCRIPTION

- 3 (CROO 54593):** Located 422 feet South and 400 feet East from the NW corner of Section 8, Township 15 South, Range 16 East (W.M.)
- 6 (CROO 54785):** Located 540 feet South and 435 feet East from the NW corner of Section 8, Township 15 South, Range 16 East (W.M.)
- 7 (CROO 54792):** Located 590 feet South and 510 feet East from the NW corner of Section 8, Township 15 South, Range 16 East (W.M.)
- 8 (CROO 54592):** Located 585 feet South and 793 feet East from the NW corner of Section 8, Township 15 South, Range 16 East (W.M.)
- 9 (CROO 54834):** Located 660 feet South and 590 feet East from the NW corner of Section 8, Township 15 South, Range 16 East (W.M.)
- 10 (CROO 54832):** Located 725 feet South and 670 feet East from the NW corner of Section 8, Township 15 South, Range 16 East (W.M.)
- 11 (CROO 54833):** Located 825 feet South and 735 feet East from the NW corner of Section 8, Township 15 South, Range 16 East (W.M.)
- 13 (CROO 54830):** Located 920 feet South and 775 feet East from the NW corner of Section 8, Township 15 South, Range 16 East (W.M.)
- 15 (CROO 54831):** Located 1,020 feet South and 790 feet East from the NW corner of Section 8, Township 15 South, Range 16 East (W.M.)
- 16 (CROO 54829):** Located 1,130 feet South and 800 feet East from the NW corner of Section 8, Township 15 South, Range 16 East (W.M.)
- 17 (CROO 54810):** Located 1,240 feet South and 815 feet East from the NW corner of Section 8, Township 15 South, Range 16 East (W.M.)
- 18 (CROO 54789):** Located 1,325 feet South and 865 feet East from the NW corner of Section 8, Township 15 South, Range 16 East (W.M.)
- 19 (CROO 54869):** Located 1,425 feet South and 890 feet East from the NW corner of Section 8, Township 15 South, Range 16 East (W.M.)
- 22 (CROO 54750):** Located 1,535 feet South and 940 feet East from the NW corner of Section 8, Township 15 South, Range 16 East (W.M.)
- 24 (CROO 54588):** Located 510 feet South and 1,330 feet East from the NW corner of Section 8, Township 15 South, Range 16 East (W.M.)
- 25:** Located 485 feet South and 1,620 feet East from the NW corner of Section 8, Township 15 South, Range 16 East (W.M.)
- 26 (CROO 53215):** Located 105 feet South and 1,080 feet East from the NW corner of Section 8, Township 15 South, Range 16 East (W.M.)
- 27:** Located 170 feet South and 1,500 feet East from the NW corner of Section 8, Township 15 South, Range 16 East (W.M.)
- H1:** Located 1,565 feet South and 930 feet East from the NW corner of Section 8, Township 15 South, Range 16 East (W.M.)
- H2:** Located 1,575 feet South and 940 feet East from the NW corner of Section 8, Township 15 South, Range 16 East (W.M.)
- H3:** Located 1,585 feet South and 950 feet East from the NW corner of Section 8, Township 15 South, Range 16 East (W.M.)

LEGEND

- Proposed Point of Appropriation (POA)
- Water Treatment Plant
- Existing Water Mainline
- Pipeline
- Prineville City Limit
- Tax Lot
- Watercourse
- Waterbody

DISCLAIMER

This map was prepared for the purpose of identifying the location of a water right only and it is not intended to provide legal dimensions or location of property ownership lines.

MAP NOTES

Date: January 10, 2022
Data Sources: OGIC, USGS, ESRI, OWRD, DOGAMI

RECEIVED

MAR 07 2022

OWRD



Document Path: Y:\0224 - Prineville\Source_Figures\036_FY21_22\GW_Permit_App.mxd, upalmer

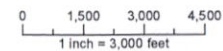
**Application for a
Groundwater Permit
in the Name of City of Prineville
Proposed Place of Use**

LEGEND

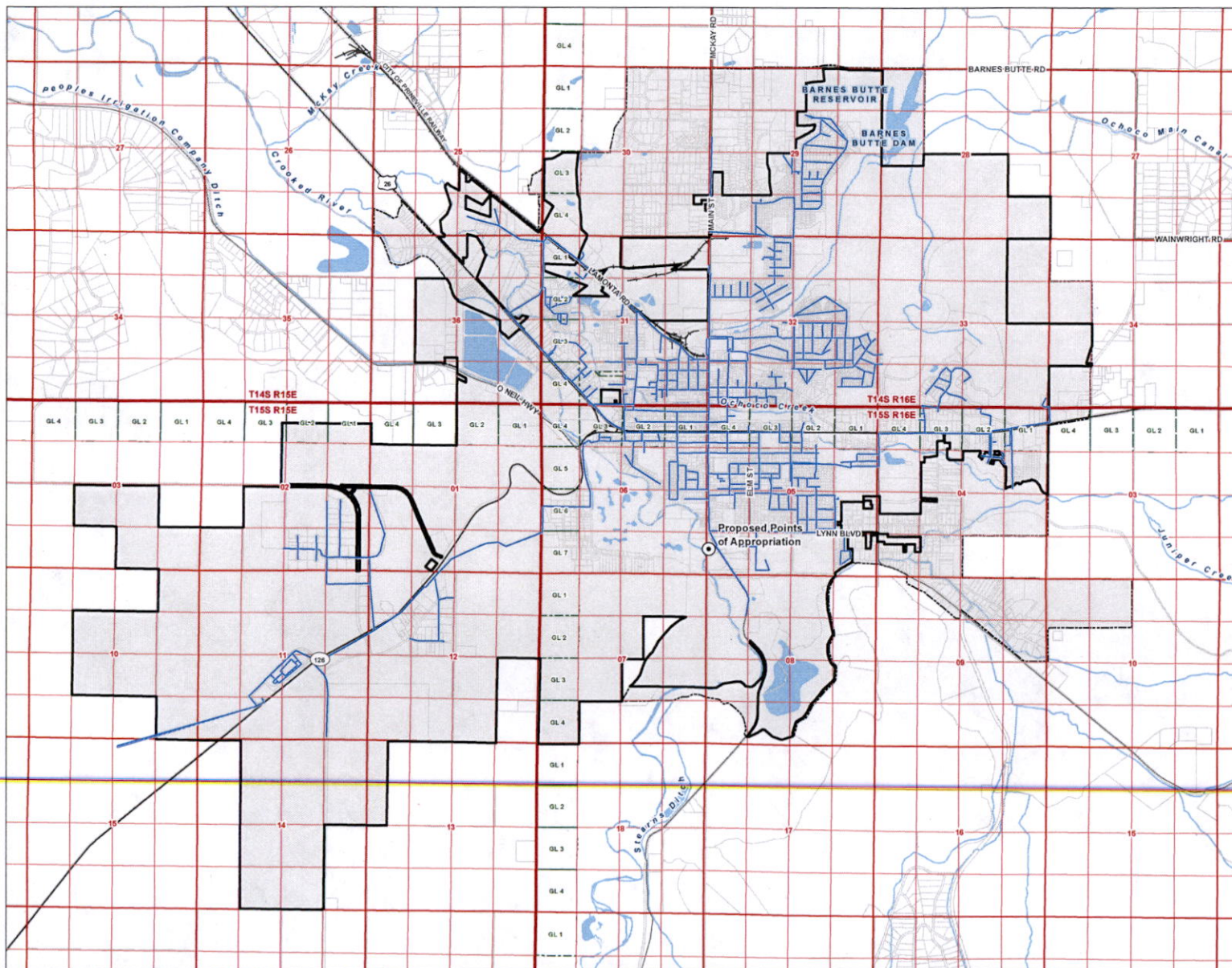
- Proposed Points of Appropriation (POA)
- Proposed Place of Use (POU)
- Existing Water Mainline
- All Other Features**
- Tax Lot
- Government Lot (GL)
- ▭ Prineville City Limit
- ▭ Urban Growth Boundary
- Major Road
- Watercourse
- Waterbody

DISCLAIMER

This map was prepared for the purpose of identifying the location of a water right only and it is not intended to provide legal dimensions or location of property ownership lines.



Date: January 17, 2022
Data Sources: OWRD, Crook Co. GIS, OGIC, ESRI



Document Path: Y:\0224_Prineville\Source_Figures\036_FY21_22\GW_Permit_App_POU.mxd











RECEIVED

MAR 07 2022

OWRD

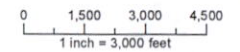
**Application for a
Groundwater Permit
in the Name of City of Prineville
Proposed Place of Use**

LEGEND

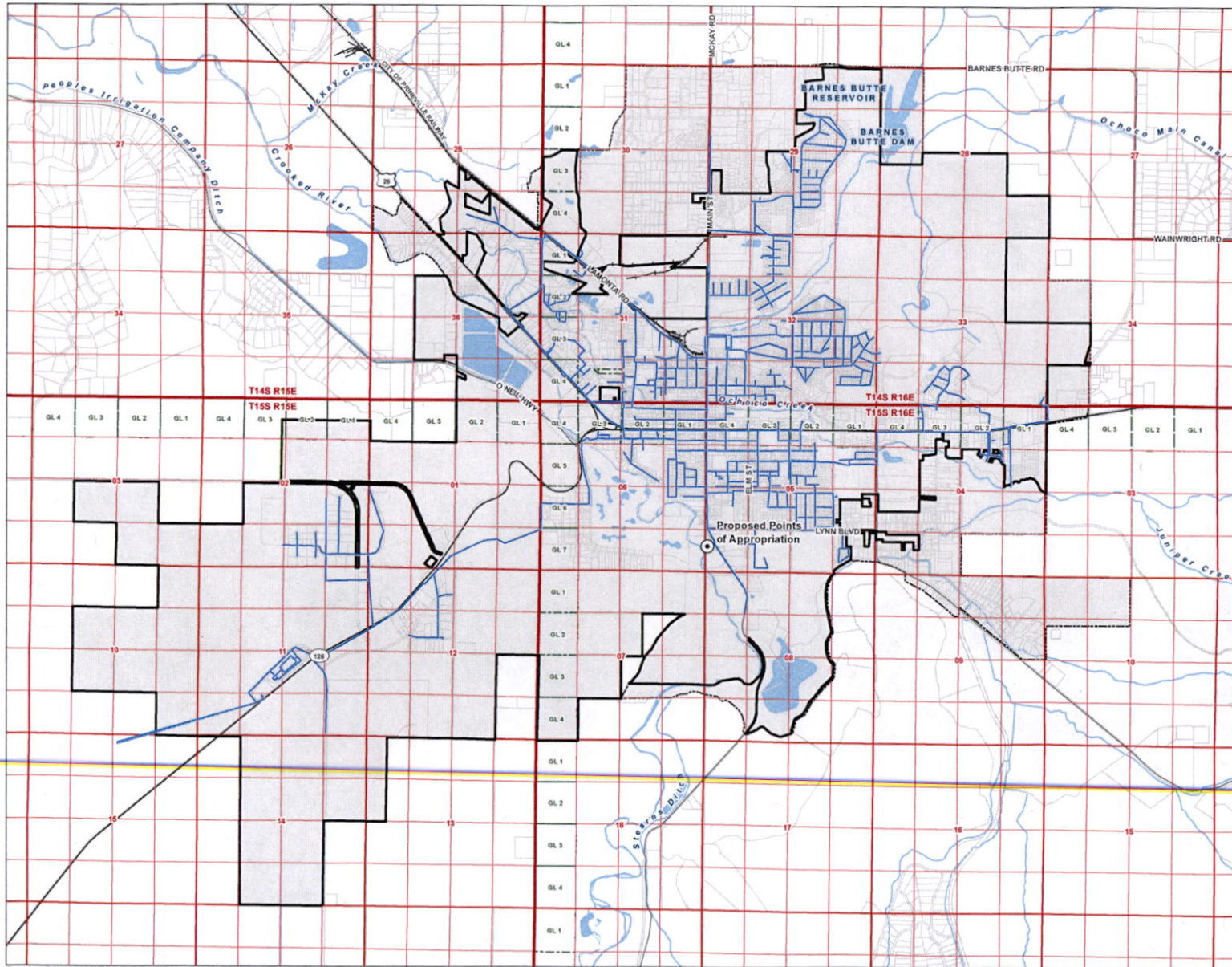
-  Proposed Points of Appropriation (POA)
-  Proposed Place of Use (POU)
-  Existing Water Mainline
- All Other Features**
-  Tax Lot
-  Government Lot (GL)
-  Prineville City Limit
-  Urban Growth Boundary
-  Major Road
-  Watercourse
-  Waterbody

DISCLAIMER

This map was prepared for the purpose of identifying the location of a water right only and it is not intended to provide legal dimensions or location of property ownership lines.



Date: January 17, 2022
Data Sources: OWRD, Crook Co. GIS, OGIC, ESRI



Document Path: Y:\0224_Prineville\Source_Figures\036_FY21_22GW_Permi_App_POU.mxd

RECEIVED

MAR 07 2022

OWRD