

1 inch = 150 feet

South Gilliam County Cemetery District Ground Water Application Map

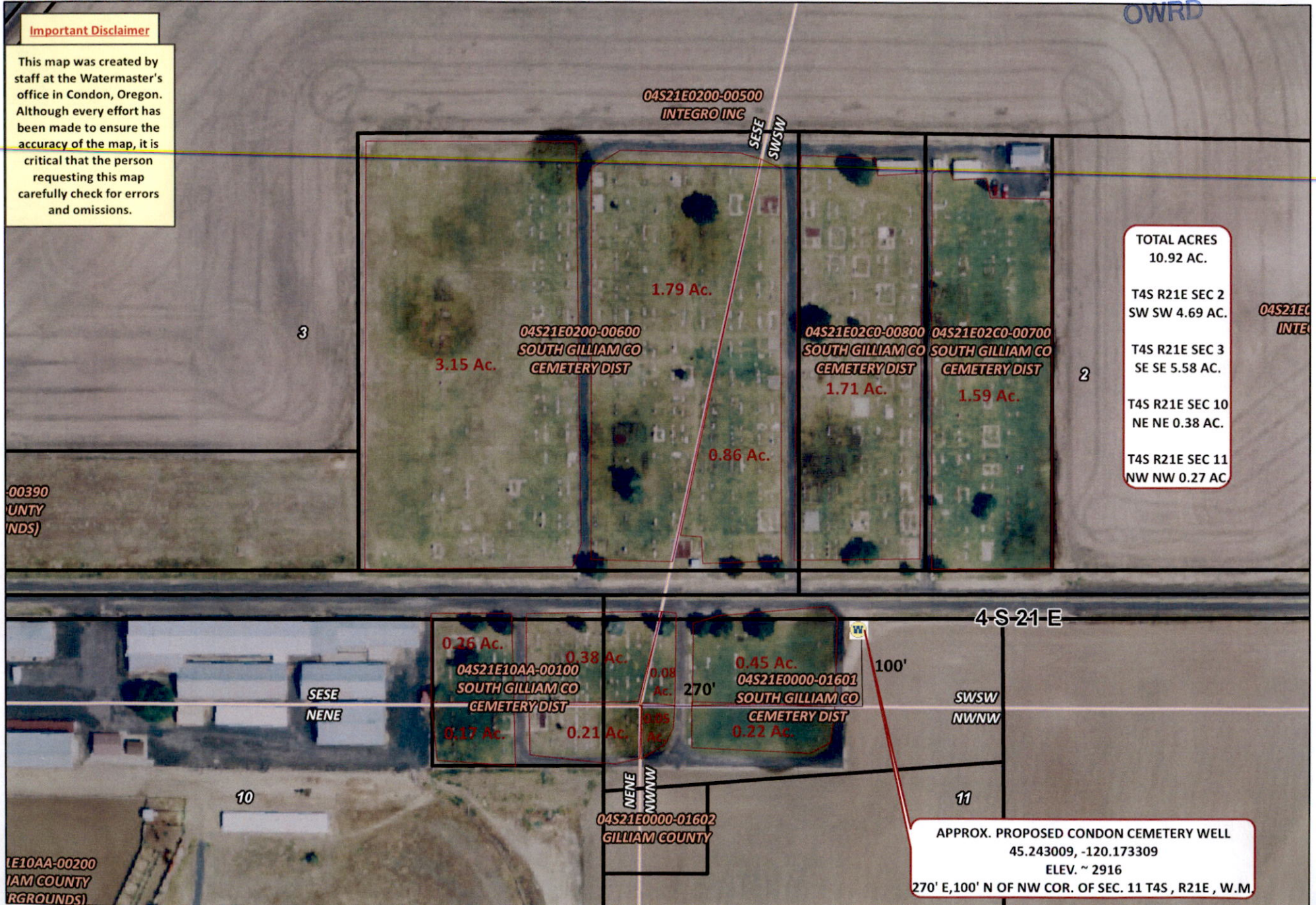
RECEIVED

MAR 17 2022

OWRD

Important Disclaimer

This map was created by staff at the Watermaster's office in Condon, Oregon. Although every effort has been made to ensure the accuracy of the map, it is critical that the person requesting this map carefully check for errors and omissions.



TOTAL ACRES
10.92 AC.

T4S R21E SEC 2
SW SW 4.69 AC.

T4S R21E SEC 3
SE SE 5.58 AC.

T4S R21E SEC 10
NE NE 0.38 AC.

T4S R21E SEC 11
NW NW 0.27 AC

APPROX. PROPOSED CONDON CEMETERY WELL
45.243009, -120.173309
ELEV. ~ 2916
270' E, 100' N OF NW COR. OF SEC. 11 T4S, R21E, W.M.

00390
UNTY
NDS)

1E10AA-00200
IAM COUNTY
RGROUNDS)

04S21E0
INTE

04S21E0000-01602
GILLIAM COUNTY

0.26 Ac.
04S21E10AA-00100
SOUTH GILLIAM CO
CEMETERY DIST
0.17 Ac.

0.38 Ac.
0.21 Ac.

0.08 Ac.
0.05 Ac.

0.45 Ac.
04S21E0000-01601
SOUTH GILLIAM CO
CEMETERY DIST
0.22 Ac.

04S21E0200-00500
INTEGRO INC

3.15 Ac.
04S21E0200-00600
SOUTH GILLIAM CO
CEMETERY DIST

1.79 Ac.

0.86 Ac.

1.71 Ac.
04S21E0200-00800
SOUTH GILLIAM CO
CEMETERY DIST

1.59 Ac.
04S21E0200-00700
SOUTH GILLIAM CO
CEMETERY DIST

4-S-21-E

SWSW
NWNW

3

2

10

11

100'

270'