

CLAIM OF BENEFICIAL USE

APPLICATION R-79634
APPLICATION S-71131

PERMIT R-12496
PERMIT S-53422

RECEIVED

MAR 25 2022

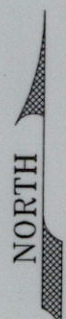
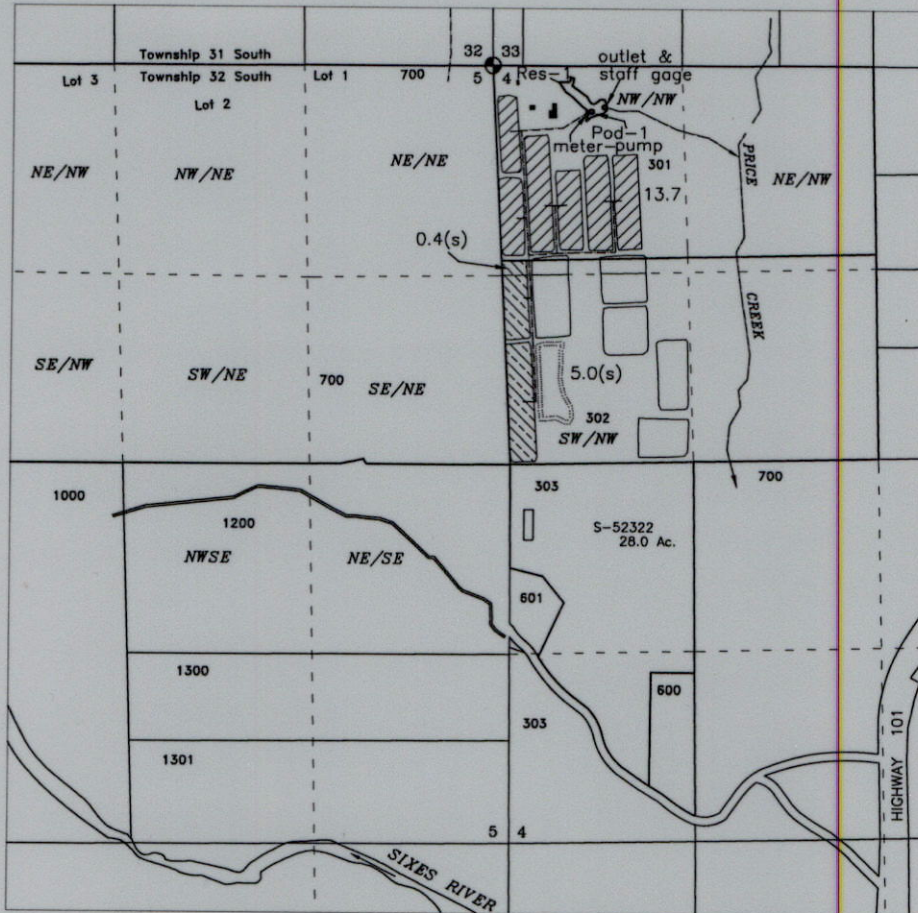
OWRD

RECEIVED

MAR 25 2022

OWRD

TOWNSHIP 32 SOUTH, RANGE 15 WEST, W.M.
CURRY COUNTY OREGON

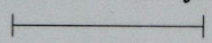


Legend

POD-1 - NW/NW Section 4: 315 feet South and 660 feet East from the NW Corner Section 4
Res-1 - NW/NW Section 4: 285 feet South and 780 feet East from the NW Corner Section 4 (Outlet)

PREPARED FOR:
George P. Bussmann
P.O. Box 302
Sixes, OR 97476

Scale
1 inch = 1320 feet



- Cranberry Use - 13.7 Acres



- Supplemental Cranberry Use - 5.4 Acres



- RESERVOIR - 1 - 8.4 Acre-Feet



Base map - Curry County GIS Tax Lots over 2014 Oregon Map & 5/9/16 Google aerial photo for assumed best fit (scaled, adjusted & oriented to area surveys)

This map is not intended to provide legal dimensions or locations of property ownership lines

Stamped/signed mylar & paper on file at Dept.

JORDAN ENGINEERING
460 JORDAN LANE
ROSEBURG, OR 97471
(541) 673-1931

4/2/2019 ned
Rev 2/9/2022 ned