

LLOYD V. COOLEY
POND
1989 ASCS PHOTO
J.P. SCHULTE, SCS

(52)

$\frac{2}{88}$

T1901

T18

T1600

DEVELOPED

20 1994

WATER DEPARTMENT
MILWAUKEE COUNTY
WATER DEPARTMENT

Section No. R
T18

NA

NA

CERTIFICATE NO. 69637

T1645

HEL

HEL

T18

T1885

T2819

HEL

HEL

NHEL

T2518

13 18
24 19

HEL

HEL

NHEL

NA

T1819

HEL

HEL

HEL

HEL

HEL

NHEL

NA

HEL

HEL

HEL

T606

NHEL

HEL

NA

HEL

NHEL

NHEL

NHEL

T1870

T24048

WILLIAM

1/4 NW VALLEY

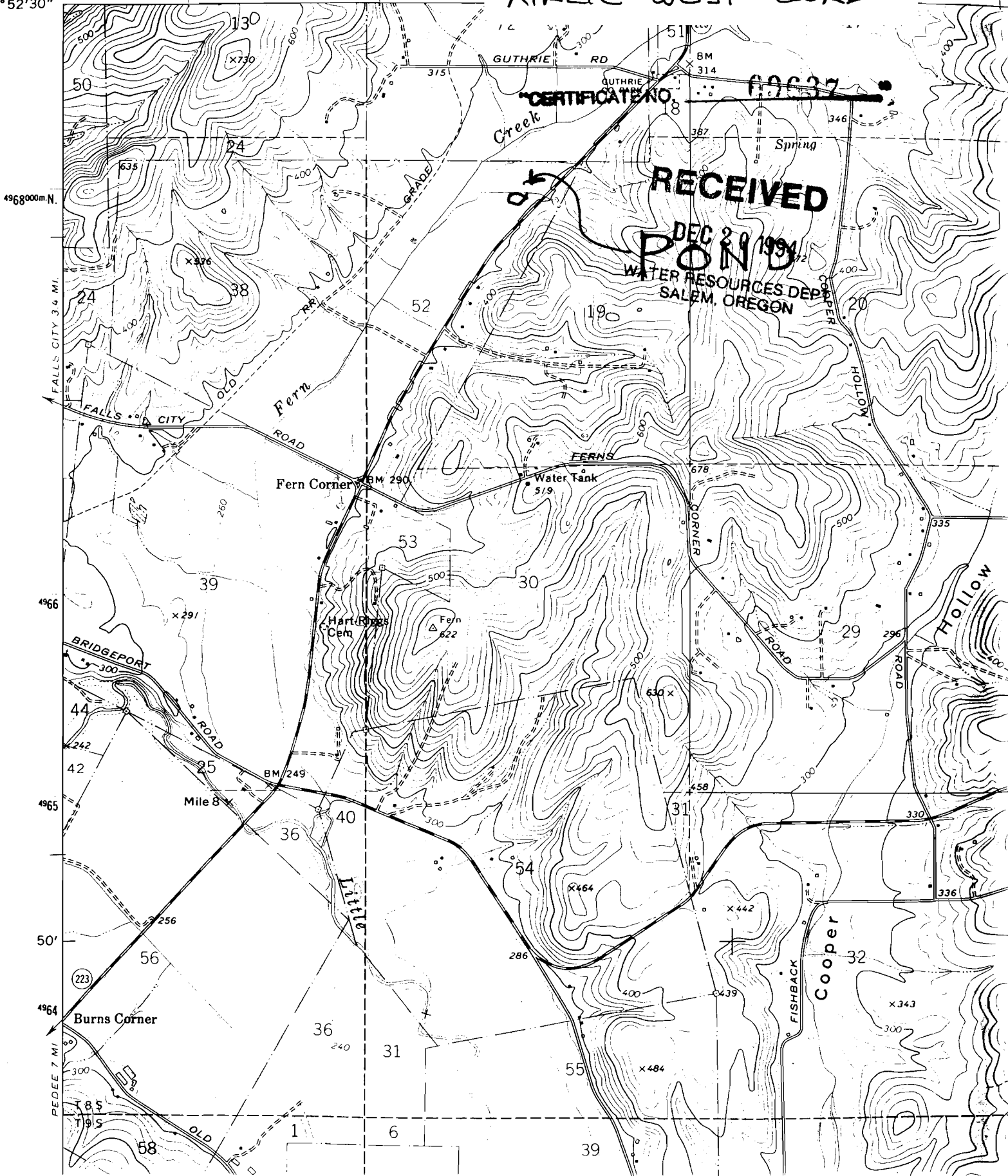
R-75580

UNITED STATES
DEPARTMENT OF THE INTERIOR
GEOLOGICAL SURVEY

LLOYD V. COOLEY POND
USGS TOPO
AIRLIE WEST QUAD

123°22'30"
44°52'30"

471000m.E. R6W R5W



4968000m.N.

FALLS CITY 3.4 MI

4966

4965

50'

4964

PEDEE 7 MI

1 6 39

58

47