

SECTION 21 T.2 S. R.3 W. W.M.

YAMHILL COUNTY

RECEIVED

DEC 20 1994

WATER RESOURCES DEPT.
SALEM, OREGON

2 3 21

CANCELLED 1401

1" = 400'

Application No. R-75644
Parcel No.

SEE SEC. 3 16

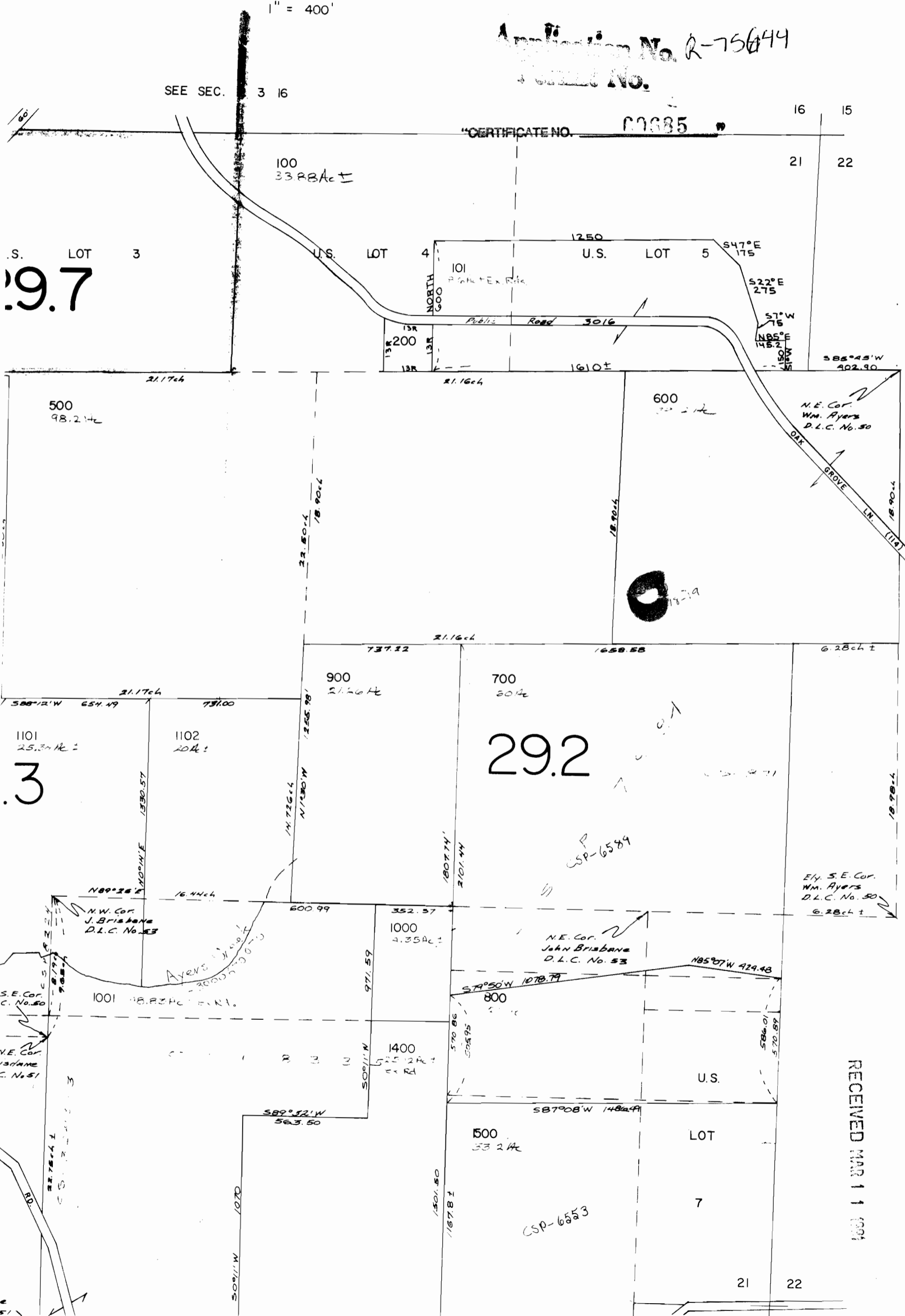
"CERTIFICATE NO. 00685"

9.7

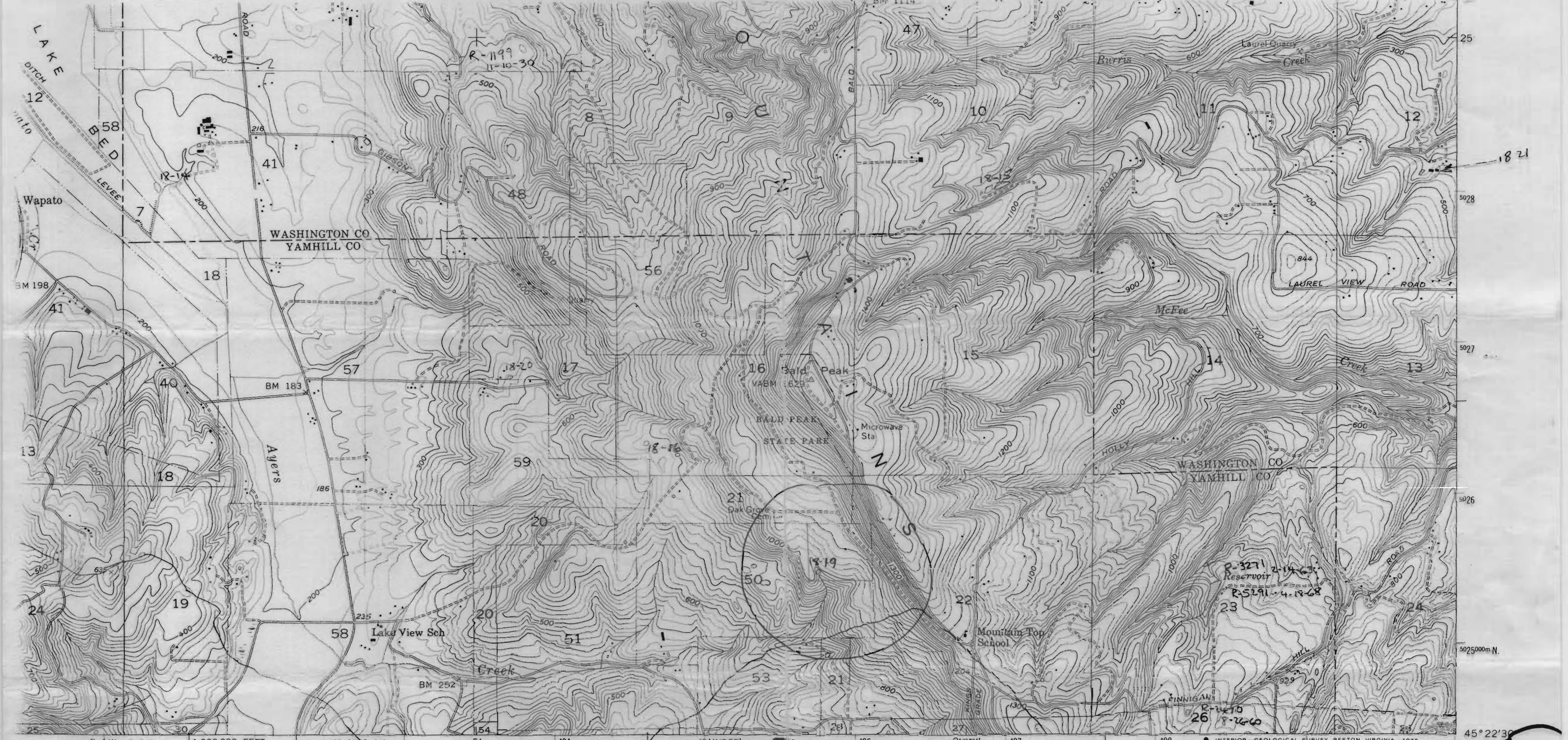
3

29.2

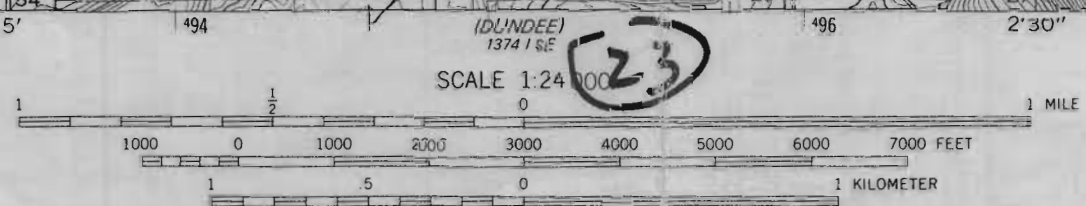
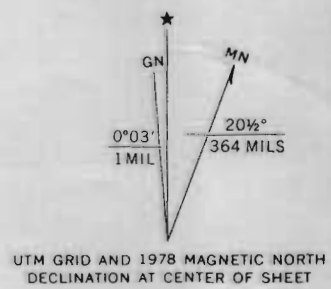
RECEIVED MAR 11 1994



SEE SEC. 2 3 22



ed, edited, and published by the Geological Survey
 by USGS, NOS/NOAA and USCE
 raphy from aerial photographs by multiplex methods
 lanetable surveys 1956. Aerial photographs taken 1954
 nic projection. 1927 North American datum
 0-foot grid based on Oregon coordinate system,
 one
 eter Universal Transverse Mercator grid ticks,
 O, shown in blue
 ns shown in purple compiled from aerial photographs
 1975. This information not field checked
 ited 1978



CONTOUR INTERVAL 20 FEET
 DOTTED LINES REPRESENT 10-FOOT CONTOURS
 NATIONAL GEODETIC VERTICAL DATUM OF 1929



ROAD CLASSIFICATION
 Medium-duty ——— Light-duty ———
 Unimproved dirt - - - - -
 ○ State Route

RECEIVED
DEC 20 1994
 WATER RESOURCES DEPT.
 SALEM, OREGON

LAURELWOOD, OREG.
 N4522.5—W12300/7.5

1956
 PHOTOREVISED 1978
 AMS 1374 1 NE—SERIES V892

THIS MAP COMPLIES WITH NATIONAL MAP ACCURACY STANDARDS
 FOR SALE BY U. S. GEOLOGICAL SURVEY, DENVER, COLORADO 80225, OR RESTON, VIRGINIA 22092
 A FOLDER DESCRIBING TOPOGRAPHIC MAPS AND SYMBOLS IS AVAILABLE ON REQUEST

Application No. R-75644
 Permit No.

"CERTIFICATE NO. 69685"

24
 (NE 1/4)
 1474 N SW

1