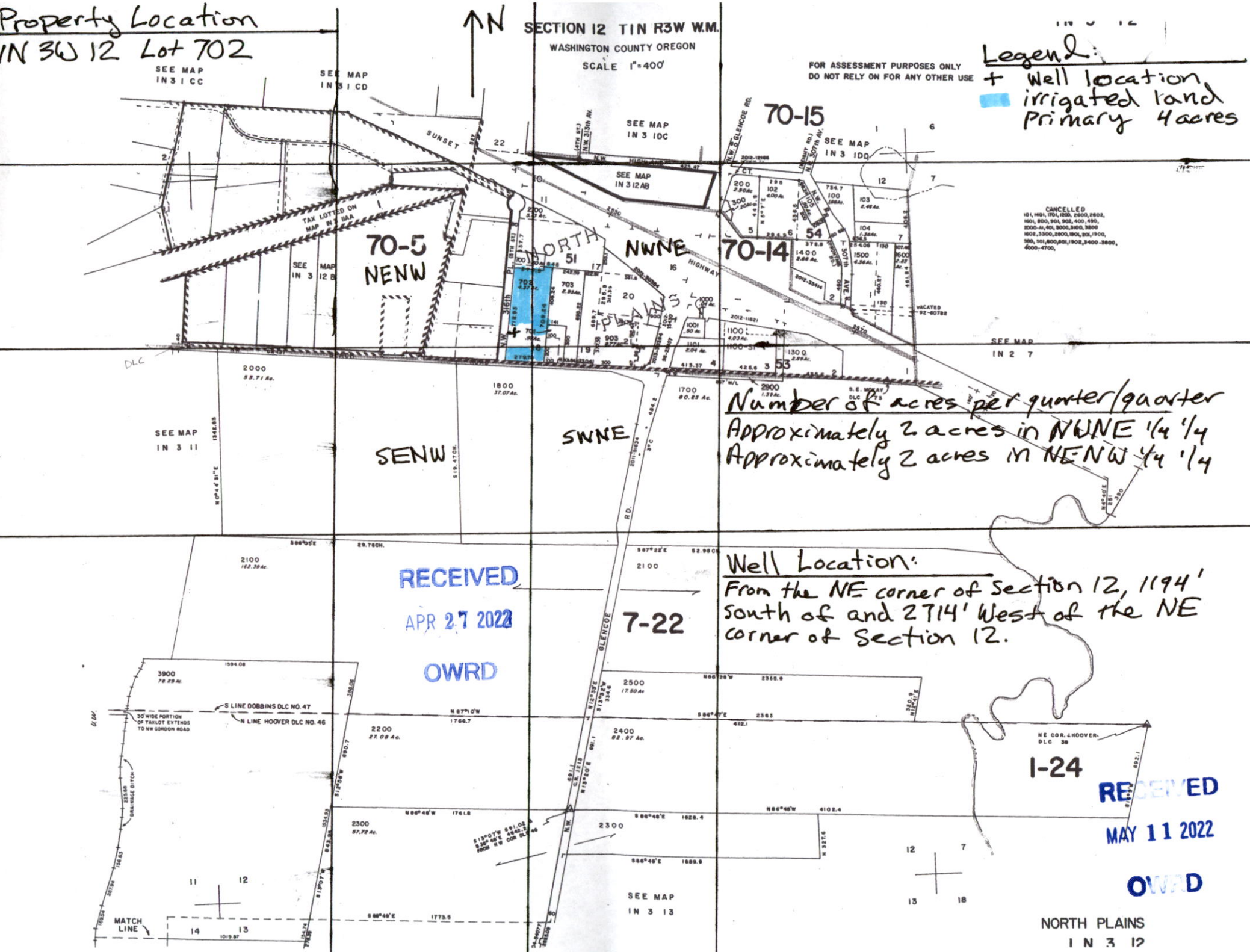


Property Location
IN 3W 12 Lot 702

SECTION 12 T1N R3W W.M.
WASHINGTON COUNTY OREGON
SCALE 1"=400'

FOR ASSESSMENT PURPOSES ONLY
DO NOT RELY ON FOR ANY OTHER USE

Legend:
+ Well location
■ irrigated land
Primary 4 acres



Number of acres per quarter/quarter
Approximately 2 acres in NWNE 1/4 1/4
Approximately 2 acres in NE-NW 1/4 1/4

Well Location:
From the NE corner of section 12, 1194'
south of and 2714' West of the NE
corner of section 12.

RECEIVED
APR 27 2022
OWRD

RECEIVED
MAY 11 2022

OWRD

NORTH PLAINS
IN 3 12