

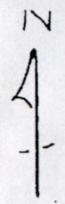
**WORK COPY**

*ARRRox*  
*SCALE*

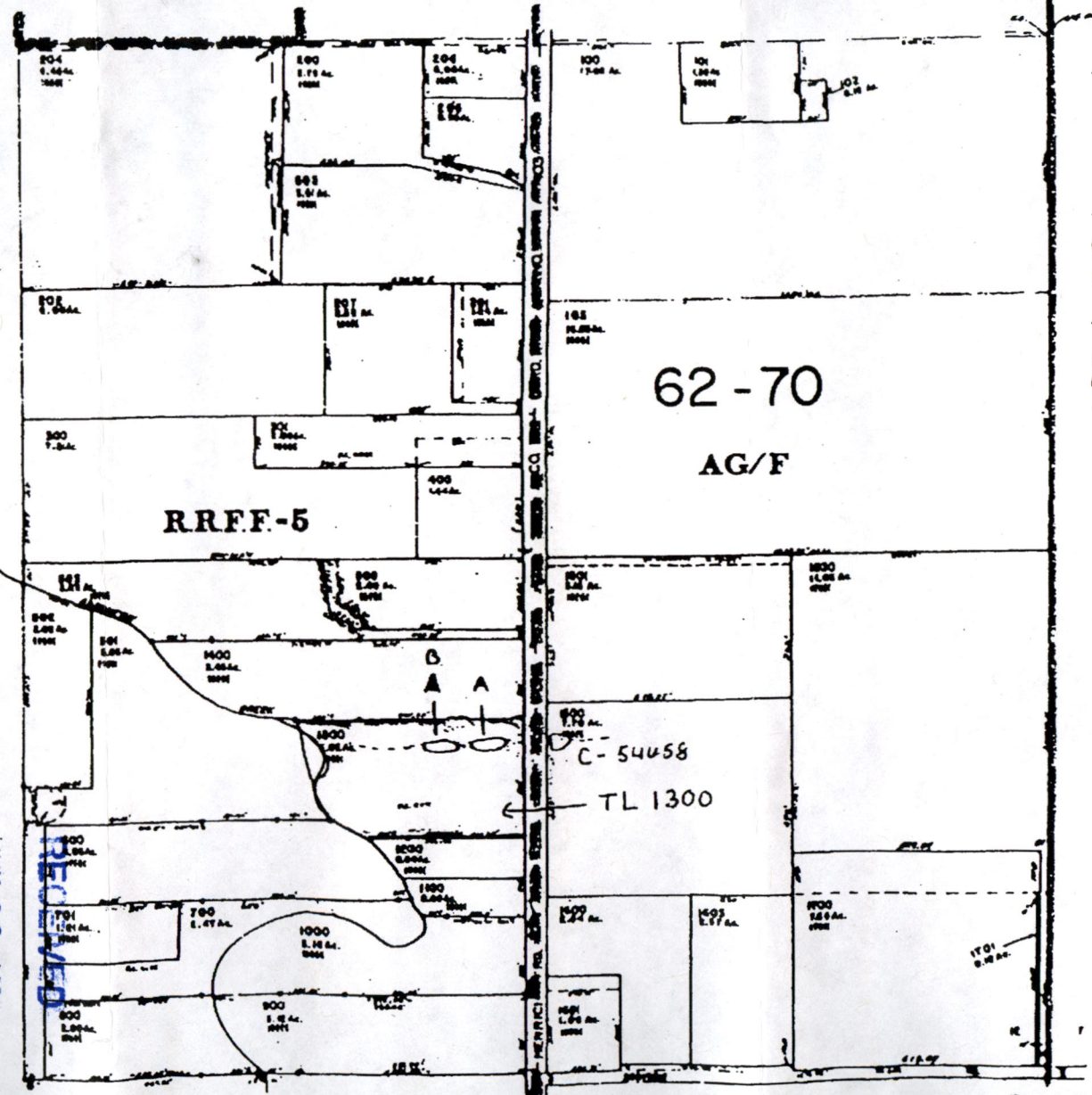
1" = 400 FEET

RECEIVED  
NOV 02 2004  
WATER RESOURCES DEPT  
SALEM, OREGON

SE 1/4 SEC 12 T3S R2E.WM.  
CLACKAMAS COUNTY



This map was prepared for assessment purposes only.



**OWRD**

JUN 23 2022

Pond A - Dam Loc:  
835' N and 1145' E  
Pond B - Dam Loc:  
835' N and 1035' E  
SW corner of the SE 1/4  
3 S, 2E, Sec 12

TL 1300 SEC 12 DC  
T 3S R2E W.M.  
1" = 400'  
REVISED TO  
1" = 400 FEET