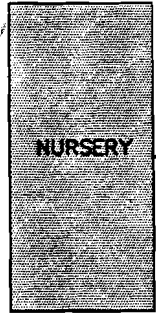


Application No. R 73828  
 Permit No. R12067



SE 1/4 of the  
 NW 1/4 Section 31  
 10.0 Acres Total  
 10.0 Acres Irrigated

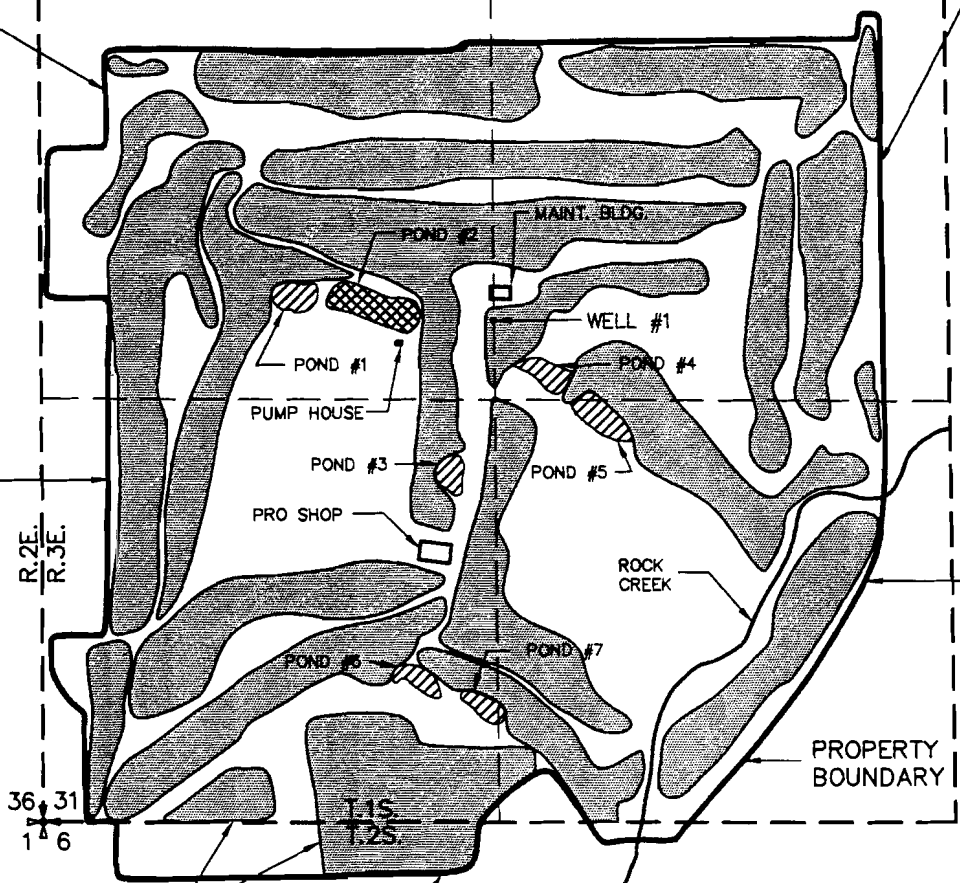
NW 1/4 of the  
 SW 1/4 Section 31  
 32.3 Acres Total  
 18.1 Acres Irrigated

NE 1/4 of the  
 SW 1/4 Section 31  
 31.3 Acres Total  
 16.6 Acres Irrigated

SW 1/4 of the  
 SW 1/4 Section 31  
 38.8 Acres Total  
 20.6 Acres Irrigated

R.2E.  
 R.3E.

SE 1/4 of the  
 SW 1/4 Section 31  
 30.4 Acres Total  
 11.9 Acres Irrigated



36 31  
 1 6

NURSERY  
 NW 1/4 of the  
 NW 1/4 Section 6  
 4.3 Acres Total  
 1.8 Acres Irrigated

**SURFACE WATER APPLICATION**

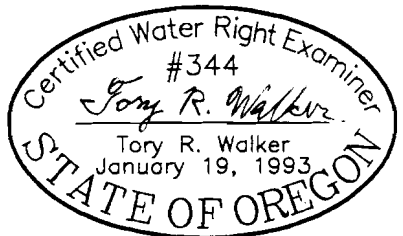
PREPARED BY TORY R. WALKER, CWRE

WELL #1 - LOCATED 1570 FEET NORTH AND 1410 FEET EAST OF THE  
 SOUTHWEST CORNER OF SECTION 31 T.3E. W.M. CLACKAMAS  
 COUNTY, OREGON.

PREPARATION OF THIS MAP WAS FOR THE PURPOSE OF  
 IDENTIFYING THE LOCATION OF THE WATER RIGHTS ONLY  
 AND HAS NO INTENT TO PROVIDE DIMENSIONS OR LOCATION  
 OF PROPERTY OWNERSHIP LINES.



SCALE: 1" = 600'



DATE	12\8\93
PROJECT NO.	495\101

**DAVID J. NEWTON**  
 ASSOCIATES INCORPORATED  
 CIVIL & GEOLOGICAL ENGINEERING  
 1201 S.W. 12TH AVE., SUITE 400  
 PORTLAND, ORE. 97205 • 228-7718

Application For Permit #  
 In the name of:  
**PLEASANT VALLEY GOLF CLUB**  
 George F. Beall, Ownership

FIGURE  
 1