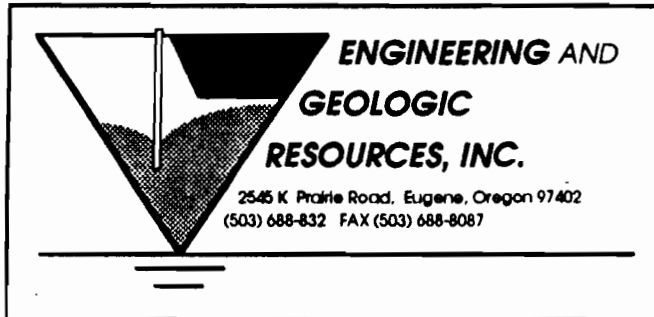


RECEIVED

JAN - 8 1996

WATER RESOURCES DEPT.  
SALEM, OREGON

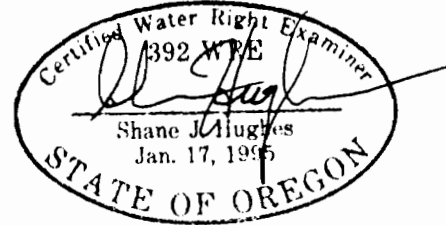
APPLICATION: R 73961  
PERMIT: R12087



### APPLICATION WATER RIGHT MAP

TL 701, SEC. 1, T20S, R5W, W.M. AND  
TL 801, SEC. 2, T20S, R5W, W.M.  
EUGENE, LANE COUNTY, OREGON

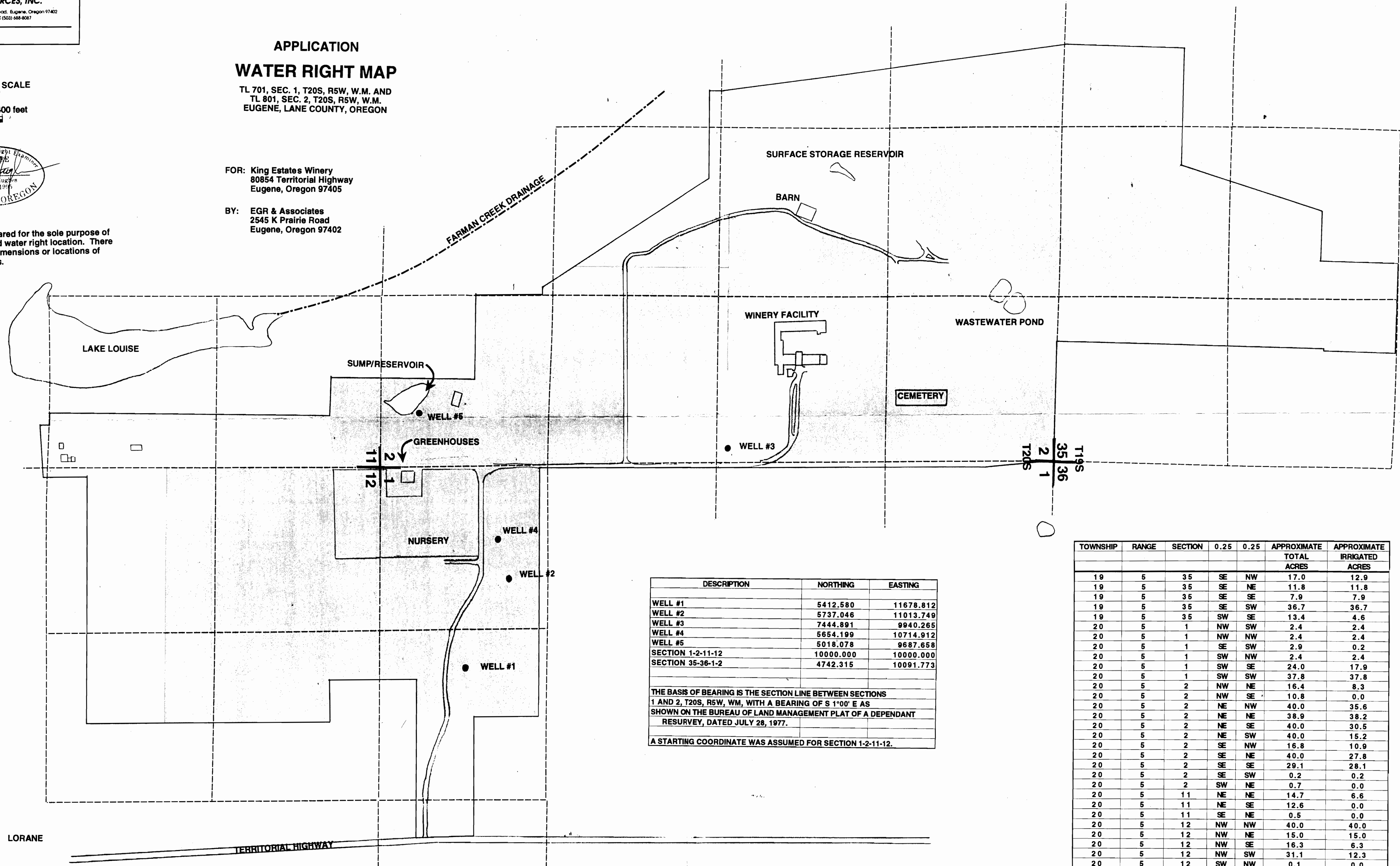
APPROXIMATE SCALE  
1" = 400'



This map has been prepared for the sole purpose of identifying the requested water right location. There is no intent to provide dimensions or locations of property ownership lines.

FOR: King Estates Winery  
80854 Territorial Highway  
Eugene, Oregon 97405

BY: EGR & Associates  
2545 K Prairie Road  
Eugene, Oregon 97402



DESCRIPTION	NORTHING	EASTING
WELL #1	5412.580	11678.812
WELL #2	5737.046	11013.749
WELL #3	7444.891	9940.265
WELL #4	5654.199	10714.912
WELL #5	5018.078	9687.658
SECTION 1-2-11-12	10000.000	10000.000
SECTION 35-36-1-2	4742.315	10091.773

THE BASIS OF BEARING IS THE SECTION LINE BETWEEN SECTIONS 1 AND 2, T20S, R5W, WM, WITH A BEARING OF S 1°00' E AS SHOWN ON THE BUREAU OF LAND MANAGEMENT PLAT OF A DEPENDANT RESURVEY, DATED JULY 28, 1977.

A STARTING COORDINATE WAS ASSUMED FOR SECTION 1-2-11-12.

TOWNSHIP	RANGE	SECTION	0.25	0.25	APPROXIMATE TOTAL ACRES	APPROXIMATE IRRIGATED ACRES
19	5	35	SE	NW	17.0	12.9
19	5	35	SE	NE	11.8	11.8
19	5	35	SE	SE	7.9	7.9
19	5	35	SE	SW	36.7	36.7
19	5	35	SW	SE	13.4	4.6
20	5	1	NW	SW	2.4	2.4
20	5	1	NW	NW	2.4	2.4
20	5	1	SE	SW	2.9	0.2
20	5	1	SW	NW	2.4	2.4
20	5	1	SW	SE	24.0	17.9
20	5	1	SW	SW	37.8	37.8
20	5	2	NW	NE	16.4	8.3
20	5	2	NW	SE	10.8	0.0
20	5	2	NE	NW	40.0	35.6
20	5	2	NE	NE	38.9	38.2
20	5	2	NE	SE	40.0	30.5
20	5	2	NE	SW	40.0	15.2
20	5	2	SE	NW	16.8	10.9
20	5	2	SE	NE	40.0	27.8
20	5	2	SE	SE	29.1	28.1
20	5	2	SE	SW	0.2	0.2
20	5	2	SW	NE	0.7	0.0
20	5	11	NE	NE	14.7	6.6
20	5	11	NE	SE	12.6	0.0
20	5	11	SE	NE	0.5	0.0
20	5	12	NW	NW	40.0	40.0
20	5	12	NW	NE	15.0	15.0
20	5	12	NW	SE	16.3	6.3
20	5	12	NW	SW	31.1	12.3
20	5	12	SW	NW	0.1	0.0
TOTAL APPROXIMATE ACRES					561.9	412.0

LORANE