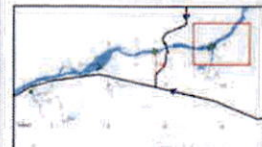


MID COLUMBIA WATER COMMISSION (MCWC)

PERMIT PLACE OF USE 2022



- Legend
- POINT OF DIVERSIONS (PODs)
 - EXISTING INFRASTRUCTURE
 - - - Proposed Pipeline
 - PROPOSED PLACE OF USE (POUs)
 - TAX LOTS
 - GW, IRRIGATION
 - GW, OTHERS
 - SW, SUPPLEMENTAL IRRIGATION
 - SW, IRRIGATION
 - SW, MULTIPLE INSTREAM USES
 - SW, SUPPLEMENTAL IRRIGATION
 - WATER BODIES

POINT OF DIVERSIONS (PODs)

POD A: SW 25E, SEC 17N, T. 2N, R. 30E, LOT 1. POD LOCATED 130 FEET SOUTH, 290 FEET WEST FROM THE NE CORNER OF SECTION 2.

POD B: SW 25E, SECTION 2, NE 1/4 LOT 3. POD LOCATED 150 FEET SOUTH, 390 FEET WEST FROM THE NE CORNER OF SECTION 3.

POD C: SW 25E, SECTION 3E, SW 1/4 LOT 3. POD LOCATED 80 FEET NORTH, 280 FEET WEST FROM THE SE CORNER OF SECTION 3E.

POD D: SW 25E, SECTION 1E, SW 1/4 LOT 4. POD LOCATED 280 FEET NORTH, 130 FEET EAST FROM THE SW CORNER OF SECTION 1E.

POD E: SW 36E, SECTION 8, SW 1/4 POD LOCATED 930 FEET NORTH, 130 FEET EAST FROM THE SW CORNER OF SECTION 8.

POD F: SW 36E, SECTION 8, SW 1/4 POD LOCATED 2930 FEET NORTH, 130 FEET EAST FROM THE SW CORNER OF SECTION 8.

POD G: SW 36E, SECTION 8, SW 1/4 POD LOCATED 3880 FEET NORTH, 70 FEET EAST FROM THE SW CORNER OF SECTION 8.

POD H: SW 36E, SECTION 2, SE 1/4 POD LOCATED 440 FEET NORTH, 1580 FEET EAST FROM THE SW CORNER OF SECTION 2.

POD I: SW 36E, SECTION 8, SW 1/4 POD LOCATED 2930 FEET NORTH, 130 FEET EAST FROM THE SW CORNER OF SECTION 8.

POD J: SW 25E, SECTION 1E, SW 1/4 POD LOCATED 2400 FEET NORTH, 330 FEET EAST FROM THE SW CORNER OF SECTION 1E.

POD K: SW 25E, SECTION 1E, SW 1/4 POD LOCATED 2400 FEET NORTH, 330 FEET EAST FROM THE SW CORNER OF SECTION 1E.

POD L: SW 25E, SECTION 1E, SW 1/4 POD LOCATED 2400 FEET NORTH, 330 FEET EAST FROM THE SW CORNER OF SECTION 1E.

POD M: SW 25E, SECTION 1E, SW 1/4 POD LOCATED 2400 FEET NORTH, 330 FEET EAST FROM THE SW CORNER OF SECTION 1E.

POD N: SW 25E, SECTION 1E, SW 1/4 POD LOCATED 2400 FEET NORTH, 330 FEET EAST FROM THE SW CORNER OF SECTION 1E.

Notes: GW = Groundwater, SW = Surface Water

Prepared: OR State Plane North
 Date: 08/20/2021
 Scale: North: NAD83, UTM Zone 12N, UTM
 The map was prepared for the purpose of planning the location of water rights, wells and is not intended to provide legal information or provide personal liability.



MAP 11 OF 11

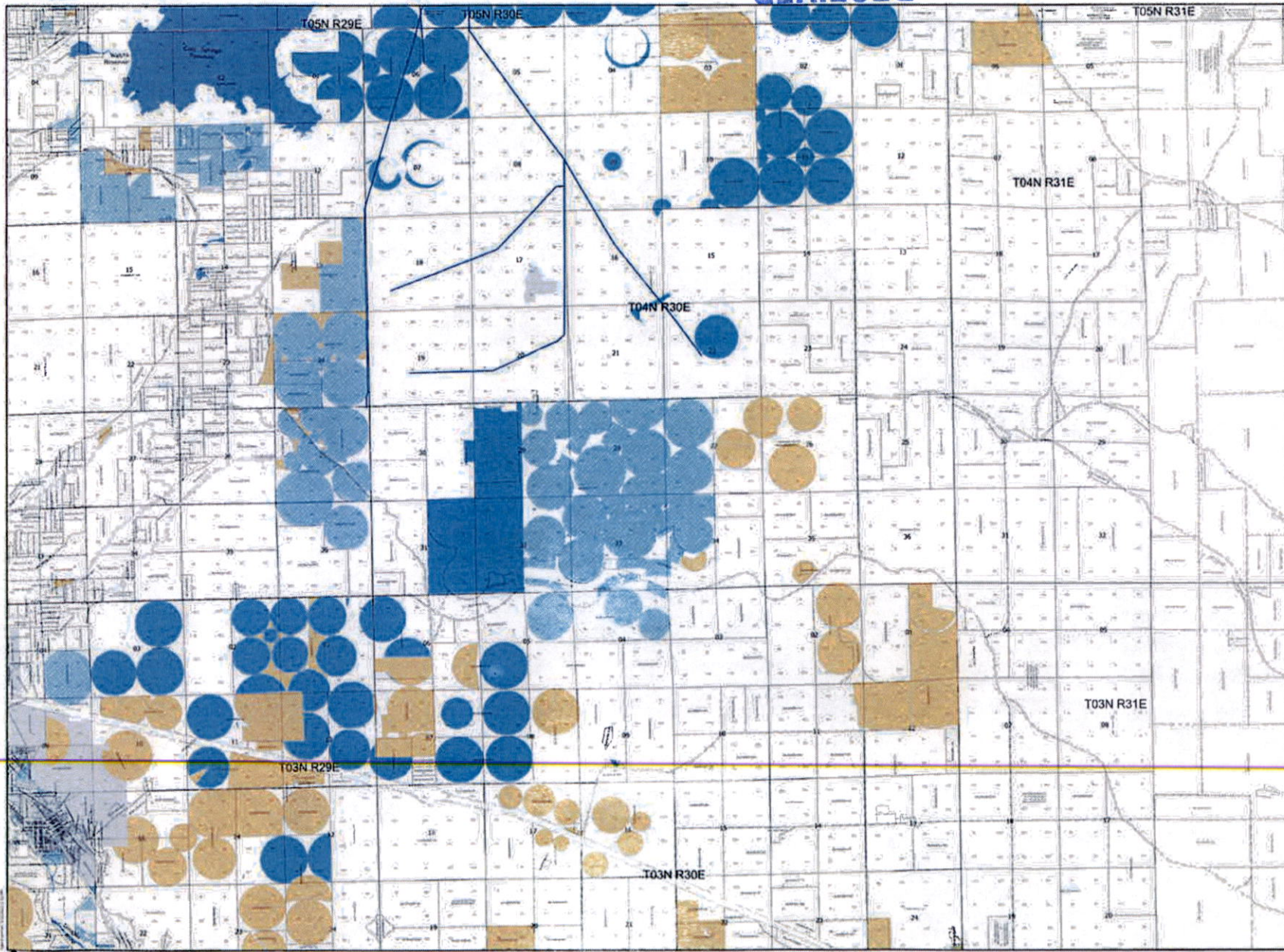
1 inch equals 0.25 miles
 IRZ ENGINEERING & CONSULTING

RECEIVED

AUG 12 2022

OWRD

RECEIVED
 AUG 12 2022
 OWRD



MID COLUMBIA WATER COMMISSION (MCWC)

PERMIT PLACE OF USE 2022



- Legend**
- POINT OF DIVERSIONS (PODs)
 - EXISTING INFRASTRUCTURE
 - Proposed Pipeline
 - PROPOSED PLACE OF USE (POUs)
 - TAX LOTS
 - GW, AGRICULTURE USES
 - GW, IRRIGATION
 - GW, OTHERS
 - GW, SUPPLEMENTAL IRRIGATION
 - SW, IRRIGATION (LIVESTOCK AND DOMESTIC)
 - SW, SUPPLEMENTAL IRRIGATION
 - WATER BODIES

POINTS OF DIVERSION (PODs)

POD A: 40' 23" SECTION 2, 1/4 NW 1/4 LOT 7, PUBLISHED 130 FEET NORTH, 2990 FEET WEST FROM THE NW CORNER OF SECTION 2

POD B: 40' 23" SECTION 2, 1/4 NW 1/4 PUBLISHED 150 FEET NORTH, 2965 FEET WEST FROM THE NW CORNER OF SECTION 2

POD C: 54' 25" SECTION 25, SW 1/4 LOT 7, PUBLISHED 80 FEET NORTH, 2480 FEET WEST FROM THE NW CORNER OF SECTION 25

POD D: 54' 25" SECTION 14, NW 1/4 LOT 4, PUBLISHED 2400 FEET NORTH, 2545 FEET EAST FROM THE SW CORNER OF SECTION 14

POD E: 54' 25" SECTION 13, NW 1/4 PUBLISHED 3100 FEET NORTH, 3530 FEET WEST FROM THE SW CORNER OF SECTION 13

POD F: 54' 25" SECTION 8, SW 1/4 PUBLISHED 3900 FEET NORTH, 130 FEET EAST FROM THE SW CORNER OF SECTION 8

POD G: 54' 25" SECTION 8, SW 1/4 PUBLISHED 3900 FEET NORTH, 130 FEET EAST FROM THE SW CORNER OF SECTION 8

POD H: 54' 25" SECTION 8, SW 1/4 PUBLISHED 460 FEET NORTH, 1080 FEET EAST FROM THE SW CORNER OF SECTION 8

POD I: 54' 25" SECTION 7, SW 1/4 PUBLISHED 460 FEET NORTH, 1080 FEET EAST FROM THE SW CORNER OF SECTION 7

POD J: 54' 25" SECTION 8, SW 1/4 PUBLISHED 280 FEET NORTH, 130 FEET EAST FROM THE SW CORNER OF SECTION 8

POD K: 54' 25" SECTION 11, NW 1/4 PUBLISHED 1400 FEET NORTH, 130 FEET EAST FROM THE SW CORNER OF SECTION 11

POD L: 54' 25" SECTION 11, NW 1/4 PUBLISHED 1400 FEET NORTH, 130 FEET EAST FROM THE SW CORNER OF SECTION 11

POD M: 40' 23" SECTION 25, NW 1/4, PUBLISHED 1857 FEET NORTH, 1834 FEET WEST, FROM THE SW CORNER OF SECTION 25

Notes: GW - Groundwater; SW - Surface Water

Projection: 08N State Plane North
 Datum: NAD 83
 Date: March 2022
 Data Source: IRZ, OWRD, Thurston County, Mason County
 This map was prepared for the purpose of identifying the location of water rights only and is not intended to provide legal descriptions or property ownership lines.

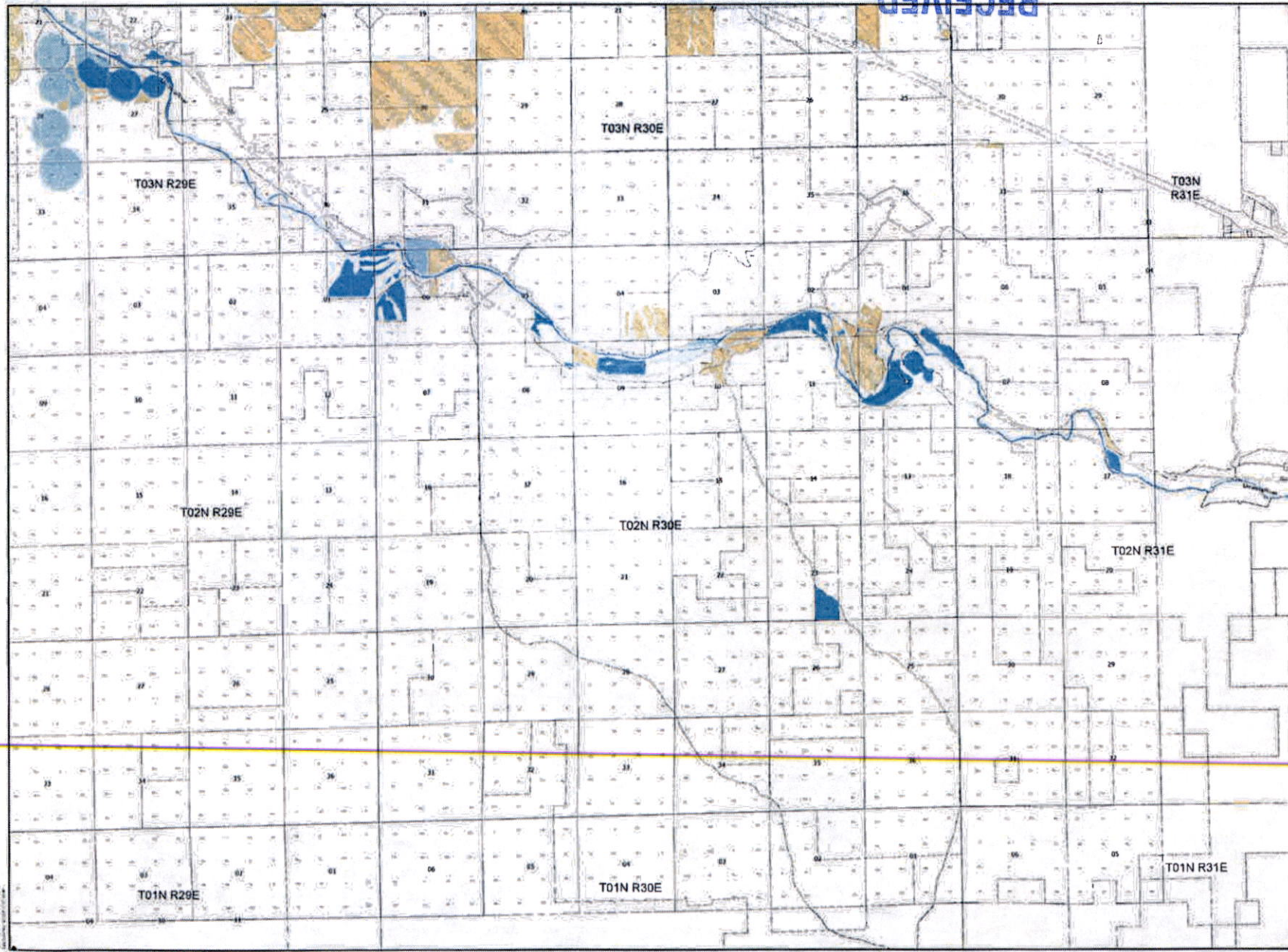
N

1 inch equals 0.25 miles

MAP 10 OF 11

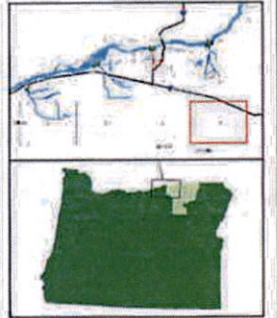
IRZ ENGINEERING & CONSULTING

RECEIVED
 AUG 12 2022
 OWRD



MID COLUMBIA WATER COMMISSION (MCWC)

PERMIT PLACE OF USE 2022



- Legend**
- POINT OF DIVERSIONS (PODs)
 - EXISTING INFRASTRUCTURE
 - Proposed Pipeline
 - PROPOSED PLACE OF USE (POUs)
 - TAX LOTS
 - Water Bodies Oregon
 - GW IRRIGATION
 - GW SUPPLEMENTAL IRRIGATION
 - SW IRRIGATION
 - SW IRRIGATION (LIVESTOCK AND DOMESTIC)
 - SW SUPPLEMENTAL IRRIGATION
 - WATER BODIES

POINT OF DIVERSIONS (PODs)

POD A: IN SEC. SECTION 8, NE 1/4, LOT 1, POD LOCATED 150 FEET NORTH, 180 FEET WEST FROM THE NE CORNER OF SECTION 3

POD B: IN SEC. SECTION 4, NE 1/4, LOT 1, POD LOCATED 150 FEET NORTH, 180 FEET WEST FROM THE NE CORNER OF SECTION 3

POD C: IN SEC. SECTION 33, SW 1/4, LOT 1, POD LOCATED 80 FEET NORTH, 180 FEET WEST FROM THE SE CORNER OF SECTION 29

POD D: IN SEC. SECTION 17, SW 1/4, LOT 1, POD LOCATED 180 FEET NORTH, 180 FEET EAST FROM THE SW CORNER OF SECTION 13

POD E: IN SEC. SECTION 8, NE 1/4, POD LOCATED 180 FEET NORTH, 180 FEET WEST FROM THE SE CORNER OF SECTION 17

POD F: IN SEC. SECTION 4, NE 1/4, POD LOCATED 180 FEET NORTH, 180 FEET EAST FROM THE SW CORNER OF SECTION 8

POD G: IN SEC. SECTION 2, SW 1/4, POD LOCATED 180 FEET NORTH, 180 FEET EAST FROM THE SW CORNER OF SECTION 8

POD H: IN SEC. SECTION 8, SW 1/4, POD LOCATED 180 FEET NORTH, 180 FEET EAST FROM THE SW CORNER OF SECTION 7

POD I: IN SEC. SECTION 8, SW 1/4, POD LOCATED 180 FEET NORTH, 180 FEET EAST FROM THE SW CORNER OF SECTION 8

POD J: IN SEC. SECTION 13, SW 1/4, POD LOCATED 180 FEET NORTH, 180 FEET EAST FROM THE SW CORNER OF SECTION 13

POD K: IN SEC. SECTION 13, SW 1/4, POD LOCATED 180 FEET NORTH, 180 FEET EAST FROM THE SW CORNER OF SECTION 13

POD L: IN SEC. SECTION 13, SW 1/4, POD LOCATED 180 FEET NORTH, 180 FEET WEST FROM THE SE CORNER OF SECTION 13

Notes: GW - Groundwater; SW - Surface Water

Prepared: DR State Plan North

Date: 06/20/22

Scale: 1" = 100'

Base: March 2022

Base Source: WDS, OWS, Umatilla County, Harney County

The map was prepared for the purpose of identifying the location of water right wells and is not intended to provide legal information or any warranty regarding them.

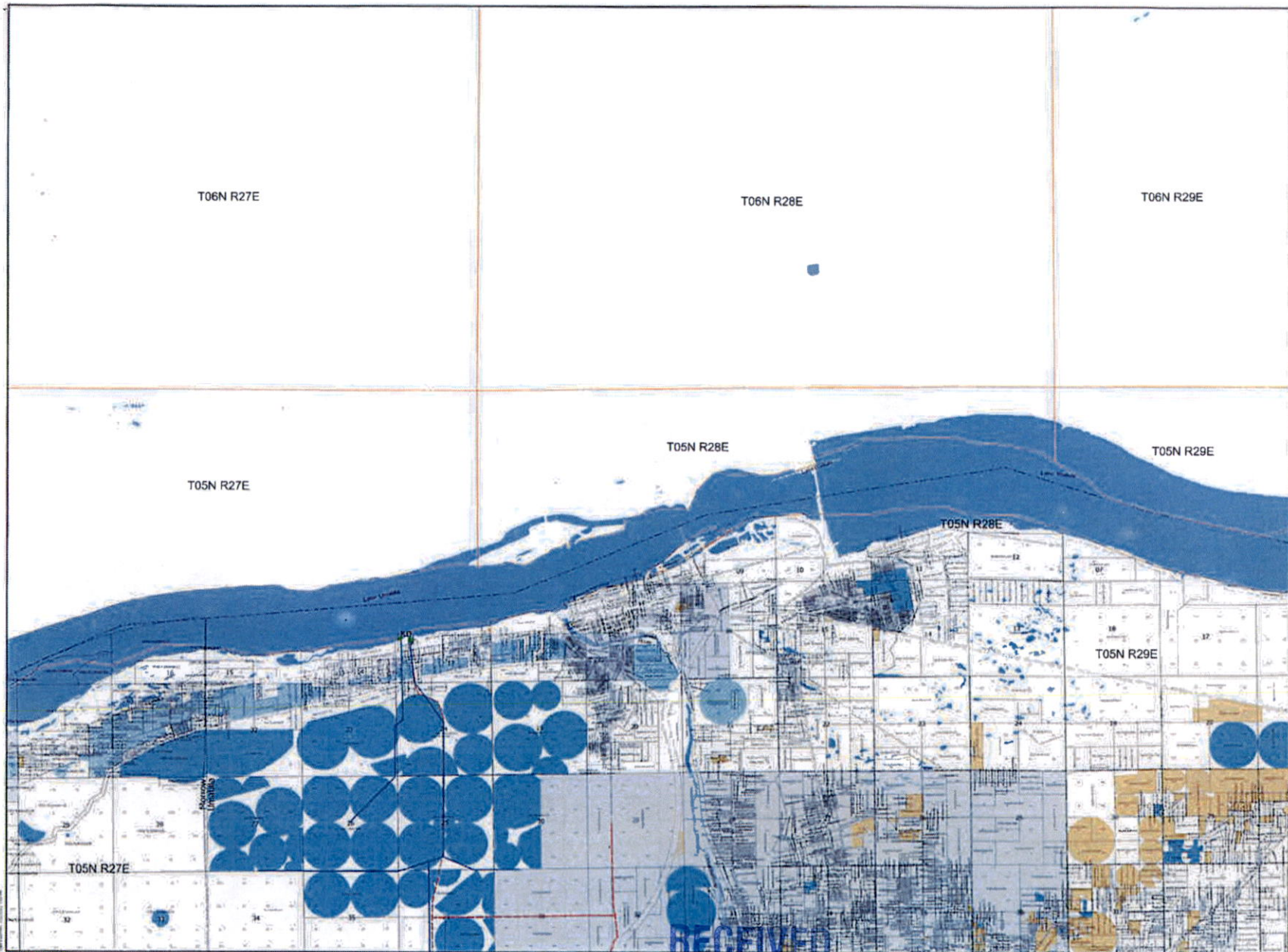
N

1" = 100'

1 inch equals 0.25 miles

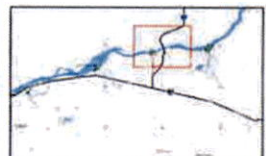
MAP 9 OF 11

IRZ ENGINEERING & CONSULTING



MID COLUMBIA WATER COMMISSION (MCWC)

PERMIT PLACE OF USE 2022



- Legend
- POINT OF DIVERSIONS (PODs)
 - EXISTING INFRASTRUCTURE
 - Proposed Pipeline
 - PROPOSED PLACE OF USE (POUs)
 - TAX LOTS
 - GW, IRRIGATION
 - GW, OTHERS
 - SW, SUPPLEMENTAL IRRIGATION
 - SW, IRRIGATION (LIVESTOCK AND DOMESTIC)
 - SW, MULTIPLE INSTREAM USES
 - SW, SUPPLEMENTAL IRRIGATION
 - WATER BODIES

POINT OF DIVERSIONS (PODs)

POD 2: SW SEC. SECTION 2, NE 1/4, LOT 7. POD LOCATED 150 FEET SOUTH, 2000 FEET WEST FROM THE NE CORNER OF SECTION 2.

POD 3: SW SEC. SECTION 2, NE 1/4, LOT 7. POD LOCATED 150 FEET SOUTH, 2000 FEET WEST FROM THE NE CORNER OF SECTION 2.

POD 4: SW SEC. SECTION 9, SW 1/4, LOT 7. POD LOCATED 80 FEET NORTH, 2100 FEET WEST FROM THE SE CORNER OF SECTION 9.

POD 5: SW SEC. SECTION 11, NW 1/4, LOT 4. POD LOCATED 2400 FEET NORTH, 300 FEET EAST FROM THE SW CORNER OF SECTION 11.

POD 6: SW SEC. SECTION 8, SW 1/4, POD LOCATED 2000 FEET NORTH, 350 FEET WEST FROM THE SW CORNER OF SECTION 8.

POD 7: SW SEC. SECTION 8, SW 1/4, POD LOCATED 2000 FEET NORTH, 350 FEET WEST FROM THE SW CORNER OF SECTION 8.

POD 8: SW SEC. SECTION 8, SW 1/4, POD LOCATED 2000 FEET NORTH, 350 FEET WEST FROM THE SW CORNER OF SECTION 8.

POD 9: SW SEC. SECTION 8, SW 1/4, POD LOCATED 2000 FEET NORTH, 350 FEET WEST FROM THE SW CORNER OF SECTION 8.

POD 10: SW SEC. SECTION 11, NW 1/4, POD LOCATED 2400 FEET NORTH, 300 FEET EAST FROM THE SW CORNER OF SECTION 11.

POD 11: SW SEC. SECTION 11, NW 1/4, POD LOCATED 2400 FEET NORTH, 300 FEET EAST FROM THE SW CORNER OF SECTION 11.

POD 12: SW SEC. SECTION 11, NW 1/4, POD LOCATED 2400 FEET NORTH, 300 FEET EAST FROM THE SW CORNER OF SECTION 11.

POD 13: SW SEC. SECTION 11, NW 1/4, POD LOCATED 2400 FEET NORTH, 300 FEET EAST FROM THE SW CORNER OF SECTION 11.

POD 14: SW SEC. SECTION 11, NW 1/4, POD LOCATED 2400 FEET NORTH, 300 FEET EAST FROM THE SW CORNER OF SECTION 11.

Notes: GW - Groundwater; SW - Surface Water

Projection: GN State Plane North

Scale: 1" = 1/25 Miles

Date: October 2022

Prepared by: IRZ Engineering & Consulting

The map was prepared for the purpose of obtaining the highest of water rights and is a preliminary or conceptual design document and does not constitute a final engineering design.

N

MAP 8 OF 11

IRZ ENGINEERING & CONSULTING

1 inch equals 0.25 miles

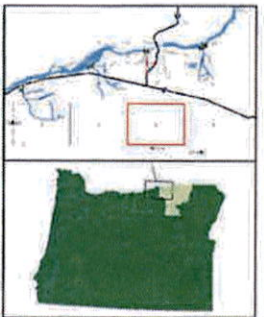
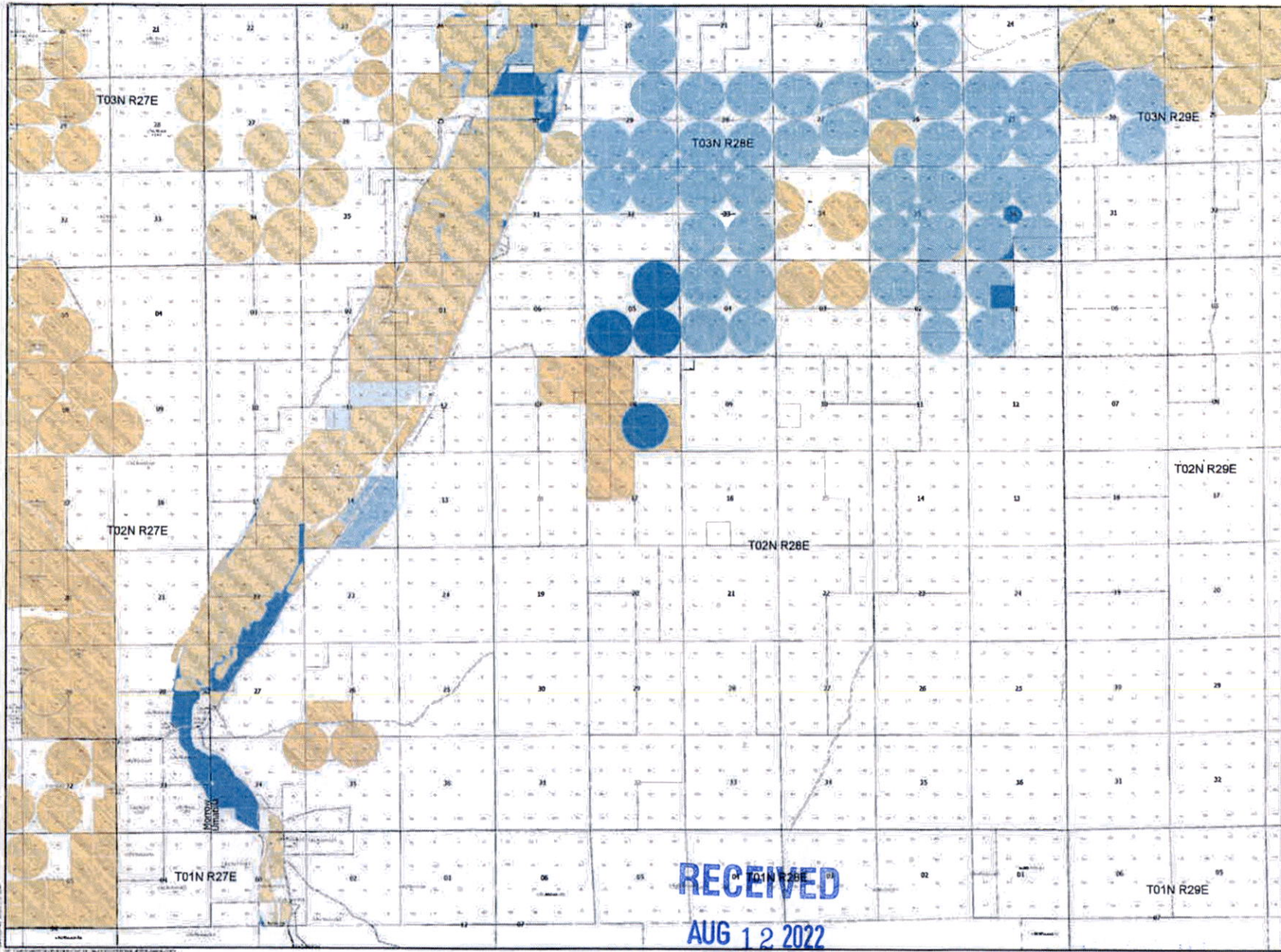
RECEIVED

AUG 12 2022

OWRD

MID COLUMBIA WATER COMMISSION (MCWC)

PERMIT PLACE OF USE 2022



- Legend**
- POINT OF DIVERSIONS (PODs)
 - EXISTING INFRASTRUCTURE
 - - - Proposed Pipeline
 - PROPOSED PLACE OF USE (POUs)
 - DW LOTS
 - GW IRRIGATION
 - GW SUPPLEMENTAL IRRIGATION
 - SW IRRIGATION
 - SW IRRIGATION (LIVESTOCK AND DOMESTIC)
 - SW SUPPLEMENTAL IRRIGATION
 - WATER BODIES

POINT OF DIVERSIONS (PODs)
 POD # 01 IN SEC. 23, NW 1/4, LIT # 1, POD LOCATED 150 FEET SOUTH, 200 FEET WEST FROM THE SW CORNER OF SECTION 23
 POD # 02 IN SEC. 24, NW 1/4, LIT # 1, POD LOCATED 150 FEET SOUTH, 200 FEET WEST FROM THE SW CORNER OF SECTION 24
 POD # 03 IN SEC. 25, SW 1/4, LIT # 1, POD LOCATED 150 FEET SOUTH, 200 FEET WEST FROM THE SW CORNER OF SECTION 25
 POD # 04 IN SEC. 26, SW 1/4, LIT # 1, POD LOCATED 150 FEET SOUTH, 200 FEET WEST FROM THE SW CORNER OF SECTION 26
 POD # 05 IN SEC. 27, SW 1/4, LIT # 1, POD LOCATED 150 FEET SOUTH, 200 FEET WEST FROM THE SW CORNER OF SECTION 27
 POD # 06 IN SEC. 28, SW 1/4, LIT # 1, POD LOCATED 150 FEET SOUTH, 200 FEET WEST FROM THE SW CORNER OF SECTION 28
 POD # 07 IN SEC. 29, SW 1/4, LIT # 1, POD LOCATED 150 FEET SOUTH, 200 FEET WEST FROM THE SW CORNER OF SECTION 29
 POD # 08 IN SEC. 30, SW 1/4, LIT # 1, POD LOCATED 150 FEET SOUTH, 200 FEET WEST FROM THE SW CORNER OF SECTION 30
 POD # 09 IN SEC. 31, SW 1/4, LIT # 1, POD LOCATED 150 FEET SOUTH, 200 FEET WEST FROM THE SW CORNER OF SECTION 31
 POD # 10 IN SEC. 32, SW 1/4, LIT # 1, POD LOCATED 150 FEET SOUTH, 200 FEET WEST FROM THE SW CORNER OF SECTION 32
 POD # 11 IN SEC. 33, SW 1/4, LIT # 1, POD LOCATED 150 FEET SOUTH, 200 FEET WEST FROM THE SW CORNER OF SECTION 33
 POD # 12 IN SEC. 34, SW 1/4, LIT # 1, POD LOCATED 150 FEET SOUTH, 200 FEET WEST FROM THE SW CORNER OF SECTION 34
 POD # 13 IN SEC. 35, SW 1/4, LIT # 1, POD LOCATED 150 FEET SOUTH, 200 FEET WEST FROM THE SW CORNER OF SECTION 35
 POD # 14 IN SEC. 36, SW 1/4, LIT # 1, POD LOCATED 150 FEET SOUTH, 200 FEET WEST FROM THE SW CORNER OF SECTION 36
 POD # 15 IN SEC. 37, SW 1/4, LIT # 1, POD LOCATED 150 FEET SOUTH, 200 FEET WEST FROM THE SW CORNER OF SECTION 37
 POD # 16 IN SEC. 38, SW 1/4, LIT # 1, POD LOCATED 150 FEET SOUTH, 200 FEET WEST FROM THE SW CORNER OF SECTION 38
 POD # 17 IN SEC. 39, SW 1/4, LIT # 1, POD LOCATED 150 FEET SOUTH, 200 FEET WEST FROM THE SW CORNER OF SECTION 39
 POD # 18 IN SEC. 40, SW 1/4, LIT # 1, POD LOCATED 150 FEET SOUTH, 200 FEET WEST FROM THE SW CORNER OF SECTION 40

Notes: GW - Groundwater; SW - Surface Water
 Prepared by: DR State Plane North
 Datum: NAD 83
 Date: March 2022
 Date Surveyed: 1985, 1988, 1995, 2000, 2005, 2010, 2015, 2020, 2021
 This map was prepared for the purpose of identifying the location of water rights help and is not intended to provide legal dimensions or property ownership lines.

N

MAP 6 OF 11

1 inch equals 0.25 miles

RECEIVED

AUG 12 2022

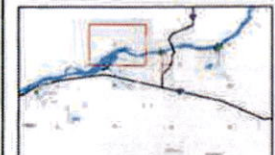
OWRD

RECEIVED
 AUG 12 2022
 OWRD



MID COLUMBIA WATER COMMISSION (MCWC)

PERMIT PLACE OF USE 2022



- Legend
- POINT OF DIVERSIONS (PODs)
 - EXISTING INFRASTRUCTURE
 - PROPOSED PLACE OF USE (POUs)
 - TAX LOTS
 - GW, IRRIGATION
 - GW, OTHERS
 - GW, SUPPLEMENTAL IRRIGATION
 - SW, IRRIGATION
 - SW, MULTIPLE INSTREAM USES
 - SW, SUPPLEMENTAL IRRIGATION
 - WATER BODIES

POINT OF DIVERSIONS (PODs)

POD A: 4N 25E SECTION 2, NE NW, LOT 7, POD LOCATED 130 FEET SOUTH 200 FEET WEST FROM THE NE CORNER OF SECTION 2

POD B: 4N 25E, SECTION 2, NE NW, LOT 7, POD LOCATED 130 FEET SOUTH, 200 FEET WEST FROM THE NE CORNER OF SECTION 2

POD C: 5N 25E, SECTION 25, SW SE, LOT 3, POD LOCATED 80 FEET NORTH, 200 FEET WEST FROM THE SE CORNER OF SECTION 25

POD D: 5N 25E, SECTION 13, NW SW, LOT 4, POD LOCATED 200 FEET NORTH, 300 FEET EAST FROM THE SW CORNER OF SECTION 13

POD E: 5N 25E, SECTION 8, NE NW, POD LOCATED 100 FEET NORTH, 350 FEET WEST FROM THE SE CORNER OF SECTION 13

POD F: 5N 25E, SECTION 8, SW NW, POD LOCATED 200 FEET NORTH, 130 FEET EAST FROM THE SW CORNER OF SECTION 8

POD G: 5N 25E, SECTION 8, SW NW, POD LOCATED 200 FEET NORTH, 20 FEET EAST FROM THE SW CORNER OF SECTION 8

POD H: 5N 25E, SECTION 7, SE SW, POD LOCATED 100 FEET NORTH, 100 FEET EAST FROM THE SW CORNER OF SECTION 7

POD I: 5N 25E, SECTION 8, SW NW, POD LOCATED 200 FEET NORTH, 130 FEET EAST FROM THE SW CORNER OF SECTION 8

POD J: 5N 25E, SECTION 13, NW SW, POD LOCATED 200 FEET NORTH, 300 FEET EAST FROM THE SW CORNER OF SECTION 13

POD K: 5N 25E, SECTION 13, NW SW, POD LOCATED 200 FEET NORTH, 330 FEET EAST FROM THE SW CORNER OF SECTION 13

POD L: 4N 25E, SECTION 26, NW SE, POD LOCATED 100 FEET NORTH, 100 FEET WEST, FROM THE SE CORNER OF SECTION 26

Notes: GW - Groundwater; SW - Surface Water

Projection: US State Plane North

Datum: NAD 83

Date: March 2022

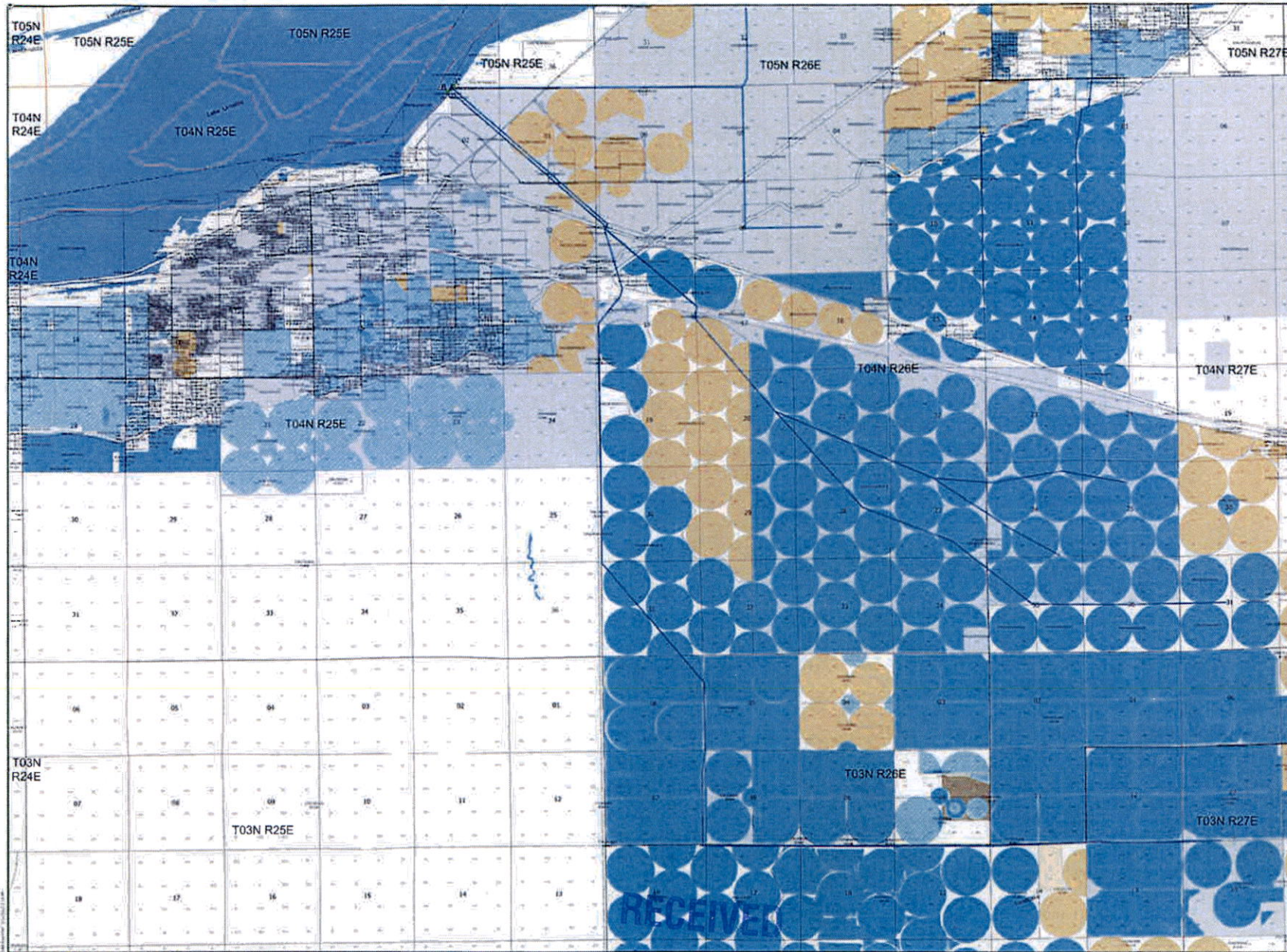
Data Sources: WRI, GWR, Yamhill County, Marion County

This map was prepared by the approval of all applicable laws and regulations of water rights only and is not intended to provide legal determinations of property ownership lines.

N

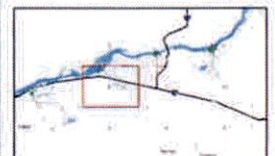
MAP 5 OF 11

1 inch equals 0.25 miles



MID COLUMBIA WATER COMMISSION (MCWC)

PERMIT PLACE OF USE
2022



- Legend**
- POINT OF DIVERSIONS (PODs)
 - EXISTING INFRASTRUCTURE
 - PROPOSED PIPELINES
 - PROPOSED PLACE OF USE (POUs)
 - GW, AGRICULTURE USES
 - GW, IRRIGATION
 - GW, OTHERS
 - GW, SUPPLEMENTAL IRRIGATION
 - SW, AGRICULTURE USES
 - SW, GROUND WATER RECHARGE
 - SW, IRRIGATION
 - SW, MULTIPLE INSTREAM USES
 - SW, SUPPLEMENTAL IRRIGATION
 - WATER BODIES

POINT OF DIVERSIONS (PODs)

POD A: SW 25E, SECTION 2, NE 1/4, LOT 7, POD LOCATED 150 FEET SOUTH, 200 FEET WEST FROM THE NE CORNER OF SECTION 2

POD B: SW 24E, SECTION 2, NE 1/4, LOT 7, POD LOCATED 150 FEET SOUTH, 200 FEET WEST FROM THE NE CORNER OF SECTION 2

POD C: SW 24E, SECTION 2, SW 1/4, LOT 7, POD LOCATED 80 FEET NORTH, 200 FEET WEST FROM THE SE CORNER OF SECTION 2

POD D: SW 27E, SECTION 1, SW 1/4, LOT 4, POD LOCATED 200 FEET NORTH, 200 FEET EAST FROM THE SW CORNER OF SECTION 1

POD E: SW 26E, SECTION 8, NE 1/4, POD LOCATED 80 FEET NORTH, 175 FEET WEST FROM THE SE CORNER OF SECTION 8

POD F: SW 26E, SECTION 8, SW 1/4, POD LOCATED 200 FEET NORTH, 70 FEET EAST FROM THE SW CORNER OF SECTION 8

POD G: SW 26E, SECTION 8, SW 1/4, POD LOCATED 250 FEET NORTH, 170 FEET EAST FROM THE SW CORNER OF SECTION 8

POD H: SW 26E, SECTION 8, SW 1/4, POD LOCATED 250 FEET NORTH, 170 FEET EAST FROM THE SW CORNER OF SECTION 8

POD I: SW 26E, SECTION 8, SW 1/4, POD LOCATED 250 FEET NORTH, 170 FEET EAST FROM THE SW CORNER OF SECTION 8

POD J: SW 26E, SECTION 8, SW 1/4, POD LOCATED 250 FEET NORTH, 170 FEET EAST FROM THE SW CORNER OF SECTION 8

POD K: SW 26E, SECTION 8, SW 1/4, POD LOCATED 250 FEET NORTH, 170 FEET EAST FROM THE SW CORNER OF SECTION 8

POD L: SW 26E, SECTION 8, SW 1/4, POD LOCATED 250 FEET NORTH, 170 FEET EAST FROM THE SW CORNER OF SECTION 8

POD M: SW 26E, SECTION 8, SW 1/4, POD LOCATED 250 FEET NORTH, 170 FEET EAST FROM THE SW CORNER OF SECTION 8

POD N: SW 26E, SECTION 8, SW 1/4, POD LOCATED 250 FEET NORTH, 170 FEET EAST FROM THE SW CORNER OF SECTION 8

POD O: SW 26E, SECTION 8, SW 1/4, POD LOCATED 250 FEET NORTH, 170 FEET EAST FROM THE SW CORNER OF SECTION 8

POD P: SW 26E, SECTION 8, SW 1/4, POD LOCATED 250 FEET NORTH, 170 FEET EAST FROM THE SW CORNER OF SECTION 8

POD Q: SW 26E, SECTION 8, SW 1/4, POD LOCATED 250 FEET NORTH, 170 FEET EAST FROM THE SW CORNER OF SECTION 8

POD R: SW 26E, SECTION 8, SW 1/4, POD LOCATED 250 FEET NORTH, 170 FEET EAST FROM THE SW CORNER OF SECTION 8

POD S: SW 26E, SECTION 8, SW 1/4, POD LOCATED 250 FEET NORTH, 170 FEET EAST FROM THE SW CORNER OF SECTION 8

POD T: SW 26E, SECTION 8, SW 1/4, POD LOCATED 250 FEET NORTH, 170 FEET EAST FROM THE SW CORNER OF SECTION 8

POD U: SW 26E, SECTION 8, SW 1/4, POD LOCATED 250 FEET NORTH, 170 FEET EAST FROM THE SW CORNER OF SECTION 8

POD V: SW 26E, SECTION 8, SW 1/4, POD LOCATED 250 FEET NORTH, 170 FEET EAST FROM THE SW CORNER OF SECTION 8

POD W: SW 26E, SECTION 8, SW 1/4, POD LOCATED 250 FEET NORTH, 170 FEET EAST FROM THE SW CORNER OF SECTION 8

POD X: SW 26E, SECTION 8, SW 1/4, POD LOCATED 250 FEET NORTH, 170 FEET EAST FROM THE SW CORNER OF SECTION 8

POD Y: SW 26E, SECTION 8, SW 1/4, POD LOCATED 250 FEET NORTH, 170 FEET EAST FROM THE SW CORNER OF SECTION 8

POD Z: SW 26E, SECTION 8, SW 1/4, POD LOCATED 250 FEET NORTH, 170 FEET EAST FROM THE SW CORNER OF SECTION 8

Notes: GW - Groundwater; SW - Surface Water

Project: OR State Plane North

Scale: 1:25,000

Date: March 2022

Prepared by: IRZ Engineering & Consulting, Inc.

The map was prepared for the purpose of identifying the location of water rights and is not intended to provide legal opinions or guarantees of accuracy.

N

MAP 4 OF 11

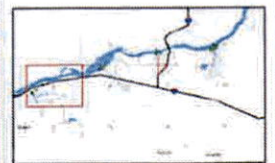
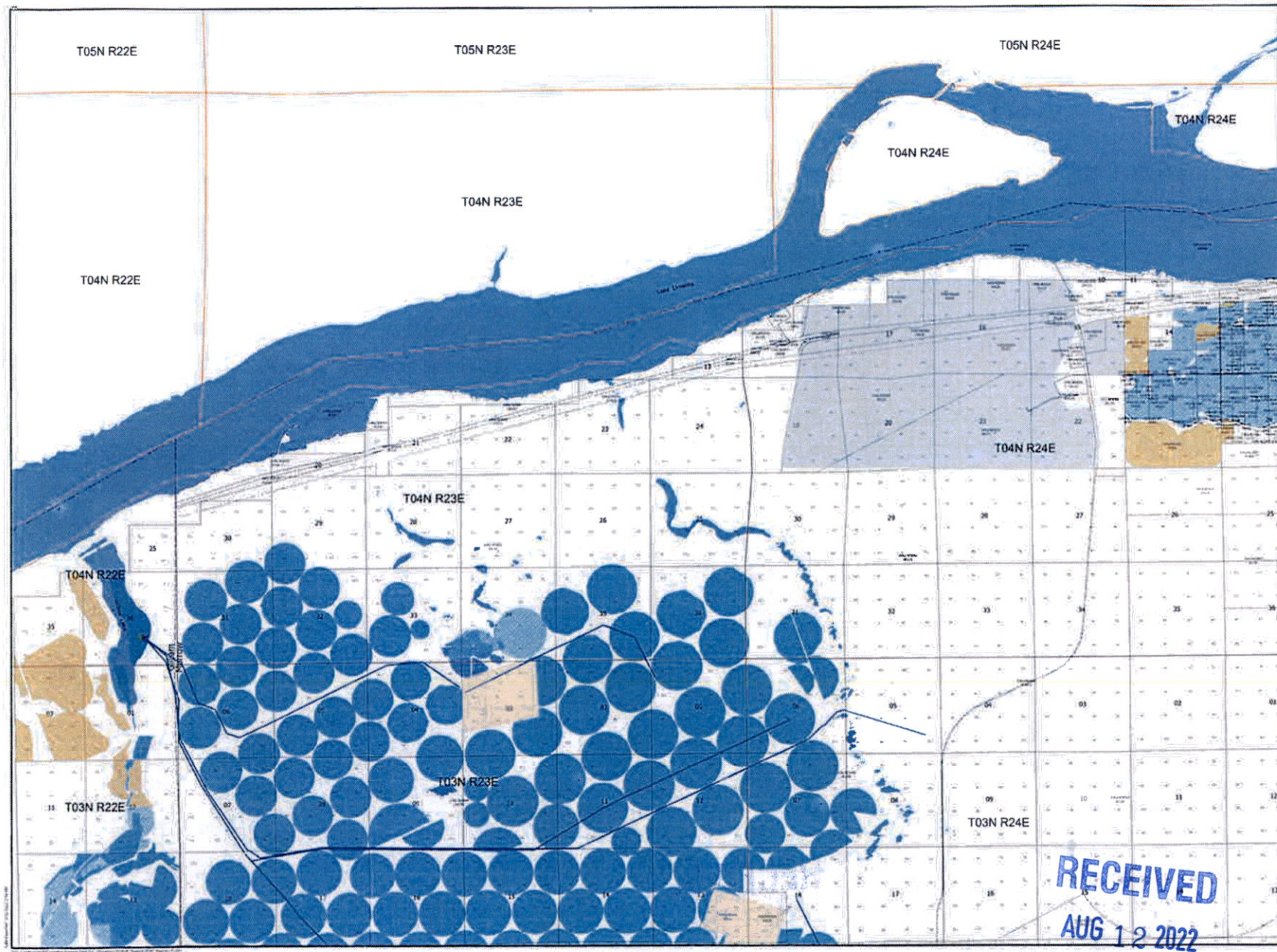
IRZ ENGINEERING & CONSULTING

1 inch equals 0.25 miles

AUG 12 2022
OWRD

MID COLUMBIA WATER COMMISSION (MCWC)

PERMIT PLACE OF USE 2022



- Legend**
- POINT OF DIVERSIONS (PODs)
 - EXISTING INFRASTRUCTURE
 - - - PROPOSED Pipeline
 - - - PROPOSED PLACE OF USE (POUs)
 - GW, AGRICULTURE USES
 - GW, IRRIGATION
 - GW, OTHERS
 - GW, SUPPLEMENTAL IRRIGATION
 - SW, IRRIGATION
 - SW, MULTIPLE INSTREAM USES
 - SW, SUPPLEMENTAL IRRIGATION
 - WATER BODIES

POINT OF DIVERSIONS (PODs)
 POD A: SW 22E, SECTION 2, NE 1/4, LOT 7. POD LOCATED 150 FEET SOUTH, 200 FEET WEST FROM THE NE CORNER OF SECTION 2.
 POD B: SW 22E, SECTION 2, NE 1/4, LOT 7. POD LOCATED 150 FEET SOUTH, 200 FEET WEST FROM THE NE CORNER OF SECTION 2.
 POD C: SW 22E, SECTION 35, SW 1/4, LOT 7. POD LOCATED 80 FEET NORTH, 200 FEET WEST FROM THE SE CORNER OF SECTION 35.
 POD D: SW 22E, SECTION 13, NW 1/4, LOT 4. POD LOCATED 240 FEET NORTH, 200 FEET EAST FROM THE SW CORNER OF SECTION 13.
 POD E: SW 22E, SECTION 8, SW 1/4, POD LOCATED 210 FEET NORTH, 550 FEET WEST FROM THE SE CORNER OF SECTION 13.
 POD F: SW 22E, SECTION 8, SW 1/4, POD LOCATED 210 FEET NORTH, 130 FEET EAST FROM THE SW CORNER OF SECTION 8.
 POD G: SW 22E, SECTION 8, SW 1/4, POD LOCATED 240 FEET NORTH, 450 FEET EAST FROM THE SW CORNER OF SECTION 8.
 POD H: SW 22E, SECTION 8, SW 1/4, POD LOCATED 240 FEET NORTH, 75 FEET EAST FROM THE SW CORNER OF SECTION 8.
 POD I: SW 22E, SECTION 2, SW 1/4, POD LOCATED 210 FEET NORTH, 120 FEET EAST FROM THE SW CORNER OF SECTION 2.
 POD J: SW 22E, SECTION 8, SW 1/4, POD LOCATED 210 FEET NORTH, 150 FEET EAST FROM THE SW CORNER OF SECTION 13.
 POD K: SW 22E, SECTION 13, SW 1/4, POD LOCATED 240 FEET NORTH, 170 FEET EAST FROM THE SW CORNER OF SECTION 13.
 POD M: SW 22E, SECTION 35, NW 1/4, POD LOCATED 165 FEET NORTH, 110 FEET WEST FROM THE SE CORNER OF SECTION 35.

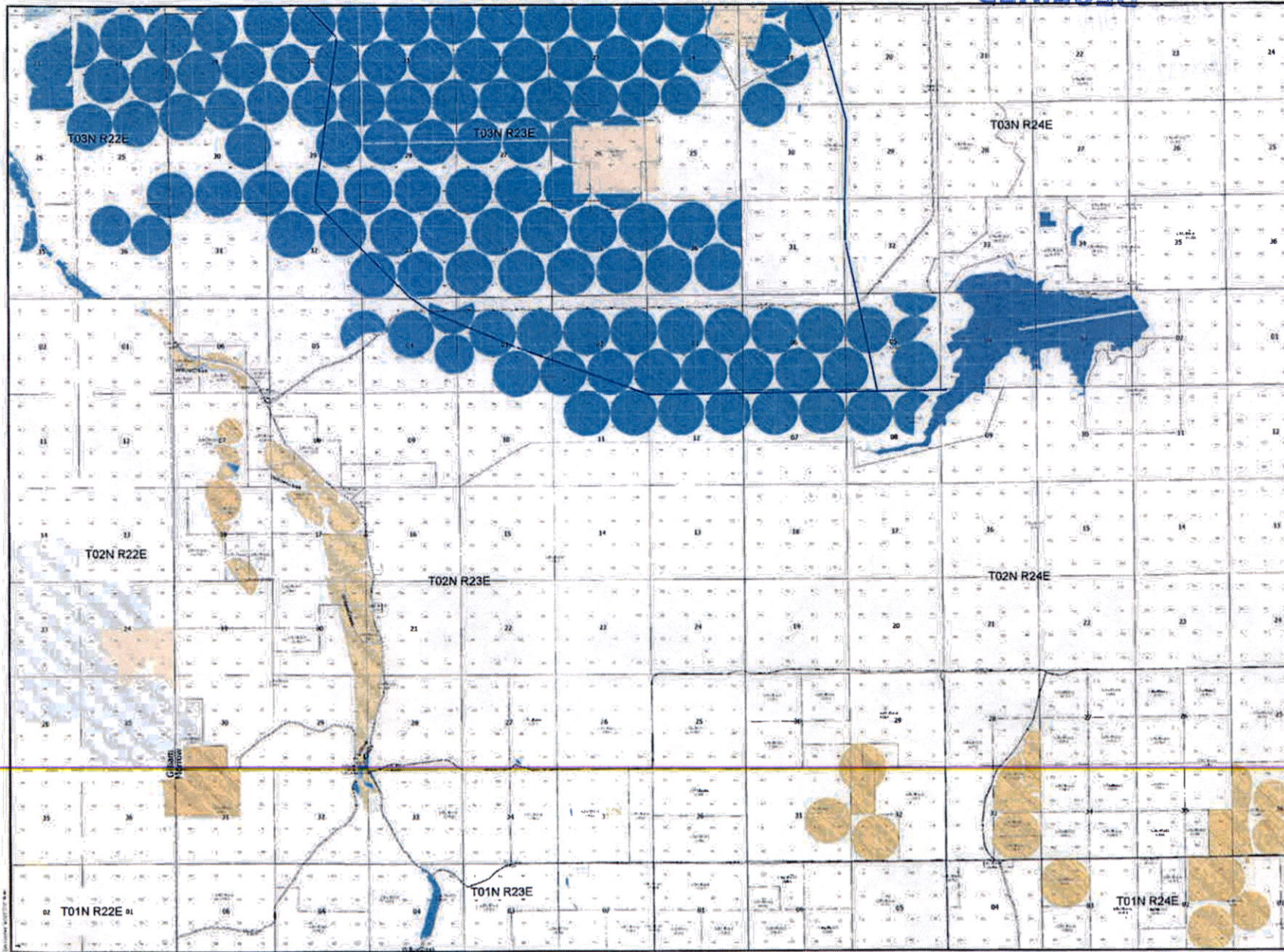
Relative: GW - Groundwater; SW - Surface Water
 Projection: US State Plane North
 Datum: NAD 1983
 Date: March 2022
 Date: Section 1, 2, 3, 4, 5, 6, 7, 8, 9, 10, 11, 12, 13, 14, 15, 16, 17, 18, 19, 20, 21, 22, 23, 24, 25, 26, 27, 28, 29, 30, 31, 32, 33, 34, 35, 36, 37, 38, 39, 40, 41, 42, 43, 44, 45, 46, 47, 48, 49, 50, 51, 52, 53, 54, 55, 56, 57, 58, 59, 60, 61, 62, 63, 64, 65, 66, 67, 68, 69, 70, 71, 72, 73, 74, 75, 76, 77, 78, 79, 80, 81, 82, 83, 84, 85, 86, 87, 88, 89, 90, 91, 92, 93, 94, 95, 96, 97, 98, 99, 100, 101, 102, 103, 104, 105, 106, 107, 108, 109, 110, 111, 112, 113, 114, 115, 116, 117, 118, 119, 120, 121, 122, 123, 124, 125, 126, 127, 128, 129, 130, 131, 132, 133, 134, 135, 136, 137, 138, 139, 140, 141, 142, 143, 144, 145, 146, 147, 148, 149, 150, 151, 152, 153, 154, 155, 156, 157, 158, 159, 160, 161, 162, 163, 164, 165, 166, 167, 168, 169, 170, 171, 172, 173, 174, 175, 176, 177, 178, 179, 180, 181, 182, 183, 184, 185, 186, 187, 188, 189, 190, 191, 192, 193, 194, 195, 196, 197, 198, 199, 200, 201, 202, 203, 204, 205, 206, 207, 208, 209, 210, 211, 212, 213, 214, 215, 216, 217, 218, 219, 220, 221, 222, 223, 224, 225, 226, 227, 228, 229, 230, 231, 232, 233, 234, 235, 236, 237, 238, 239, 240, 241, 242, 243, 244, 245, 246, 247, 248, 249, 250, 251, 252, 253, 254, 255, 256, 257, 258, 259, 260, 261, 262, 263, 264, 265, 266, 267, 268, 269, 270, 271, 272, 273, 274, 275, 276, 277, 278, 279, 280, 281, 282, 283, 284, 285, 286, 287, 288, 289, 290, 291, 292, 293, 294, 295, 296, 297, 298, 299, 300, 301, 302, 303, 304, 305, 306, 307, 308, 309, 310, 311, 312, 313, 314, 315, 316, 317, 318, 319, 320, 321, 322, 323, 324, 325, 326, 327, 328, 329, 330, 331, 332, 333, 334, 335, 336, 337, 338, 339, 340, 341, 342, 343, 344, 345, 346, 347, 348, 349, 350, 351, 352, 353, 354, 355, 356, 357, 358, 359, 360, 361, 362, 363, 364, 365, 366, 367, 368, 369, 370, 371, 372, 373, 374, 375, 376, 377, 378, 379, 380, 381, 382, 383, 384, 385, 386, 387, 388, 389, 390, 391, 392, 393, 394, 395, 396, 397, 398, 399, 400, 401, 402, 403, 404, 405, 406, 407, 408, 409, 410, 411, 412, 413, 414, 415, 416, 417, 418, 419, 420, 421, 422, 423, 424, 425, 426, 427, 428, 429, 430, 431, 432, 433, 434, 435, 436, 437, 438, 439, 440, 441, 442, 443, 444, 445, 446, 447, 448, 449, 450, 451, 452, 453, 454, 455, 456, 457, 458, 459, 460, 461, 462, 463, 464, 465, 466, 467, 468, 469, 470, 471, 472, 473, 474, 475, 476, 477, 478, 479, 480, 481, 482, 483, 484, 485, 486, 487, 488, 489, 490, 491, 492, 493, 494, 495, 496, 497, 498, 499, 500, 501, 502, 503, 504, 505, 506, 507, 508, 509, 510, 511, 512, 513, 514, 515, 516, 517, 518, 519, 520, 521, 522, 523, 524, 525, 526, 527, 528, 529, 530, 531, 532, 533, 534, 535, 536, 537, 538, 539, 540, 541, 542, 543, 544, 545, 546, 547, 548, 549, 550, 551, 552, 553, 554, 555, 556, 557, 558, 559, 560, 561, 562, 563, 564, 565, 566, 567, 568, 569, 570, 571, 572, 573, 574, 575, 576, 577, 578, 579, 580, 581, 582, 583, 584, 585, 586, 587, 588, 589, 590, 591, 592, 593, 594, 595, 596, 597, 598, 599, 600, 601, 602, 603, 604, 605, 606, 607, 608, 609, 610, 611, 612, 613, 614, 615, 616, 617, 618, 619, 620, 621, 622, 623, 624, 625, 626, 627, 628, 629, 630, 631, 632, 633, 634, 635, 636, 637, 638, 639, 640, 641, 642, 643, 644, 645, 646, 647, 648, 649, 650, 651, 652, 653, 654, 655, 656, 657, 658, 659, 660, 661, 662, 663, 664, 665, 666, 667, 668, 669, 670, 671, 672, 673, 674, 675, 676, 677, 678, 679, 680, 681, 682, 683, 684, 685, 686, 687, 688, 689, 690, 691, 692, 693, 694, 695, 696, 697, 698, 699, 700, 701, 702, 703, 704, 705, 706, 707, 708, 709, 710, 711, 712, 713, 714, 715, 716, 717, 718, 719, 720, 721, 722, 723, 724, 725, 726, 727, 728, 729, 730, 731, 732, 733, 734, 735, 736, 737, 738, 739, 740, 741, 742, 743, 744, 745, 746, 747, 748, 749, 750, 751, 752, 753, 754, 755, 756, 757, 758, 759, 760, 761, 762, 763, 764, 765, 766, 767, 768, 769, 770, 771, 772, 773, 774, 775, 776, 777, 778, 779, 780, 781, 782, 783, 784, 785, 786, 787, 788, 789, 790, 791, 792, 793, 794, 795, 796, 797, 798, 799, 800, 801, 802, 803, 804, 805, 806, 807, 808, 809, 810, 811, 812, 813, 814, 815, 816, 817, 818, 819, 820, 821, 822, 823, 824, 825, 826, 827, 828, 829, 830, 831, 832, 833, 834, 835, 836, 837, 838, 839, 840, 841, 842, 843, 844, 845, 846, 847, 848, 849, 850, 851, 852, 853, 854, 855, 856, 857, 858, 859, 860, 861, 862, 863, 864, 865, 866, 867, 868, 869, 870, 871, 872, 873, 874, 875, 876, 877, 878, 879, 880, 881, 882, 883, 884, 885, 886, 887, 888, 889, 890, 891, 892, 893, 894, 895, 896, 897, 898, 899, 900, 901, 902, 903, 904, 905, 906, 907, 908, 909, 910, 911, 912, 913, 914, 915, 916, 917, 918, 919, 920, 921, 922, 923, 924, 925, 926, 927, 928, 929, 930, 931, 932, 933, 934, 935, 936, 937, 938, 939, 940, 941, 942, 943, 944, 945, 946, 947, 948, 949, 950, 951, 952, 953, 954, 955, 956, 957, 958, 959, 960, 961, 962, 963, 964, 965, 966, 967, 968, 969, 970, 971, 972, 973, 974, 975, 976, 977, 978, 979, 980, 981, 982, 983, 984, 985, 986, 987, 988, 989, 990, 991, 992, 993, 994, 995, 996, 997, 998, 999, 1000.

RECEIVED
 AUG 12 2022
 OWRD

MAP 2 OF 11

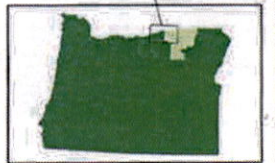
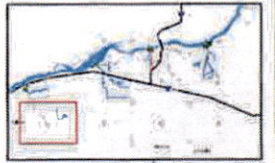
IRZ ENGINEERING & CONSULTING

RECEIVED
 Aug 12 2022
 OWRD



MID COLUMBIA WATER COMMISSION
 (MCWC)

PERMIT PLACE OF USE
 2022



- Legend
- POINT OF DIVERSIONS (PODs)
 - EXISTING INFRASTRUCTURE
 - Proposed Pipeline
 - PROPOSED PLACE OF USE (POUs)
 - TAX LOTS
 - GW AGRICULTURE USES
 - GW IRRIGATION
 - GW OTHERS
 - GW SUPPLEMENTAL IRRIGATION
 - SW IRRIGATION
 - SW IRRIGATION AND DOMESTIC
 - SW SUPPLEMENTAL IRRIGATION

POINT OF DIVERSIONS (PODs)

POD A: 30 23E, SECTION 2, NE 1/4, LOT 7. POD LOCATED 230 FEET SOUTH, 2000 FEET WEST FROM THE NE CORNER OF SECTION 2

POD B: 30 23E, SECTION 2, NE 1/4, LOT 7. POD LOCATED 230 FEET SOUTH, 2000 FEET WEST FROM THE NE CORNER OF SECTION 2

POD C: 30 23E, SECTION 3, NW 1/4, LOT 3. POD LOCATED 40 FEET NORTH, 2000 FEET WEST FROM THE SE CORNER OF SECTION 3

POD D: 30 23E, SECTION 3, NW 1/4, LOT 4. POD LOCATED 240 FEET NORTH, 230 FEET EAST FROM THE SW CORNER OF SECTION 3

POD E: 30 23E, SECTION 4, NE 1/4. POD LOCATED 230 FEET NORTH, 230 FEET WEST FROM THE SE CORNER OF SECTION 4

POD F: 30 23E, SECTION 4, NE 1/4. POD LOCATED 230 FEET NORTH, 230 FEET EAST FROM THE SW CORNER OF SECTION 4

POD G: 30 23E, SECTION 8, SW 1/4. POD LOCATED 230 FEET NORTH, 10 FEET EAST FROM THE SE CORNER OF SECTION 8

POD H: 30 23E, SECTION 8, SW 1/4. POD LOCATED 230 FEET NORTH, 10 FEET EAST FROM THE SW CORNER OF SECTION 8

POD I: 30 23E, SECTION 9, SW 1/4. POD LOCATED 230 FEET NORTH, 130 FEET EAST FROM THE SW CORNER OF SECTION 9

POD J: 30 23E, SECTION 13, NW 1/4. POD LOCATED 230 FEET NORTH, 230 FEET EAST FROM THE SW CORNER OF SECTION 13

POD K: 30 23E, SECTION 13, NW 1/4. POD LOCATED 230 FEET NORTH, 230 FEET EAST FROM THE SW CORNER OF SECTION 13

POD L: 30 23E, SECTION 16, SW 1/4. POD LOCATED 230 FEET NORTH, 230 FEET WEST FROM THE SE CORNER OF SECTION 16

Notes: GW - Groundwater; SW - Surface Water

Prepared: DS Shaw Platte North
 Date: April 2022
 Date Revised: NONE, DATED, Lincoln County, Missouri County.
 This map was prepared for the purpose of identifying the location of water rights only and is not intended to provide legal description or convey any ownership claim.

MAP 1 OF 11

IRZ ENGINEERING & CONSULTING

1 inch equals 0.25 miles

Receipt for Request for Land Use Information

Applicant name:

MID COLUMBIA WATER COMMISSION

City or County:

MORROW COUNTY

Staff contact:

STEPHEN WRECSICS

Signature:



Phone:

541.922.4624

RECEIVED

AUG 12 2022

OWRD

Attachment 2: Land Use Information Form

Note to applicant: If the Land Use Information Form cannot be completed while you wait, please have a local government representative sign the receipt at the bottom of the next page and include it with the application filed with the Water Resources Department.

RECEIVED
AUG 12 2022
OWRD