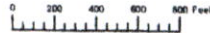


THIS MAP WAS PREPARED FOR ASSESSMENT PURPOSE ONLY



SECTION 36 T.7S. R.45E. W.M.  
BAKER COUNTY  
1" = 400'

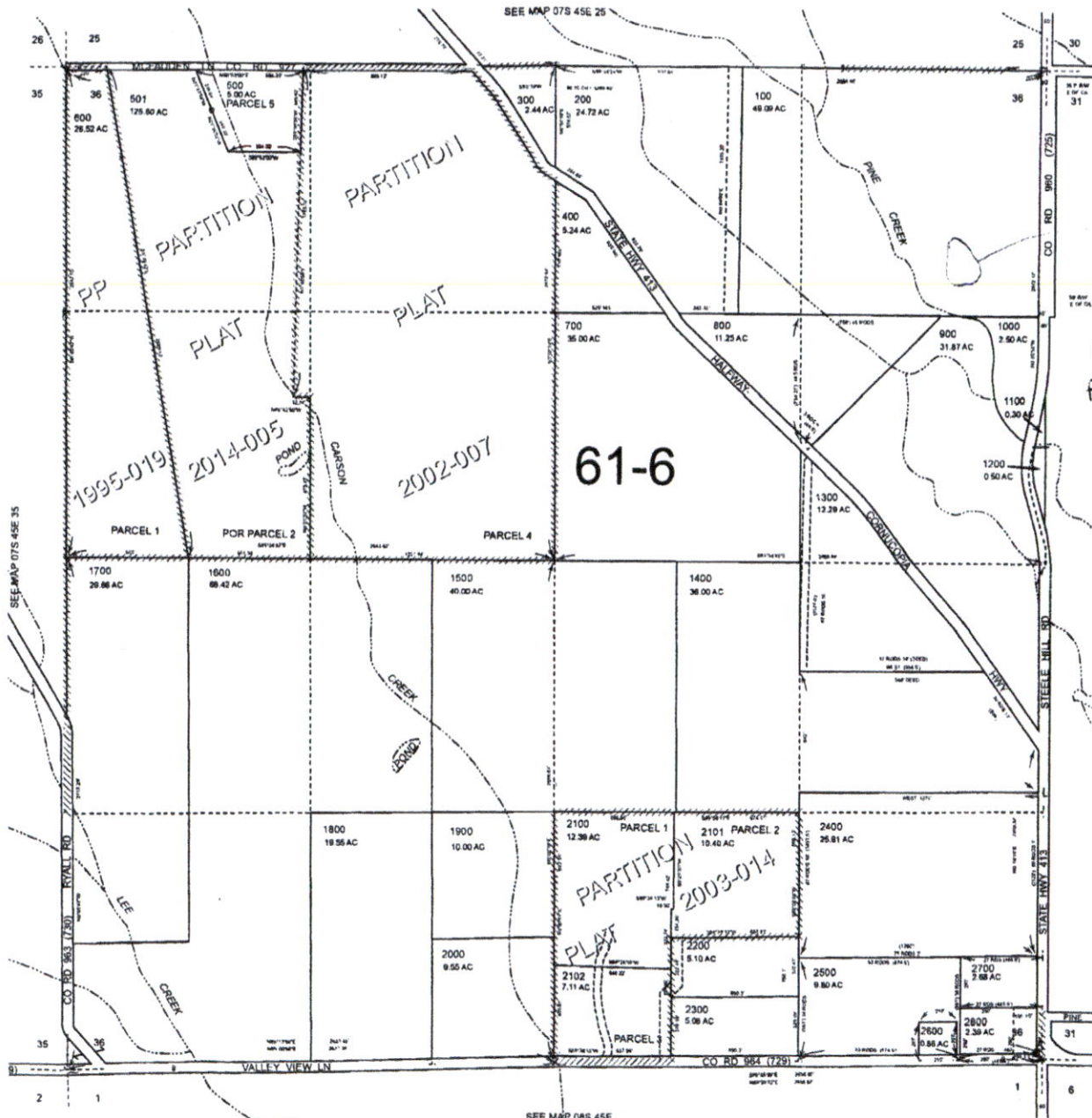
07S45E36

Cancelled  
502  
2900

RECEIVED BY OWRD

APR 29 2016

SALEM, OR



POND LOCATION  
1150' SOUTH  
AND 300' WEST  
FROM NE CORNER  
OF SECT 36  
T.7S, R.45E

OWRD

SEP 02 2022

RECEIVED

61288-2

Revised: DBJ  
09/09/2014

07S45E36