



HARNEY COMMUNITY BASED WATER PLANNING COLLABORATIVE

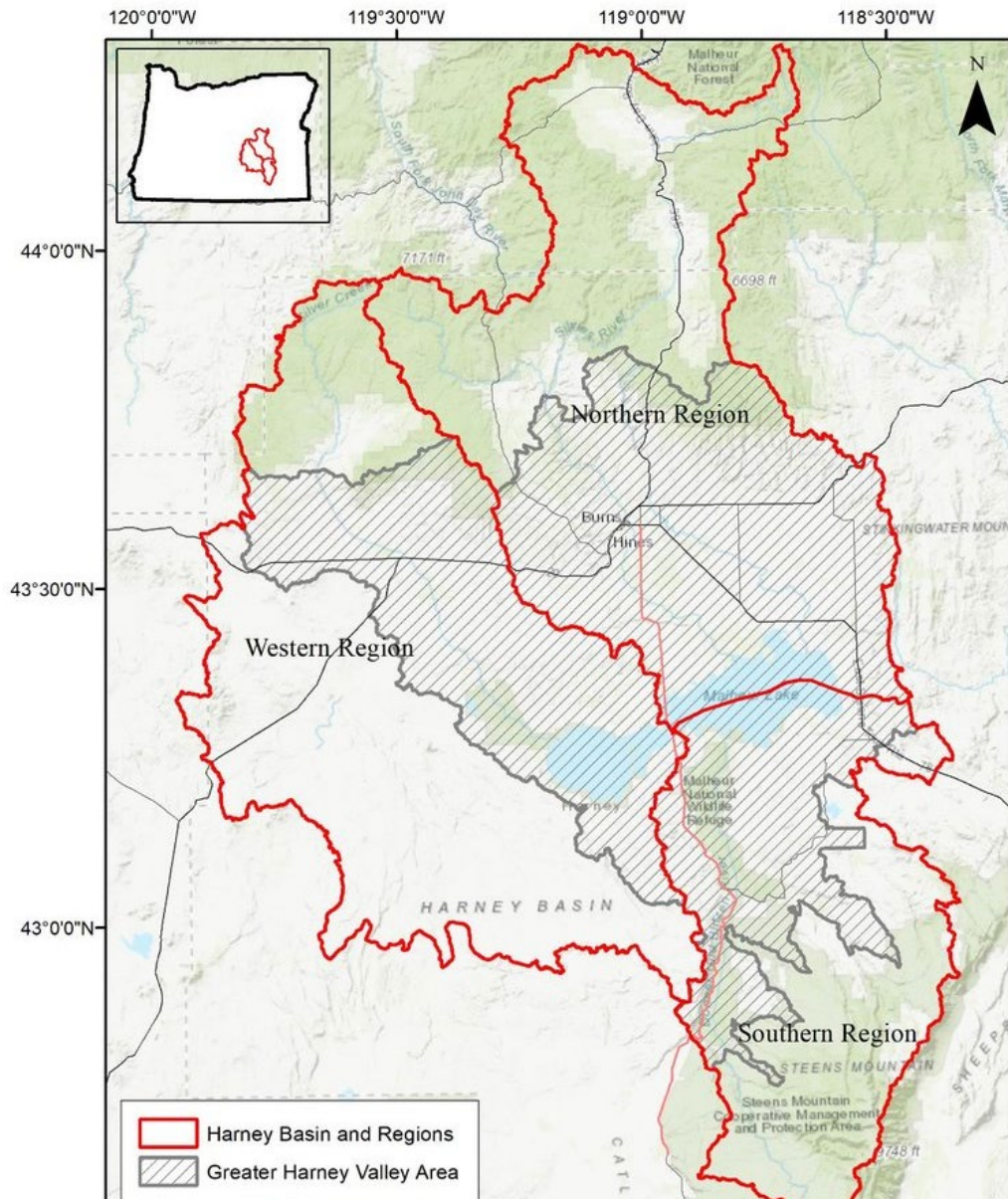
PLANNING UPDATE

Holly Mondo, Mark Owens, Brenda Smith

June 17, 2022

Roadmap

- The Harney Basin
- The Harney-CBWP Collaborative
- Process
- Major Milestones + Challenges
- Gaps and Needs
- Implications to Community
- Path Ahead

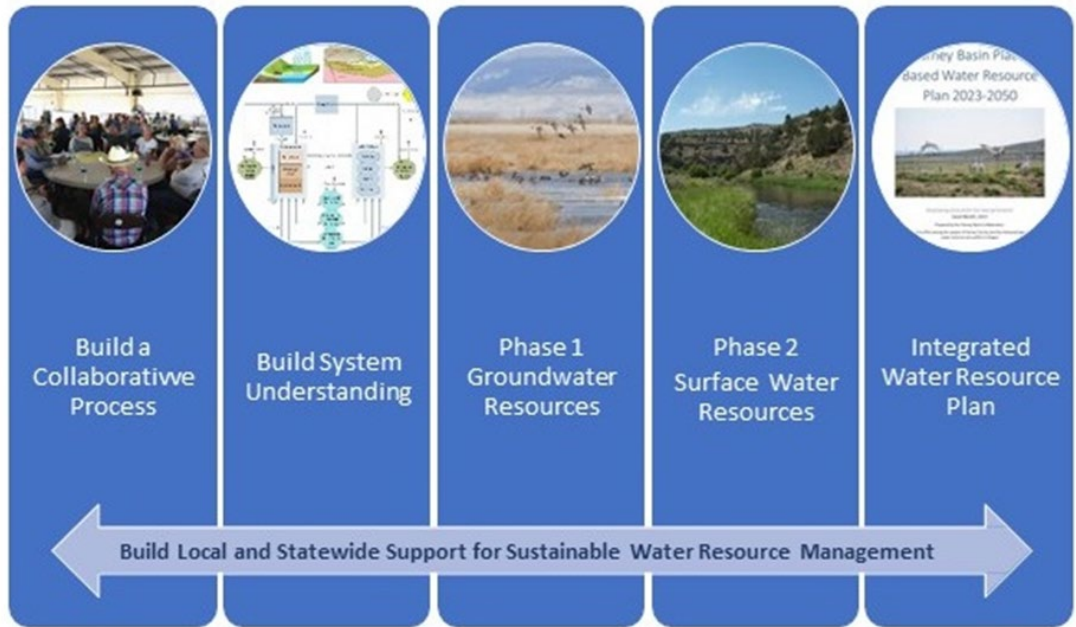


The Harney Basin

- Located in southeastern Oregon in the Northern Great Basin
- Closed basin
- GHVGAC Designation
- Malheur National Wildlife Refuge lies in the center of the basin and receives water from all the streams in the basin

The Harney- CBWP Collaborative

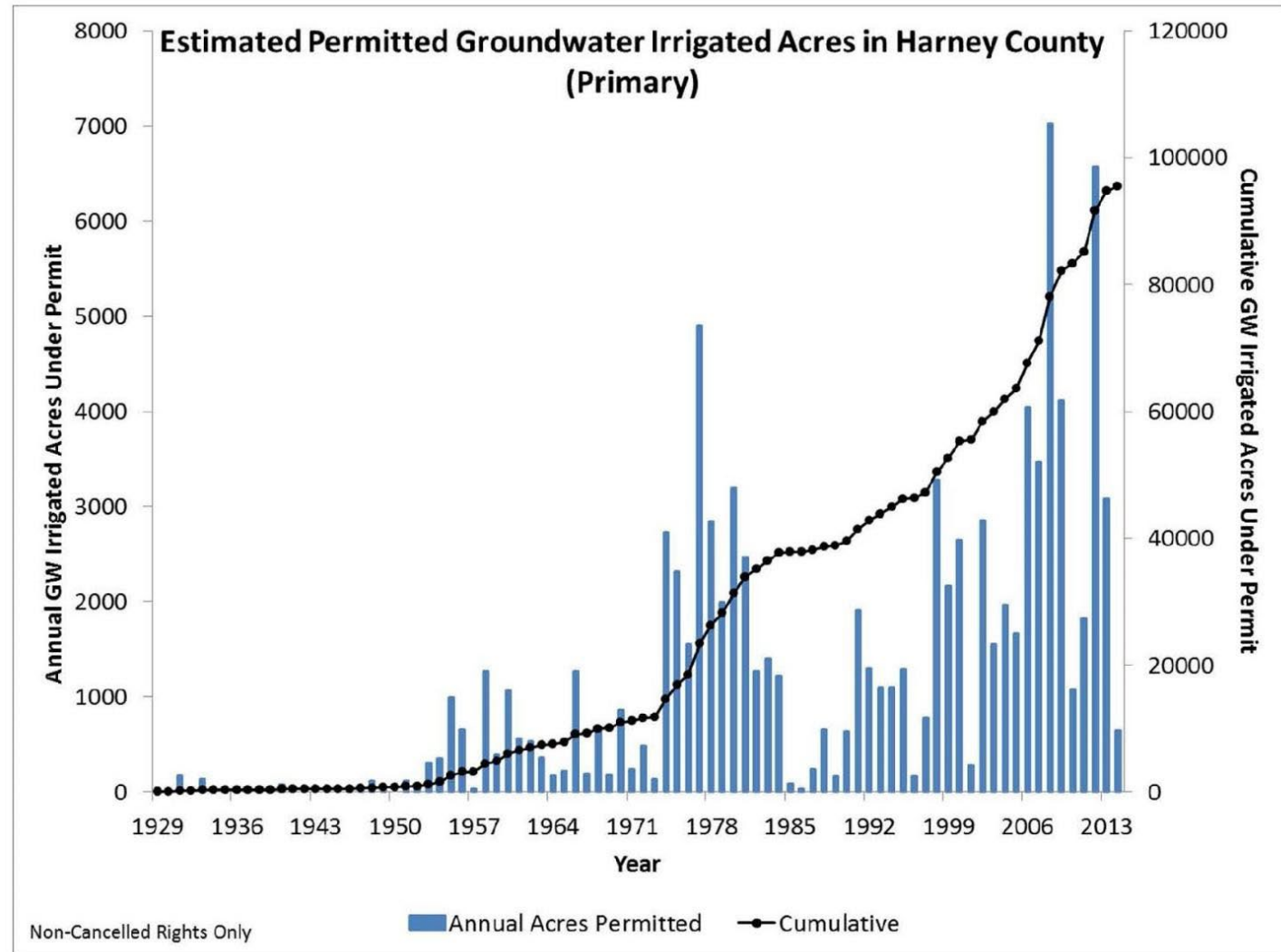
- Conveners: Harney County Court and Watershed Council
- Composed of representatives from various groups – all with a stake in water resources:
 - Local, State, Federal, Tribal Governments
 - Environmental interests
 - Business interests
 - Agricultural interests
 - Residents/landowners
 - Tribal representatives



CBWP PROCESS

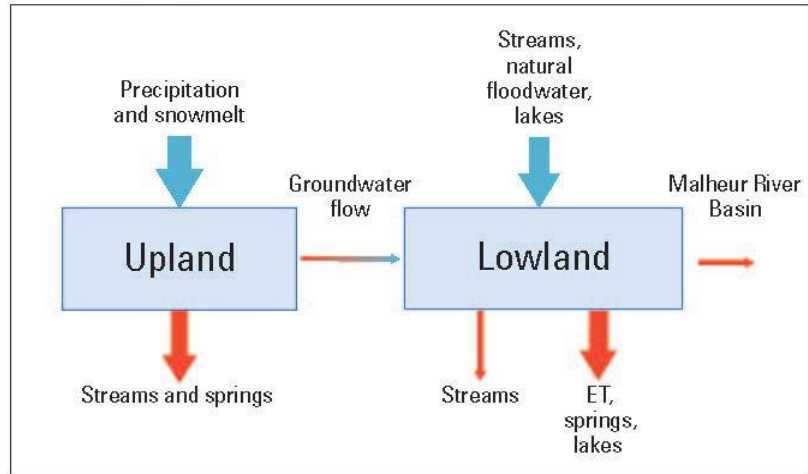
CBWP Process

- Phased approach allowed the Collaborative to focus on the over allocation of groundwater in the basin

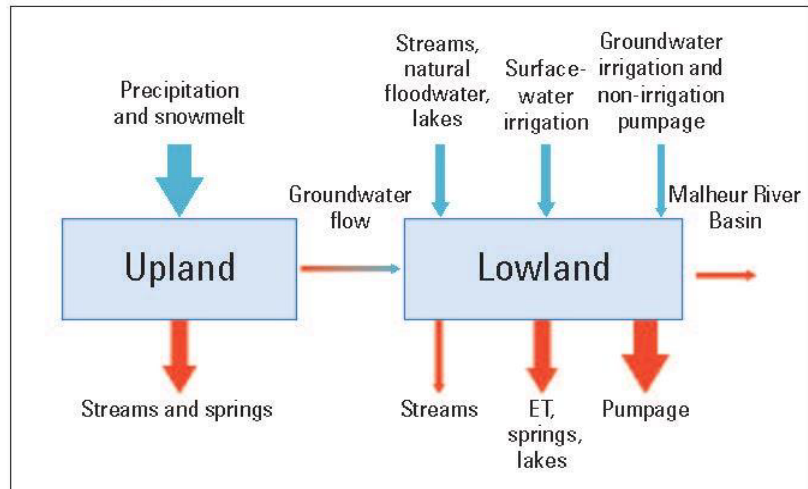


CBWP Process

Predevelopment



Post-development



EXPLANATION

 Recharge (inflow)

 Discharge (outflow)

Note: ET = evapotranspiration

- Recently completed groundwater budget for the Harney Basin documents an estimated deficit of approximately 110,000 ac-ft (Gingerich et al., 2022 and Garcia et al., 2022)

CBWP PROCESS - WHERE ARE WE?

Harney Basin Groundwater Portion of Integrated Water Plan

DRAFT 5

Harney Community-Based Water Planning Collaborative



*A sustainably managed supply of quality water for people, the
economy, and the environment.*

June 2022 **DRAFT 5**

CBWP Process – Creative Solutions

**Near-Term
Strategies-
to be
initiated
within the
next 3 years**

	Strategy	Status
	Explore Long-Term Approaches to Assist Domestic Water Users	Ongoing
	Conserve Groundwater Dependent Ecosystems	Ongoing
	Protect Water Rights when Reducing Groundwater Use	Ongoing
★	Develop Alternative Crops	Ongoing
★	Monitor and Inventory Groundwater Dependent Ecosystems	Not Started
★	Explore Remote Sensing of Groundwater Use	Ongoing
★	Measure Groundwater Use	Not Started
	Continue Groundwater Studies	Ongoing
	Identify and Utilize Best Available Science	Ongoing
★	Use Less Water Through Technology	Ongoing
★	Support a Groundwater CREP Program	Ongoing
	Develop a Domestic Well Remediation Fund	Completed
	Advocate for Groundwater Permit Compliance	Ongoing
	Ensure CBWP Representation in Rulemaking	Ongoing
	Improve Community Information about Groundwater Conditions	Not Started
★	Build Understanding of Voluntary Agreements	Ongoing
★	Improve Well Construction and Permit Standards	Ongoing

CBWP Process – Creative Solutions

**Mid-Term
Strategies-
to be
initiated
within the
next 4-10
years**

Strategy	Status
Develop a Drought Plan	Not Started
Increase Understanding of Groundwater Rights	Ongoing
Develop an Abandoned Well Safe Harbor Program	Not Started
Assess the Economic Value of Groundwater in the Harney Basin	Not Started
Establish a Groundwater Quality Monitoring Program	Not Started
Expand Groundwater Quality Knowledge	Not Started
Develop Alternative Water Delivery for Rural Residents	Ongoing
★ Evaluate Well Standards for the Harney Basin	Not Started
★ Explore a Groundwater Market	Not Started
Integrate Water Use in Land Use Decisions	Not Started
Improve Citizen Engagement in OWRD Decisions	Ongoing
★ Work with OWRD to Address Abandoned Wells	Ongoing

CBWP Process – Creative Solutions

**Long-Term
Strategies-
to be
initiated
within the
next 10
years +
beyond**



Strategy	Status
Ensure Conserved Water Remains in the Ground	Not Started
Explore Groundwater Use Fees	Not Started

Major Milestones + Challenges

- Finished a draft of the plan before the Groundwater Study was published—really planned in parallel with that process
- Strategies are already in progress (CREP, domestic well fund, etc.)
- Progress made despite challenges with pandemic
- Worked with the State to navigate a review process for the groundwater portion





Major Milestones + Challenges

- Place-based planning participants in Harney County have added tremendous capacity to Or Water Resources Department – we are the eyes and ears of the department in this process
 - Place based planning brings added funding
 - Place based planning helps with outreach and expertise
 - Project manager and plan writer are all part of the capacity that we can bring for helping solve complex problems
- We are moving forward and completing need feasibility and first steps for a number of strategies agreed upon by the collaborative

Gaps + Needs

- 2018 – We asked will our plan have weight with the state? 2022 – We still don't know what state recognition really means
- Conducted the groundwater portion of planning without the benefit of the groundwater study
- Recognize that OWRD tool of designation of Critical Groundwater Management Area is delayed by rulemaking and a complex process but creates difficulty in the community and collaborative.
- If we want to do something different, we have to try something different
 - Exploring what is required for voluntary agreement as authorized by ORS 537.745 To date we have not heard from OWRD staff on the draft report

Implications to Community



Path Ahead

- Consensus event on the groundwater plan:
July 28
 - State Agency Review process + public comment period
 - Final review by Collaborative
 - Present to Commission
- Scoping for and launching Phase 2 (Surface Water)
- Integrated Plan: Q4 2023



QUESTIONS?