



June 2023 Update for Precipitation & Temperatures

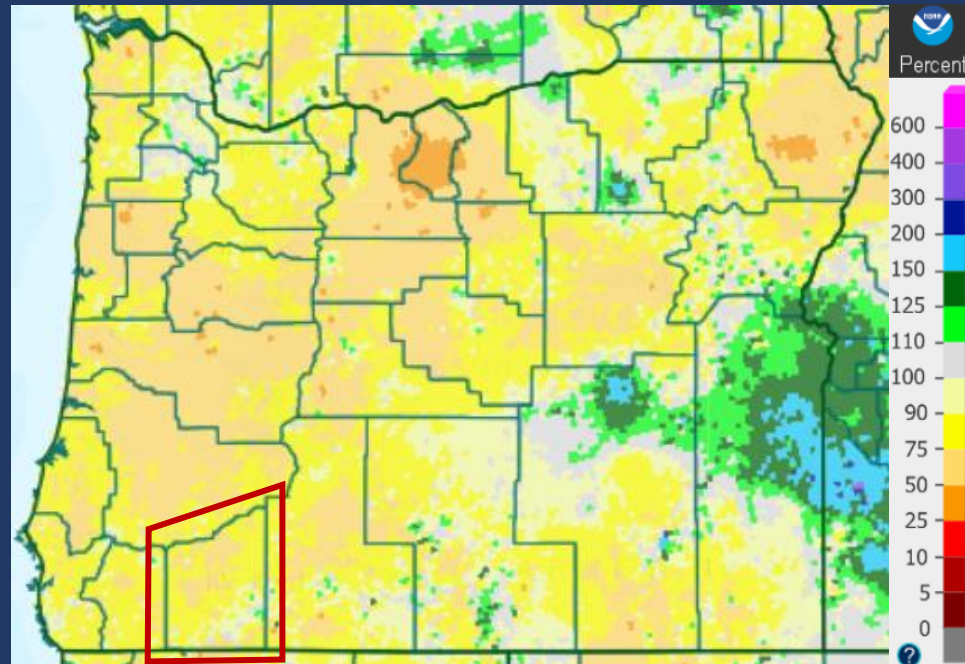
NOAA National Weather Service - Portland, Oregon



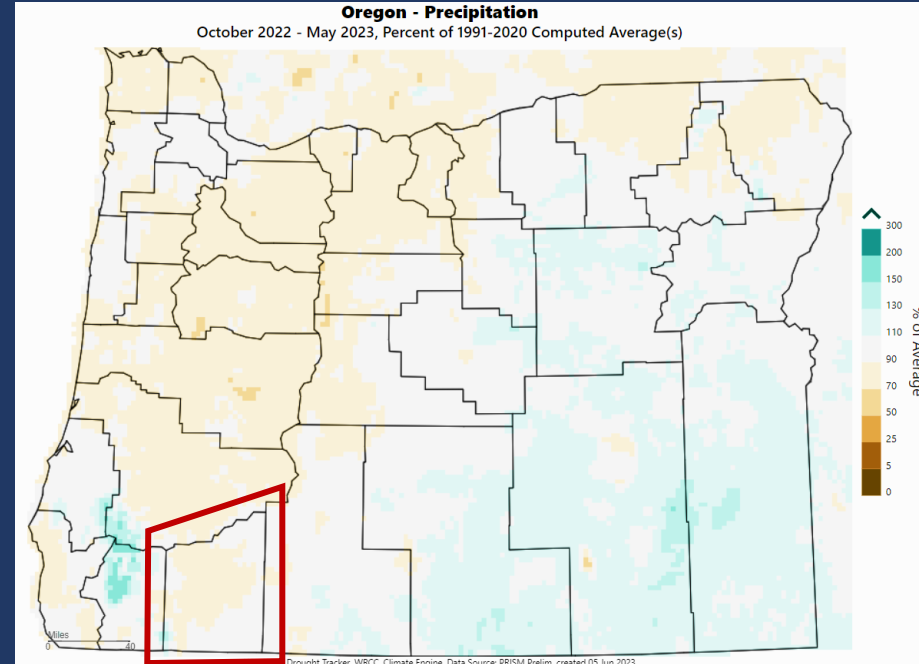
Water Year Precipitation

NWS AHPS & WRCC Comparison

AHPS % Normal



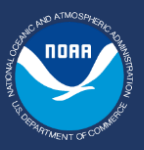
WRCC % Normal



water.weather.gov/precip/index.php

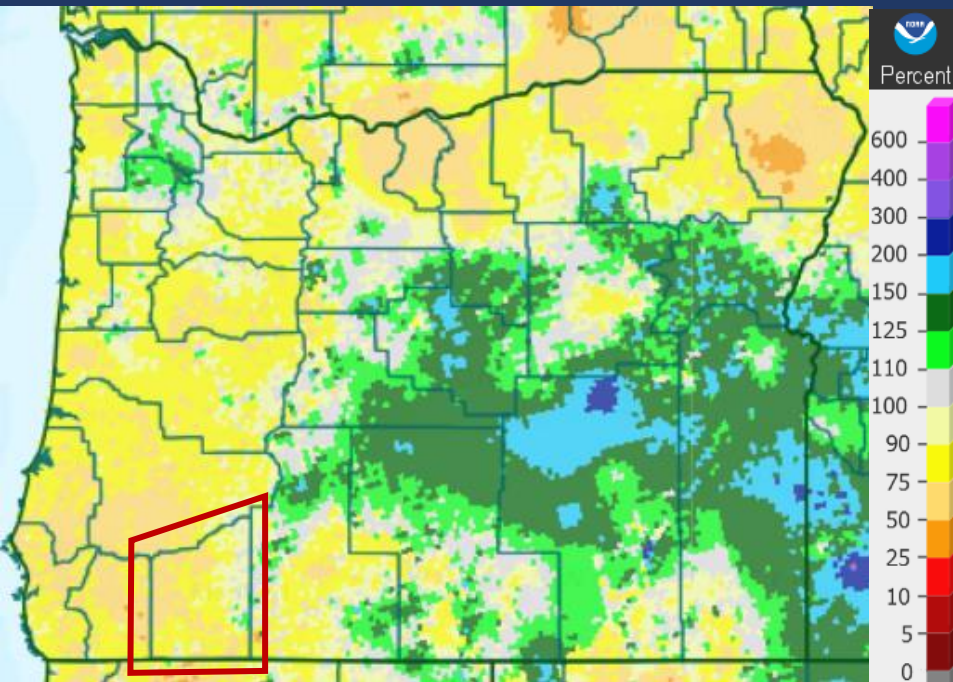
wrcc.dri.edu/my/wwdt

Precipitation Data as of June 13, 2023

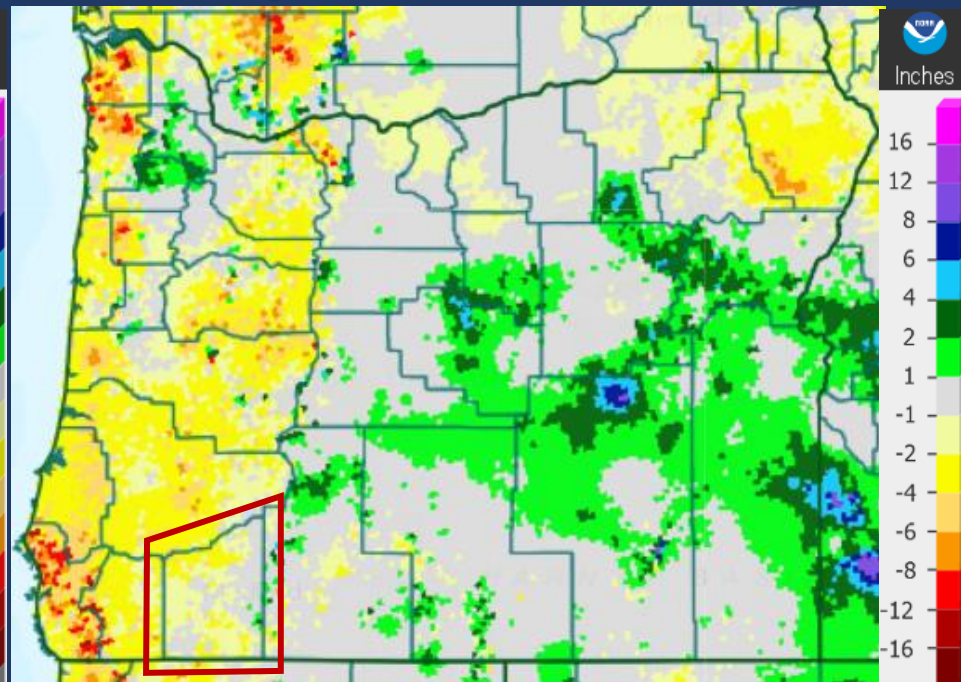


Precipitation – Past 90 Days

% Normal



Departure from Normal

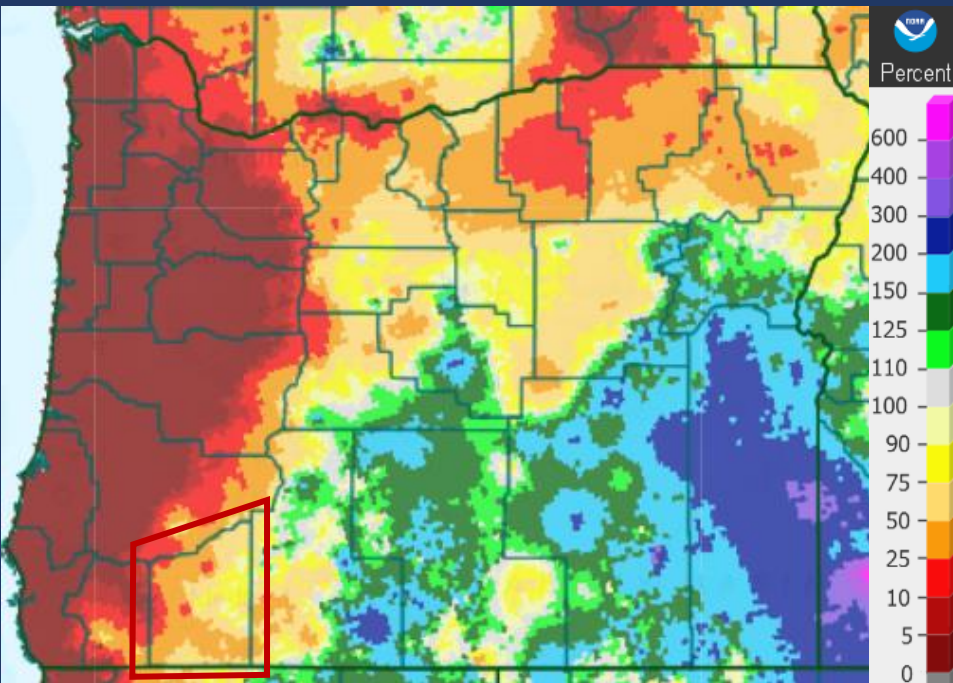


Precipitation Data as of June 13, 2023

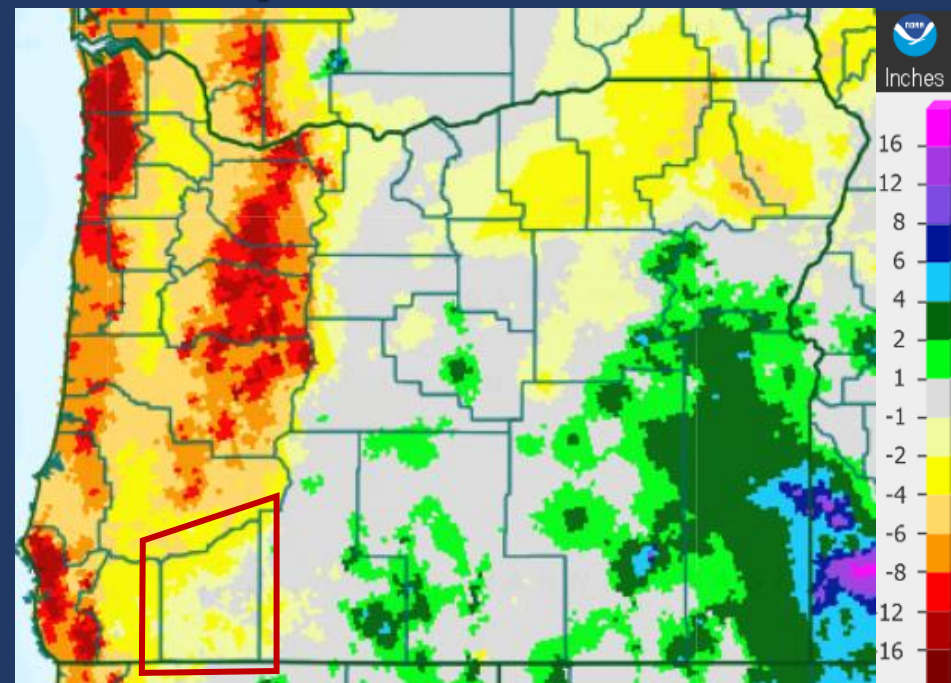
water.weather.gov/precip/index.php

Precipitation – Past 30 Days

% Normal



Departure from Normal



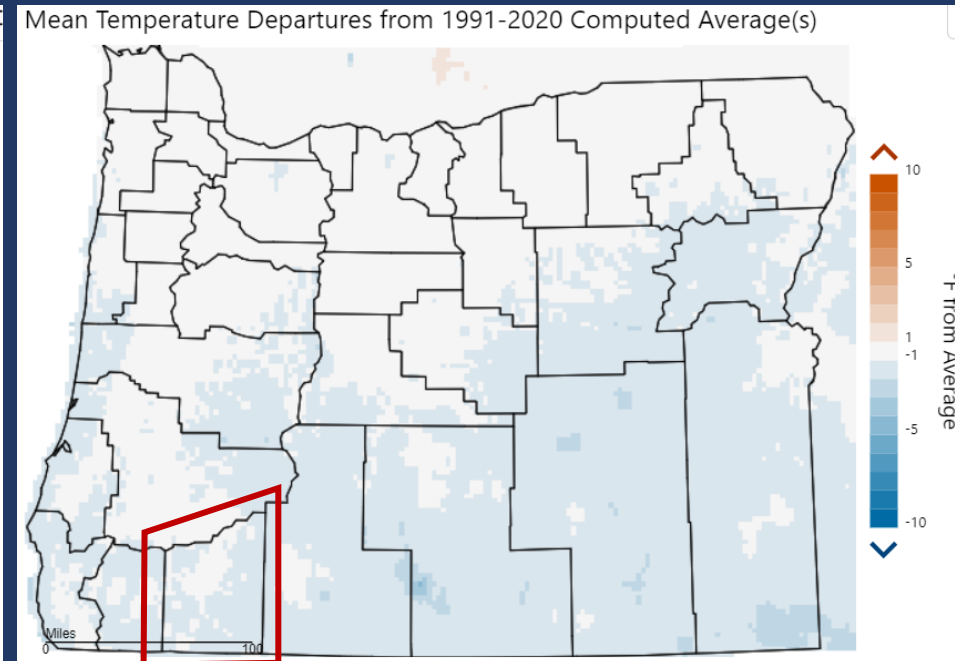
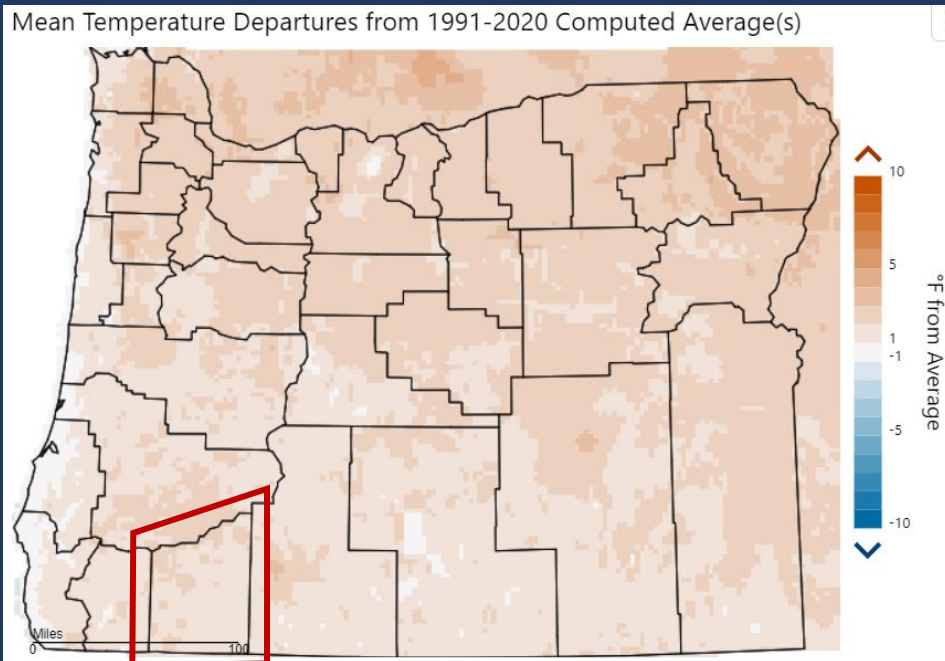
Precipitation Data as of June 13, 2023

water.weather.gov/precip/index.php

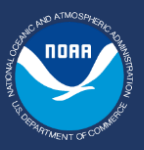
Temperatures

May Departure from Normal

Mar-May Departure from Norm



<https://wrcc.dri.edu/wwdt/index.php?region=pnw>



Drought Monitor

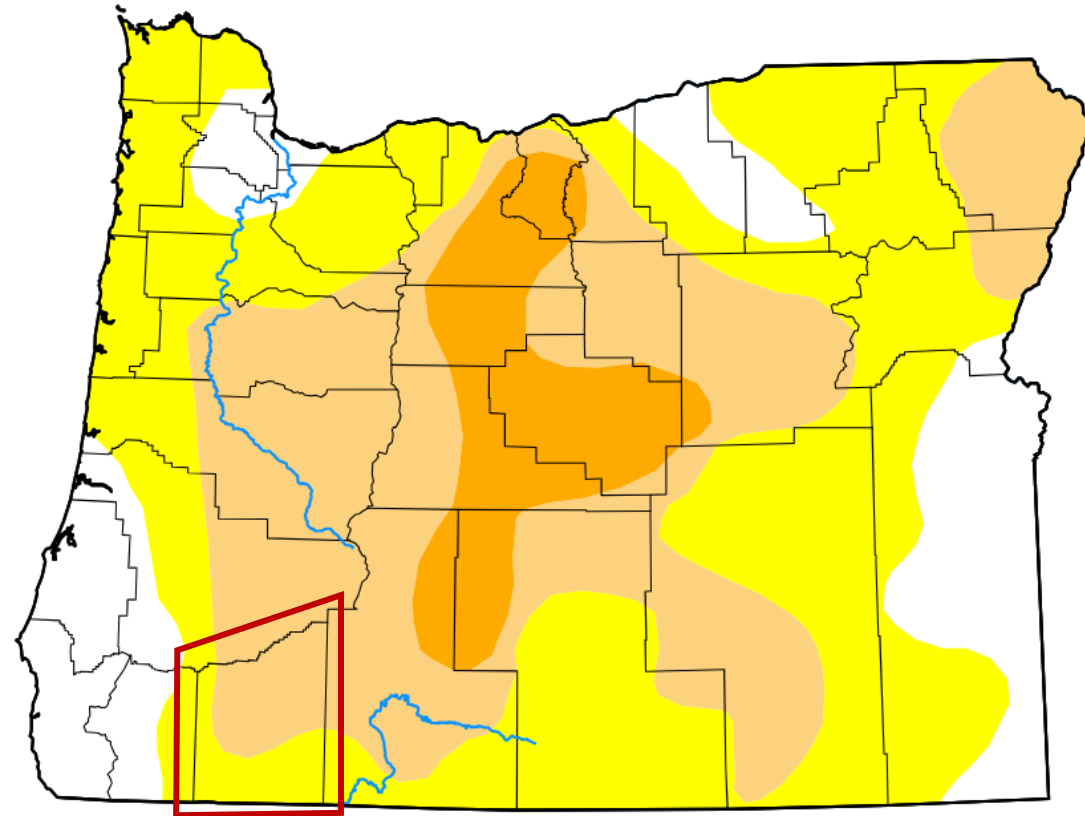
U.S. Drought Monitor Oregon

Map released: Thurs. June 8, 2023

Data valid: June 6, 2023 at 8 a.m. EDT

Intensity

- None
- D0 (Abnormally Dry)
- D1 (Moderate Drought)
- D2 (Severe Drought)
- D3 (Extreme Drought)
- D4 (Exceptional Drought)
- No Data



droughtmonitor.unl.edu

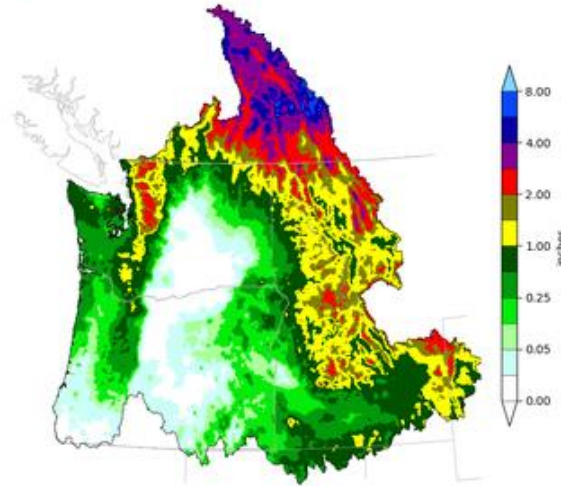


Mid June Outlook

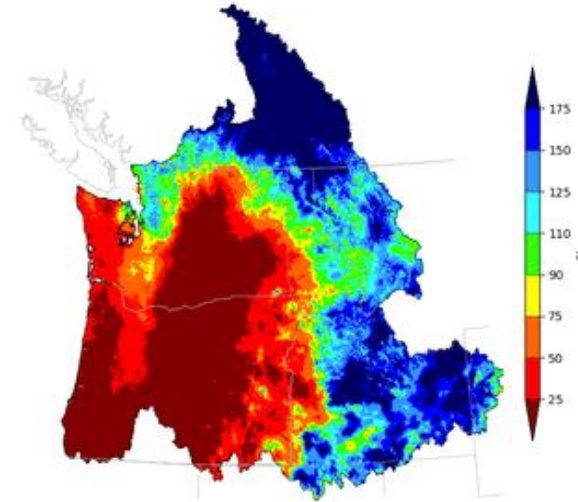
NWRFC 10-DAY PRECIPITATION FORECAST as of 6/14/2023

www.nwrfc.noaa.gov/water_supply/wy_summary/wy_summary.php

Northwest River Forecast Center
10 Day QPF, Ending 12Z, 06/23/23

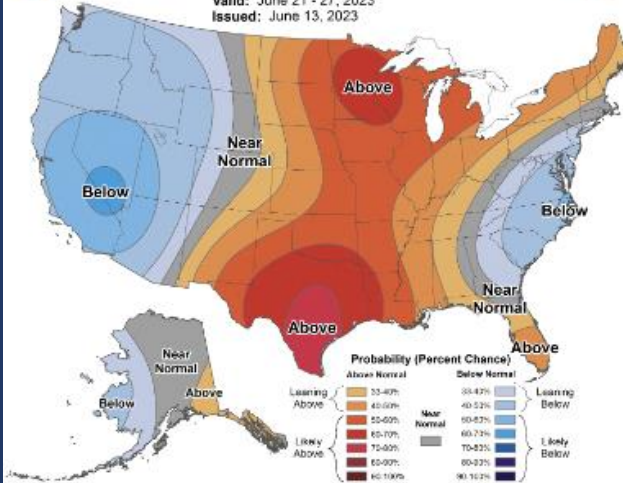


Northwest River Forecast Center
10 Day QPF (Percent of Climatology), Ending 12Z, 06/23/23



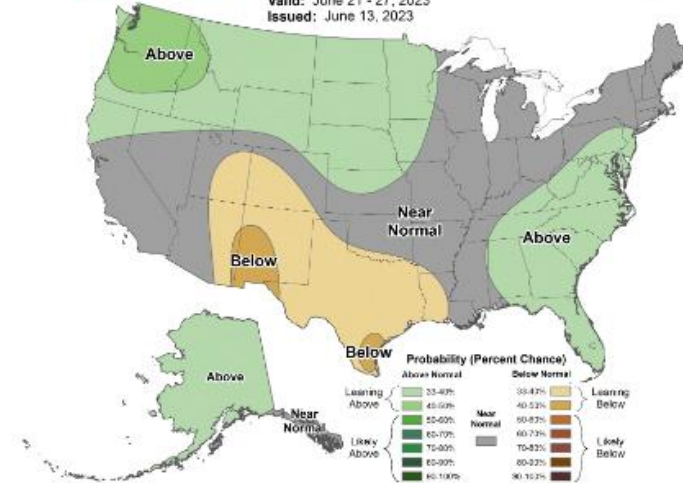
8-14 Day Temperature Outlook

Valid: June 21 - 27, 2023
Issued: June 13, 2023



8-14 Day Precipitation Outlook

Valid: June 21 - 27, 2023
Issued: June 13, 2023



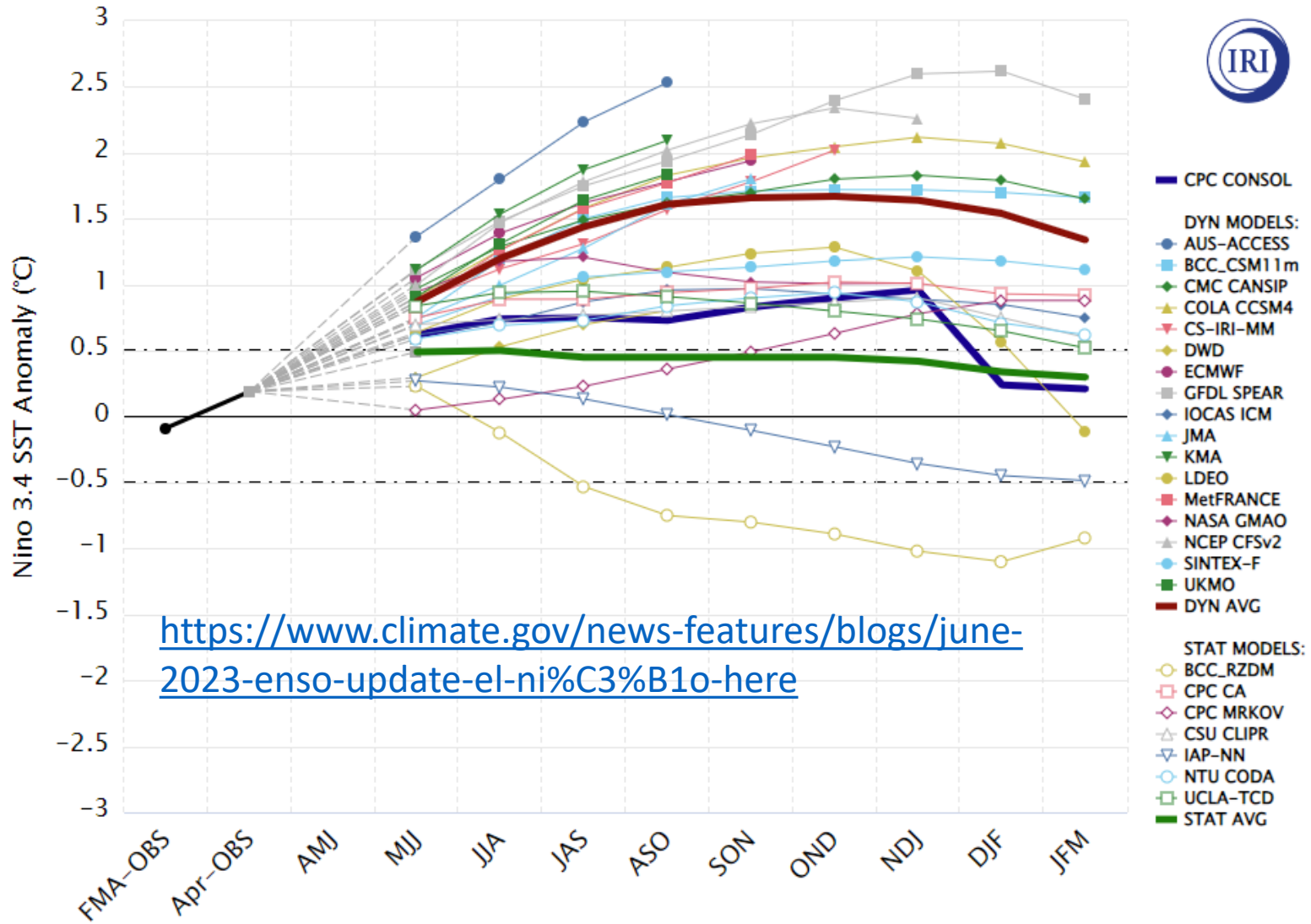
CPC 8 - 14 DAY OUTLOOK

www.cpc.ncep.noaa.gov



ENSO Status & Prediction

Model Predictions of ENSO from May 2023



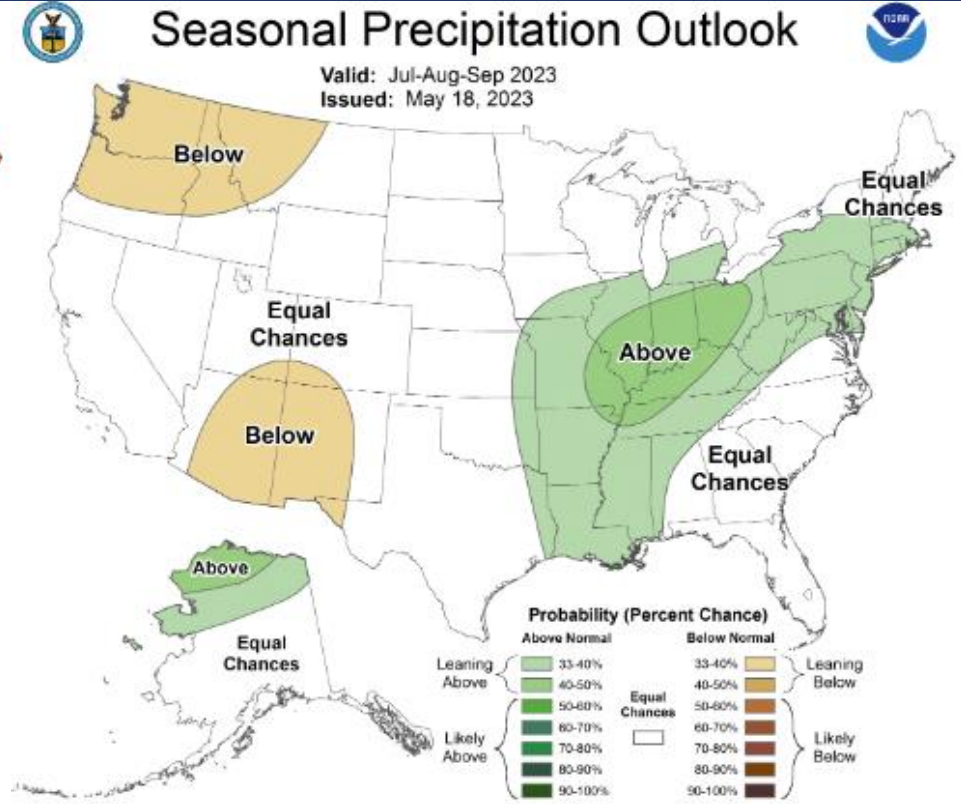
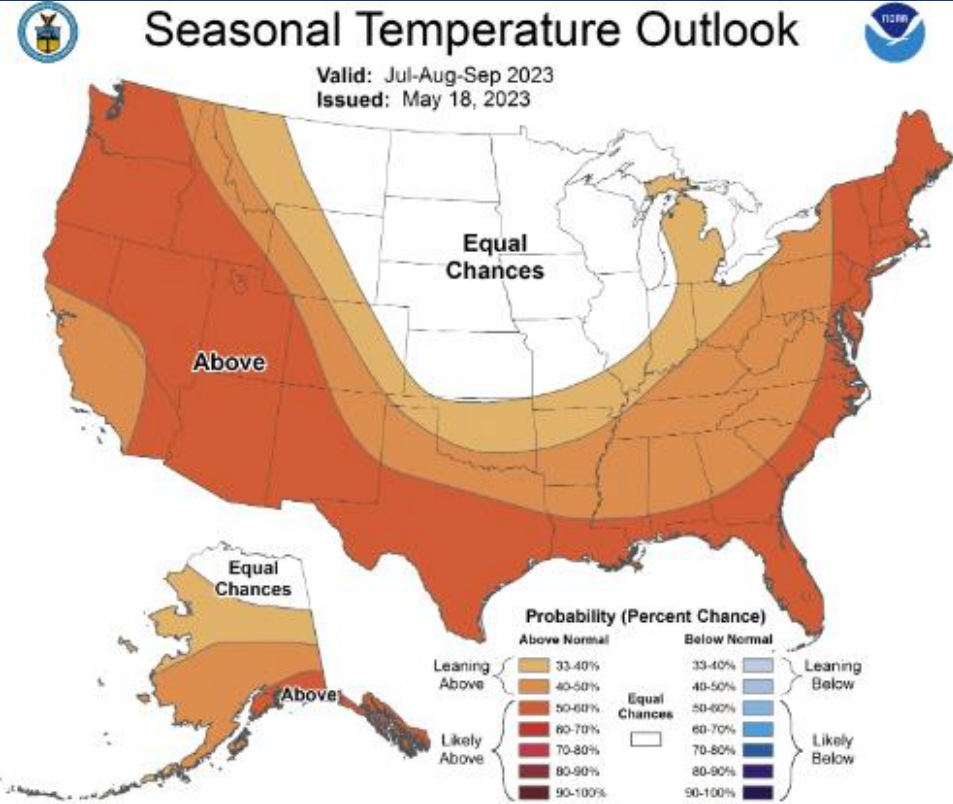
<https://www.climate.gov/news-features/blogs/june-2023-enso-update-el-ni%C3%B1o-here>

https://iri.columbia.edu/our-expertise/climate/forecasts/enso/current/?enso_tab=enso-sst_table

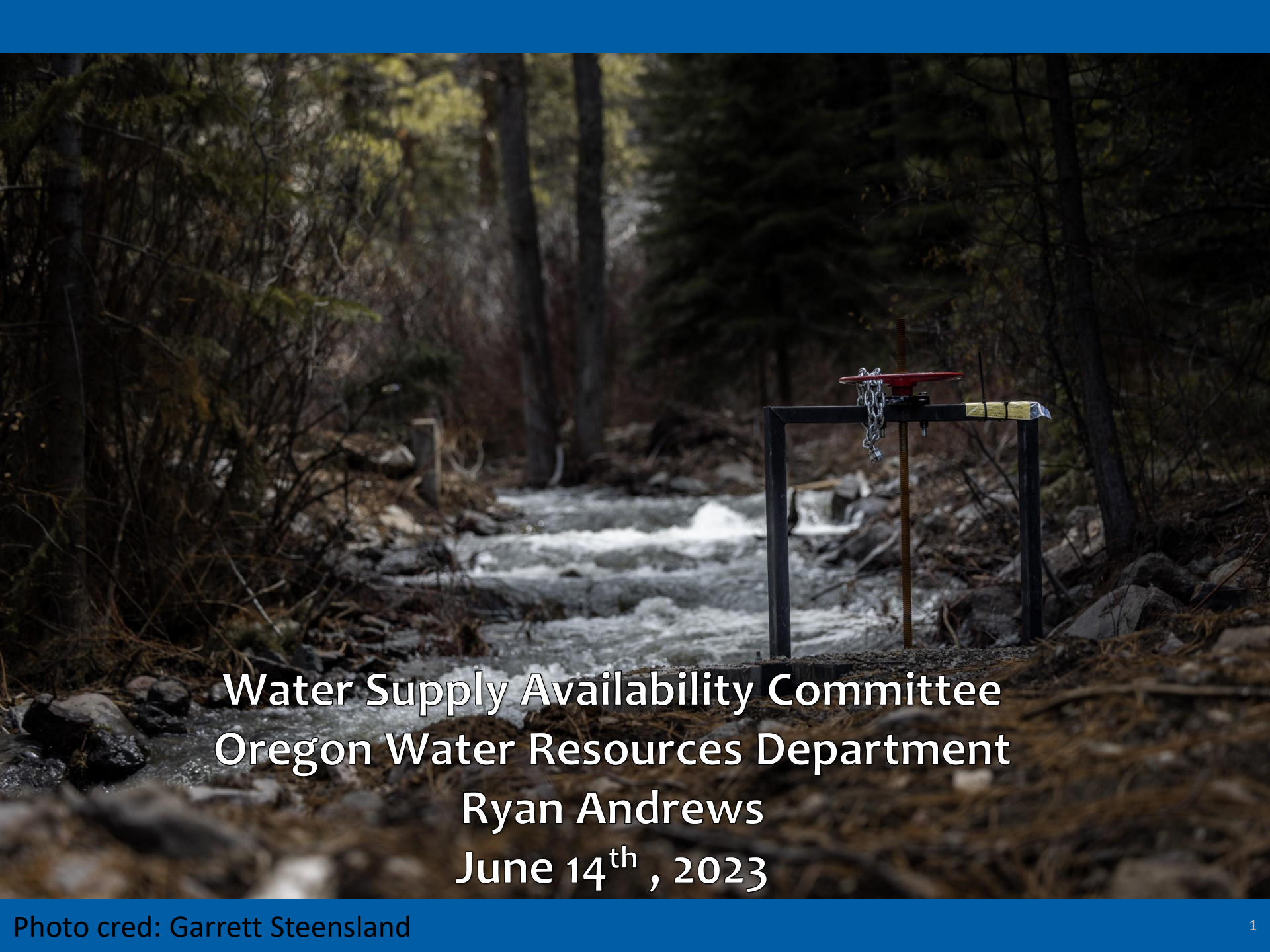


Climate Prediction Center Outlook

July – September 2023



www.cpc.ncep.noaa.gov

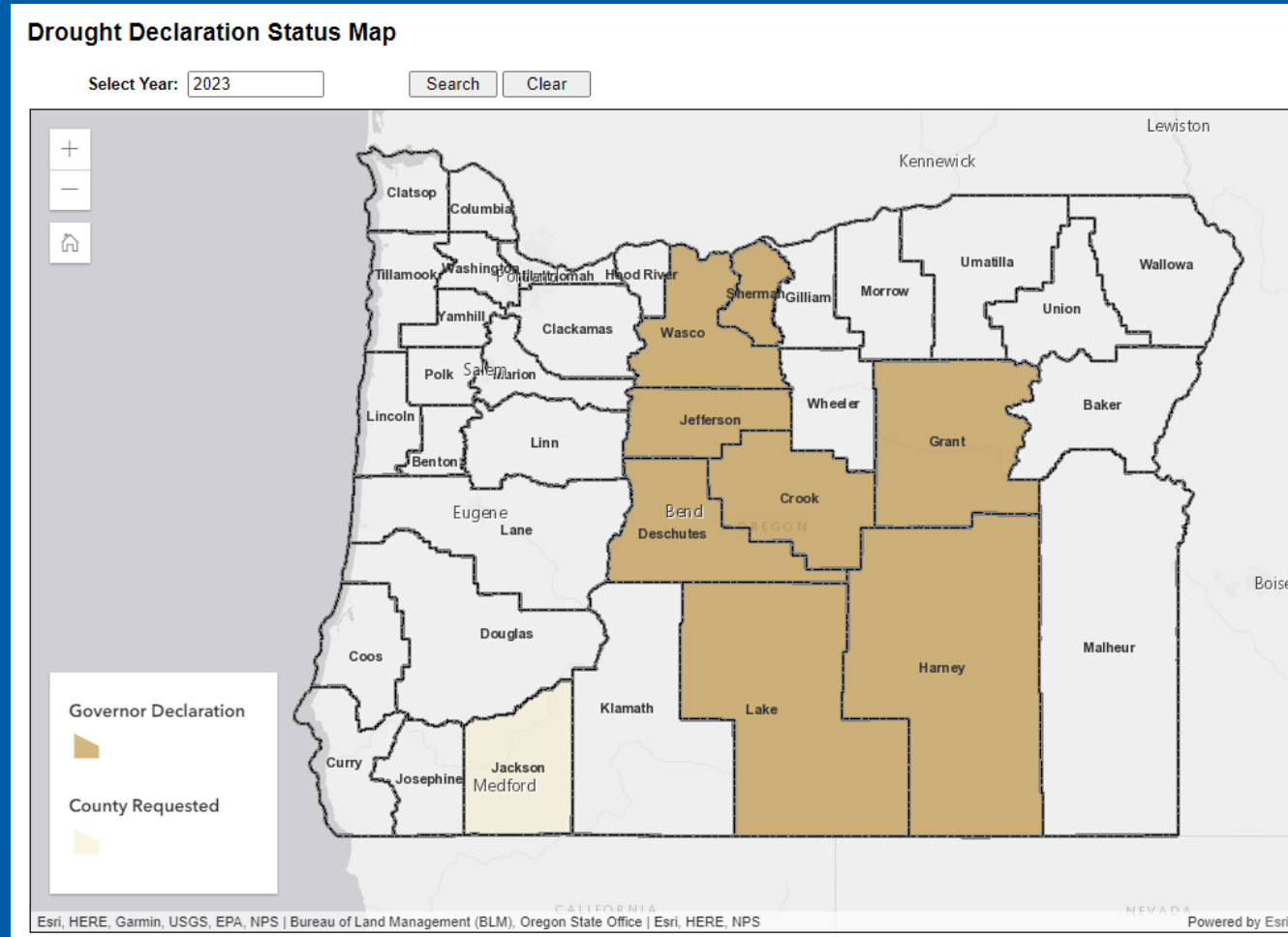
A photograph of a stream flowing through a forest. In the foreground, there is a metal frame structure with a red handle and a chain, possibly a water measurement device. The stream flows over rocks, creating white water. The background is filled with trees and dense foliage.

Water Supply Availability Committee
Oregon Water Resources Department
Ryan Andrews
June 14th , 2023

Drought Declarations



- Eight counties with Executive Orders for drought declarations under ORS 536
- Jackson County requesting



May % of Average Streamflow - WY 2023

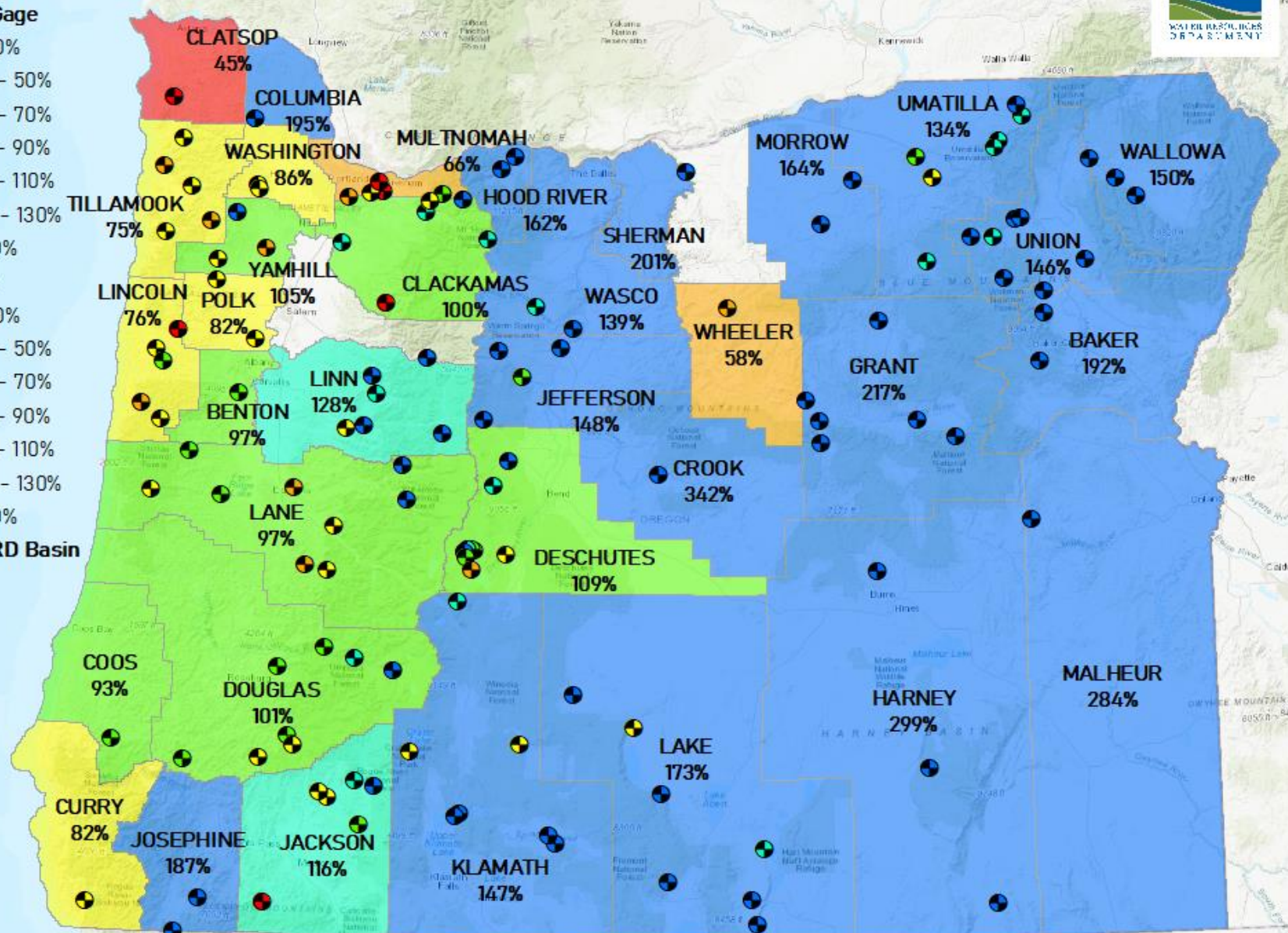


Stream Gage

- <= 30%
- 31% - 50%
- 51% - 70%
- 71% - 90%
- 91% - 110%
- 111% - 130%
- > 130%

Counties

- 🔗 <= 30%
- 🔗 31% - 50%
- 🔗 51% - 70%
- 🔗 71% - 90%
- 🔗 91% - 110%
- 🔗 111% - 130%
- 🔗 > 130%
- 🔗 OWRD Basin



Date: 6/12/2023

Water Year To Date % of Average Streamflow - June 11, 2023



Stream Gage

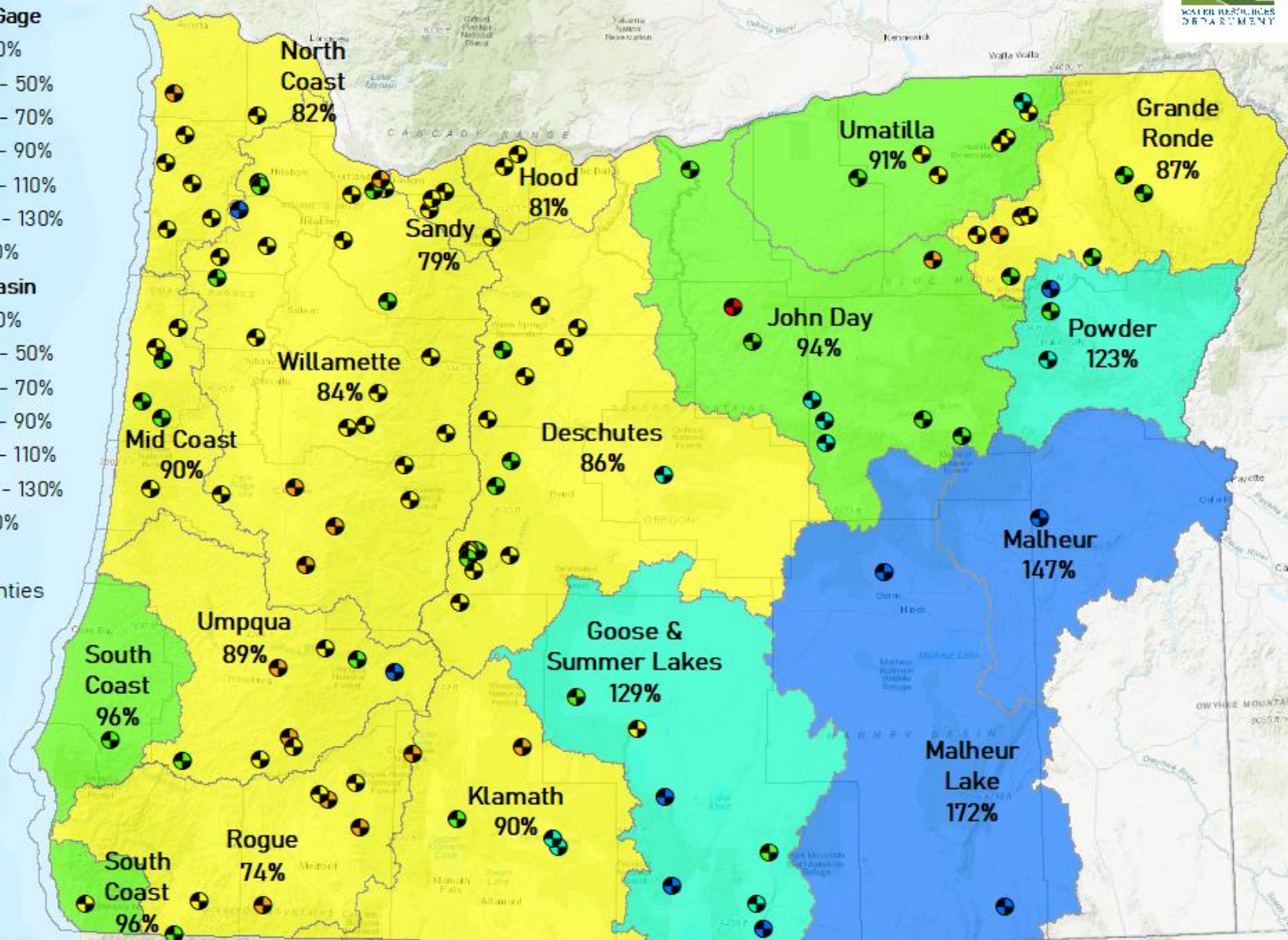
- <= 30%
- 31% - 50%
- 51% - 70%
- 71% - 90%
- 91% - 110%
- 111% - 130%
- > 130%

OWRD Basin

- <= 30%
- 31% - 50%
- 51% - 70%
- 71% - 90%
- 91% - 110%
- 111% - 130%
- > 130%

Counties

- Counties



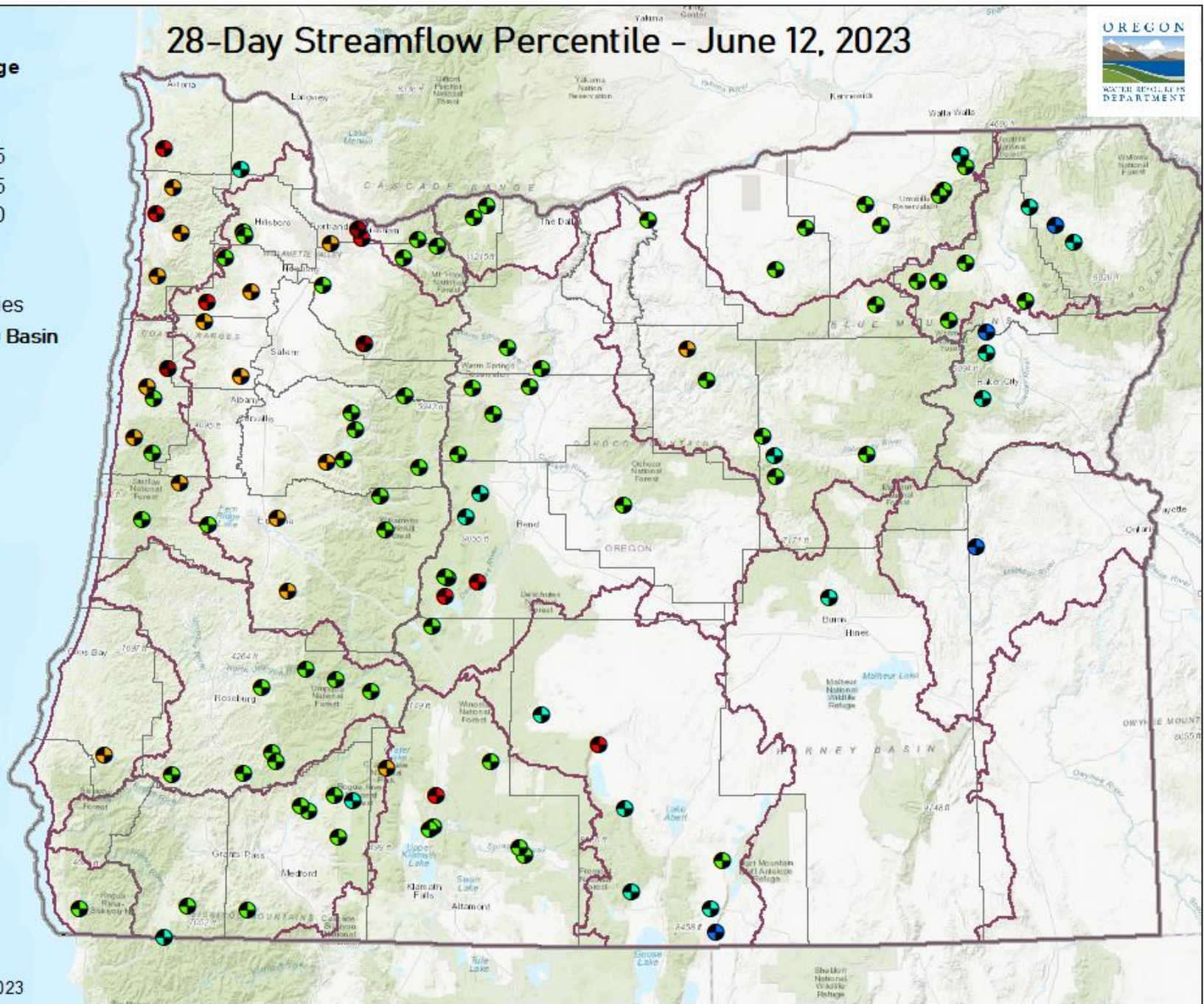
Date: 6/13/2023

28-Day Streamflow Percentile - June 12, 2023



Stream Gage

- LOW
- < 10
- 10 - 25
- 25 - 75
- 75 - 90
- > 90
- HIGH
- 🗺️ Counties
- 🗺️ OWRD Basin



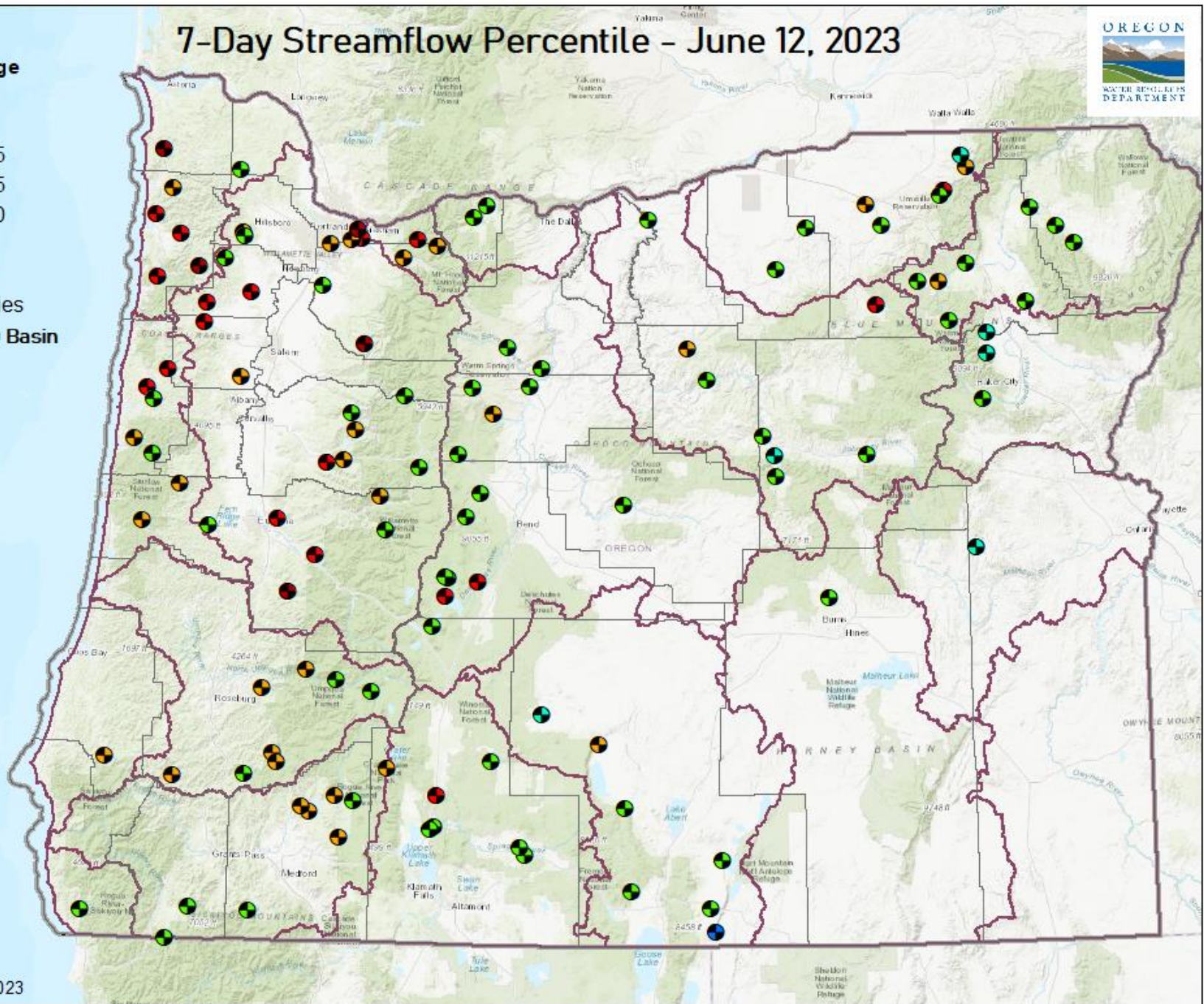
Date: 6/14/2023

7-Day Streamflow Percentile - June 12, 2023



Stream Gage

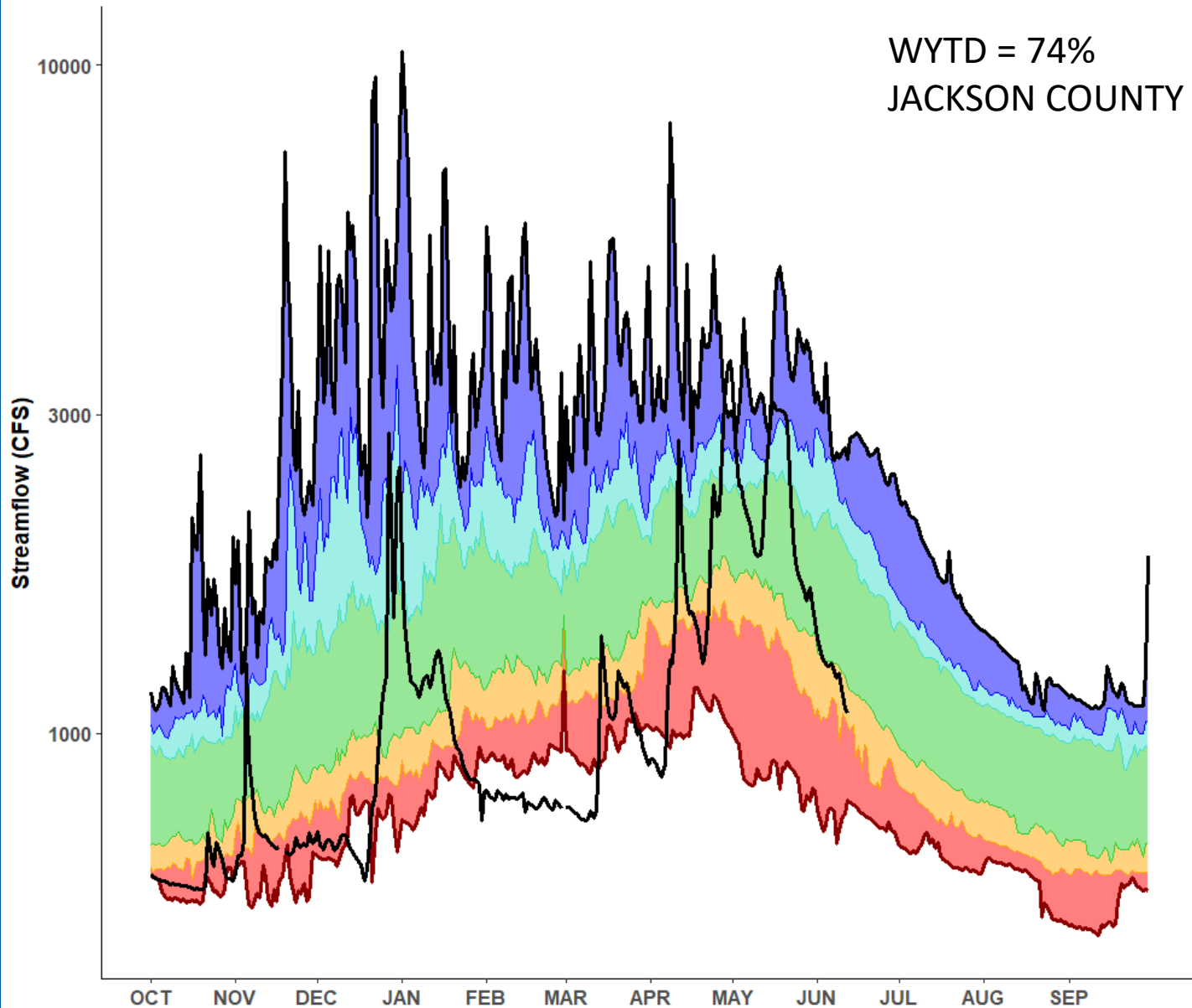
- LOW
- < 10
- 10 - 25
- 25 - 75
- 75 - 90
- > 90
- HIGH
- 🗺️ Counties
- 🗺️ OWRD Basin






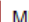



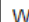
Date: 6/14/2023

14330000 - ROGUE R BL PROSPECT, OR
ROGUE BASIN
POR: 1991-2020

WYTD = 74%
JACKSON COUNTY

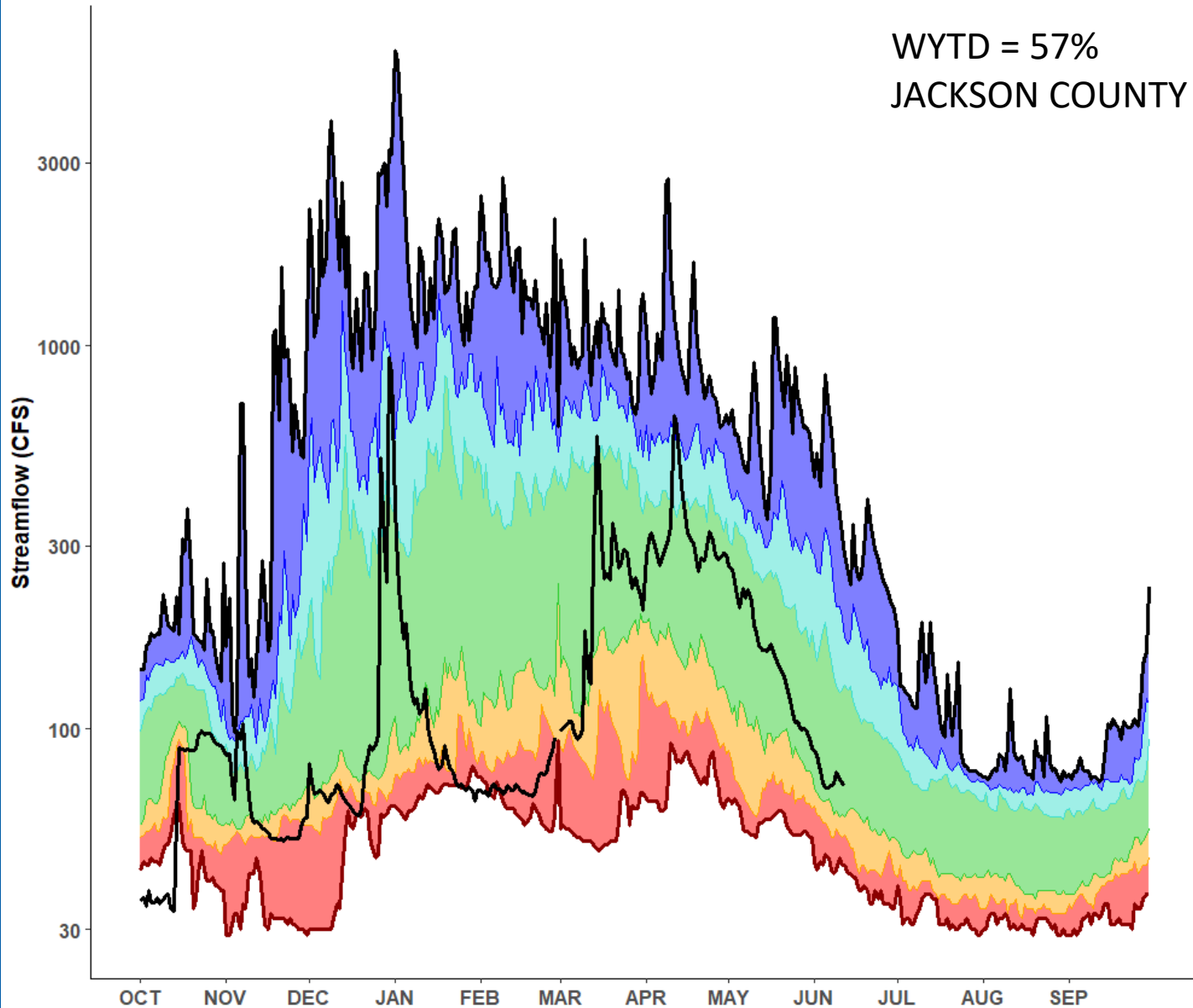


PERCENTILES

| | | | | | | | |
|---|------|---|---------|---|---------|---|---------|
|  | < 10 |  | 10 - 25 |  | 75 - 90 |  | MINIMUM |
|  | > 90 |  | 25 - 75 |  | MAXIMUM |  | WY2023 |

14337500 - BIG BUTTE CR NR MCLEOD, OR
ROGUE BASIN
POR: 1991-2020

WYTD = 57%
JACKSON COUNTY

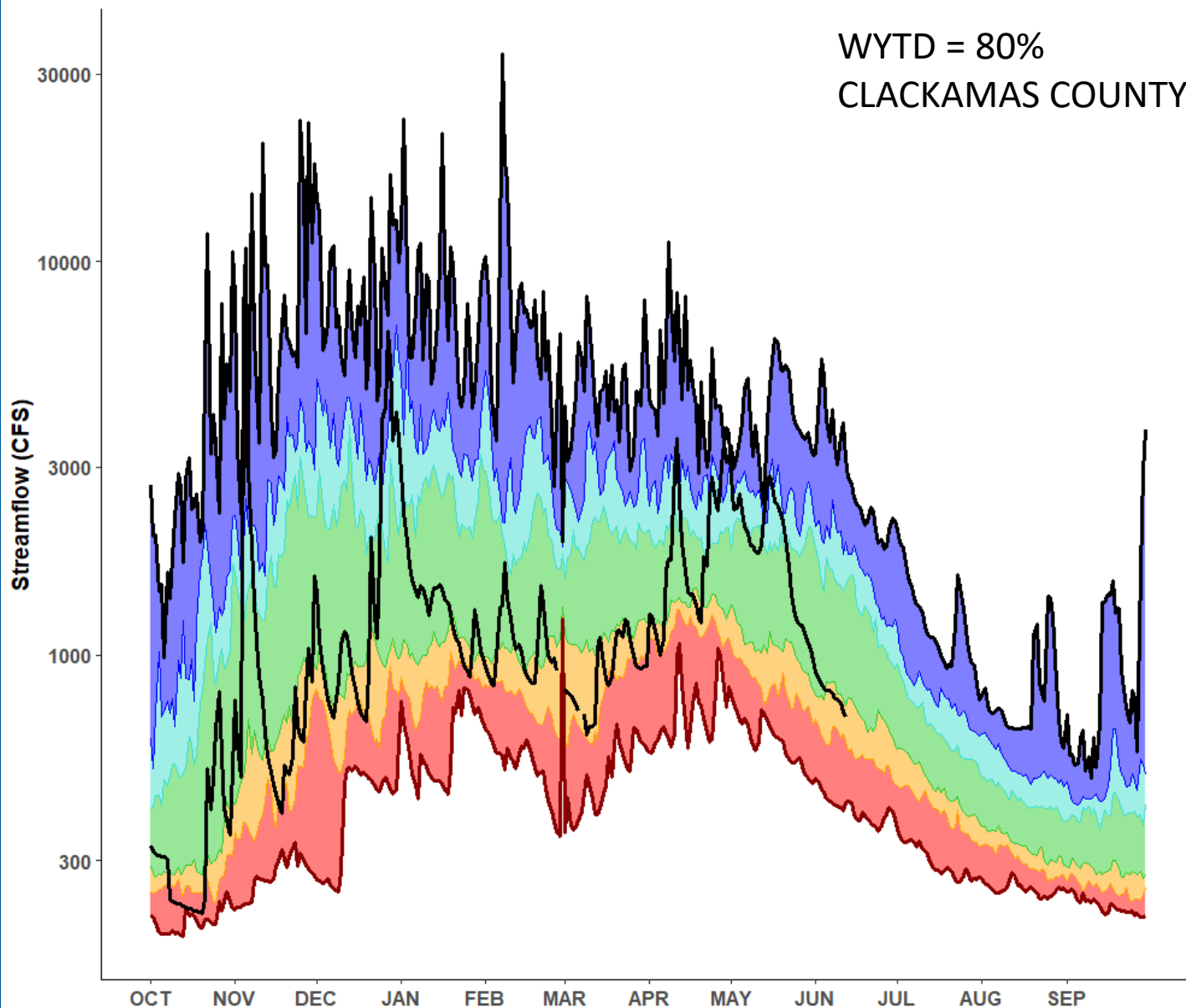


PERCENTILES

| | | | |
|------|---------|---------|---------|
| < 10 | 10 - 25 | 75 - 90 | MINIMUM |
| > 90 | 25 - 75 | MAXIMUM | WY2023 |

14137000 - SANDY R NR MARMOT, OR
SANDY BASIN
POR: 1991-2020

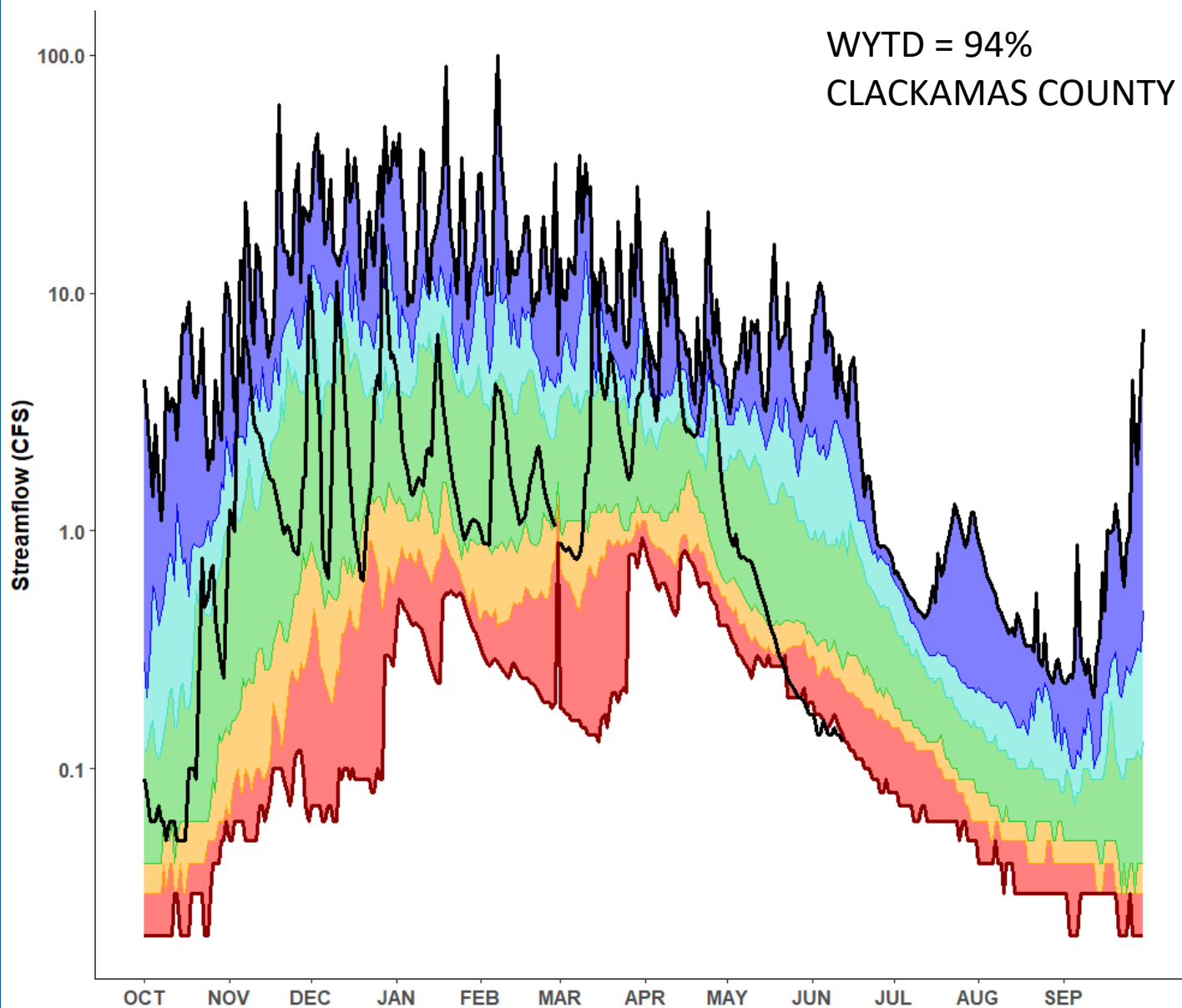
WYTD = 80%
CLACKAMAS COUNTY



PERCENTILES < 10 10 - 25 25 - 75 75 - 90 > 90 MINIMUM MAXIMUM WY2023

14198400 - BULL CR NR WILHOIT, OR
WILLAMETTE BASIN
POR: 1991-2020

WYTD = 94%
CLACKAMAS COUNTY

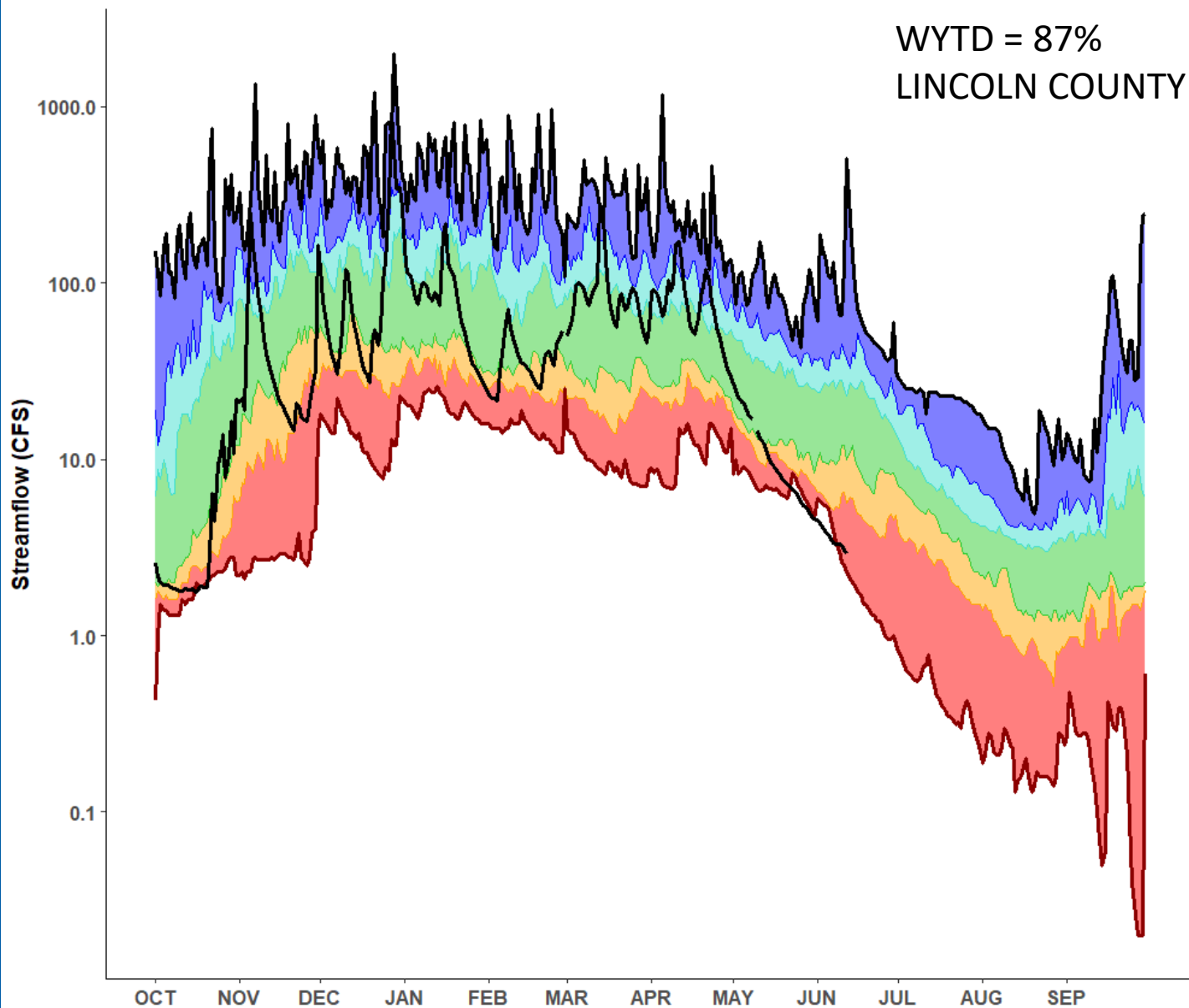


PERCENTILES

| | | | |
|------|---------|---------|---------|
| < 10 | 10 - 25 | 75 - 90 | MINIMUM |
| > 90 | 25 - 75 | MAXIMUM | WY2023 |

14304350 - SUNSHINE CR NR VALSETZ, OR
MID COAST BASIN
POR: 1991-2020

WYTD = 87%
LINCOLN COUNTY



PERCENTILES

| | | | | |
|---------|---------|---------|---------|------|
| < 10 | 10 - 25 | 25 - 75 | 75 - 90 | > 90 |
| MINIMUM | MAXIMUM | WY2023 | | |

Summary



- Jackson County requesting drought declaration
- Rapid snowmelt and lack of precipitation in western Oregon led to below average streamflows
- Southeastern Oregon benefitting from above average precipitation

OREGON



WATER RESOURCES
DEPARTMENT

QUESTIONS?



— BUREAU OF —
RECLAMATION

Reclamation Storage Update

Oregon Water Supply Availability Committee
Meeting

June 14, 2023

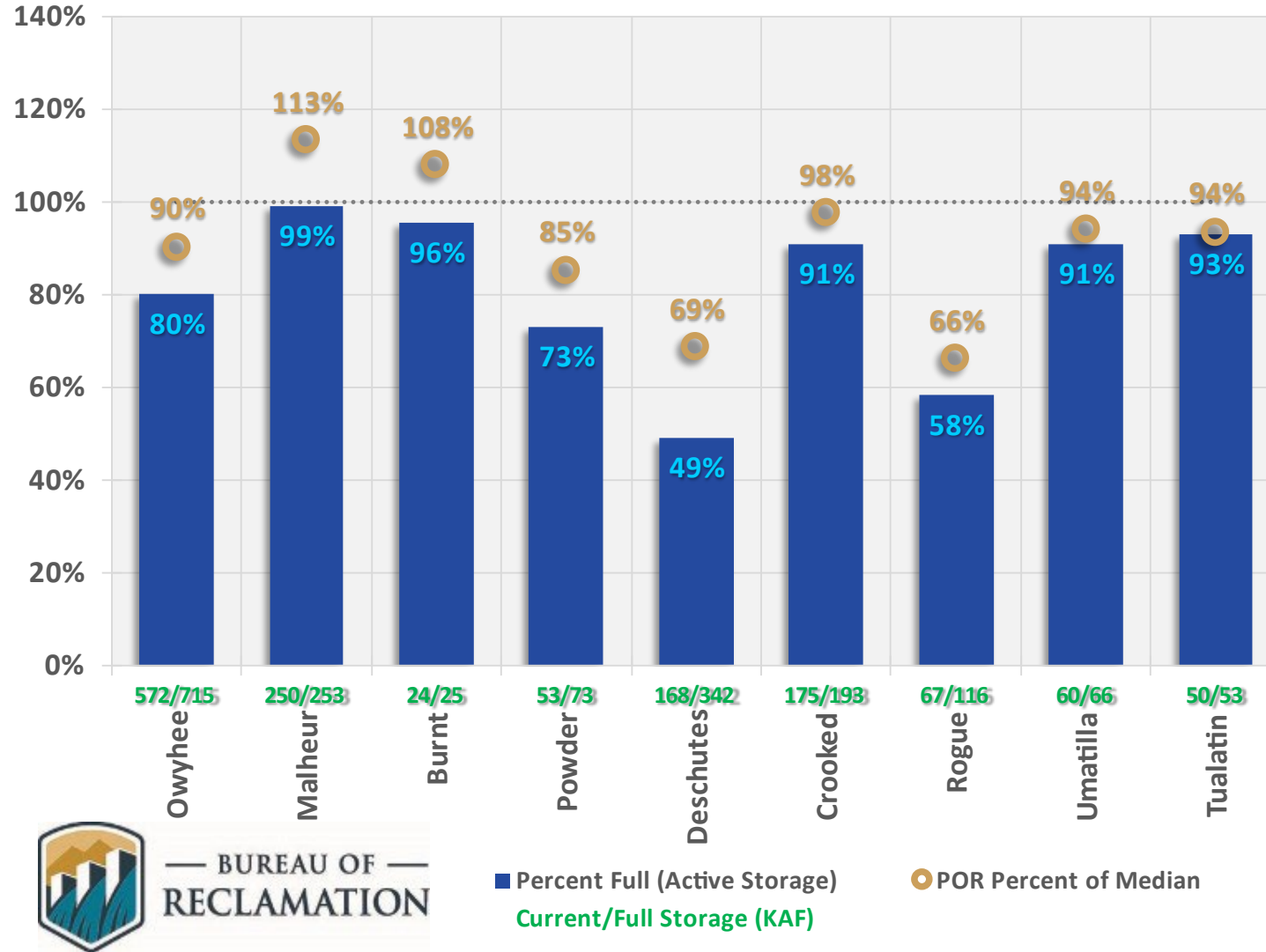
Basin Operations Summary

- **Operations Activities:**
 - Majority of facilities are releasing to meet irrigation demands
 - Some fill management still occurring in Southeast Oregon with rain and near full reservoirs
- **Water Supply Notes**
 - Many facilities near full with most others at least back in or near the historical interquartile “normal” range (exceptions: Deschutes, Rogue (*Jackson County), Scoggins which are below the “normal” range)



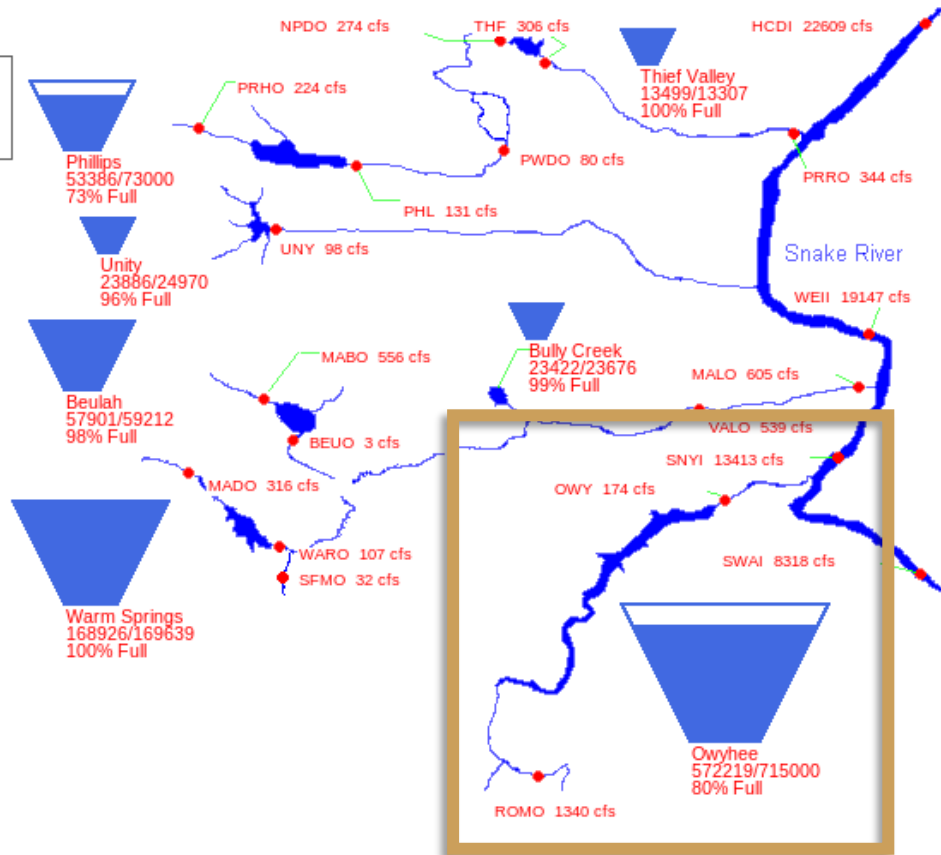
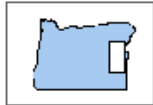
Storage Conditions

Oregon Reservoir Storage (Jun 13 2023)

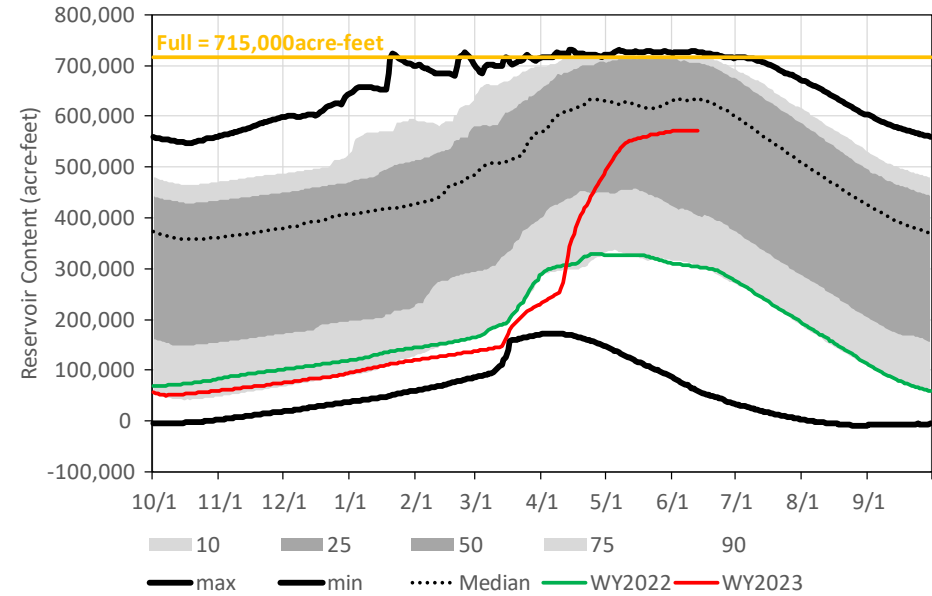


Owyhee River Basin

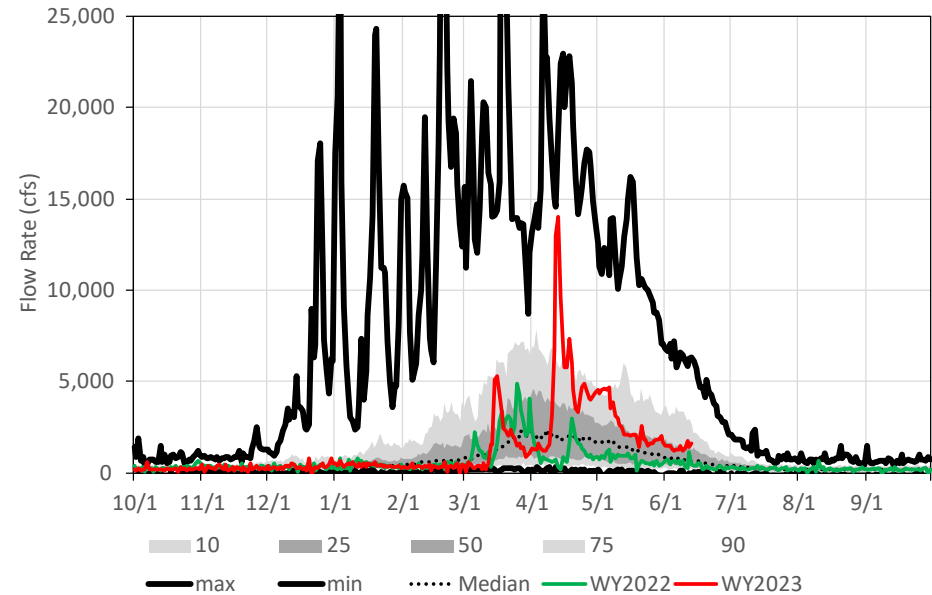
06/13/2023



Owyhee Reservoir
Historical Reservoir Content
Statistics based on WY1939WY2022 Data in Reclamation Hydromet Database

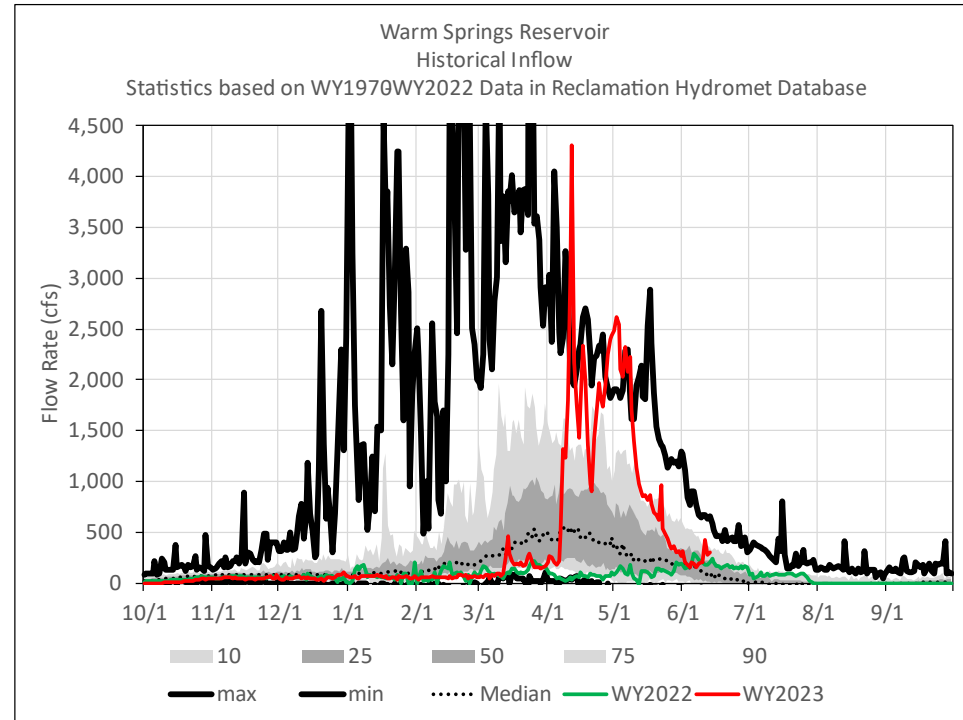
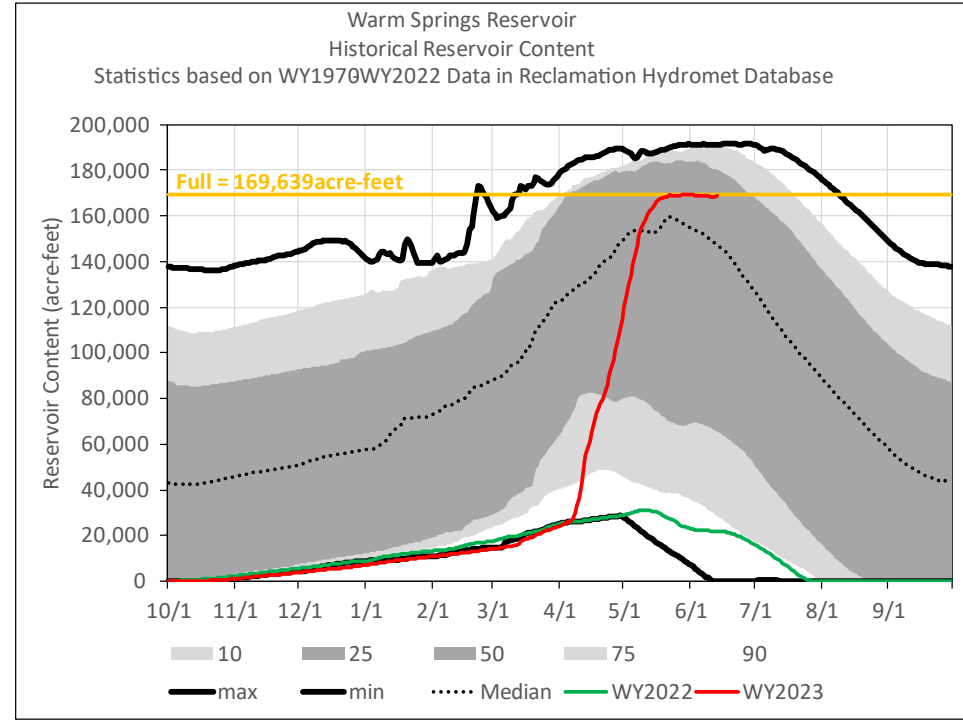
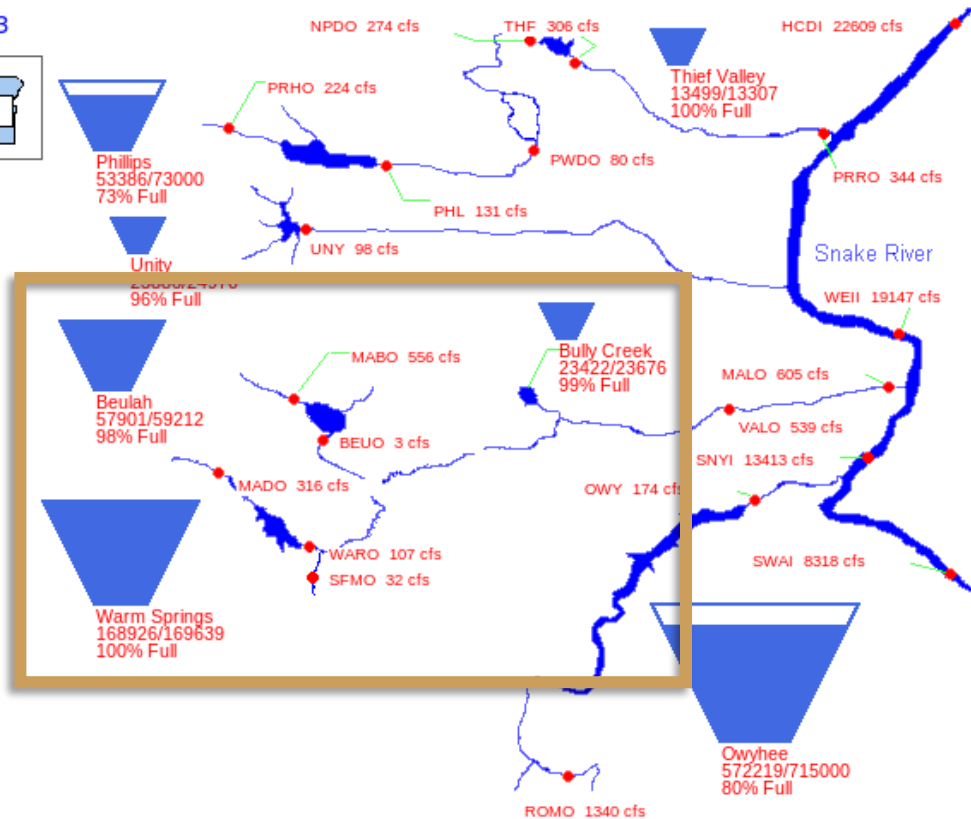
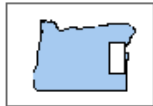


Owyhee Reservoir
Historical Inflow
Statistics based on WY1939WY2022 Data in Reclamation Hydromet Database



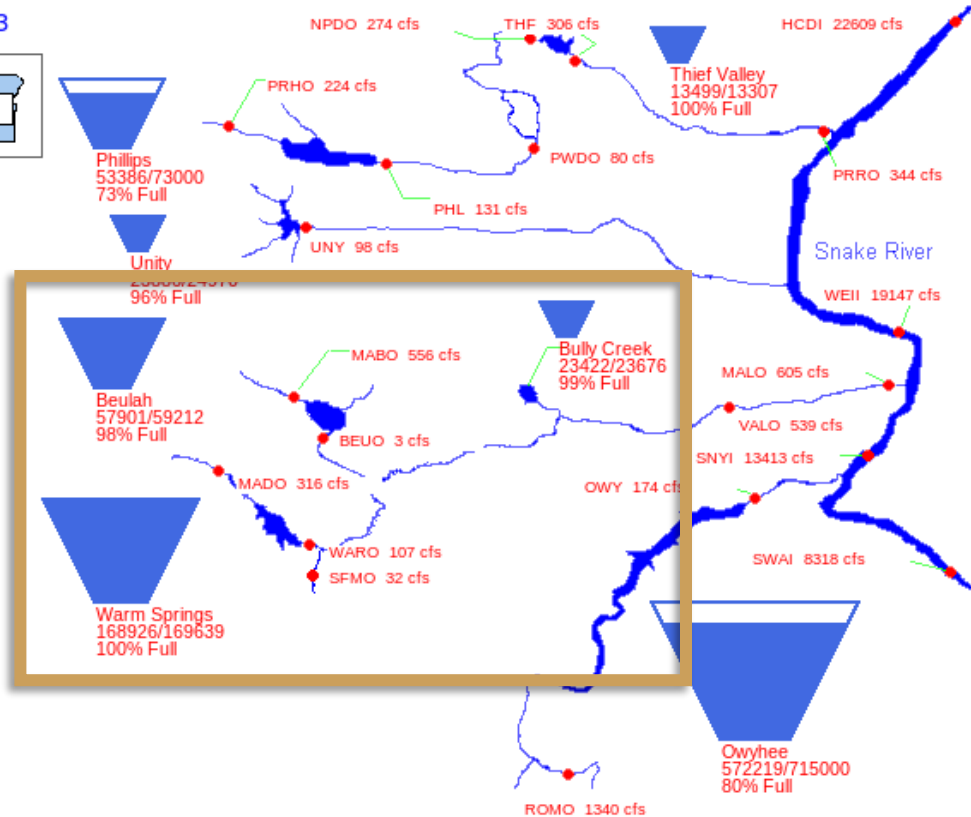
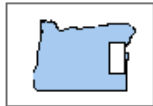
Malheur River Basin

06/13/2023

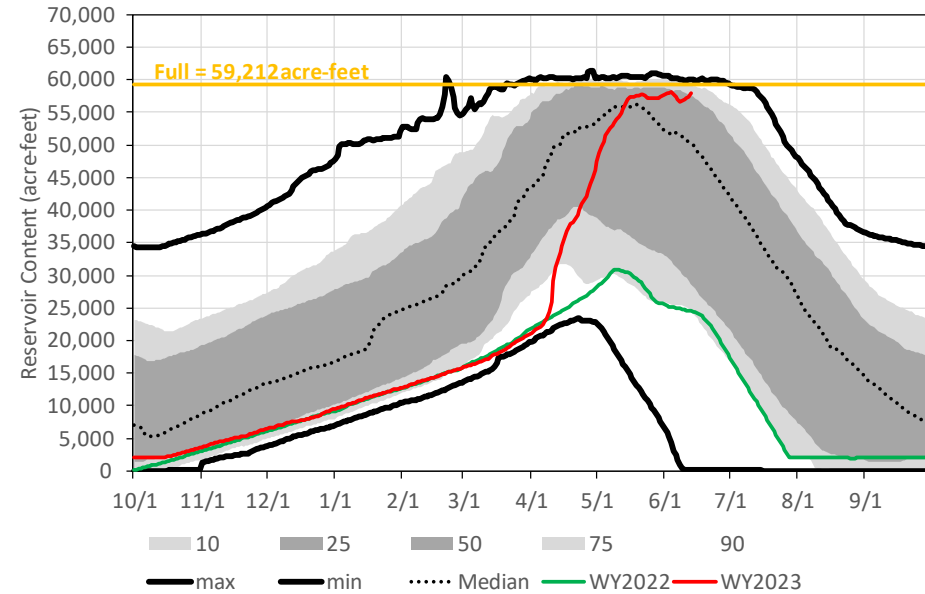


Malheur River Basin

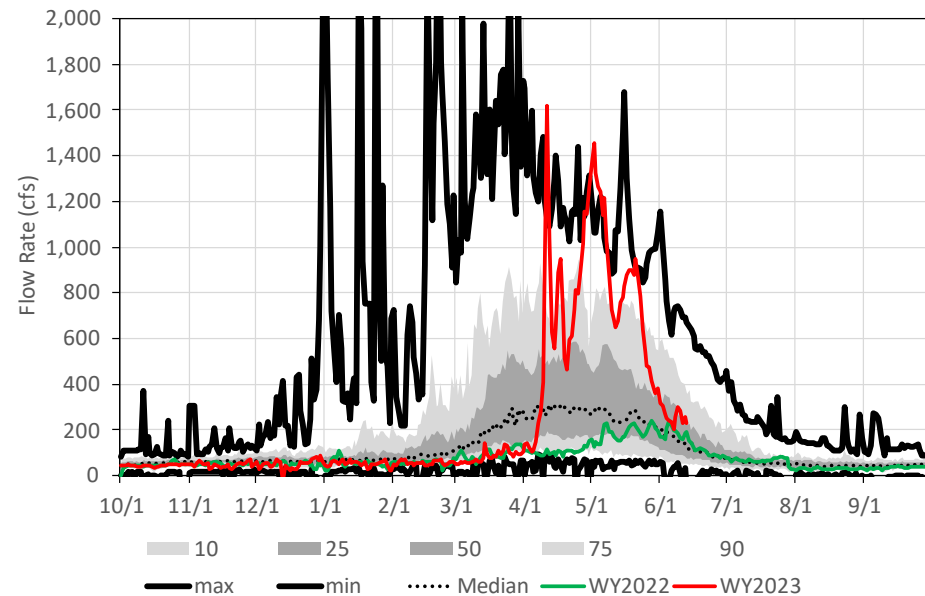
06/13/2023



Beulah Reservoir
Historical Reservoir Content
Statistics based on WY1970WY2022 Data in Reclamation Hydromet Database

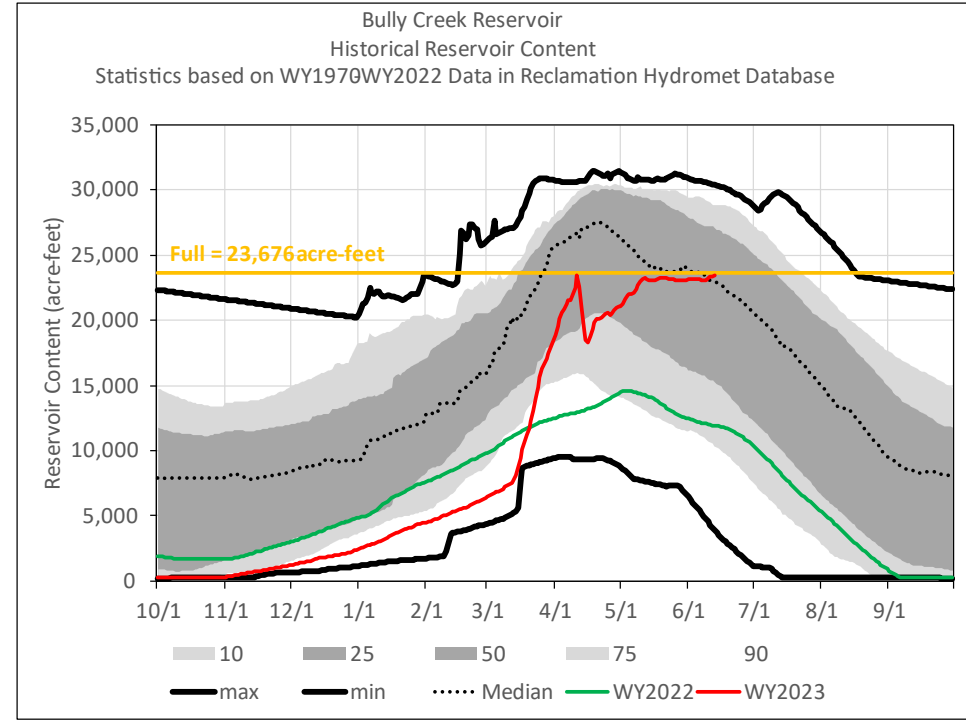
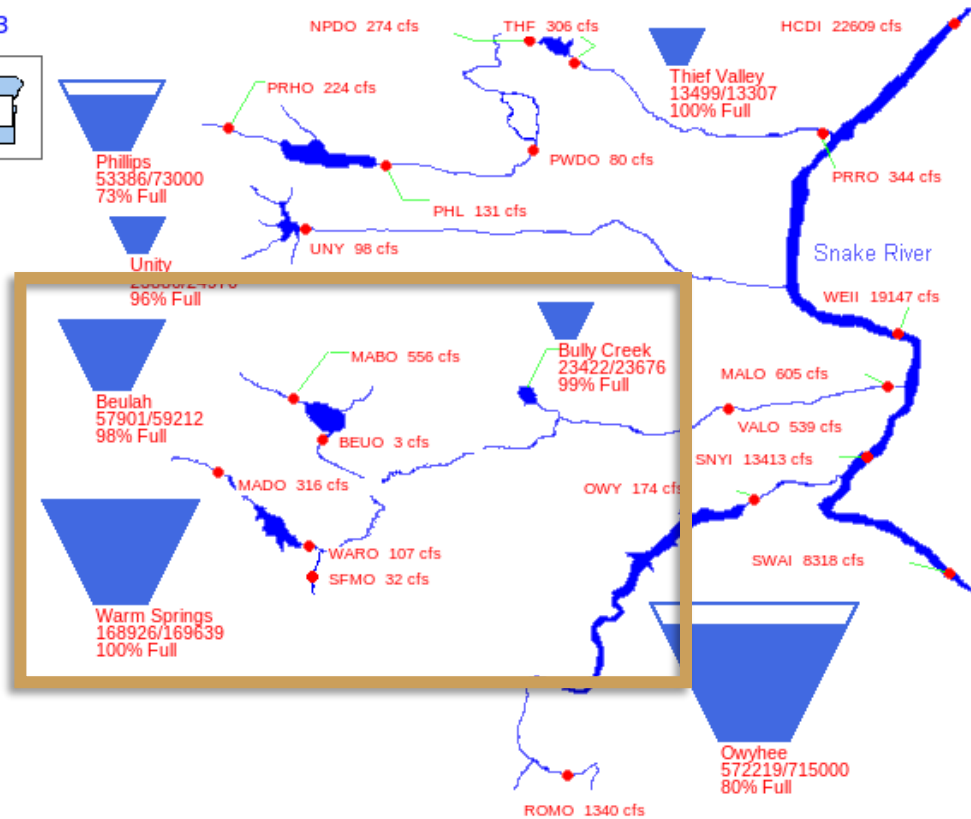
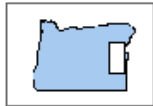


Beulah Reservoir
Historical Inflow
Statistics based on WY1970WY2022 Data in Reclamation Hydromet Database



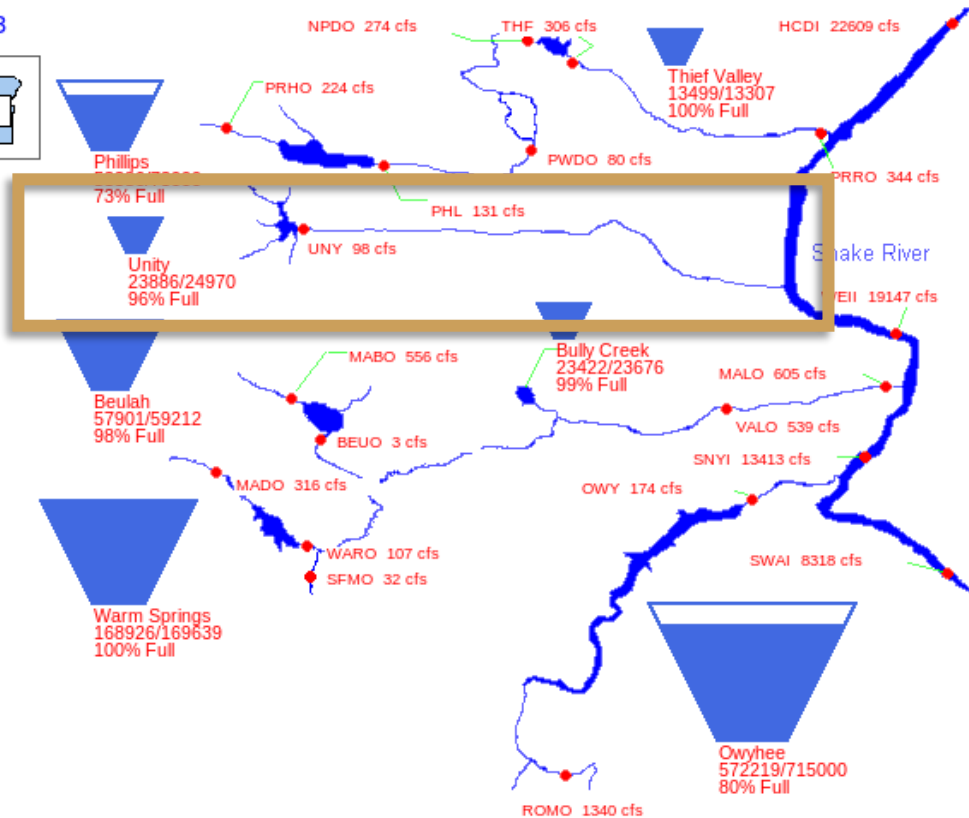
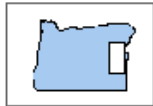
Malheur River Basin

06/13/2023

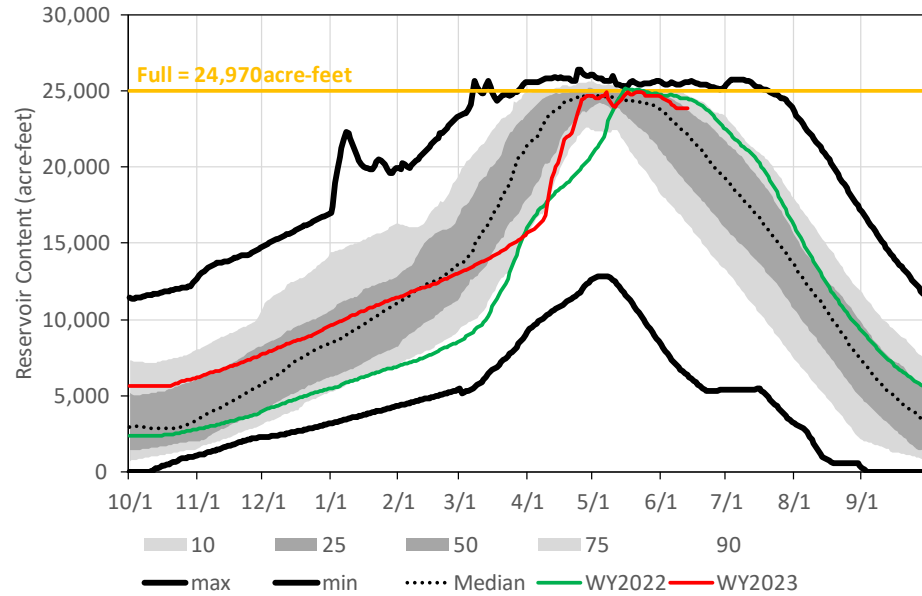


Burnt River Basin

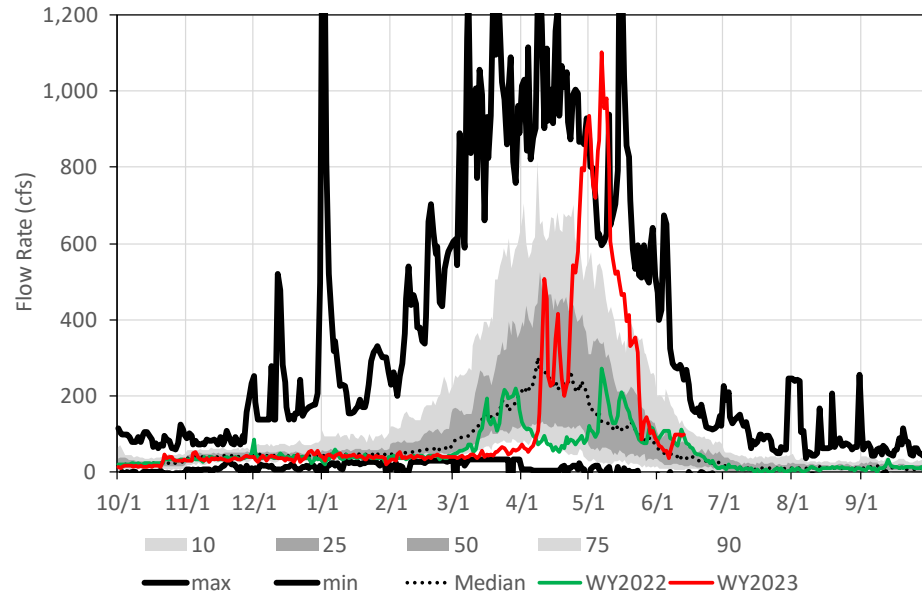
06/13/2023



Unity Reservoir
Historical Reservoir Content
Statistics based on WY1961-WY2022 Data in Reclamation Hydromet Database

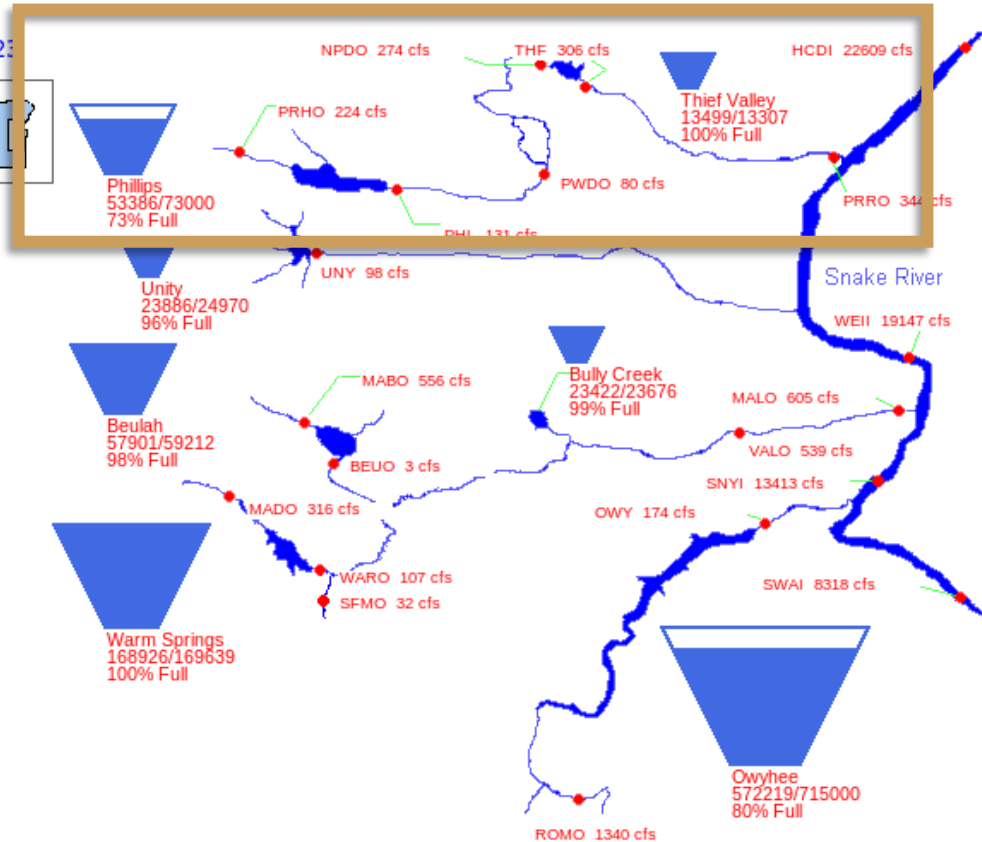


Unity Reservoir
Historical Inflow
Statistics based on WY1961-WY2022 Data in Reclamation Hydromet Database

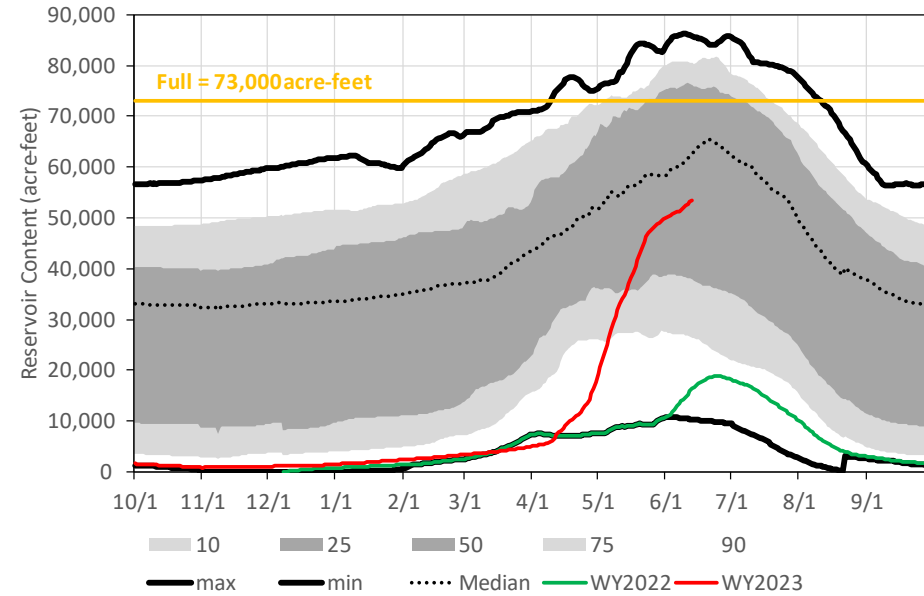


Powder River Basin

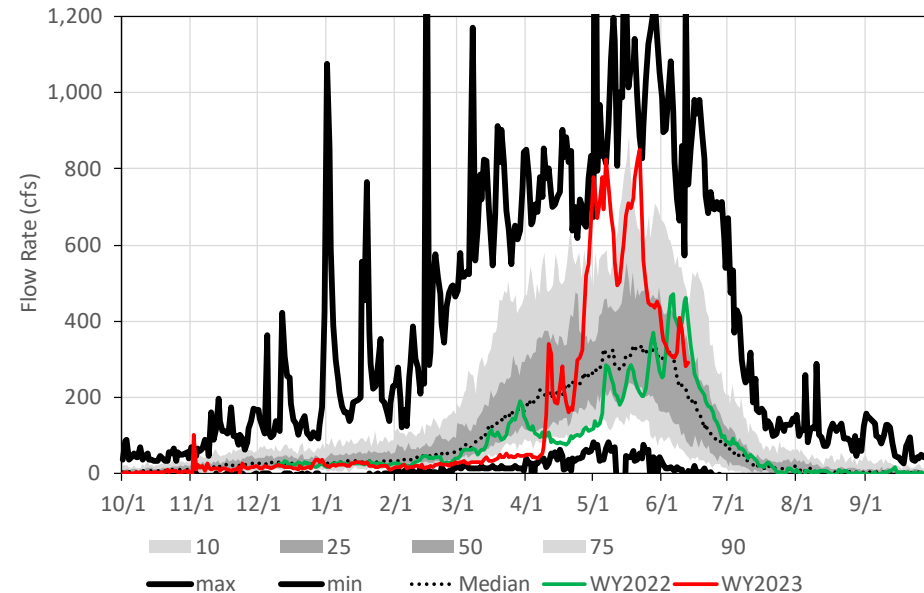
06/13/2023



Phillips Reservoir
Historical Reservoir Content
Statistics based on WY1968WY2022 Data in Reclamation Hydromet Database

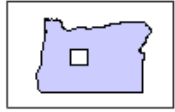


Phillips Reservoir
Historical Inflow
Statistics based on WY1968WY2022 Data in Reclamation Hydromet Database

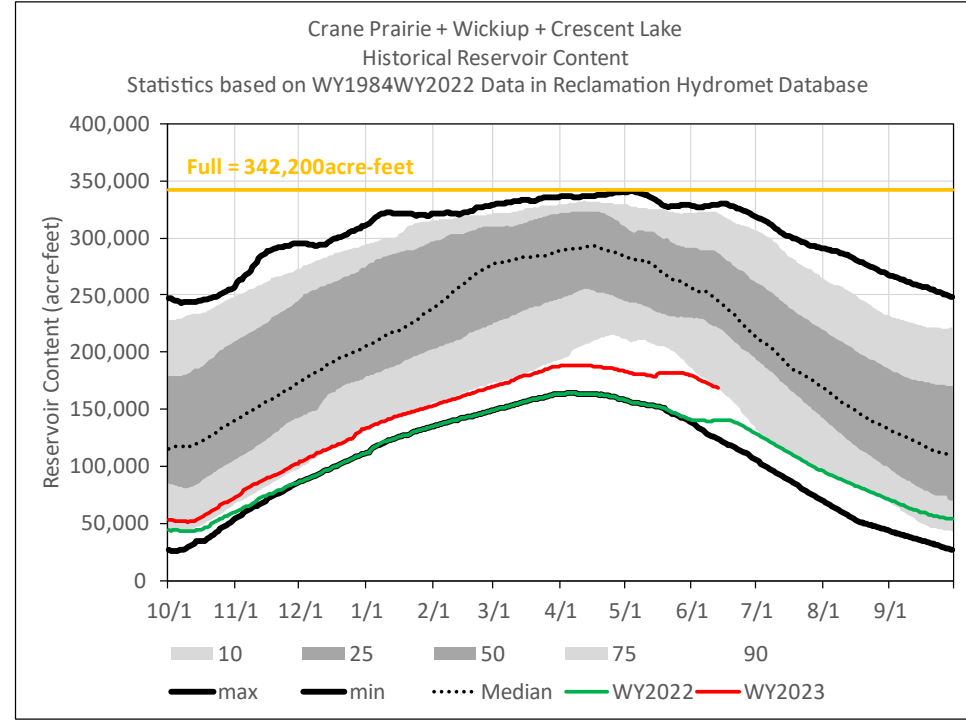
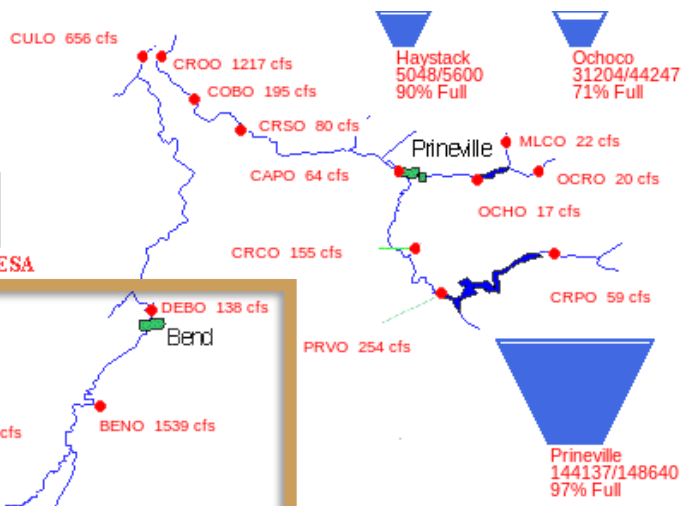
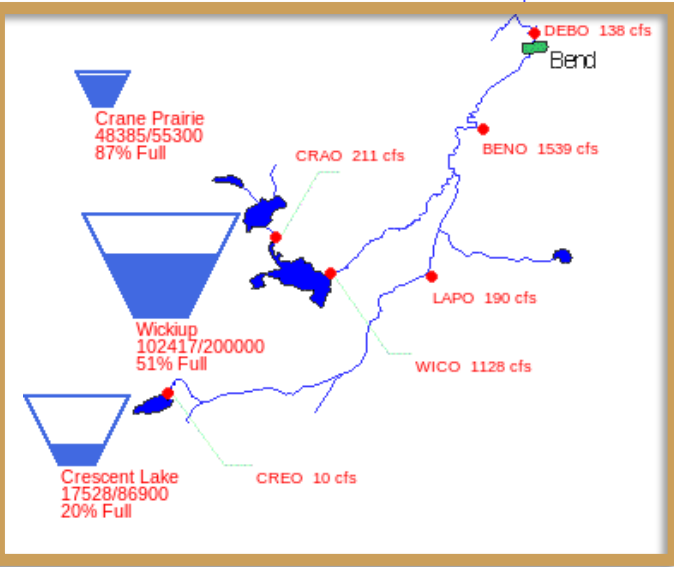


Deschutes River Basin

06/13/2023

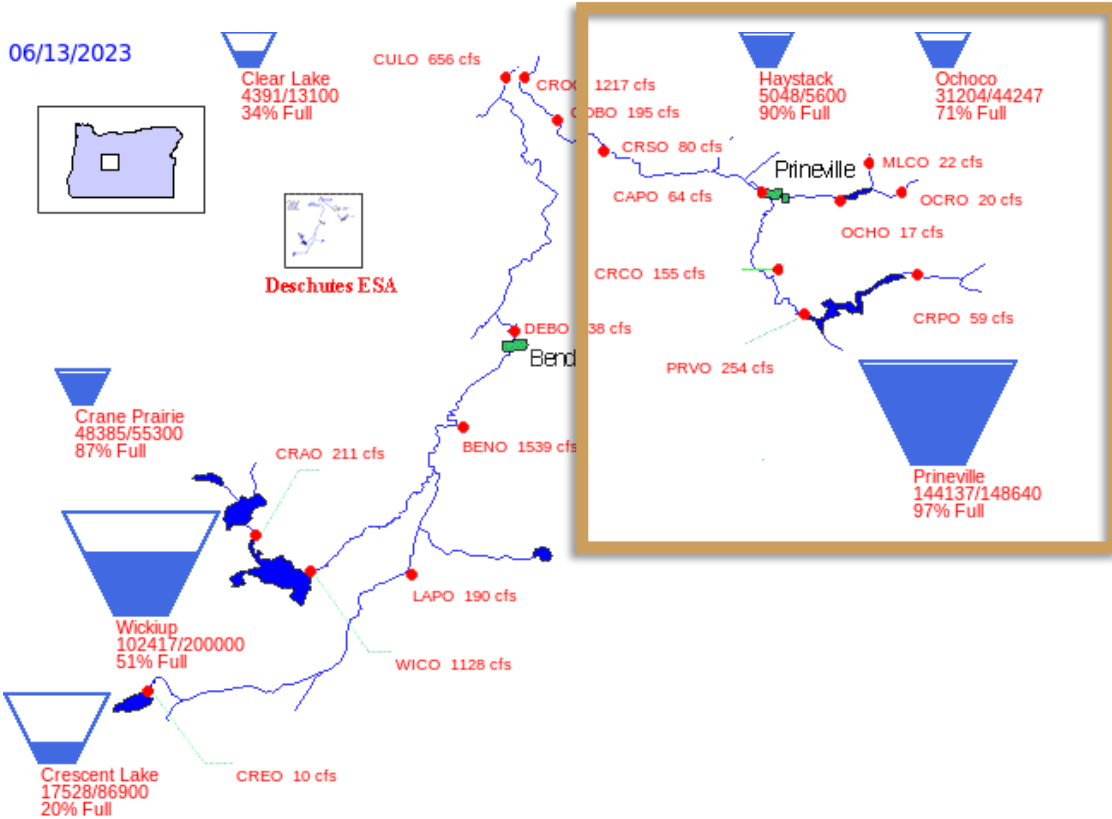


Deschutes ESA

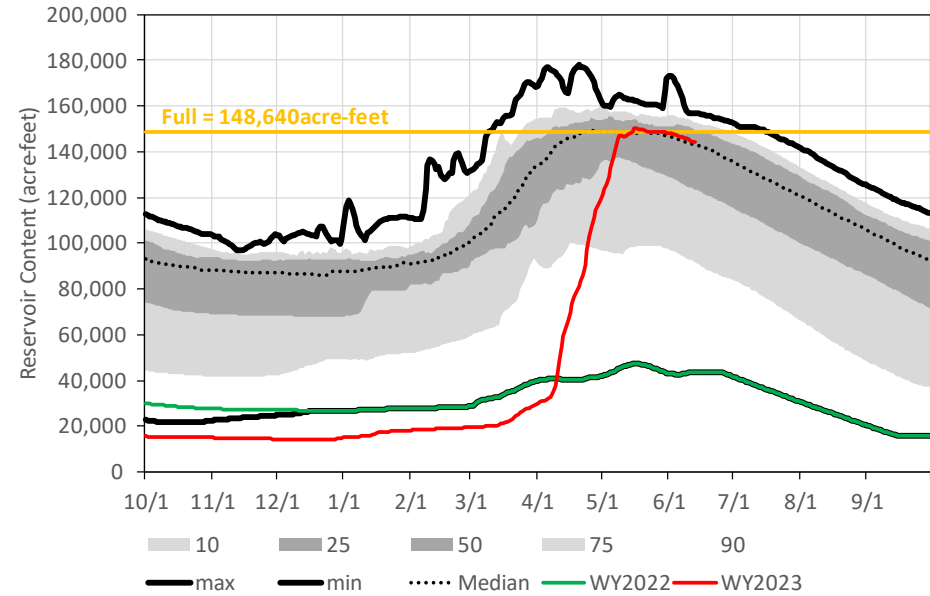


Crooked River Basin

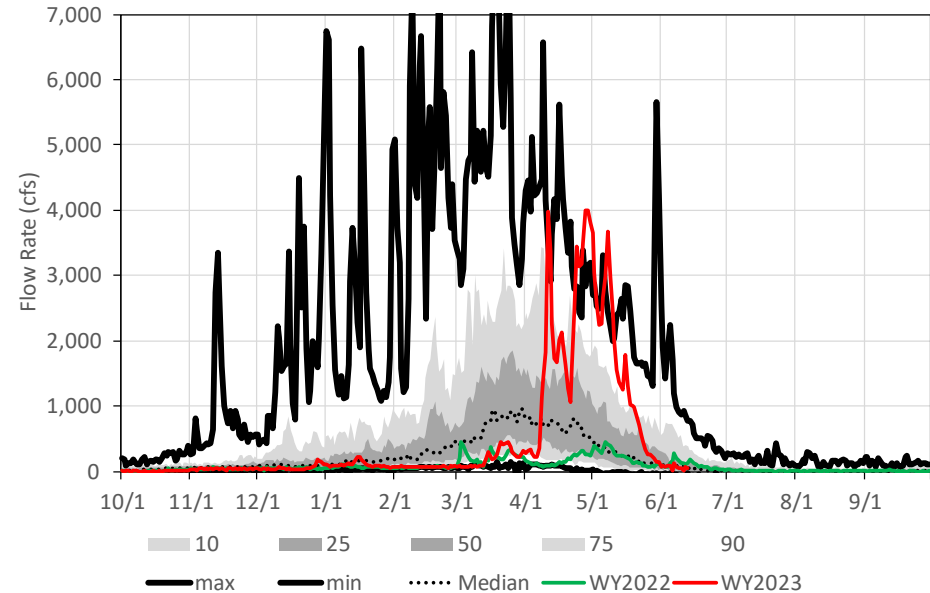
06/13/2023



Prineville Reservoir
Historical Reservoir Content
Statistics based on WY1976WY2022 Data in Reclamation Hydromet Database

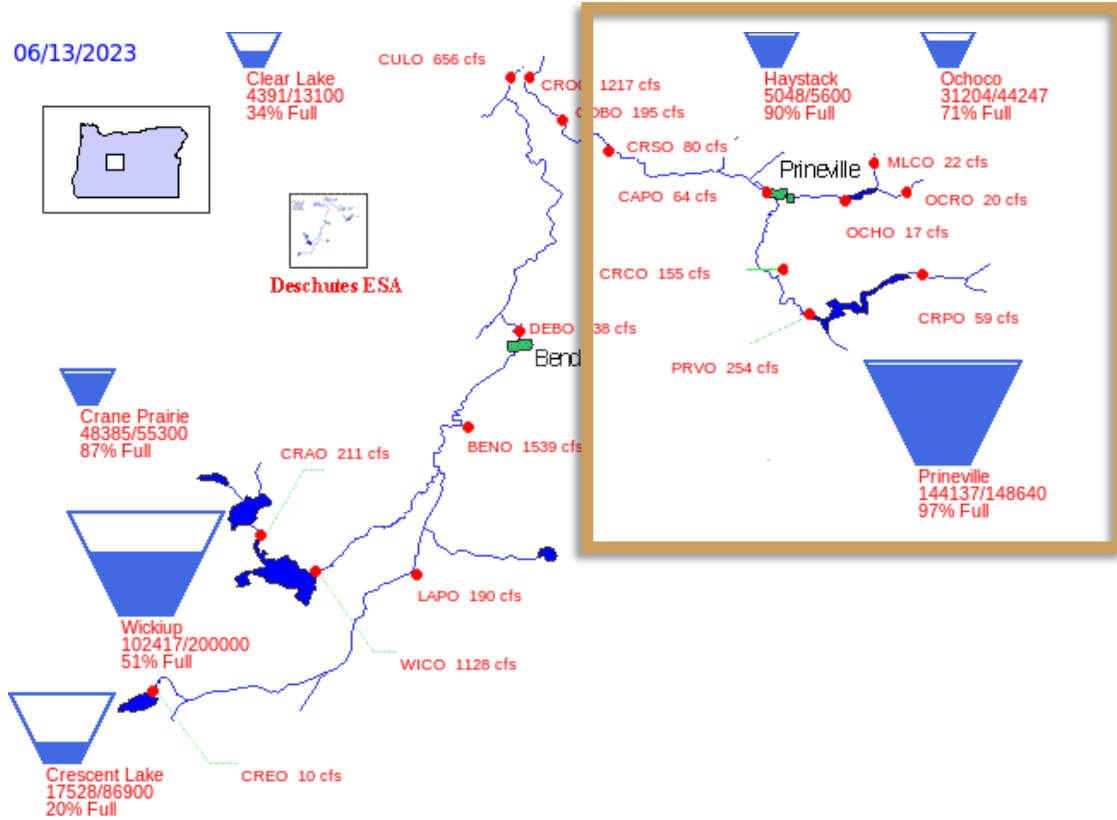


Prineville Reservoir
Historical Inflow
Statistics based on WY1976WY2022 Data in Reclamation Hydromet Database

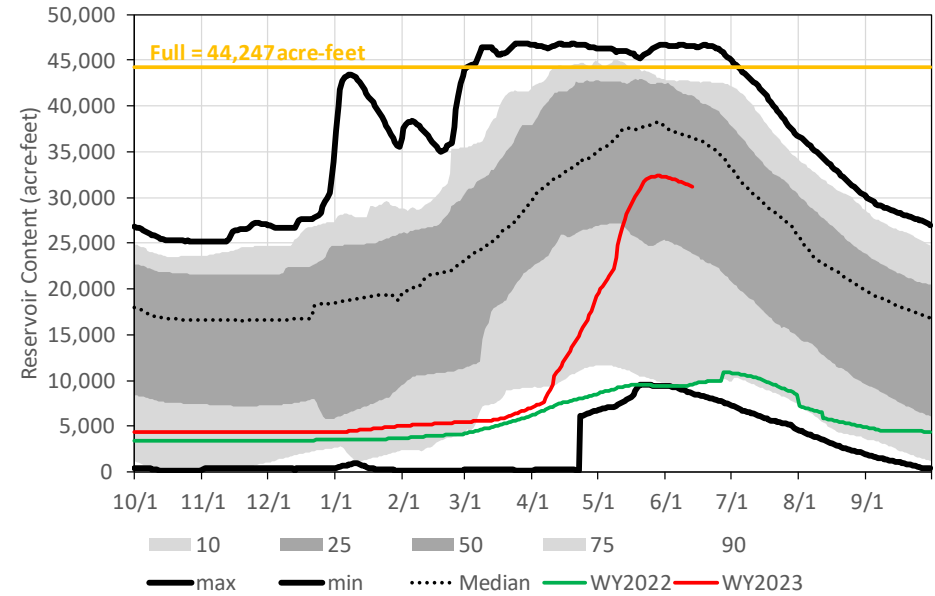


Crooked River Basin

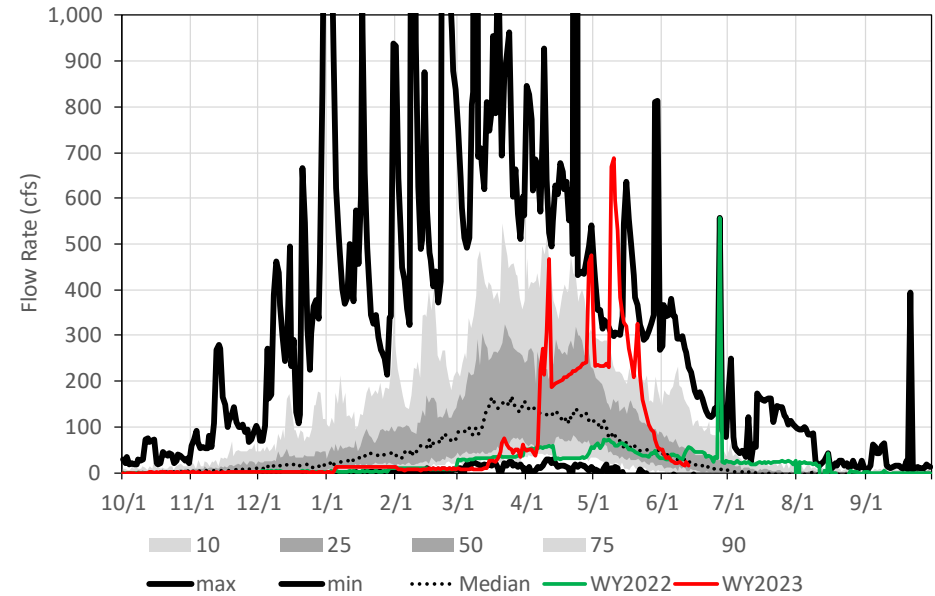
06/13/2023



Ochoco Reservoir
Historical Reservoir Content
Statistics based on WY1984WY2022 Data in Reclamation Hydromet Database

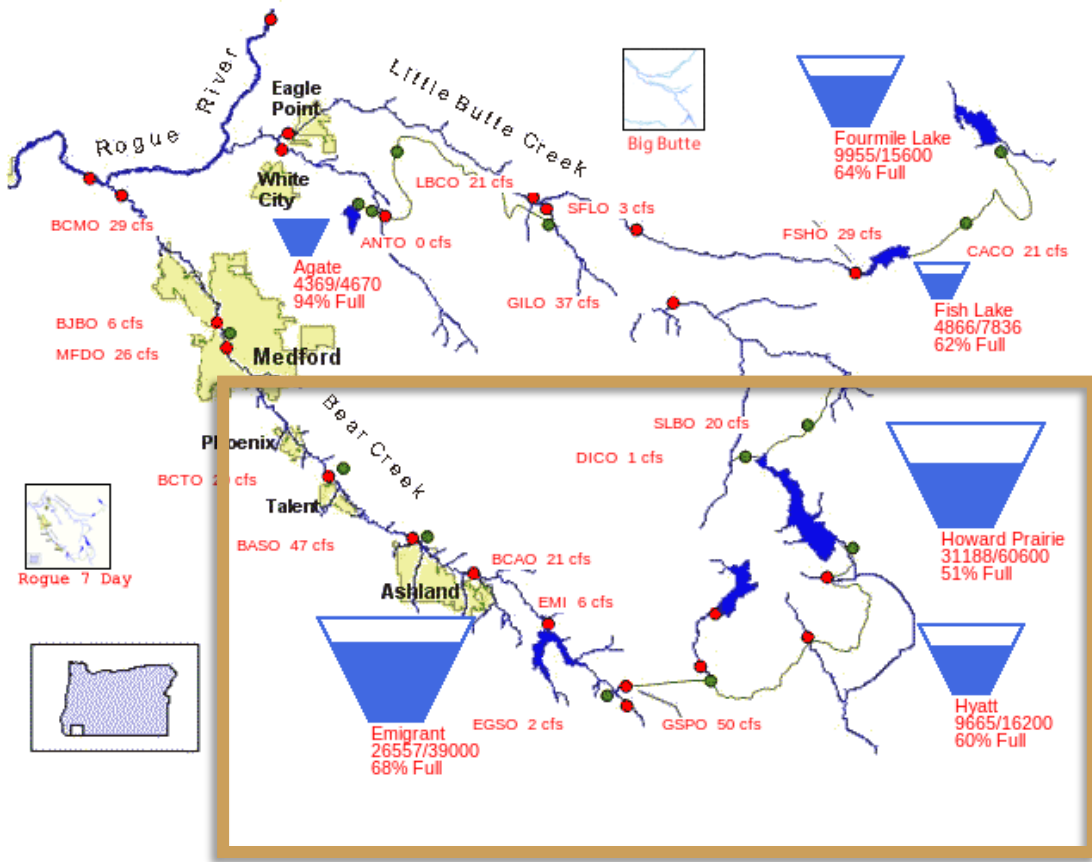


Ochoco Reservoir
Historical Inflow
Statistics based on WY1984WY2022 Data in Reclamation Hydromet Database

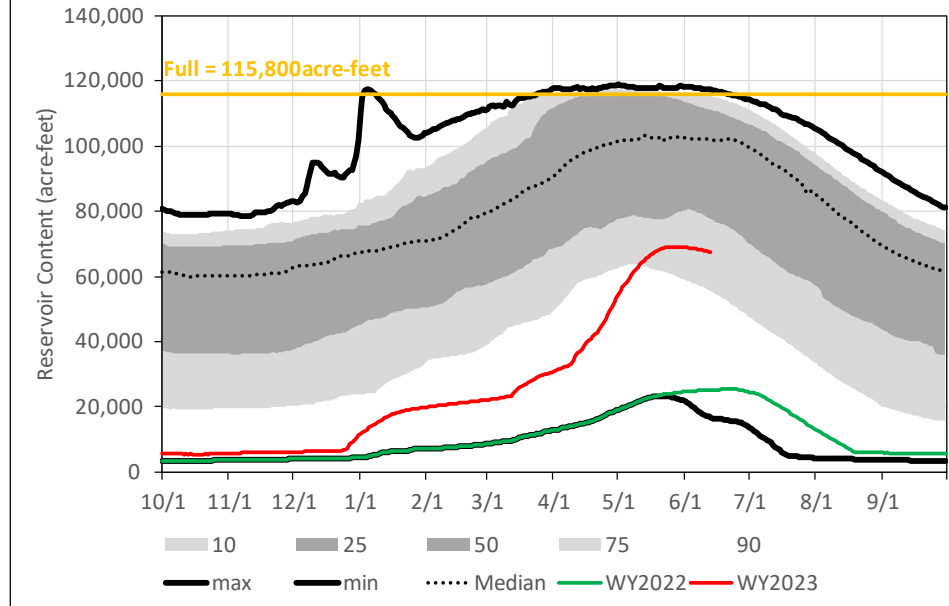


Rogue River Basin

06/13/2023

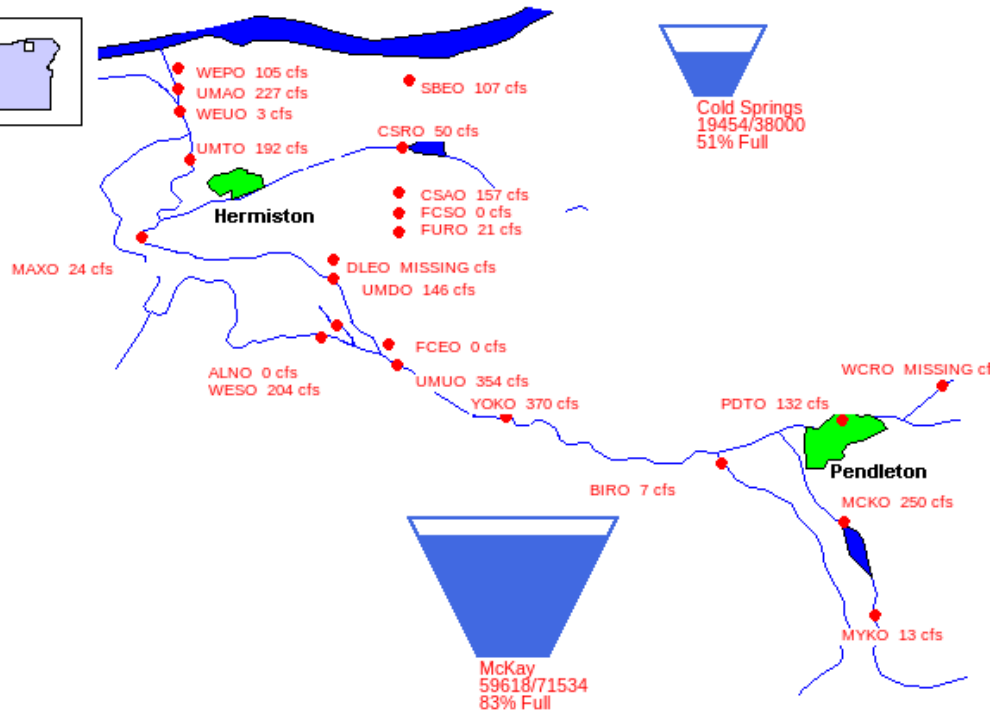
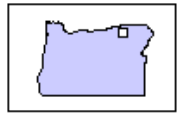


Hyatt + Howard Prairie + Emigrant Reservoirs
Historical Reservoir Content
Statistics based on WY1969WY2022 Data in Reclamation Hydromet Database

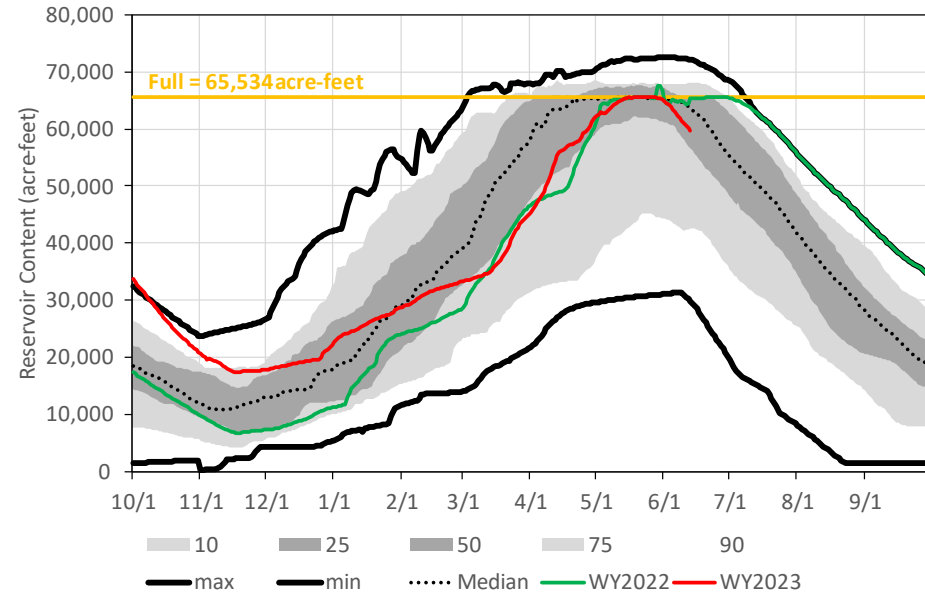


Umatilla River Basin

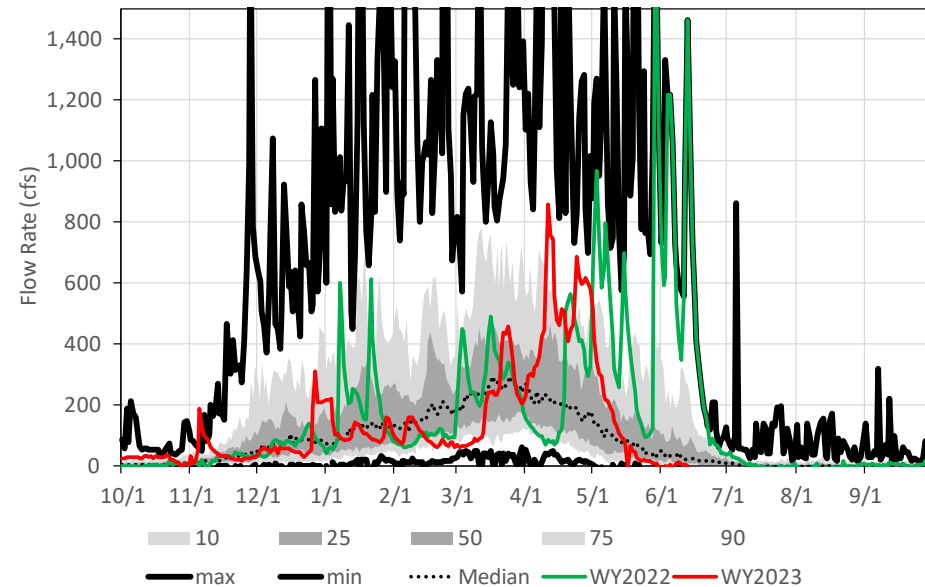
06/13/2023



McKay Reservoir
Historical Reservoir Content
Statistics based on WY1974-WY2022 Data in Reclamation Hydromet Database

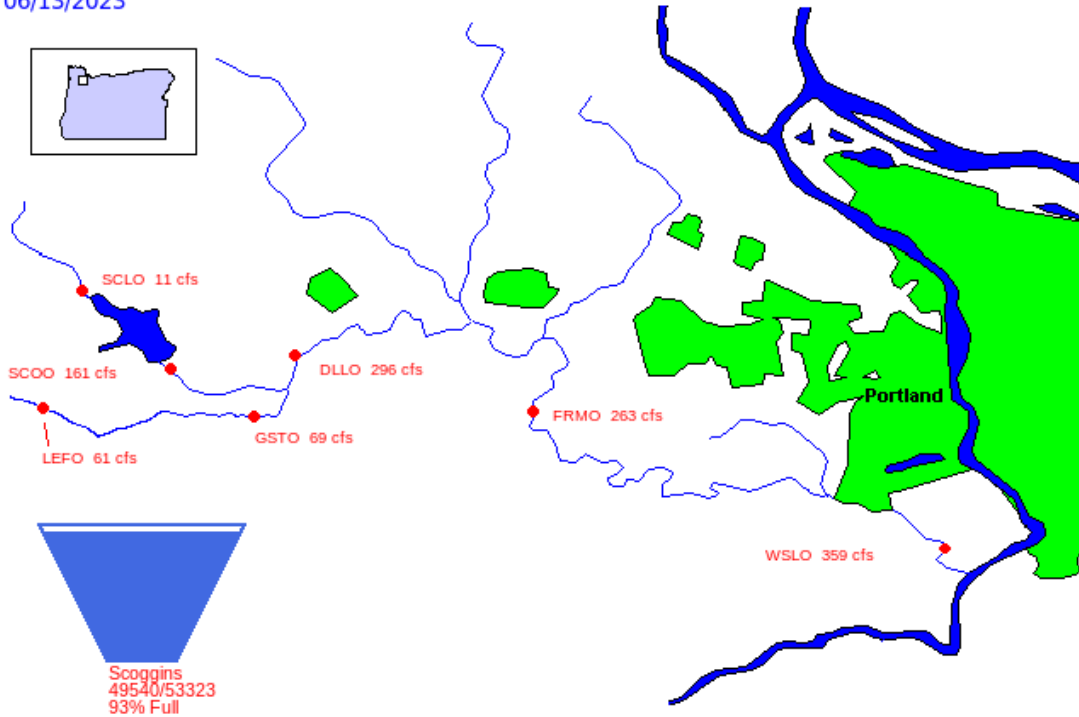


McKay Reservoir
Historical Inflow
Statistics based on WY1974-WY2022 Data in Reclamation Hydromet Database

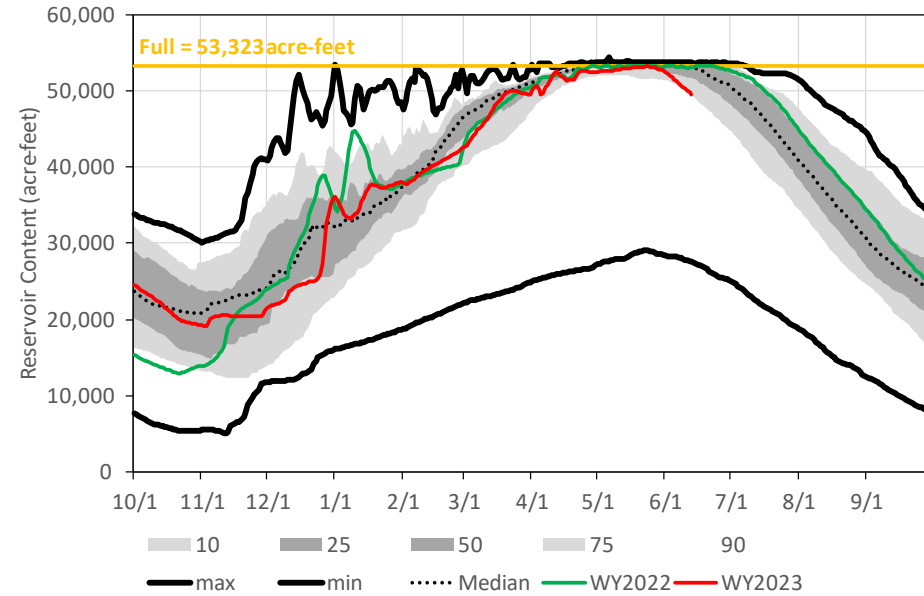


Tualatin River Basin

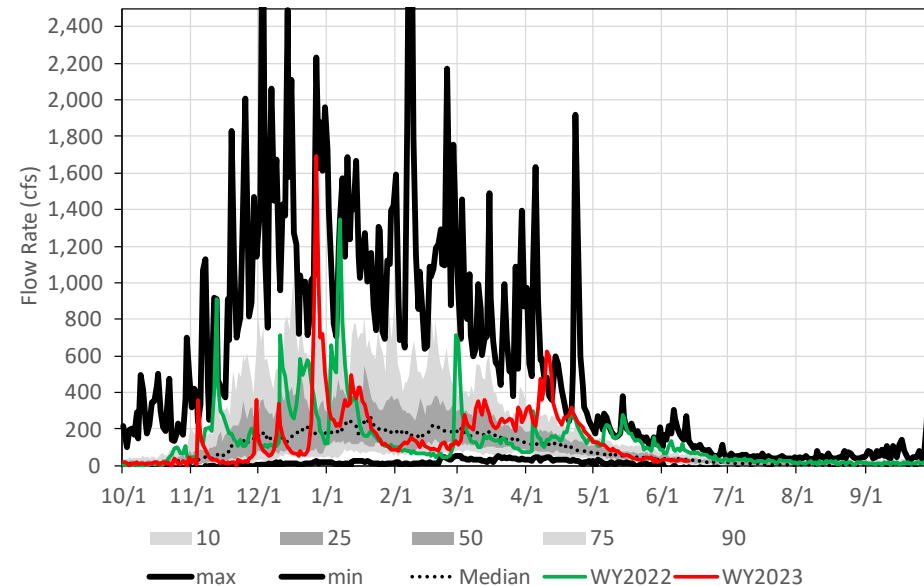
06/13/2023



Scoggins Reservoir
Historical Reservoir Content
Statistics based on WY1977WY2022 Data in Reclamation Hydromet Database



Scoggins Reservoir
Historical Inflow
Statistics based on WY1977WY2022 Data in Reclamation Hydromet Database



Peter Cooper – Columbia Pacific Northwest Regional Office

pcooper@usbr.gov

208.378.5037



— BUREAU OF —
RECLAMATION