

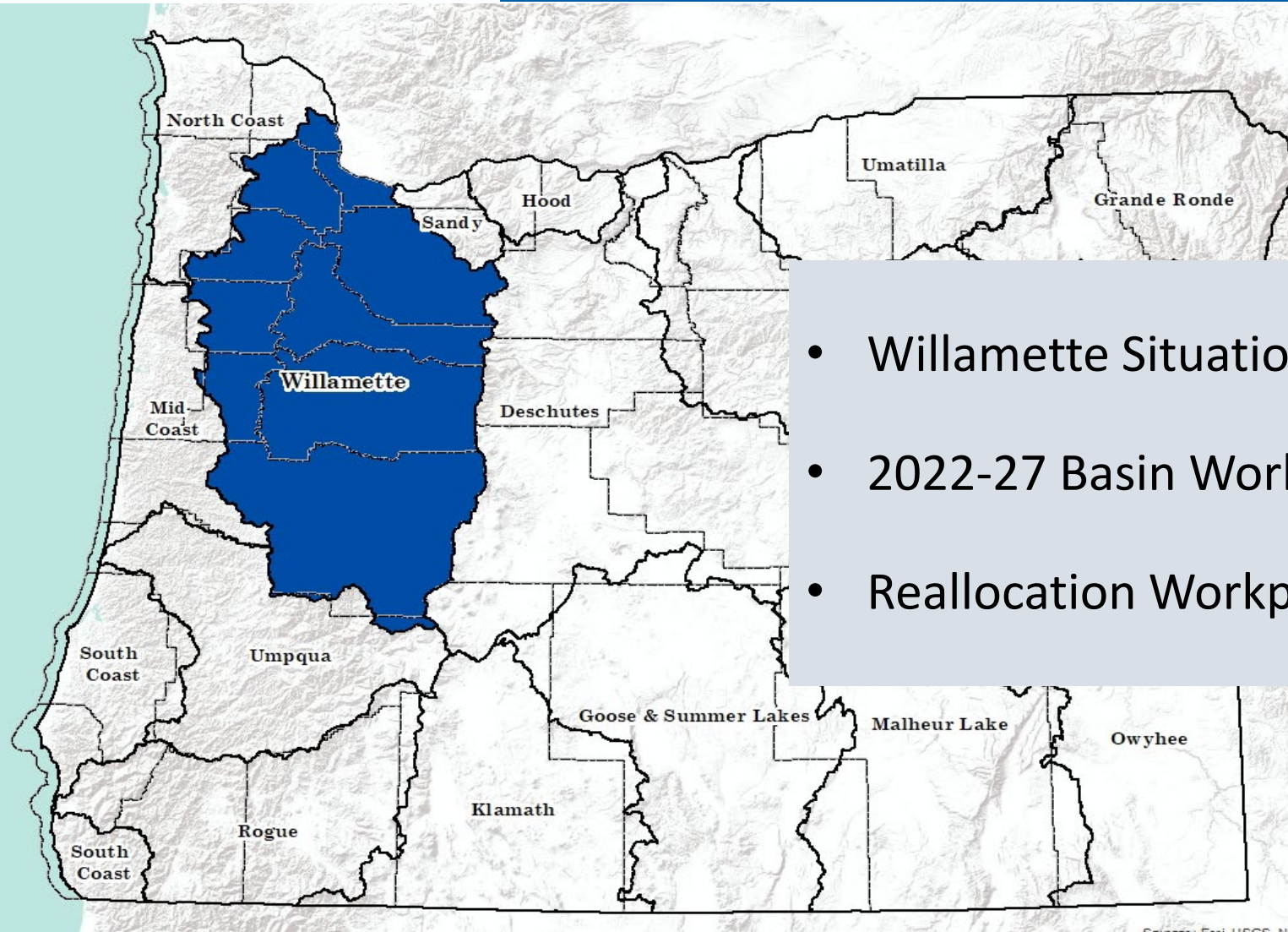


Willamette Basin Situation Assessment & Workplan

Informational Item

Alyssa Mucken
NW Region Basin Coordinator
Water Resources Commission Meeting
June 15-16, 2023

Overview



- Willamette Situation Assessment
- 2022-27 Basin Workplan
- Reallocation Workplan

The Willamette Basin



- 13th largest river in U.S.
- 70 percent of state's population
- Highly diverse agricultural region
- Several listed fish species
- Federal reservoir system

Situation Assessment



- Water challenges & priorities
- Potential solutions & partnerships
- Role of the agency
- Interviewed staff, agencies, & stakeholders
- Input used to develop five-year workplan

Situation Assessment



7

OWRD Sections and Divisions

4

State Agencies

3

Federal Agencies

25

Stakeholder Groups

- Invitations sent to federally-recognized Tribes

Situation Assessment

Key Themes from the Assessment:

- EIS & Biological Opinion
- Reallocation implementation
- Fish Passage & restoration
- Municipal & small domestic uses
- Instream water rights
- Water quality
- Hydropower
- Infrastructure funding
- Groundwater
- Irrigation challenges
- Planning
- Climate change
- Engagement & public education
- Application processes
- Water rights regulation
- Adjudication
- Monitoring



Willamette Basin Workplan 2023 – 2027

Photo: Willamette River near Eugene. Credit: Josh Ward, Creative Commons



- Prioritization criteria
- Agency management team support
- 7 projects
- 2 issue areas for further scoping
- 3 projects not recommended





Willamette Basin Workplan 2023 – 2027

Photo: Willamette River near Eugene. Credit: Josh Ward, Creative Commons

OWRD-Led Efforts:

1 Willamette Basin Review (Reallocation) Study Implementation

- Study led by U.S. Army Corps of Engineers
- Completed in 2019
- Congress approved in 2020
- Reallocated stored water to three uses



Willamette Basin Workplan 2023 – 2027

Photo: Willamette River near Eugene. Credit: Josh Ward, Creative Commons

OWRD-Led Efforts:

2 Map Process for Conversion of Minimum Perennial Streamflows

- 24 yet to be converted to instream water rights
- Call upon live flow and stored water
- Contract needed between State and owner of reservoir

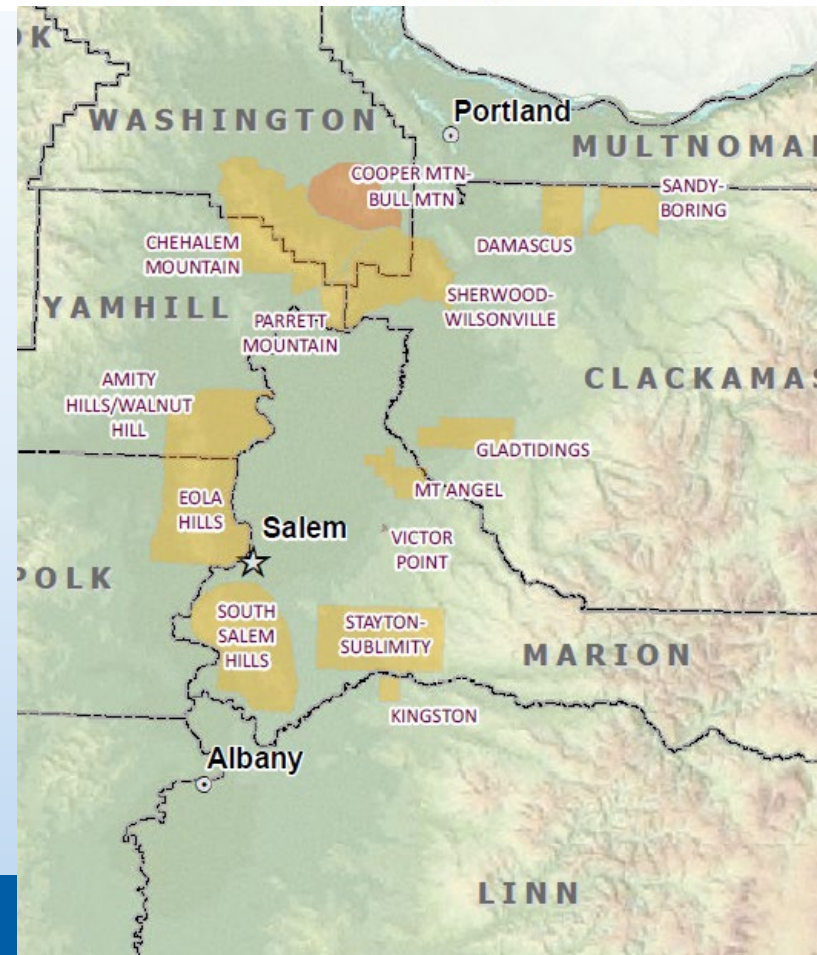


Willamette Basin Workplan 2023 – 2027

OWRD-Led Efforts:

- 3** Five-Year Groundwater Permits
 - Small project to define process
 - Process renewals as a batch

Photo: Willamette River near Eugene. Credit: Josh Ward, Creative Commons





Willamette Basin Workplan 2023 – 2027

Photo: Willamette River near Eugene. Credit: Josh Ward, Creative Commons

Supporting Partner-Led Efforts:

- 1** Willamette Programmatic EIS & Biological Opinion
 - Led by U.S. Army Corps of Engineers
 - Cooperating agency status
 - Final EIS and new Biological Opinion planned for June 2024



Willamette Basin Workplan 2023 – 2027

Photo: Willamette River near Eugene. Credit: Josh Ward, Creative Commons

Supporting Partner-Led Efforts:

2 Willamette Integrated Water Availability Assessment

- Led by U.S. Geological Survey
- 10-year study (planning in 2023)
- Focus: human needs and maintaining ecological sustainability
- Measurement and monitoring

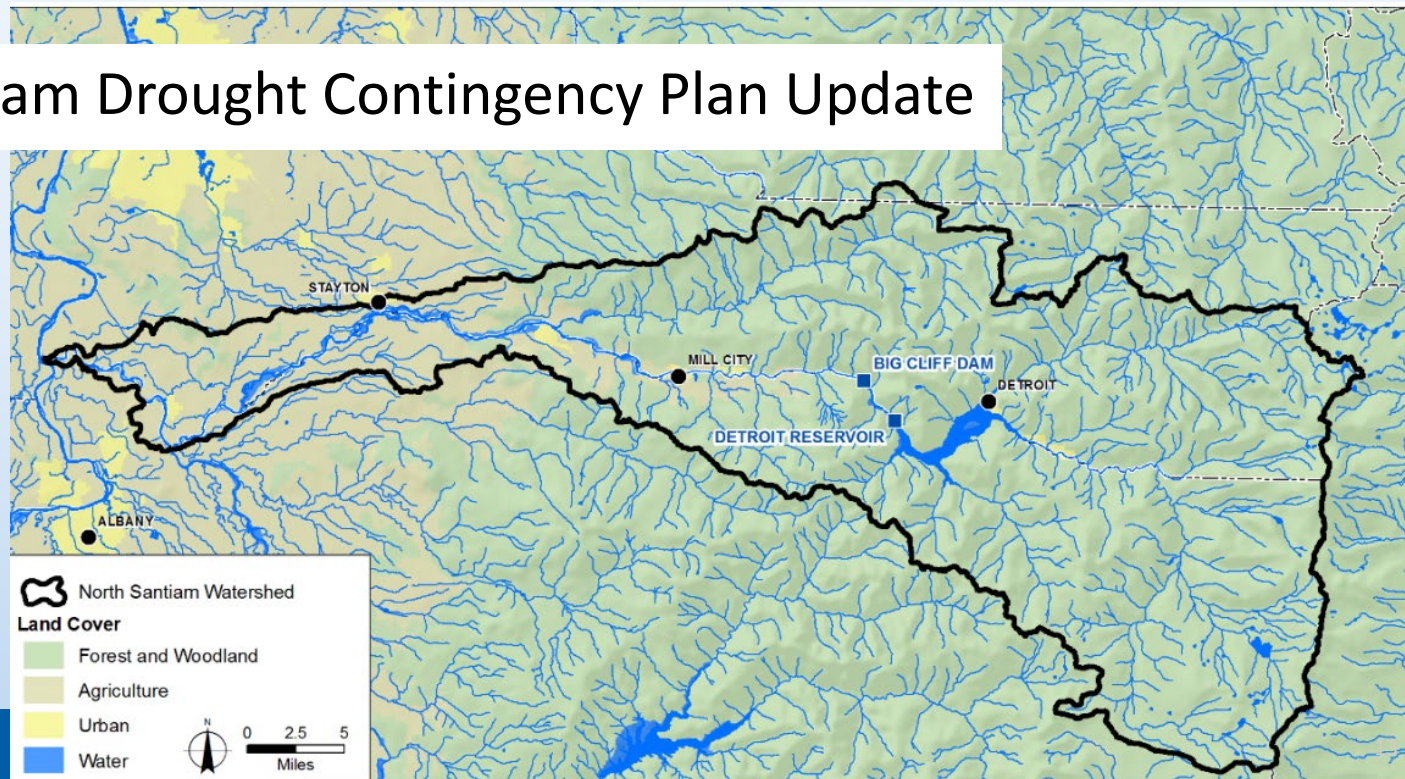


Willamette Basin Workplan 2023 – 2027

Photo: Willamette River near Eugene. Credit: Josh Ward, Creative Commons

Supporting Partner-Led Efforts:

3 North Santiam Drought Contingency Plan Update



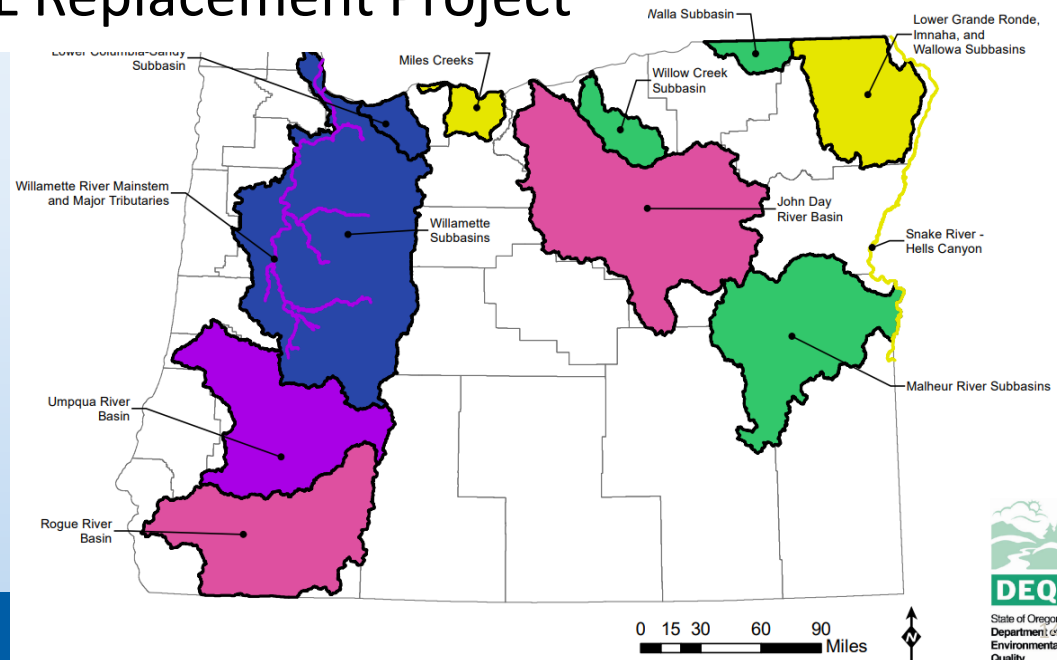


Willamette Basin Workplan 2023 – 2027

Photo: Willamette River near Eugene. Credit: Josh Ward, Creative Commons

Supporting Partner-Led Efforts:

4 DEQ's Temperature TMDL Replacement Project





Willamette Basin Workplan 2023 – 2027

Photo: Willamette River near Eugene. Credit: Josh Ward, Creative Commons

Further Scoping Needed:

- 1** Vulnerable Small Drinking Water Systems
- 2** Water and Land-Use Development



Willamette Basin Workplan 2023 – 2027

Photo: Willamette River near Eugene. Credit: Josh Ward, Creative Commons

Projects **NOT** Recommended for Further Work:

- 1 Willamette Adjudication
- 2 Review Groundwater Limited/Restricted Areas
- 3 Update Willamette Basin Program Rules



Willamette Basin Review Reallocation Study Implementation Workplan: 2023-2027

Table 1: Reallocation Amounts approved by Congress

Allocation Uses	Volume (Acre-Feet)	Percentage of Total
Fish and Wildlife (F&W)	1,102,600	69 %
Agricultural Irrigation (AI)	327,650	21 %
Municipal and Industrial (M&I)	159,750	10 %
Total:	1,590,000	100 %



US Army Corps of Engineers
Portland District



- Dams**
- With Hydropower
- Without Hydropower
- R - Regulating
- Fish Facilities**
- △ Adult Collection
- Hatchery





Willamette Basin Review Reallocation Study Implementation Workplan: 2023-2027

Initial Milestones

1	Convene an implementation workgroup
2	Submit transfer application to modify storage rights
3	Develop a process for requesting municipal and industrial water supply contracts

Key Agency Partners:



US Army Corps of Engineers®





Willamette Basin Review Reallocation Study Implementation Workplan: 2023-2027

Other Implementation Tasks:

- Map the process for conversion of minimum perennial streamflows
- Address water management questions
- Apply for and process new secondary water right applications
- Develop a monitoring strategy
- Update water control manuals and drought plans

Any Questions or Comments?

OREGON



WATER RESOURCES
DEPARTMENT

Alyssa Mucken

NW Region Basin Coordinator

alyssa.m.mucken@water.oregon.gov

503-871-6964