

OREGON



WATER RESOURCES
DEPARTMENT

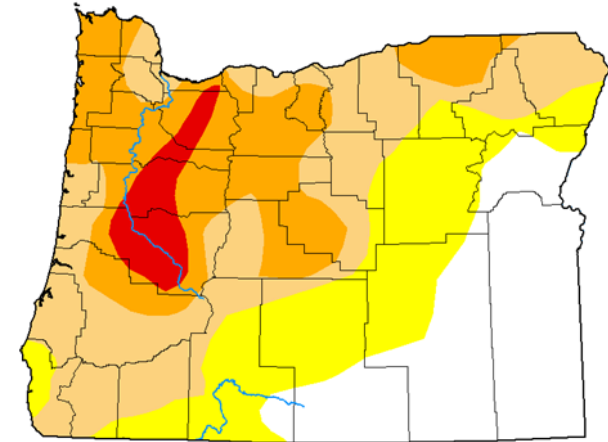
Drought Status Update

Cameron Greenwood

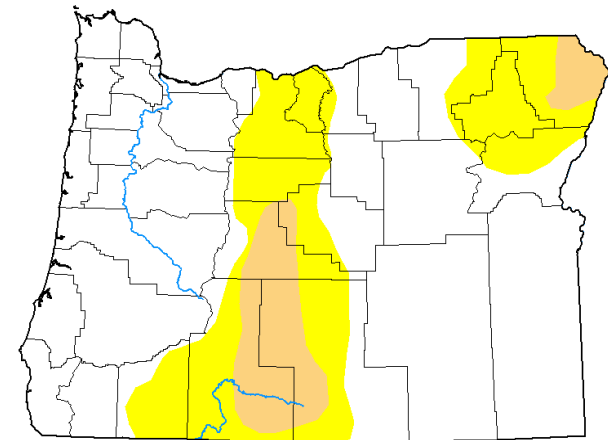
Hydrologist

Drought Status Update

- WY 2024 began with over 53% of OR in D1 to D3.
- Late onset of seasonal snow accumulation.
- Atmospheric rivers and large snow events alleviated drought conditions.
- Currently over 8% of OR is in D1.



March 19, 2024



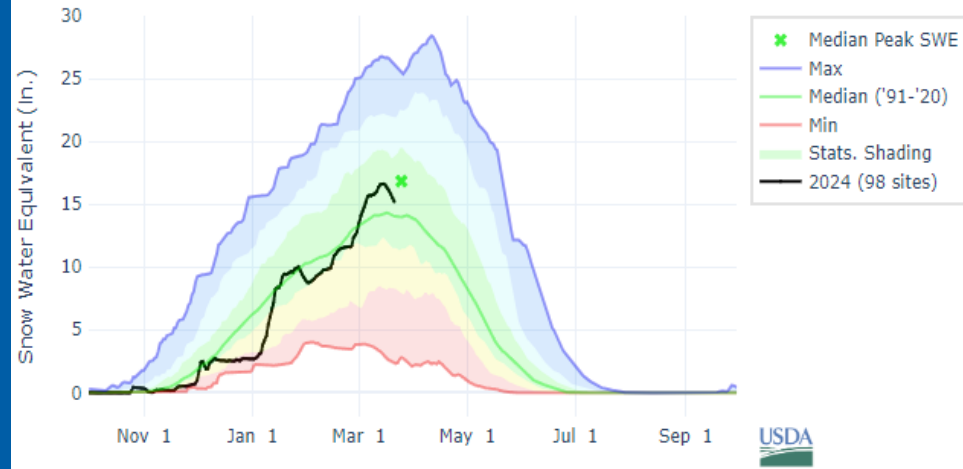
Intensity:



Drivers of Current Conditions

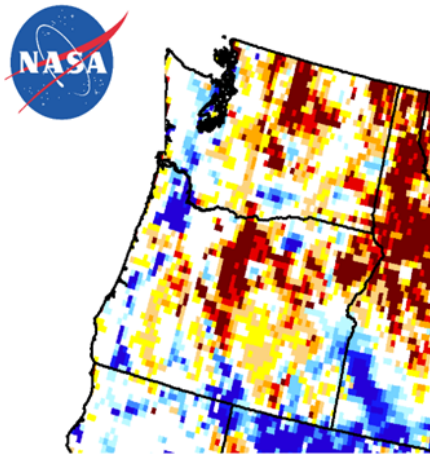
- The state has received near to above-average snowpack and precipitation, leading to near to above average streamflow conditions.
- Long-term soil moisture deficits are causing persistent drought signals in NE and central OR.

SNOW WATER EQUIVALENT IN STATE OF OREGON



GRACE-Based Shallow Groundwater Drought Indicator

March, 18 2024



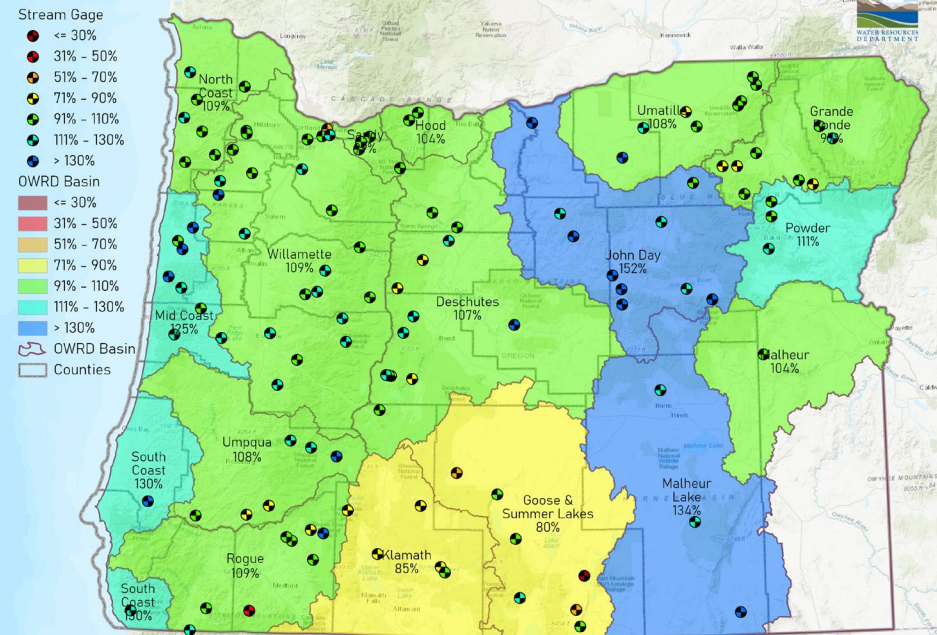
Wetness percentiles are relative to the period 1948-2012

Cell Resolution 0.125 degrees

Projection of this document is Lambert Azimuthal Equal Area



Water Year To Date % of Average Streamflow - March 20, 2024



Date: 3/21/2024

Future Conditions



- Spring and summer water supplies are dependent on the timing and rate of melt out.
- Precipitation amounts have been inadequate to relieve long-term soil moisture deficits.

OREGON



WATER RESOURCES
DEPARTMENT

Thank you!

Questions?