

**O R E G O N**



**WATER RESOURCES  
D E P A R T M E N T**

# **Item J - Critical Groundwater Area Review**

**Oregon Water Resources Commission**

**June 14, 2024**

**Justin Iverson  
Groundwater Section Manager**

- Groundwater Administrative Areas in General
  - Periodic review
  - CGWAs in context
- Two examples:
  - Cooper – Bull Mountain
  - Butter Creek



## Review of CGWAs under ORS 537.780(3)







At least once every three years the commission shall review any rule... that restricts groundwater use in an area.

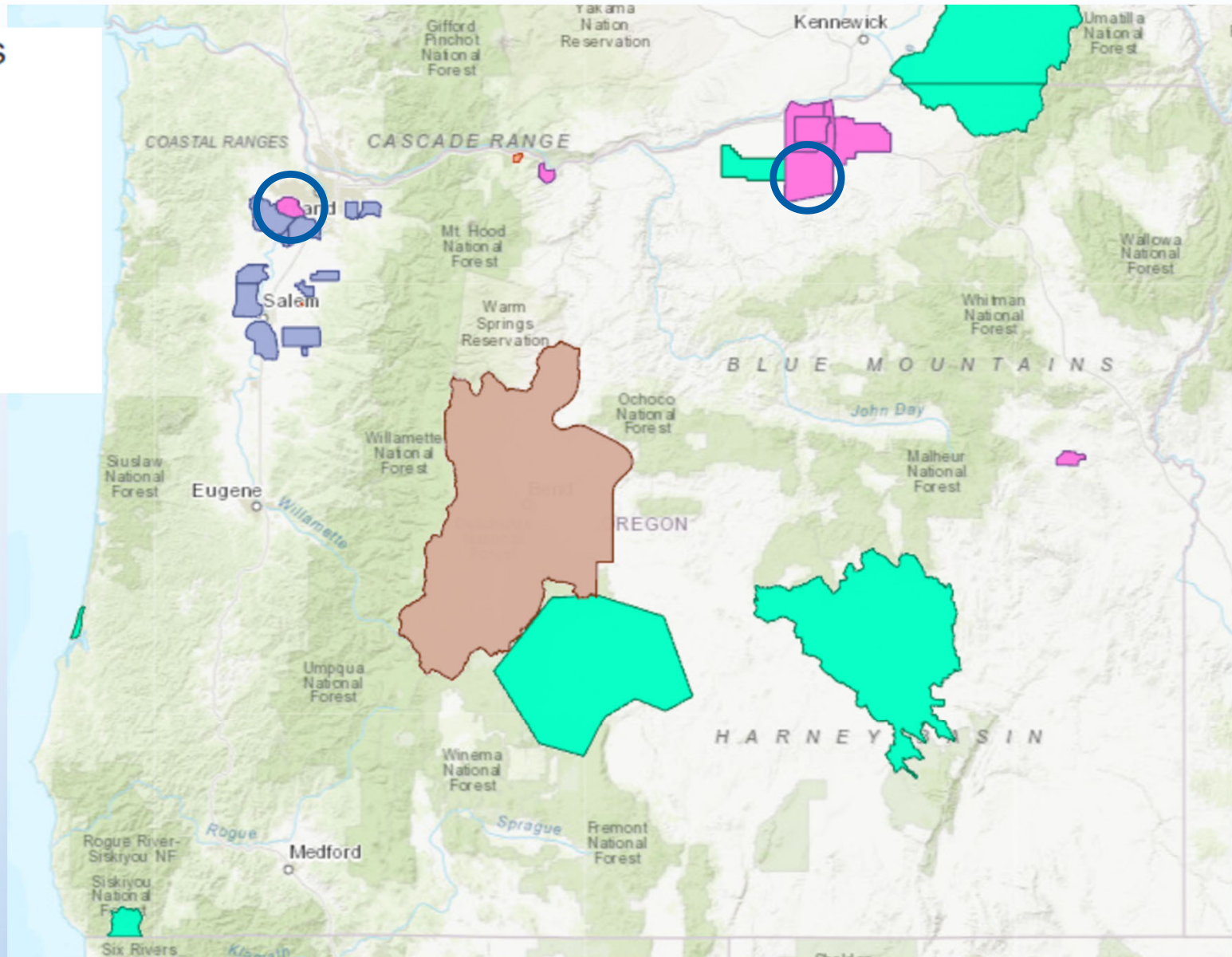
The review process shall include public notice and an opportunity to comment on the rule.

# GW Administrative Areas

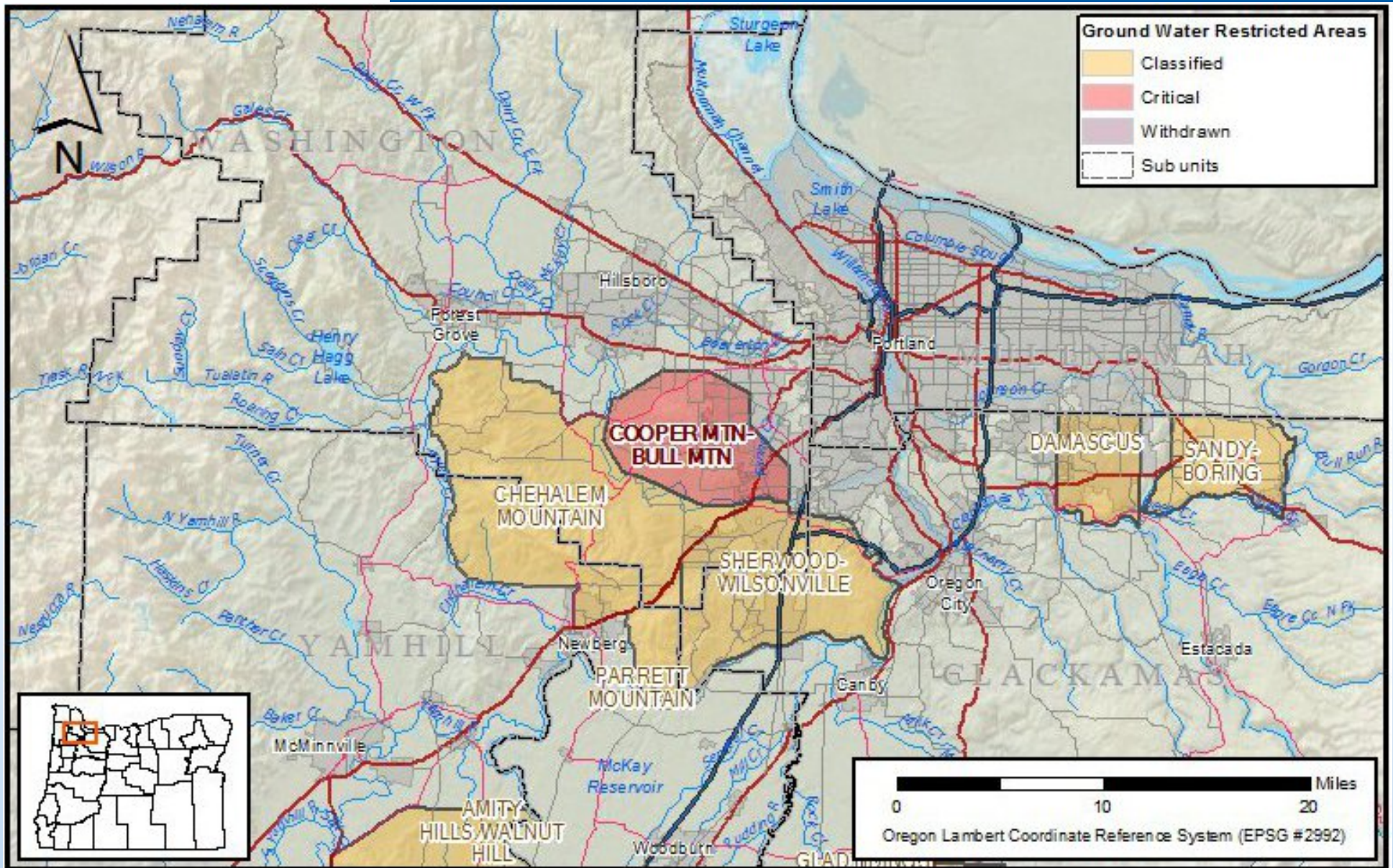
Management Tool	What It Does
Groundwater Mitigation Area	Requires mitigation for new uses; may limit new uses
Classification of Water (incl. Groundwater Limited Areas)	Limits new allocation of water
Serious Water Management Problem Area	Requires measuring devices and water use reporting
Critical Groundwater Area	May reduce and redistribute groundwater use

# GW Administrative Areas

-  GW Restricted Areas
-  Classified
-  Critical
-  Groundwater Mitigation
-  Limited
-  Withdrawn



# Cooper-Bull Mtn. CGWA



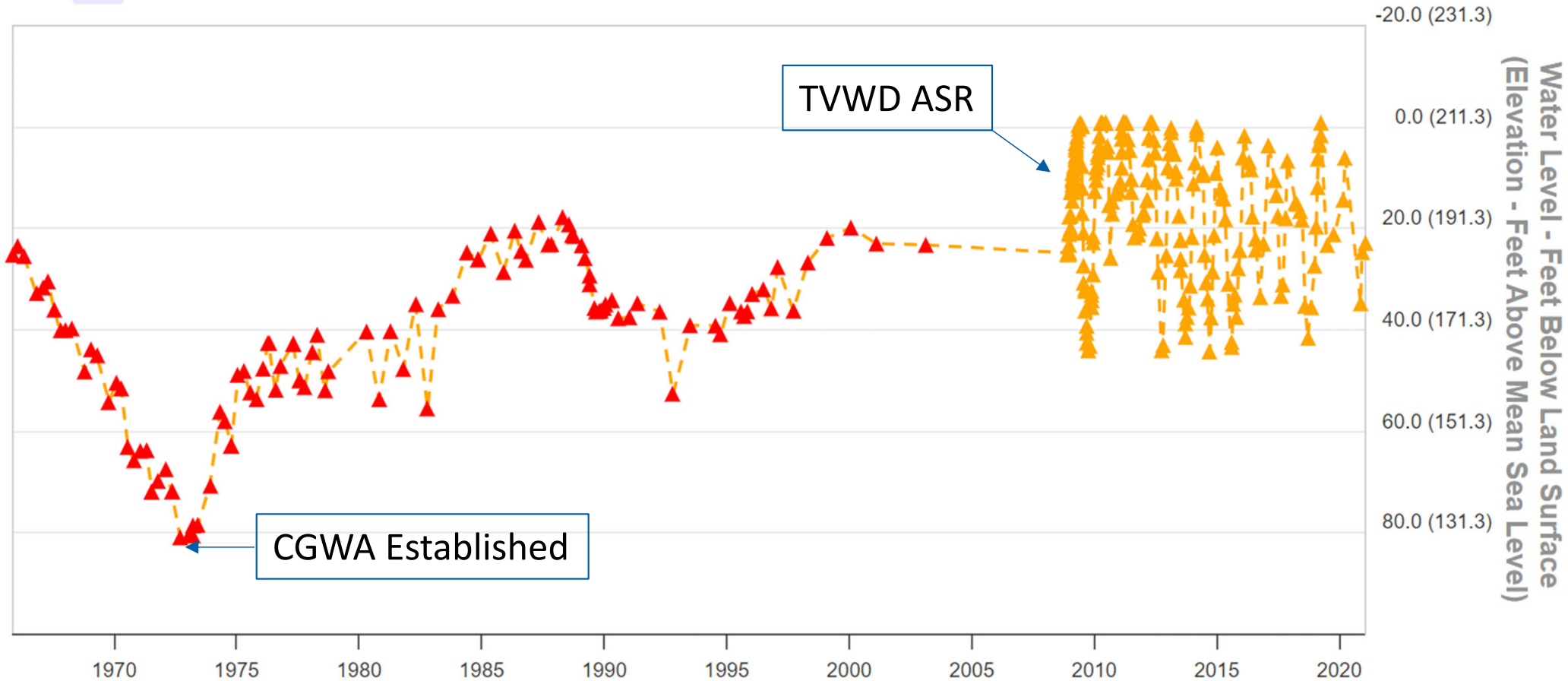
# Cooper-Bull Mtn. CGWA

Groundwater Levels for WASH 10143

Zoom

All

2 Nov 1965 → 13 Jan 2021

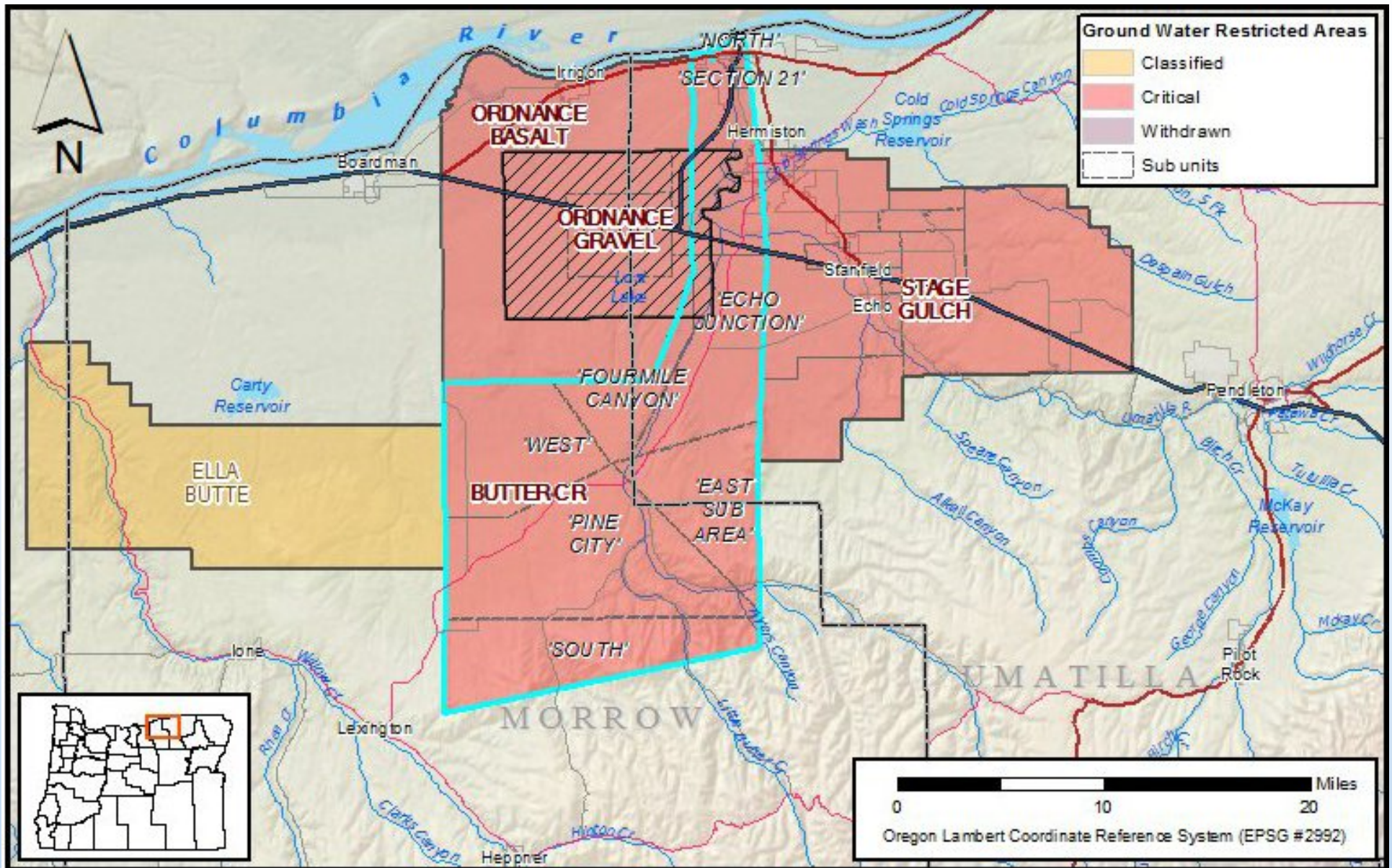


# Cooper-Bull Mtn. CGWA

- Authorized water rights are in excess of sustainable yield, but are largely unused.
- Municipal users reduced groundwater use by developing pipelines to import surface water supplies.
- Aquifer Storage and Recovery projects have restored winter water levels to artesian conditions and helps cities meet peak summer demands.



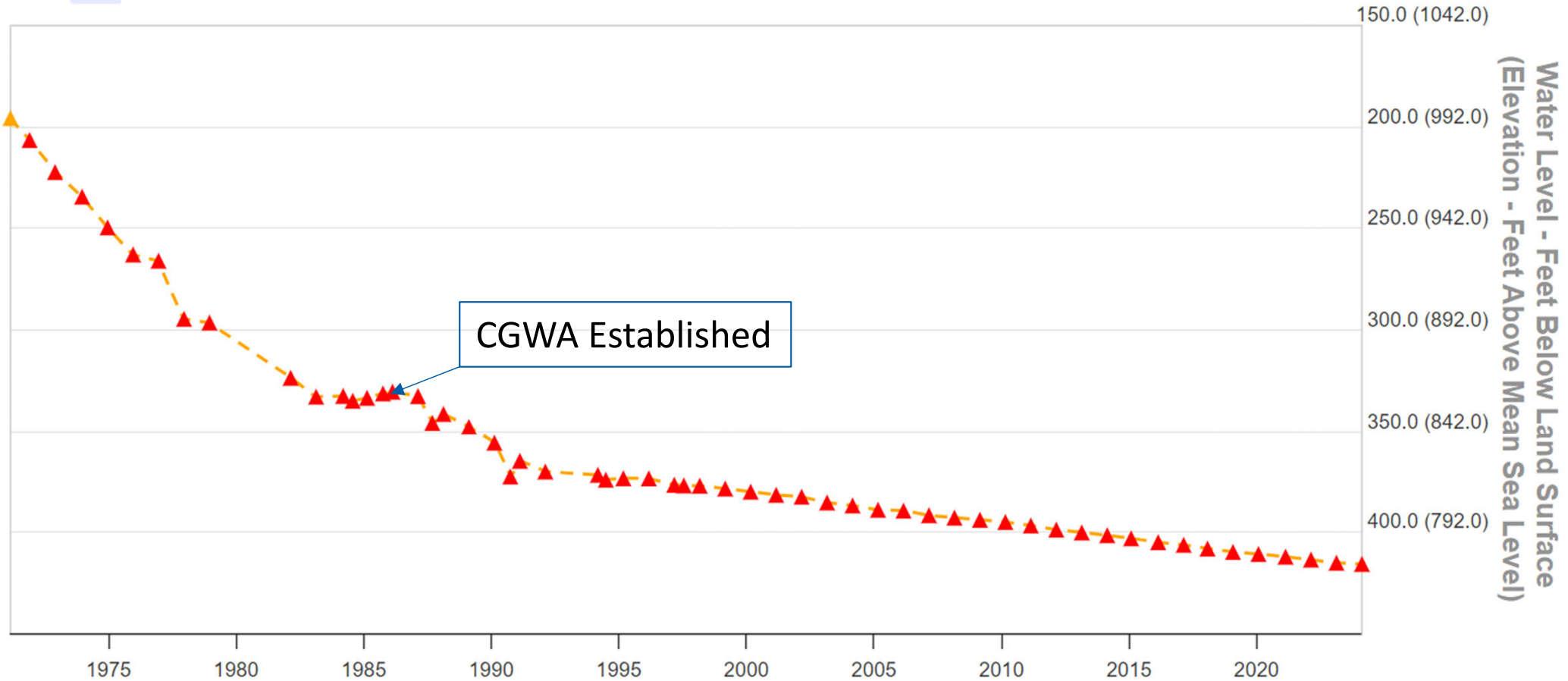
# Butter Creek CGWA



# BC CGWA – Pine City Subarea

Groundwater Levels for MORR 416

Zoom **All** 15 Feb 1971 → 6 Feb 2024



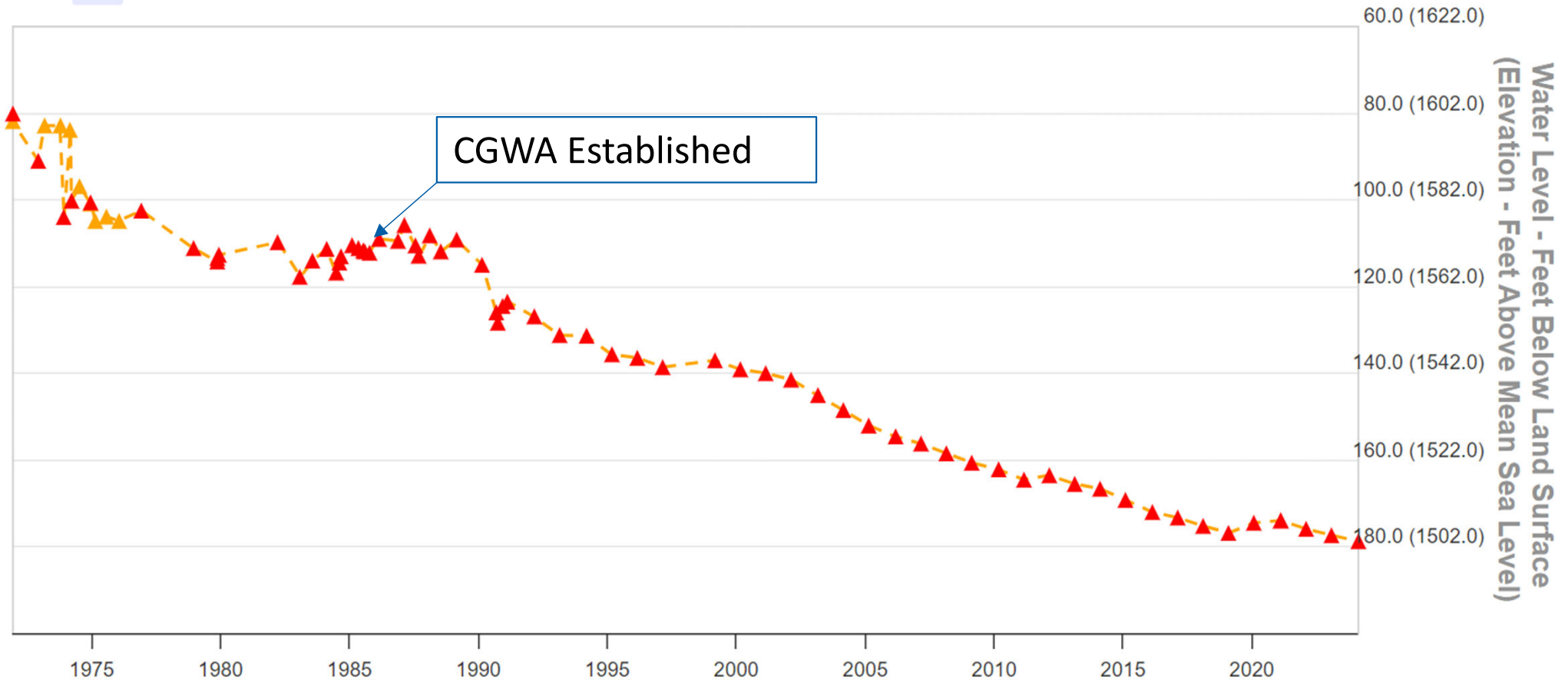
# BC CGWA – South Subarea

Groundwater Levels for MORR 441

Zoom

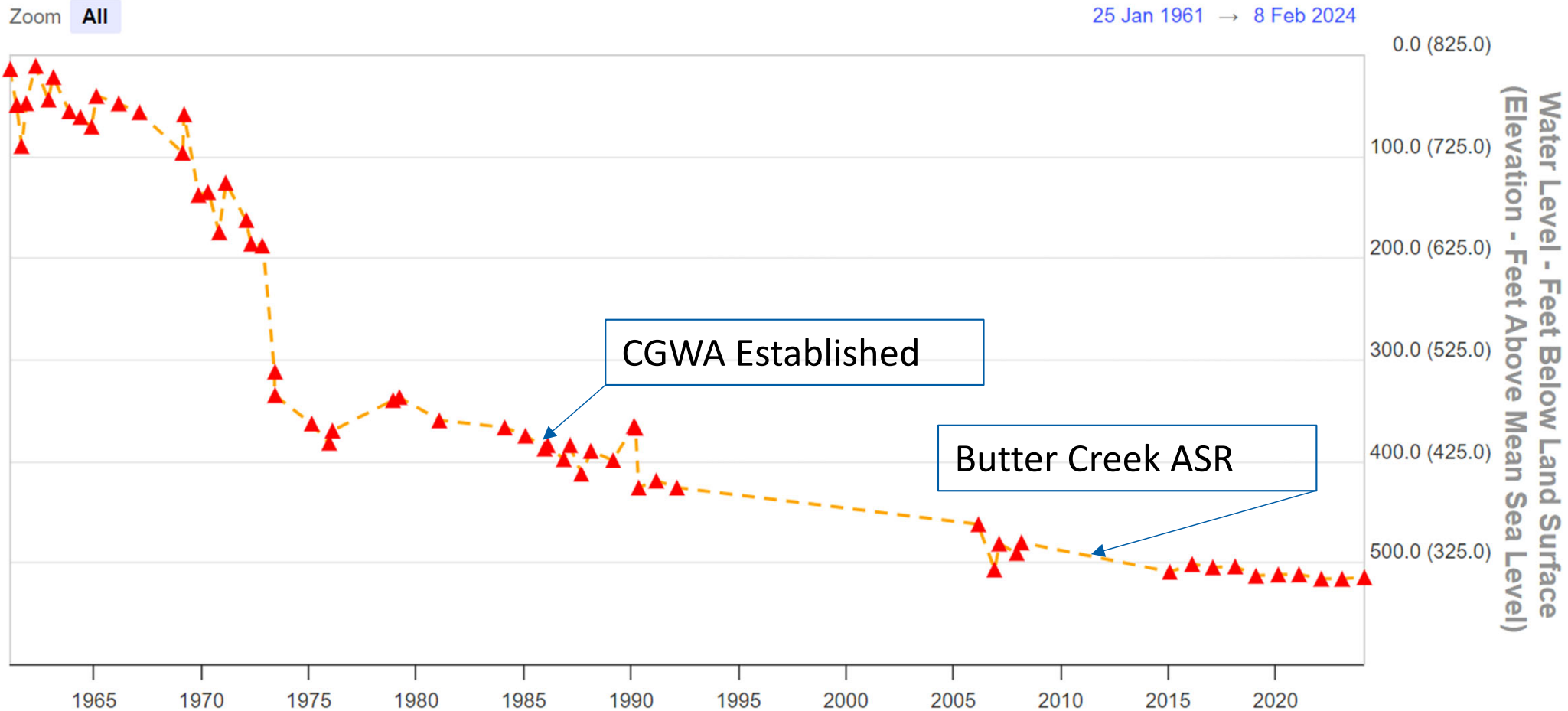
All

30 Nov 1971 → 6 Feb 2024



# BC CGWA – Echo Jct. Subarea

Groundwater Levels for UMAT 450



# Butter Creek CGWA

- Managed with annual allocation of “SAY” totaling 14,378 acre-feet to senior users
- ~63,000 AF of junior water rights are not able to be exercised, but remain uncanceled rights
- Groundwater level declines likely to continue until/unless SAY values and subarea boundaries are re-evaluated

# Summary of 2024 CGWA Review

Positive CGWA outcomes to date are associated with the development of alternate surface water sources, coupled with significant artificial recharge projects.

Recommend the Department:

- Maintain existing CGWA controls
- Re-evaluate controls in areas where groundwater levels continue to decline, as resources allow
- Establish framework for voluntary agreements

OREGON



WATER RESOURCES  
DEPARTMENT