

Water Resources Commission and Department

- Work Session Format
- Overview of WRC and WRD
 - Mission
 - Duties
 - Current Issues
 - Future Direction
- Dialog with Invited Experts



Water Resources Commission and Department

“serving the public by practicing and promoting
wise long-term water management”

Two co-equal goals

Supply

Stewardship

Water Resources Commission Duties and Powers

- Set Water Resource Policy
- Adopt Rules
- Conduct Hearings
- Administer Oaths
- Take Depositions
- Delegate to Director

Water Resources Commission Vital Statistics ORS 536.022 - 027

- Seven Members
- Appointed by Governor, Confirmed by Senate
- Distributed Geographically
- Maximum of two, four year terms
- Intelligent, Charming & Good Looking

Water Resources Commission



Public Water

Oregon's water resources are managed by the Oregon Water Resources Department.



“All the surface and ground water of the state...”

Historical Perspective: A System of Allocating & Using Water

- Doctrine of prior appropriation
- 1909 water code
- Water rights system

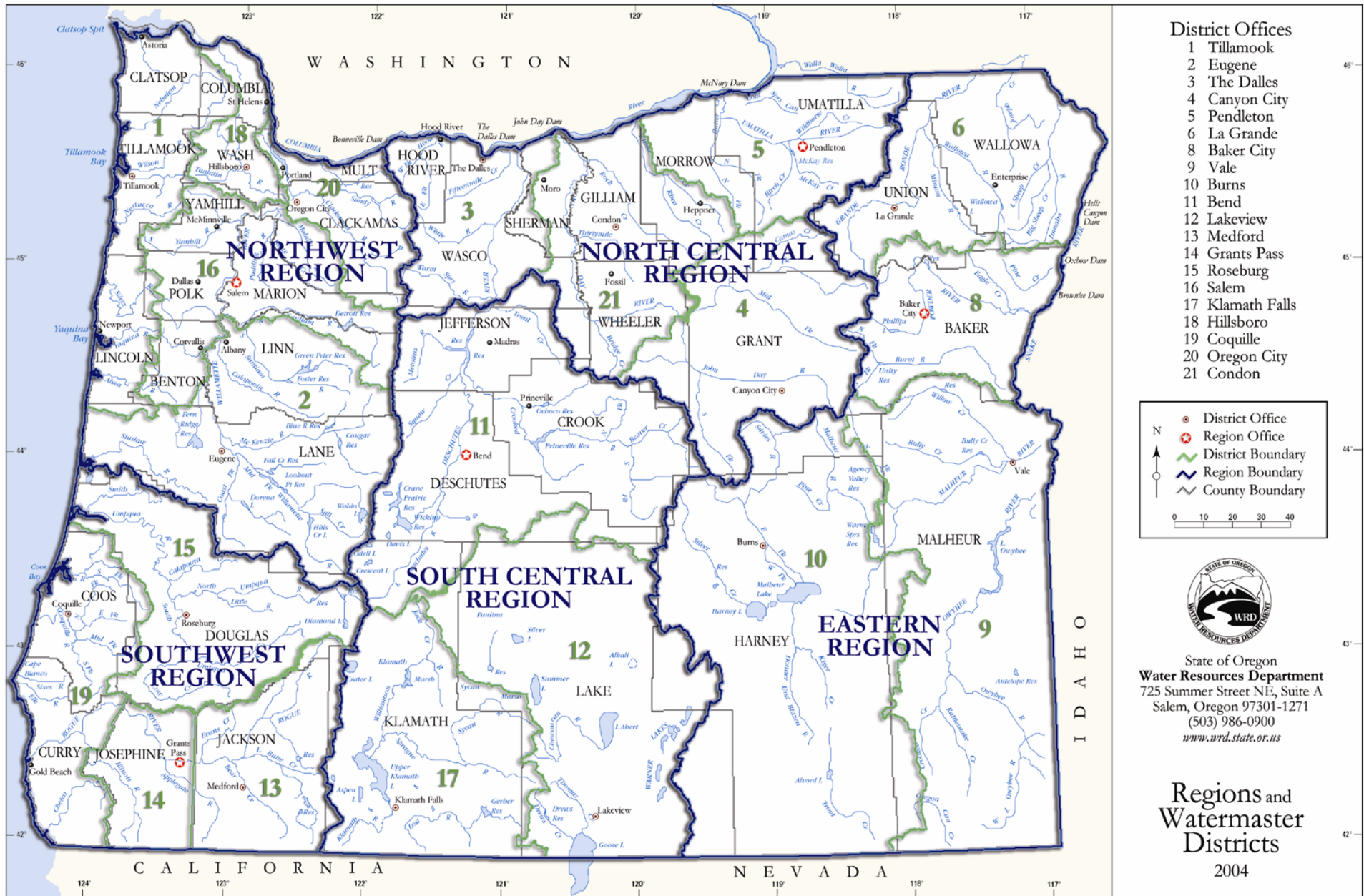


Photo courtesy of Oregon State Library

Water Resources Department Duties and Powers ORS 536.032 - 039

- Implement Policy Direction from WRC & Governor
- Administer and Enforce Laws
- Budget and Spend According to Legislative Limitations
- Conduct Adjudications
- Negotiate Tribal Settlements
- Carry Out Delegations from Commission

Field Offices



Core Strategies

- Protect existing water rights
- Facilitate water supply solutions
- Increase our understanding of our state's water resources and the demands on them
- Facilitate voluntary streamflow restoration
- Provide timely and readily accessible water resource data

Who Are Our Customers?

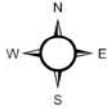
- General public
- Cities
- Counties
- Consultants
- Federal & state agencies
- Irrigation districts
- Public interest organizations
- Property buyers/sellers
- Realtors
- Well constructors



- Well owners
- Water right holders
- Water right applicants

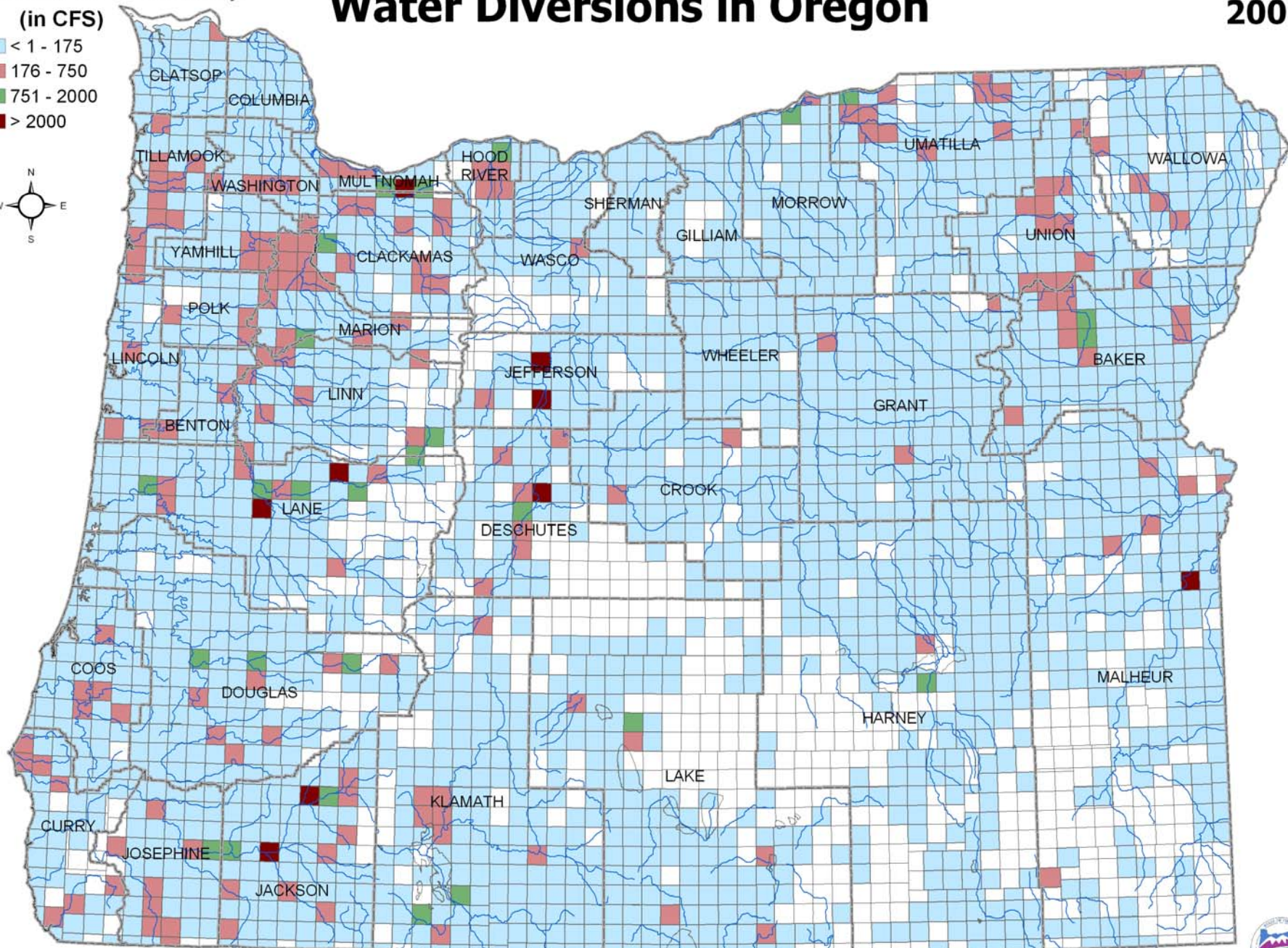
Flow Rates Per Township
(in CFS)

- < 1 - 175
- 176 - 750
- 751 - 2000
- > 2000



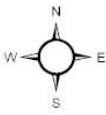
Water Diversions in Oregon

2005



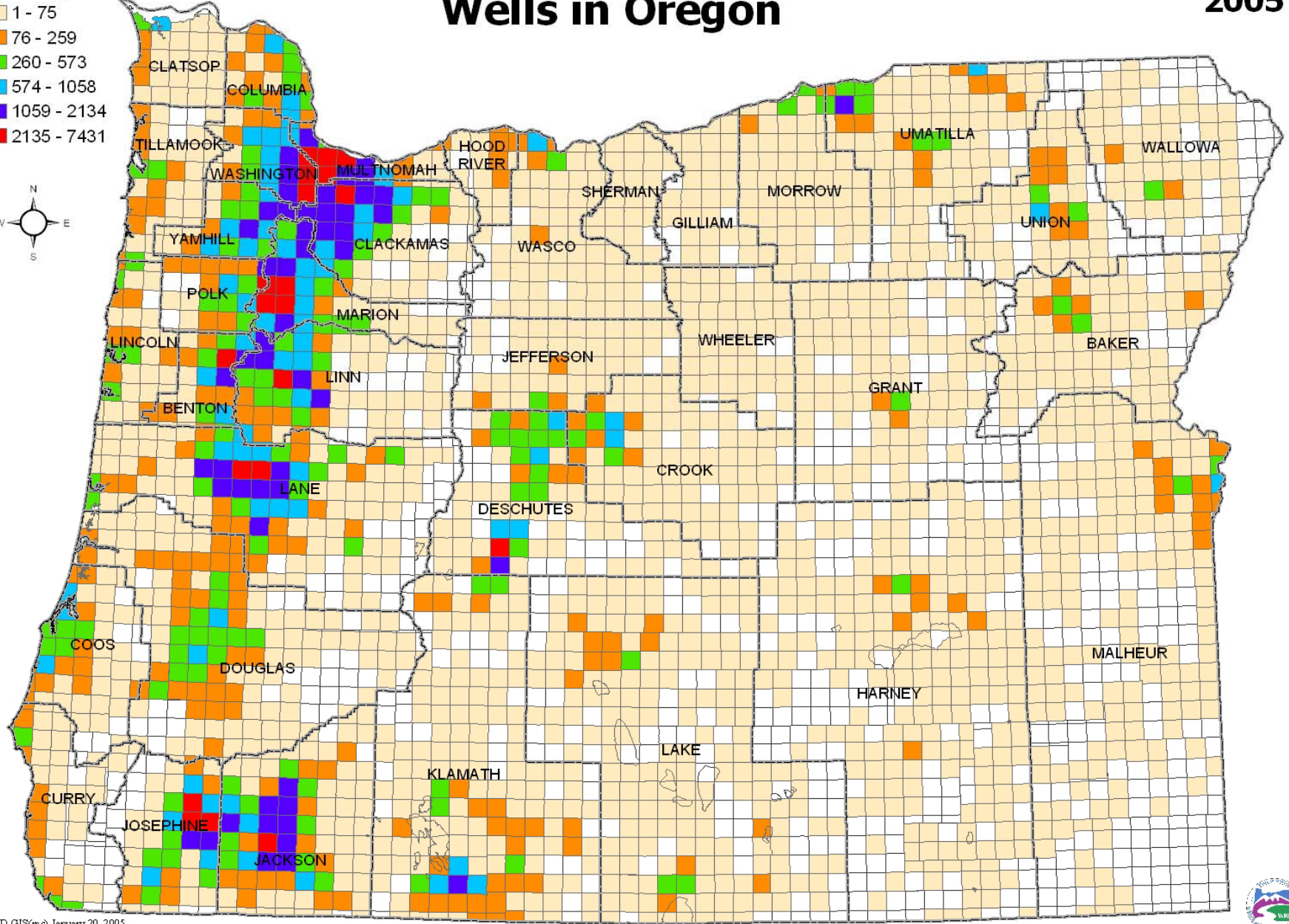
Well Logs Per Township

- 1 - 75
- 76 - 259
- 260 - 573
- 574 - 1058
- 1059 - 2134
- 2135 - 7431



Wells in Oregon

2005



Current Issues

➤ INTERNAL:

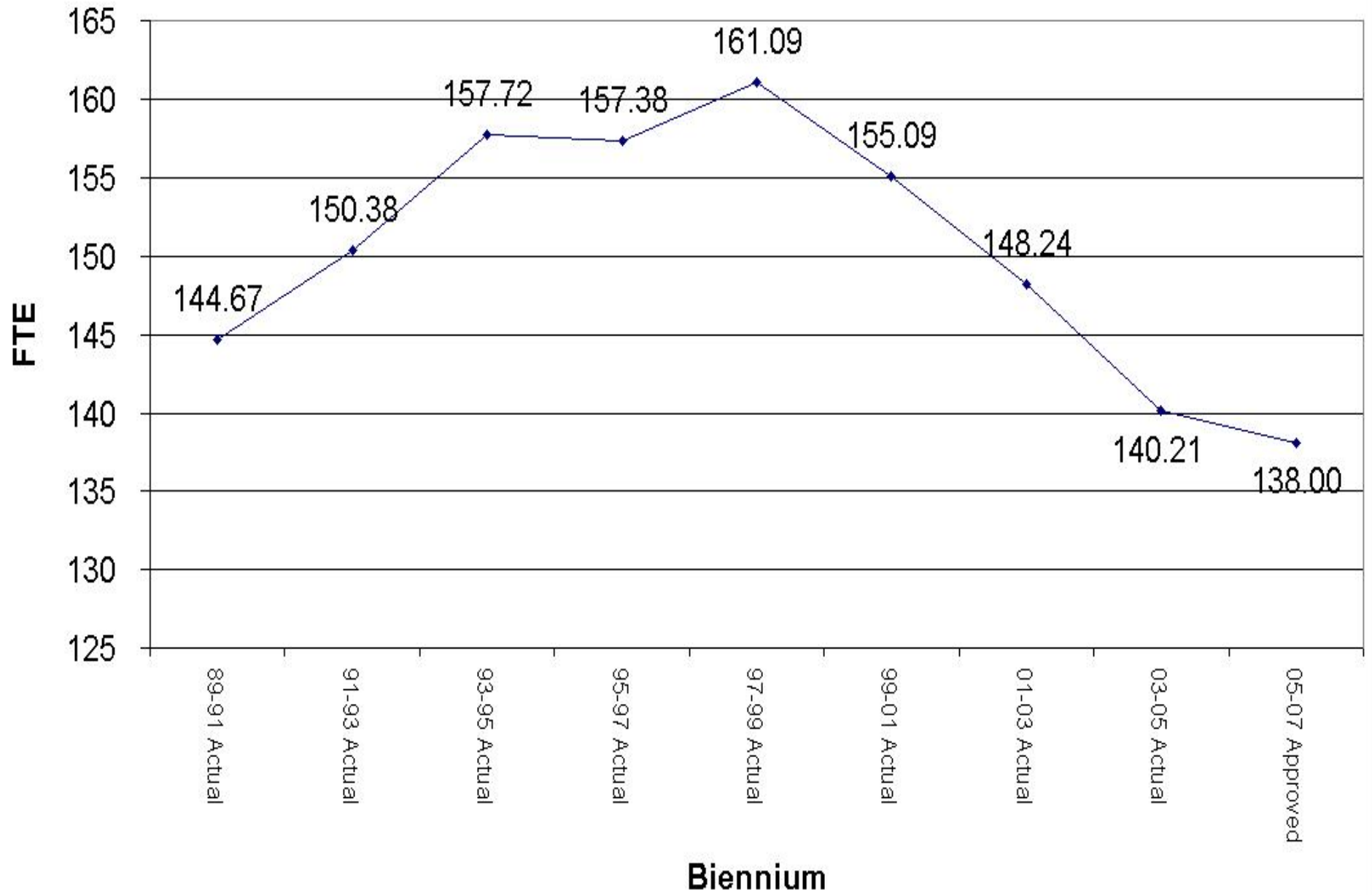
- Increasing workload with decreasing resources
- Contested applications more difficult to resolve

➤ REGIONAL: Klamath Basin

➤ BIG PICTURE:

- Satisfying additional demands in a largely appropriated system
- Drought
- Long-term future water supply (including potential impacts of regional warming on water supplies)

History of Full Time Equivalentents



Klamath Adjudication

	Filed	Resolved	Jan 2006
Claims	730	563	77%
Contests*	5663	5090	90%

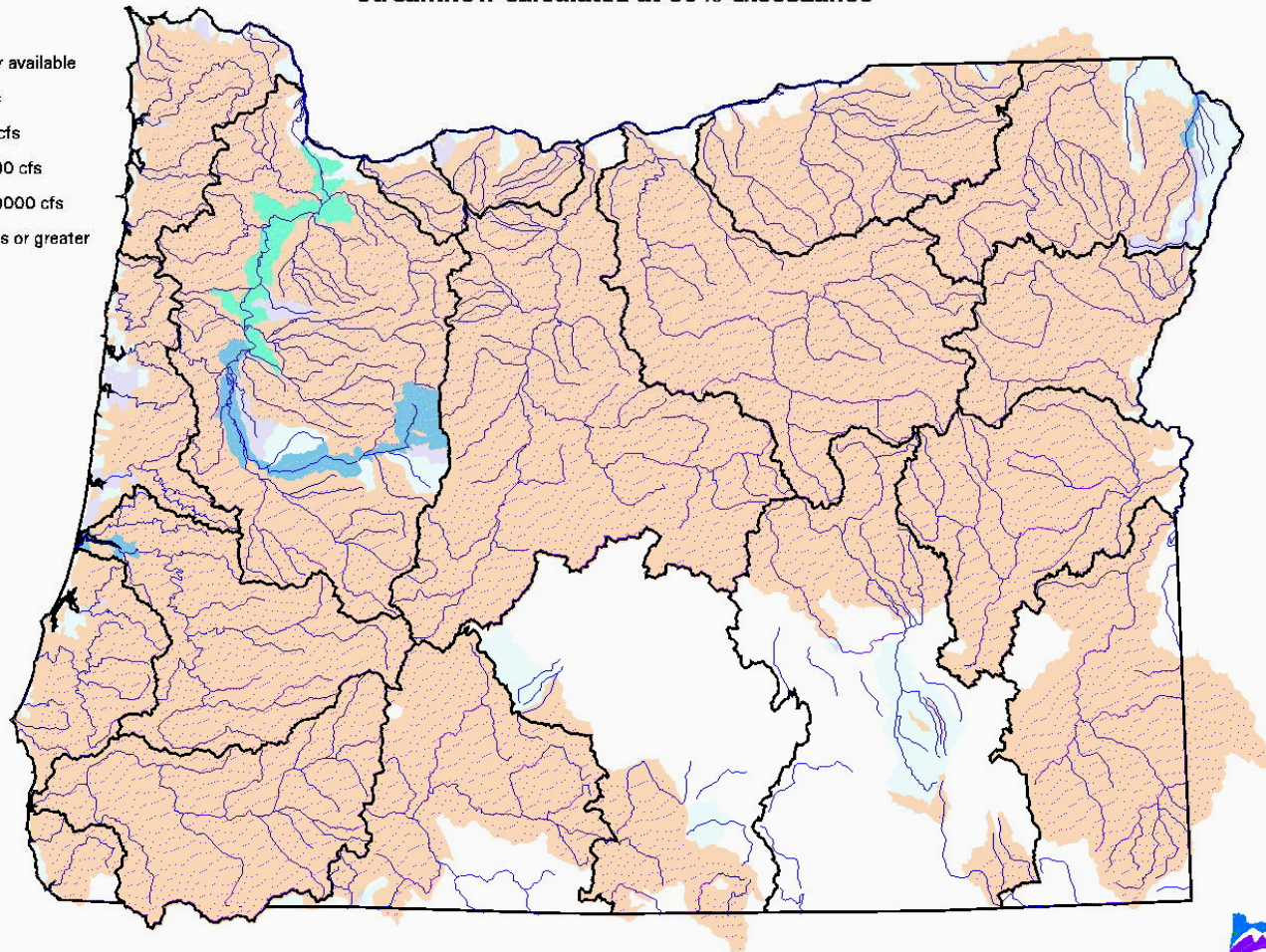
- **Hearings scheduled for remaining claims**
- **Hearings to be completed by end of 2007**
- **Goal – final order of determination to Klamath County Circuit Court in early 2008**

Satisfying New Demands in Largely Appropriated System

AUGUST AVAILABLE STREAMFLOW

Streamflow calculated at 80% exceedance

-  No data
-  No water available
-  1 - 10 cfs
-  11 - 100 cfs
-  101 - 1000 cfs
-  1001 - 10000 cfs
-  10001 cfs or greater



Map produced January 17, 2003.



FUTURE DIRECTION

- Continue to use technology to keeping up with declining staff resources
- Greater creativity needed to solve water supply limitations (ASR, AR, mitigation, marketing)
- Continue to develop new sources of water (including conservation as a way to meet water supply needs)

Commission Dialog with Invited Experts

- Reflect on the water issues facing the state
- Give the Commission the benefit of OSU perspectives on these issues
- Help set the stage for future Commission and Department action