



Columbia River, Columbia County



Eagle Creek Overlook, Multnomah County



Klamath River, Klamath County

Oregon's Integrated Water Resources Strategy



**Brenda Bateman
Alyssa Mucken
Ken Stahr**



Outline



Owyhee River at Leslie Gulch, Malheur County



Benham Falls, Deschutes River, Deschutes County



Detroit Lake, Marion County

- ❖ Retrospective of the Process
- ❖ Presentation of June 2012 IWRS
- ❖ Planned Revisions
- ❖ Letters of Support from Partners
- ❖ Next Steps (Agenda Item B)
- ❖ Observations from the Agency Directors
- ❖ Pause for Public Comment
- ❖ Consideration for Adoption



Looking Back: The IWRS Process



Columbia River, Umatilla County



Alsea Falls in the Coast Range, Benton County



Ochoco Reservoir, Crook County

Phase I

SETTING THE STAGE

- 3-year Workplan
- Public Involvement Plan
- Issue Papers
- Formation of key principles
- Project Team
- 3 Advisory Groups:
 - Policy Advisory Group
 - Agency Advisory Group
 - Federal Liaison Group



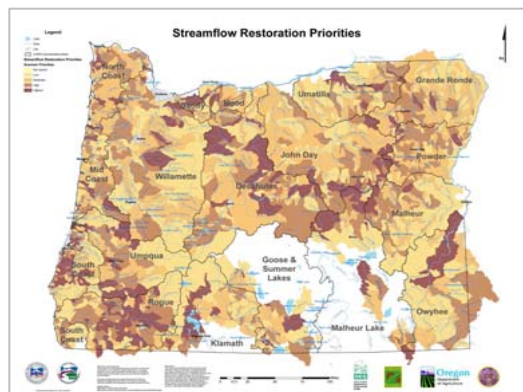
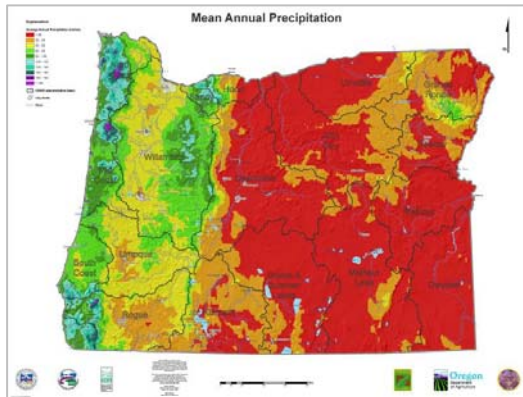
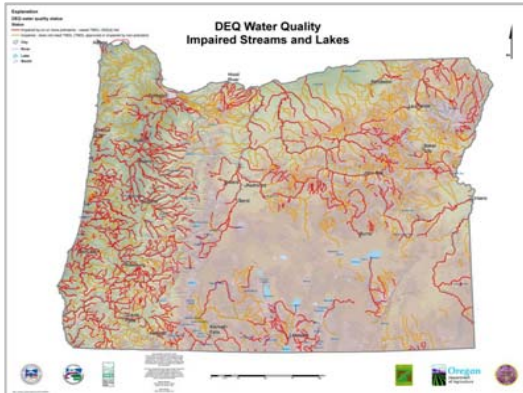
Looking Back: The IWRS Process

Phase II IDENTIFYING WATER NEEDS

- 11 open house events
- Numerous stakeholders workshops and partner meetings
- Online survey, and “virtual” open house

PUBLIC OUTREACH GOAL:

To form a vision for Oregon’s water future, & to identify critical issues and potential solutions





Looking Back: The IWRS Process



Willamina Creek, Yamhill County



Catherine Creek State Park, Union County



Malheur Lake, Harney County

Phase III DEVELOPING RECOMMENDED ACTIONS

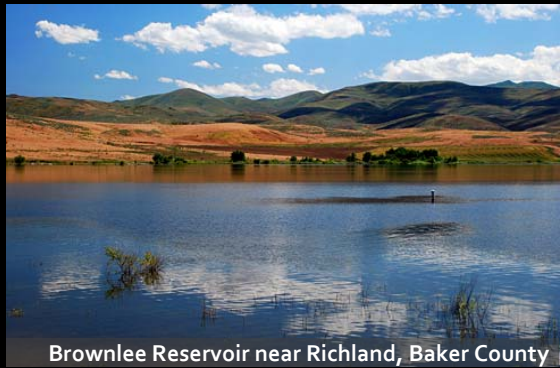
- Feb. 2011 Progress Report to 76th Legislative Assembly
- June 2011 “Bulletins”
- Numerous opportunities for public comment
- Meeting with advisory groups
- December 2011 Discussion Draft



The IWRS Process Today



Timothy Lake, Clackamas County



Brownlee Reservoir near Richland, Baker County



North Umpqua River, Douglas County

Phase IV

PRODUCING OREGON'S FIRST IWRS

- Continued opportunity for comment
- Notified other boards/commissions
- Draft released: June 22, 2012



Looking Ahead: The IWRS Process



South Jetty, Clatsop County



East Fork Illinois River, Josephine County



Rogue River Gorge, Jackson County

Phase V

IMPLEMENTATION AND EVALUATION

- IWRS due to the Oregon Legislature by December 31, 2012
- Identify lessons learned and any modifications for next iteration



Presentation of June 2012 IWRS



- IWRS and Executive Summary available online
- New improvements based on public comments, PAG, discussions with WRC
- Examples of modifications
 - Re-organization
 - Removed extraneous background
 - Beefed up Executive Summary
 - Added Conclusion
 - Better context/tone (successes, and “total water” in Oregon)
 - Contribution of irrigated agriculture
 - Role of federal agencies
 - More detail on storage, water supply development, instream flows



Planned Revisions (Examples)

COPY EDITS

- percent vs. %
- references to page numbers (off by 2)

UPDATES

- # of water bodies with fish advisories (19)
- # of SIGPOD's with measurement devices (2012 #'s)

CLARIFICATIONS

- issuance of advisories (OHA and ODA); not "several"
- beginning of water quality programs (1938?)

FORMATTING

- new cover
- remove "draft"
- insert signature page, shifts page numbers by 2



Jackson Bottom Wetlands, Washington County



Letters of Support

LETTERS OF SUPPORT FROM:

- Board of Agriculture
- Board of Forestry
- Board of Geology
- Drinking Water Advisory Committee (OHA)
- Environmental Quality Commission
- Fish and Wildlife Commission
- Land Conservation and Development Commission
- Parks and Recreation Dept.
- State Marine Board
- Sustainability Board
- Watershed Enhancement Board
- U.S. Bureau of Reclamation
- U.S. Dept. of Energy – Bonneville Power Admin.
- U.S. Environmental Protection Agency
- U.S. Geological Survey
- U.S. Forest Service



John Day River, Wheeler County



Wallowa Lake, Wallowa County



Willamette River near Buena Vista, Polk County



Looking Ahead: Next Steps

AGENDA ITEM B (IMPLEMENTATION)

- Role of IWRS discussions in future meetings
- Development of IWRS workplan for 2012-2017
- Preparation for 2013 Legislative Session and subsequent Legislative Sessions



Bandon Beach, Coos County



Cottonwood Canyon State Park, Gilliam County



Crump Lake near Plush, Lake County



Observations from the Agency Directors

Phil Ward,
Oregon Water Resources Department

Dick Pedersen,
Oregon Department of Environmental Quality

Roy Elicker,
Oregon Department of Fish and Wildlife

Katy Coba,
Oregon Department of Agriculture



Public Comment



Blue Heron on the Willamette River near Eugene, Oregon



Consideration for Adoption



Oregon Coast near Seal Rock, Lincoln County



Silvies River, Grant County



S. Fork McKenzie River, Lane County

Commissioner Discussion



Consideration for Adoption

Options:

✓ **OPTION 1**
Adopt Oregon's Integrated Water Resources Strategy with noted modifications

OPTION 2
Adopt Oregon's Integrated Water Resources Strategy with additional modifications

OPTION 3
Direct staff to re-visit the document and return in November with a modified Strategy for consideration

Staff Recommends: **OPTION 1**



Sixes River, Curry County



Coho Salmon in the Sandy River, Clackamas County



East Fork Hood River, Hood River County

Thank you.

www.wrd.state.or.us