

# South Central Region District 17



Scott White  
Watermaster, District 17



# KLAMATH RIVER BASIN



0 10 20 30 Miles

Oregon Lambert Coordinate Reference System (CRS83) Project



**Selected stream gauges**

- Williams River
- Sprague River
- Iron Gate Dam

**National Wildlife Refuges**

- Bureau of Reclamation Project (Public Access) (Project boundaries not to scale)

**CONTACT INFO**

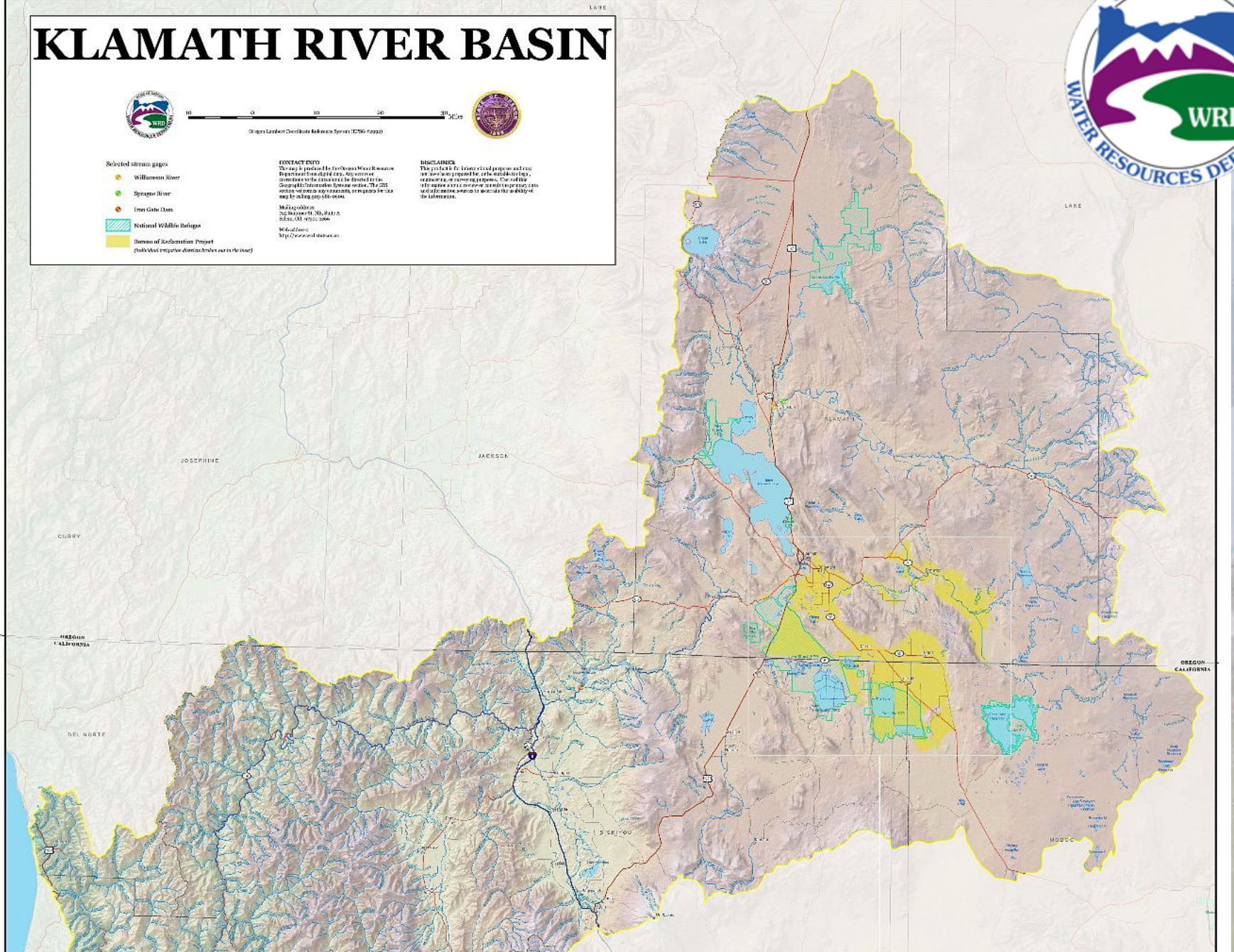
This map is produced by the Oregon Water Resources Department from digital data. Any errors or omissions are the responsibility of the user. The Oregon Department of Transportation System website: <http://www.oregon.gov/ODOT> may be helpful for more information.

**Map produced by:**  
 Oregon Water Resources Department  
 1000 NE Oregon Street  
 Salem, OR 97331-2000

**Map of Oregon:**  
<http://www.oregon.gov>

**DISCLAIMER**

This product is for informational purposes and does not constitute a warranty. The Oregon Water Resources Department is not responsible for any errors or omissions in this product. The user assumes all liability for any use of this product.







# District Overview

- **District 17 = >5,600 Square Miles**
  - Counties - Klamath, Jackson and Lake
  - The office is located in Klamath Falls
  - Klamath County funds one Administrative Assistant
- **Surface Water - 624,000 acres /1350 Water Rights\***
- **Ground Water – 145,000 acres / 900 Water Rights**
- **Oldest Priority Date – October 14, 1864 (Lost River)\***

\* Numbers do not incorporate Klamath Adjudication



# District Overview

- **7 Decrees**
  - Sprague River
  - Lost River
  - Wood River
  - Anna Creek
  - Buck Creek
  - Cherry Creek
  - Swan Lake
- **24 Irrigation Districts**
- **11 OWRD Gaging Stations located on Major tributaries of the Klamath River**
- **7 USGS Gaging Stations**



# District Overview

- **23 Instream Water Rights on 12 Streams**
- **US Bureau of Reclamation – Klamath Project**
  - **210,000 Irrigated Acres (OR and CA)**
    - **Upper Klamath Lake**
    - **Gerber Reservoir**
    - **Clear Lake (CA)**





# Regulation

- **Regulation is limited in the basin**
  - Do not regulate by priority for or against “Claims”
- **Annual Regulation**
  - Sevenmile Creek
  - Sand/Scott Creek (Special Order)
- **Unauthorized Use**

# Dam Safety



•63 Low Hazard

•2 Significant\*

•2 High\*

\* Federal Dams





# Klamath Basin Adjudication



- **December 23, 1975 – Adjudication was initiated**
- **February 1, 1991 – deadline to file Proofs of Claim**
- **April 30, 1997 – deadline to file Proofs of Claim for Bureau of Reclamation project users and Federal Agencies**



# Klamath Basin Adjudication



- **October 4, 1999 – Open Inspection commenced; Preliminary Evaluation published**
- **May 8, 2000 – deadline to file contests to claims or Preliminary Evaluation of Claims**
- **End of Current Biennium – anticipated date the FOD will be filed with Klamath Circuit Court**

# KLAMATH BASIN ADJUDICATION

## Claim and Contest Information

### as of **June 1, 2012**



Claim Type	Claims	Contests	Claims Settled/ Resolved	Contests Settled/ Resolved	Claims Active	Contests Active
Federal Reserved Claims	313	4,355	313	4,355	0	0
Bureau of Indian Affairs/Tribal Claims	64	340	64	340	0	0
Other Claims (Pre-1909, Allottee, Walton)	300	969	300	969	0	0
Withdrawn Claims	29	--	29	--	--	--
Uncontested Claims	24	--	24	--	--	--
<b>TOTALS</b>	<b>730</b>	<b>5,664</b>	<b>730</b>	<b>5,664</b>	<b>0</b>	<b>0</b>

Contests Resolved = 100.0%

Claims Resolved = 100.0%





# What's New?

- **Rechanneling the South Fork Sprague River**

- 1.25 miles reconstructed to replace straightened channel
- Improve fish habitat
- Improve water quality
- Reduce Erosion



# What's New?



## • Geothermal Exploration

- New technology captures more energy opening avenues for utilizing lower temperature water (185°-250°F)
- Proven technology, first in US
- Locations in Oregon and California (Refuge)
- Right to Produce and Inject



# South Central Region District 17



Questions?

Scott White  
Watermaster, District 17

