

Commission Review of Proposed Storage in the Rogue Basin

Application R-87742



Tim Wallin

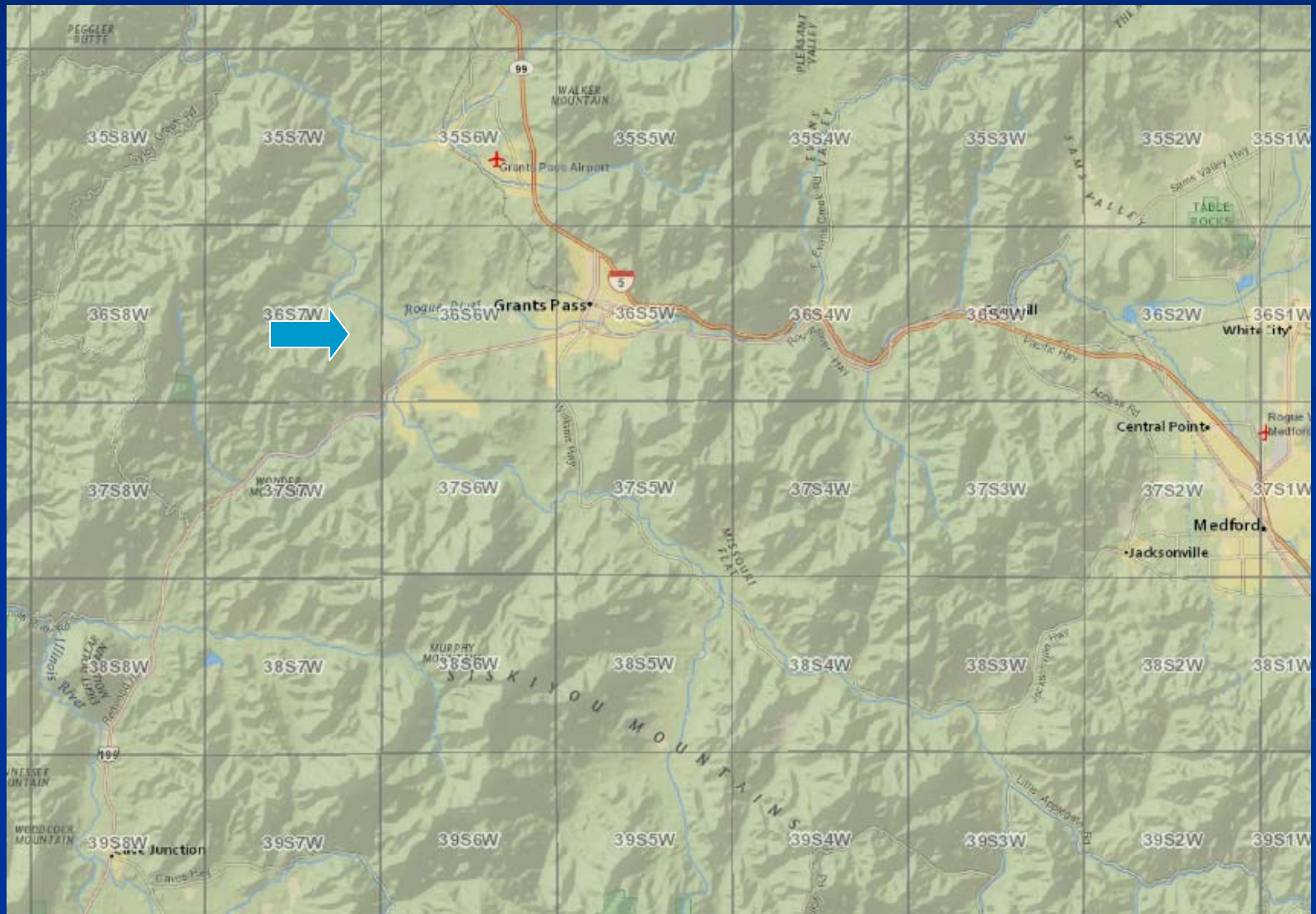
Water Rights Program Manager

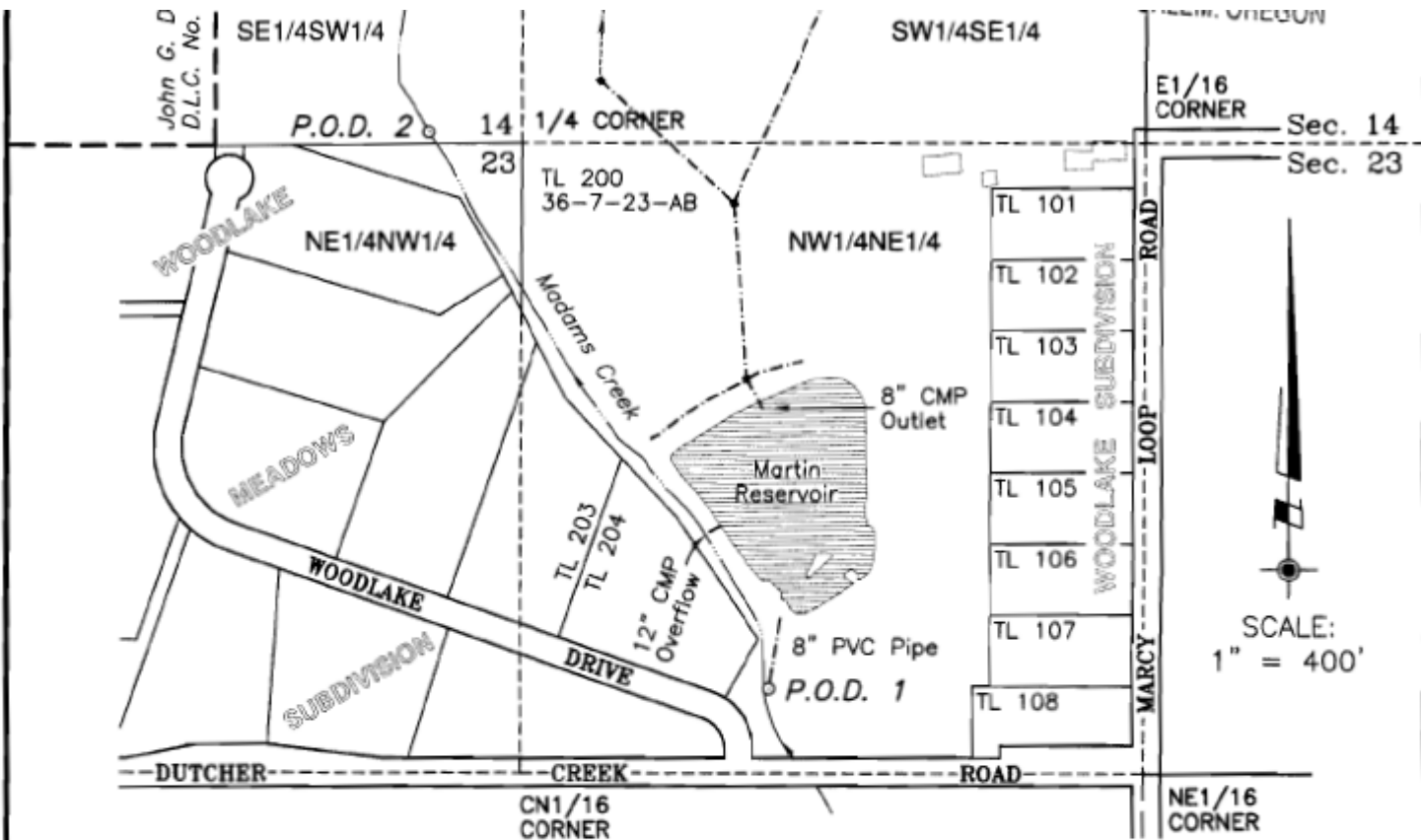
Dwight French

Water Right Services Administrator





Application Overview

- Seeks 15.3 AF annually from Madams Creek for storage for irrigation





LEGEND:

-  Existing Building (approximate location)
-  6" PVC Pipe (except as noted)
-  Irrigation Ditch
- P.O.D. 1** Existing Point of Diversion per Certificate No. 15476, 1150' south and 523' east from the N1/4 Corner of Section 23, being within the NW1/4NE1/4, Sec. 23, T.36S., R.7W., W.M. (Madams Creek)
- P.O.D. 2** Existing Point of Diversion, 23' north and 197' west from the S1/4 Corner of Section 14, being within the SE1/4SW1/4, Sec. 14, T.36S., R.7W., W.M. (Madams Creek)
-  Martin Reservoir: Submerged area when full = 3.11 acres
Full storage volume = 15.3 acre-feet

Commission Review

- Rogue Basin Program requires WRC review of applications proposing to impound more than 3,000,000 gallons (9.2 AF) (OAR 690-515-0040(2)).
- WRC may establish additional minimum flows to support aquatic life or minimize pollution.

Staff Review

- Water is available for storage December thru May
- Standard interagency Division 33 consultation conducted regarding sensitive, threatened, and endangered fish
- WRD solicited recommendations from ODFW and ODEQ, but neither recommended additional minimum flows to support aquatic life or minimize pollution.

WRC Alternatives and Recommendation

1. Direct the Department to continue processing application R-87742 without additional minimum flows to support aquatic life or minimize pollution.
2. Establish additional minimum flows to support aquatic life or minimize pollution.
3. Require the Department to conduct further review of the application and report to the Commission at a future meeting.