


Update on the Willamette Basin Reservoir Study

Water Resources Commission Meeting
February 8, 2013

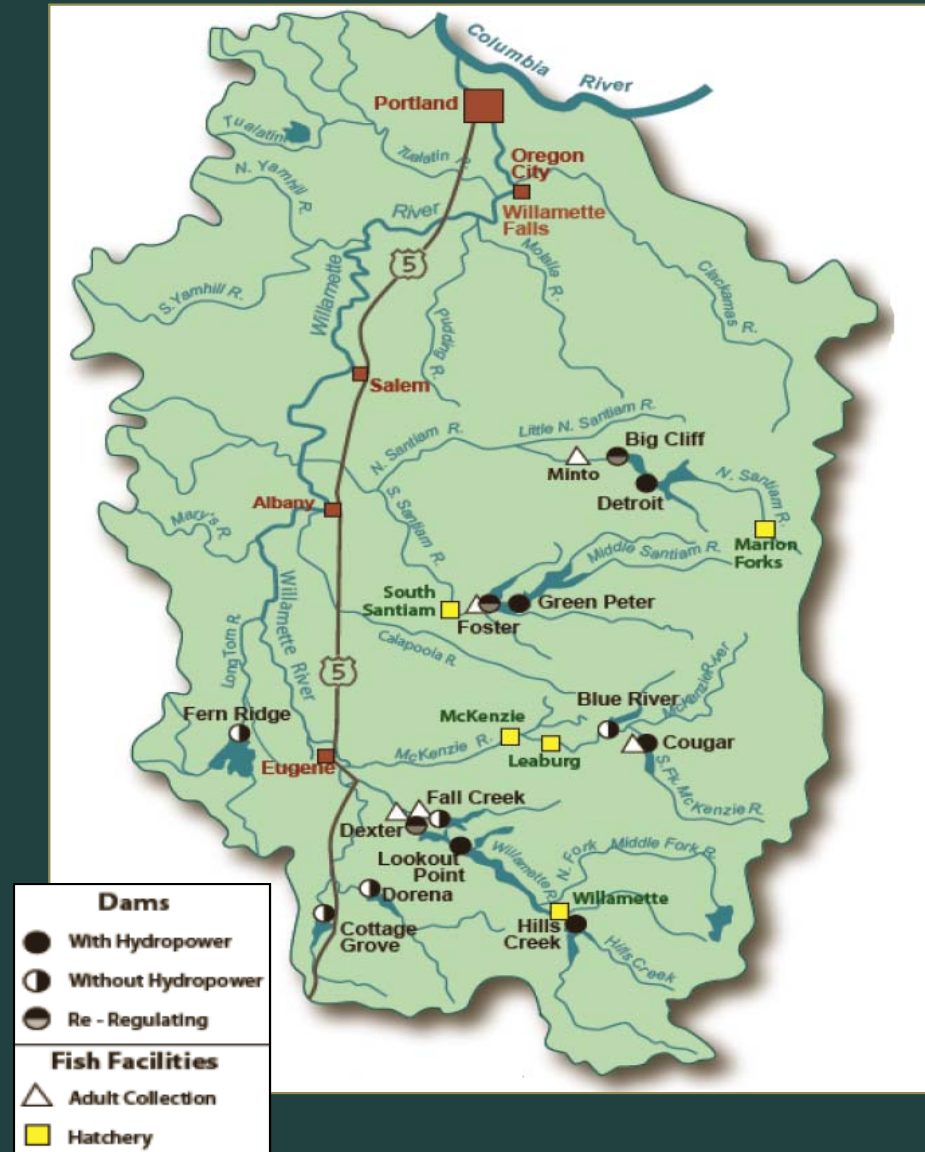


Photo: Don Hankins 

Phil Ward, Director, OWRD
Tom Paul, Deputy Director, OWRD
Kevin Brice, Deputy District Engineer, Portland District, USACE


Background

- 13 reservoirs
- 1.6 million acre-feet
- 5 percent is contracted
- 34 percent of storage (~536,700 acre-feet) is released to maintain summer flows at Albany & Salem, during an average year
- 4.3 million visits annually



Willamette Basin Reservoir Study

Timeline

- **Initiated in 1996**
 - **Suspended in 2000**
 - **2008 Willamette Biological Opinion**
 - **2011 White Paper on Small-Scale Allocation**
 - **2012 Adoption of the Integrated Water Resources Strategy**
 - **Today: Beginning 2013 Small Scale Study**
- 

Small Scale Study

2013 Workplan Tasks

1. Modeling Reservoir Operations*
2. Data Collection*
3. System Pricing*
4. Environmental Assessment
5. Dam Safety Review and Write-Up
6. Update Feasibility Cost Sharing Agreement*
7. Issue Paper for System Pricing*
8. Coordination/Administrative Duties*
9. Report on the Small-Scale Reallocation

** These tasks inform both the Small-Scale Reallocation Study and the Willamette Reservoir Study.*

The Road Ahead

Water Resources Department:

- **WaterSMART Basin Study**
- **Continue involvement in Willamette BiOp committees**
- **Continue discussions & involvement with basin stakeholders**
 - Association of Oregon Counties
 - League of Oregon Cities
 - The Nature Conservancy
 - Oregon Association of Nurseries
 - Oregon Farm Bureau
 - Oregon Water Resources Congress
 - Oregon Water Utilities Council
 - Special Districts Association of Oregon
 - WaterWatch of Oregon

The Road Ahead

Corps, OWRD, and Stakeholders:

- **Finish the Small Scale Study tasks, including Report by September 2013**
- **Design the 2014 (and beyond) workplan over next several months**



Questions and Discussion

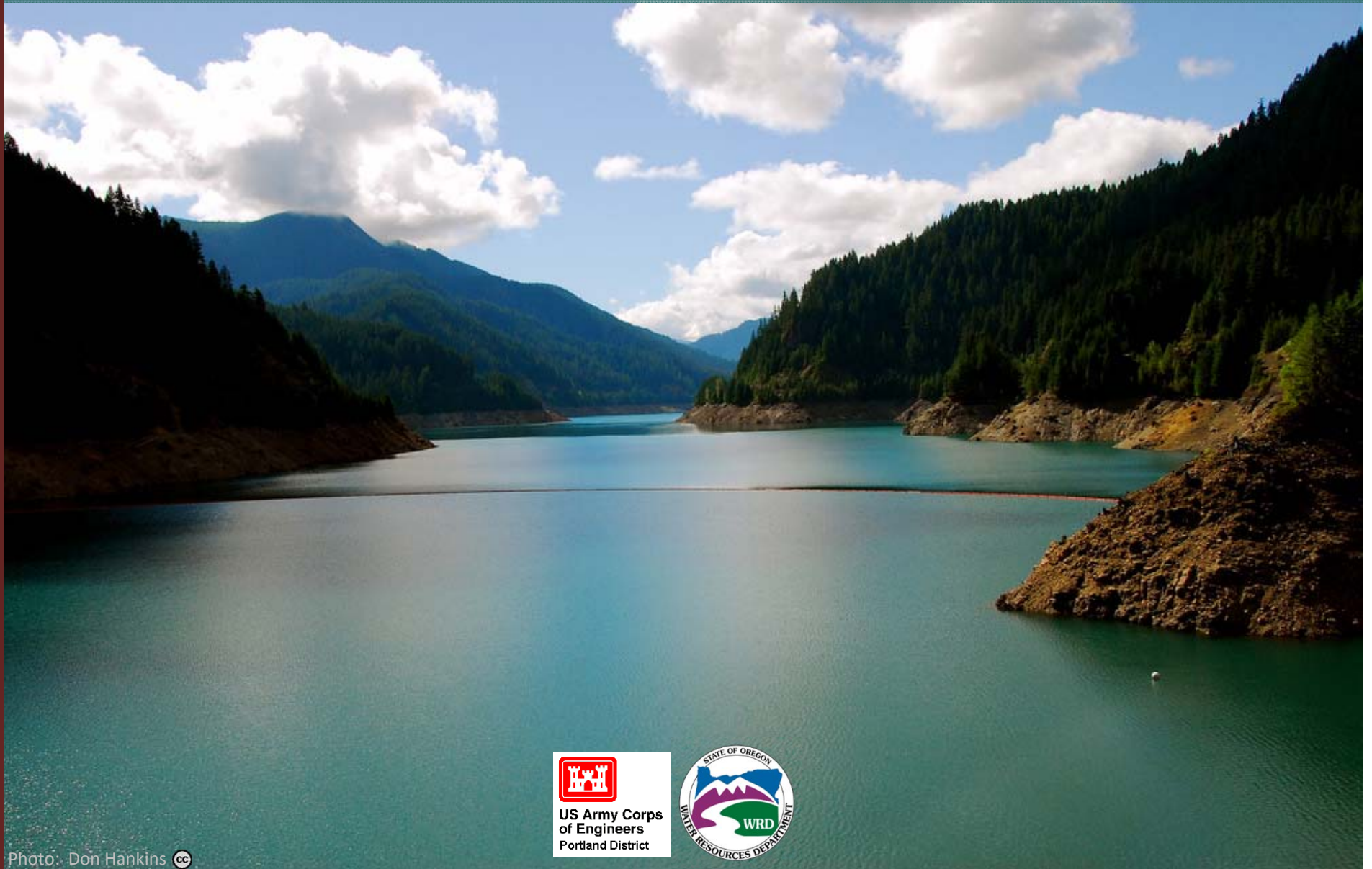


Photo: Don Hankins 