

Key Performance Measures

Fiscal Year 2012-2013

Brenda Bateman, Technical Services Administrator
Racquel Rancier, Senior Policy Coordinator



14 Key Performance Measures

✓ Making Progress

- #1 - Flow Restoration
- #2 - Protection of Instream
Water Rights
- #3 - Monitor Compliance
- #4 - Streamflow gaging
- #5 - Assessing groundwater
resources
- #6 - Equip Citizens with
Information (data availability)
- #8 - Water Measurement
- #11 - Promote Efficiency in
Transfer Processing
- #14 - Customer Service

➤ Not Making Progress

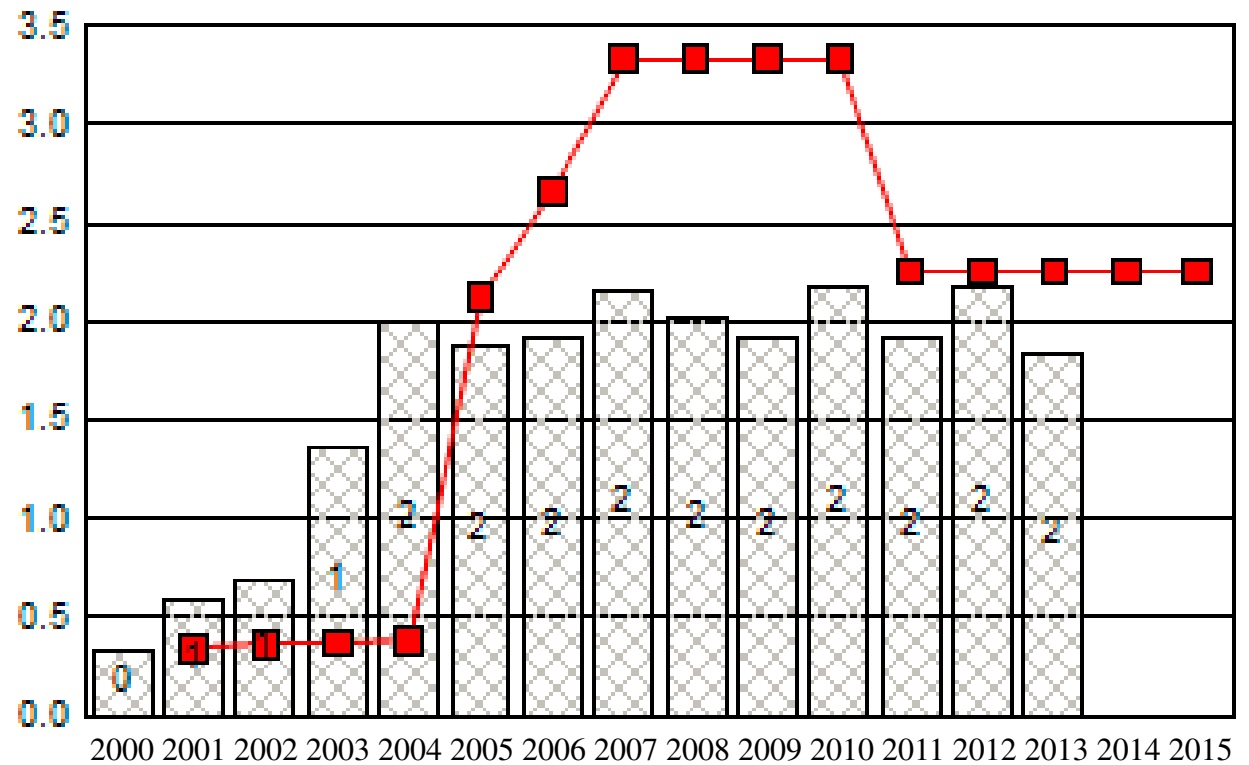
- #7 - Equip citizens with
information (data accessed)
- #9 - Promote efficiency in
WMCP reviews
- #10 - Promote efficiency in
Water Right Application
Processing
- #12 - Promote efficiency in field
staff regulatory activities
- #13 - Increase water use
reporting

KPM #7

Equip Citizens with Information

The screenshot shows the Oregon Water Resources Department website. The browser address bar displays "www.oregon.gov/OWRD/pages/index.aspx". The page title is "Water Resources Department". A left sidebar lists navigation options: About Us, Contact Us, Adjudications, Commission, Dam Safety, File Pickup, Forms, Groundwater, Jobs at WRD, Links, Maps, Publications, Surface Water, Transfers, Water Law, Water Management, Water Rights, and Well Construction and Compliance. The main content area features "Oregon's Integrated Water Resources Strategy" with a small image gallery and text describing the state's blueprint for water management. Below this, there are sections for "Resources For:" (listing Well Constructors, Exempt Use Water Well Recording, Realtors®, Certified Water Right Examiners, Water Conservation, Drought Watch, Conservation and Supply Resources and Programs, Deschutes Basin Mitigation Program, Environmental Justice, Gold Mining: FAQ, Assignments and Ownership Updates) and "Lookup Information:" (listing Lookup Water Rights, Find Out if a Property has a Water Right, Find a Well Log, Well ID Application Form, Find a Document (Vault), Near Real Time Streamflow Data, Ground Water Data, Dams in Oregon).

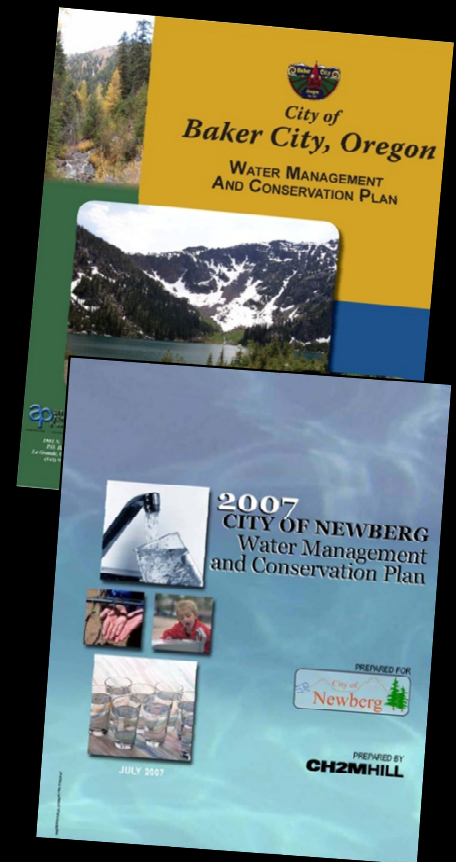
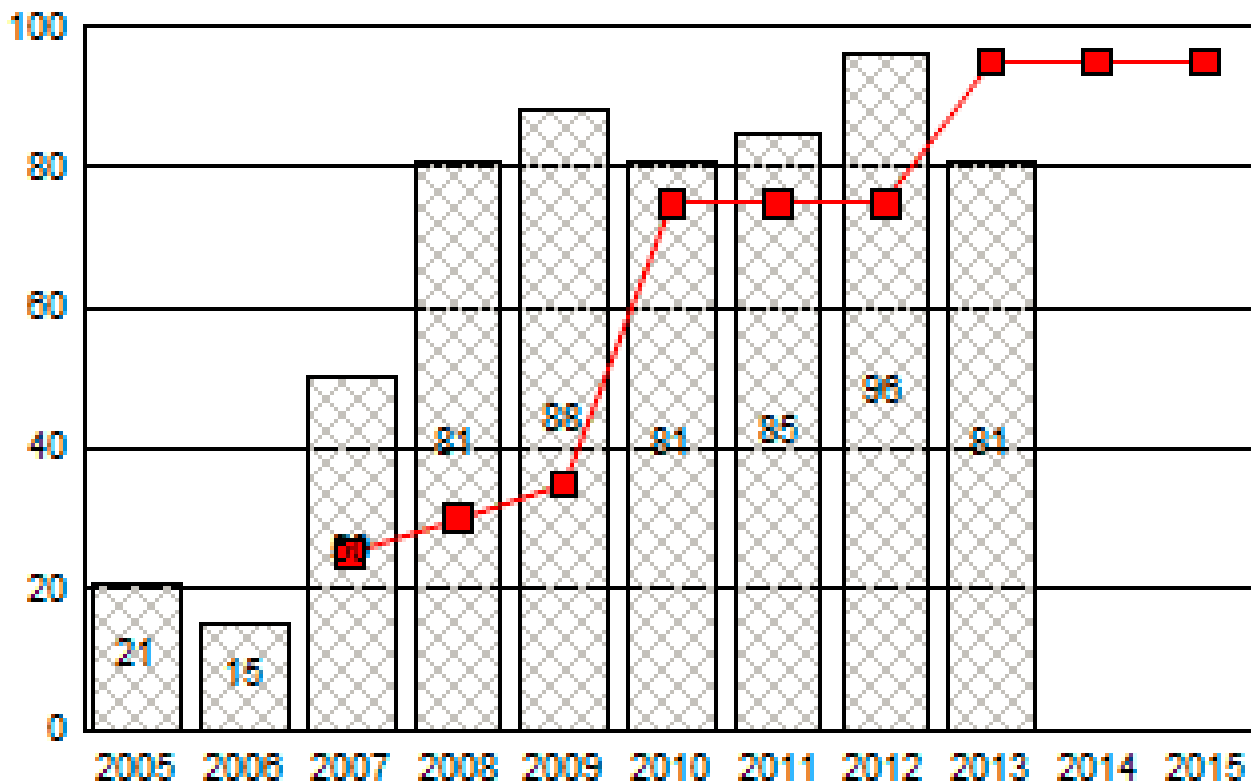
Number of Times Water Management-Related Data Were Accessed Through the Internet (in millions)



KPM #9

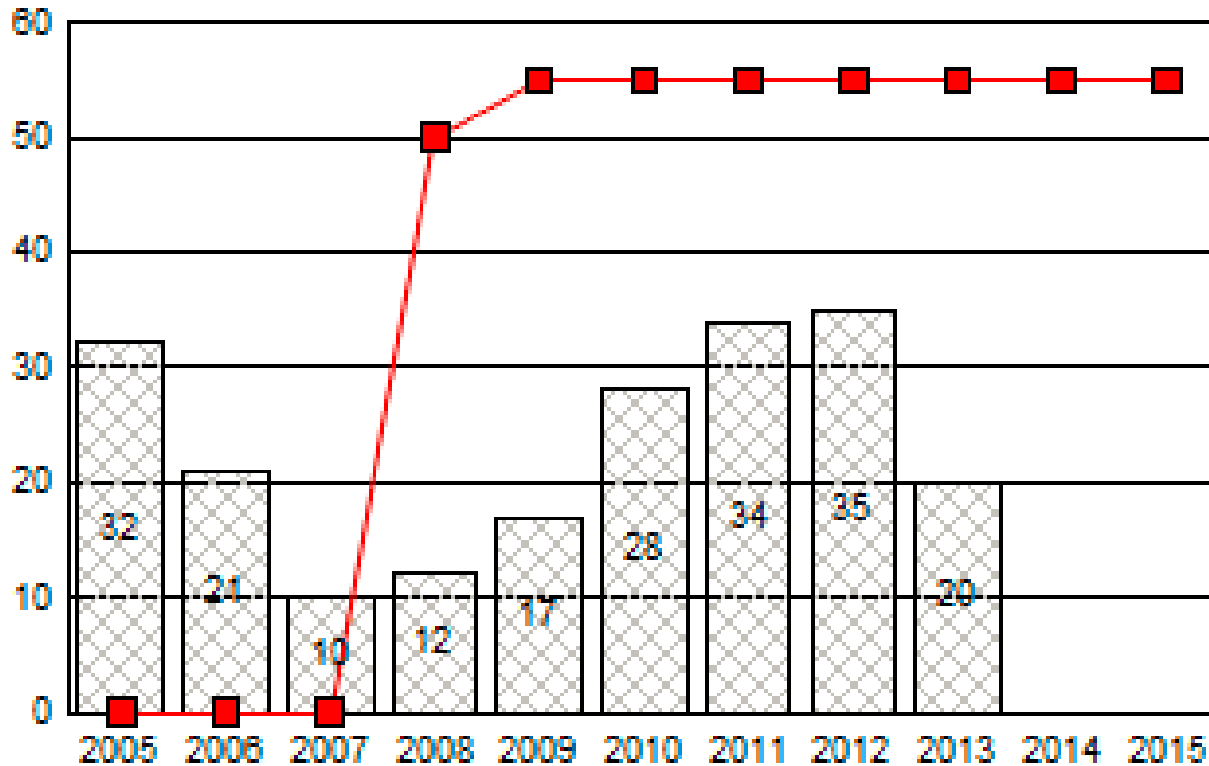
Promote Efficiency in WMCP Reviews

Percent of Water Management and Conservation Plans That Received a Review within 90 Days of Submittal



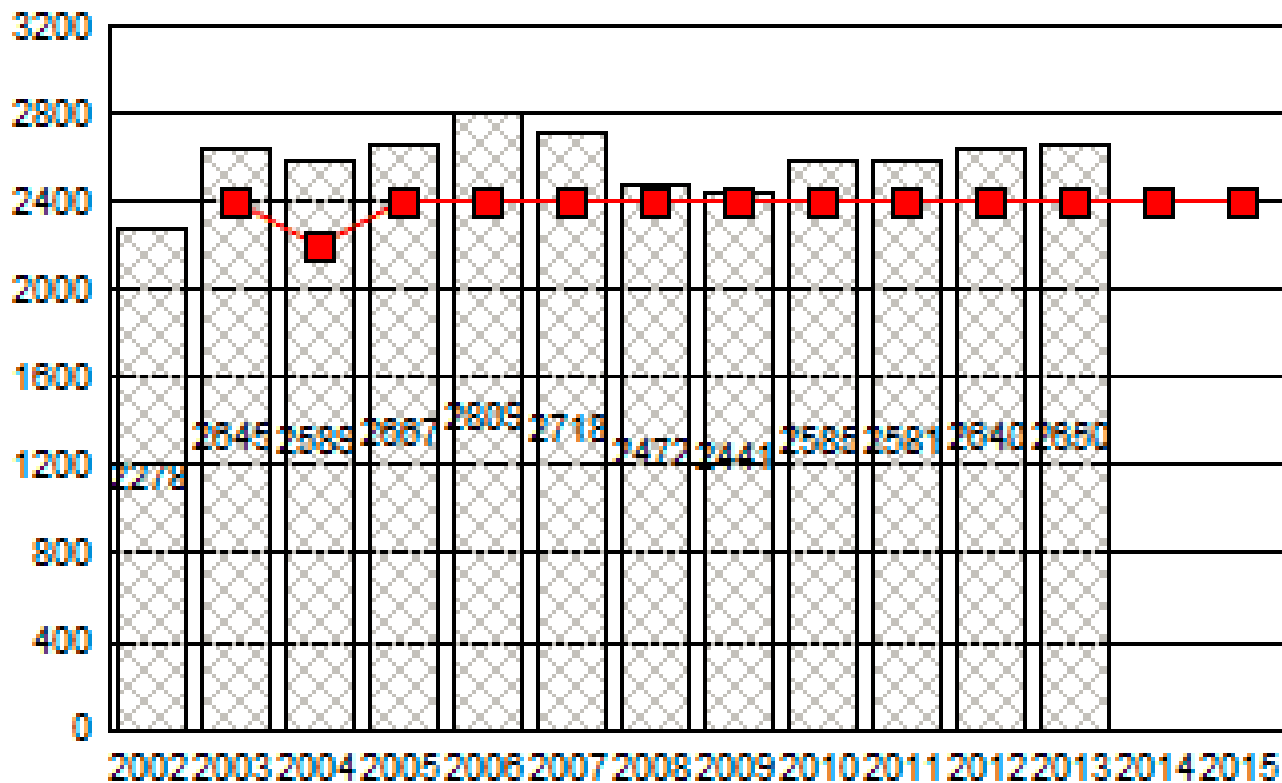
KPM #10 - Promote Efficiency in Water Right Application Processing

Percent of Water Right Applications That Receive an Initial Review within 45 Days of Application Filing



KPM #12 Promote Efficiency in Field Staff Activities

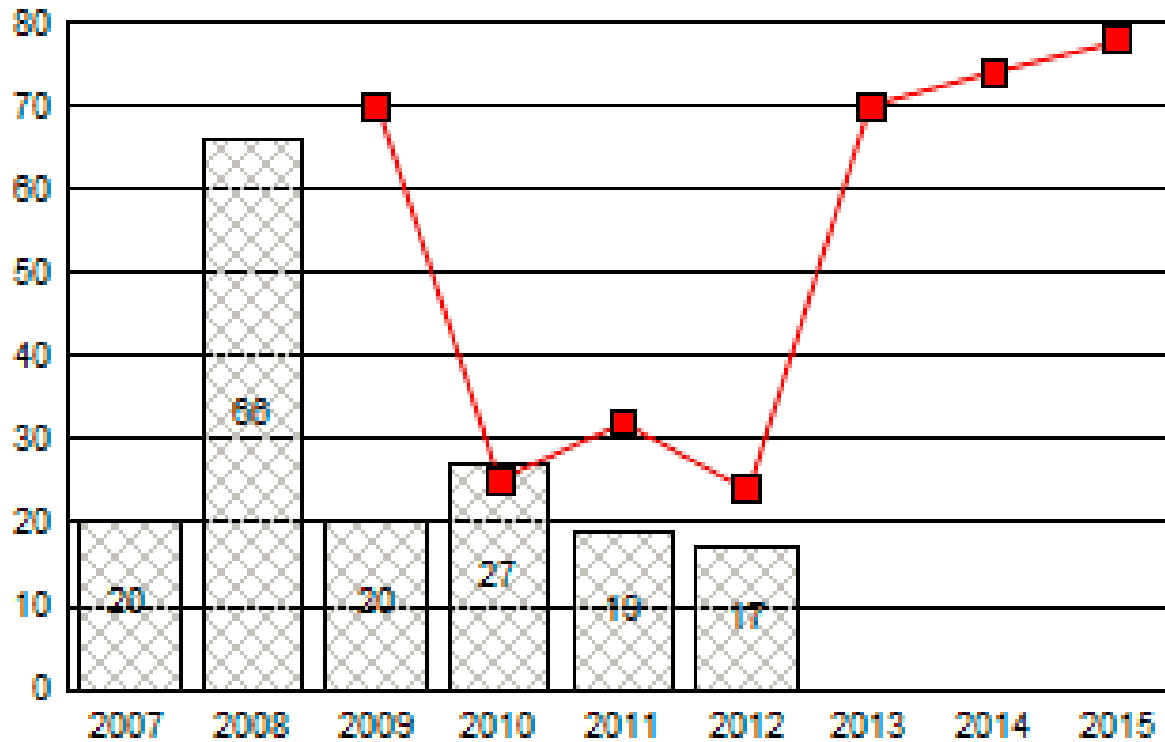
Decrease Points of Diversion per FTE of Field Staff



KPM #13

Increase Water Use Reporting

Percent of water users with an annual water-use reporting requirement that have submitted reports to the Department



Water Use Report

Choose an agency:

CITY OF CORVALLIS
 BRIAN RIGWOOD
 PO BOX 1083
 CORVALLIS, OR 97339-1083

Records per Page:

	Report ID	Facility	
Select	11299	NFR RC	Cert:33340 OR * NOR
Select	11300	STILSON CR	Cert:2356 OR * STILSO
Select	11301	G. C.	Cert:2356 OR * GRIFFI
Select	11302	NFK RC	Cert:2356 OR * MIDDLE
Select	11303	ROCK CR	Cert:3245 OR * ROCK C

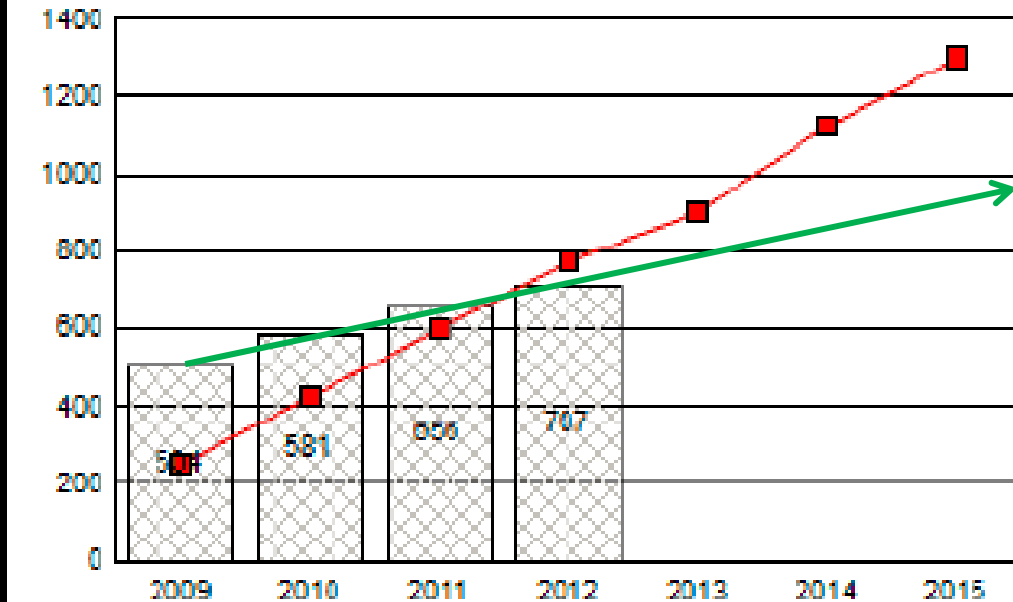
Wur Report ID: 11299

Water Year	Unit	Oct	Nov	Dec	Jan	Feb	Mar
2012	A	199.0	222.0	257.0	257.0	257.0	257.0
2011	A	257.0	257.0	257.0	257.0	257.0	257.0
2010	A	199.0	243.0	257.0	257.0	257.0	257.0
2009	A	217.0	248.0	257.0	257.0	257.0	257.0
2008	A	175.0	218.0	220.0	220.0	220.0	220.0

KPM #8

Implement Water Measurement Strategy

Number of Significant Diversions with Water Measurement Installed



Data is represented by number



Flow Meter



Weir

Summary

- Department is making progress towards 9 of its 14 key performance measures.
- 2013 Legislature has provided modest resources to help meet KPM targets.
- Department has identified opportunities to improve in KPM areas not trending towards target.
- Department will continue to monitor progress and expects to see improvements in future KPMs.