



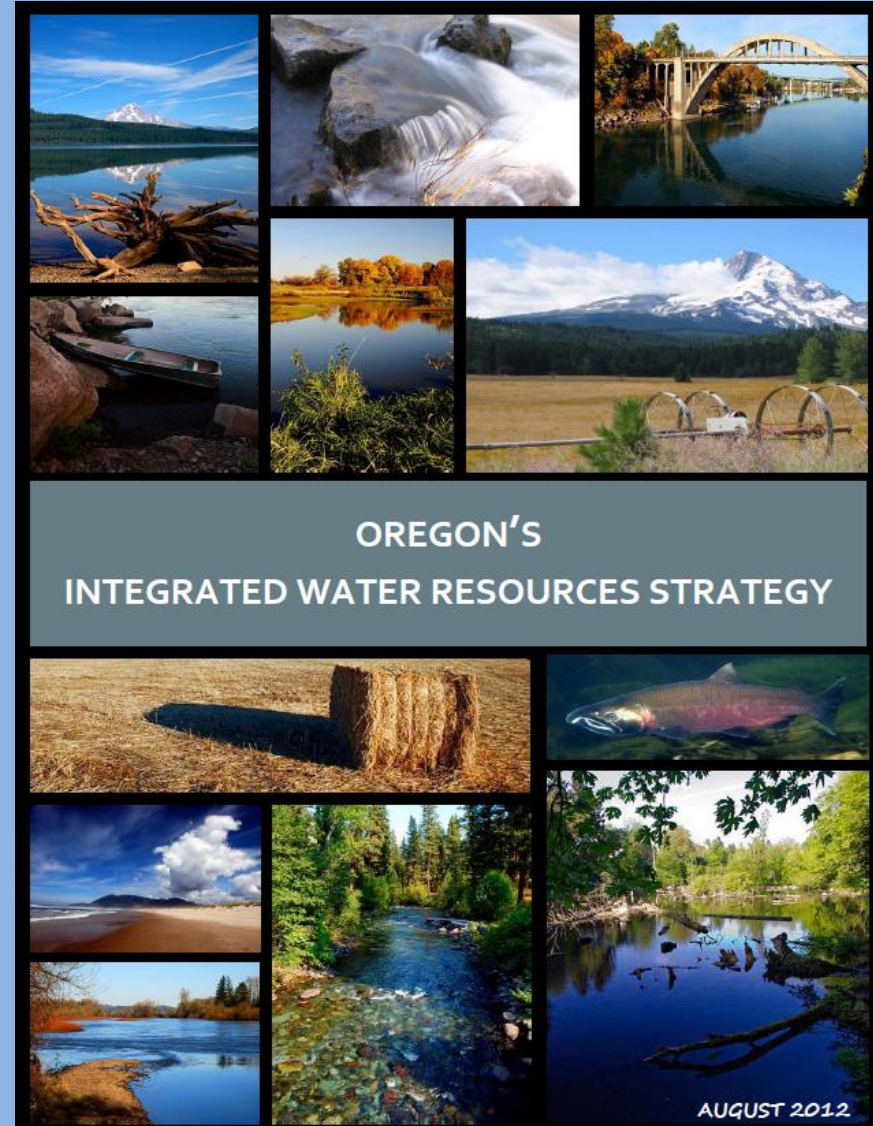
# Storage and Water Supply Development Update

**Water Resources Commission Meeting  
May 30, 2014**

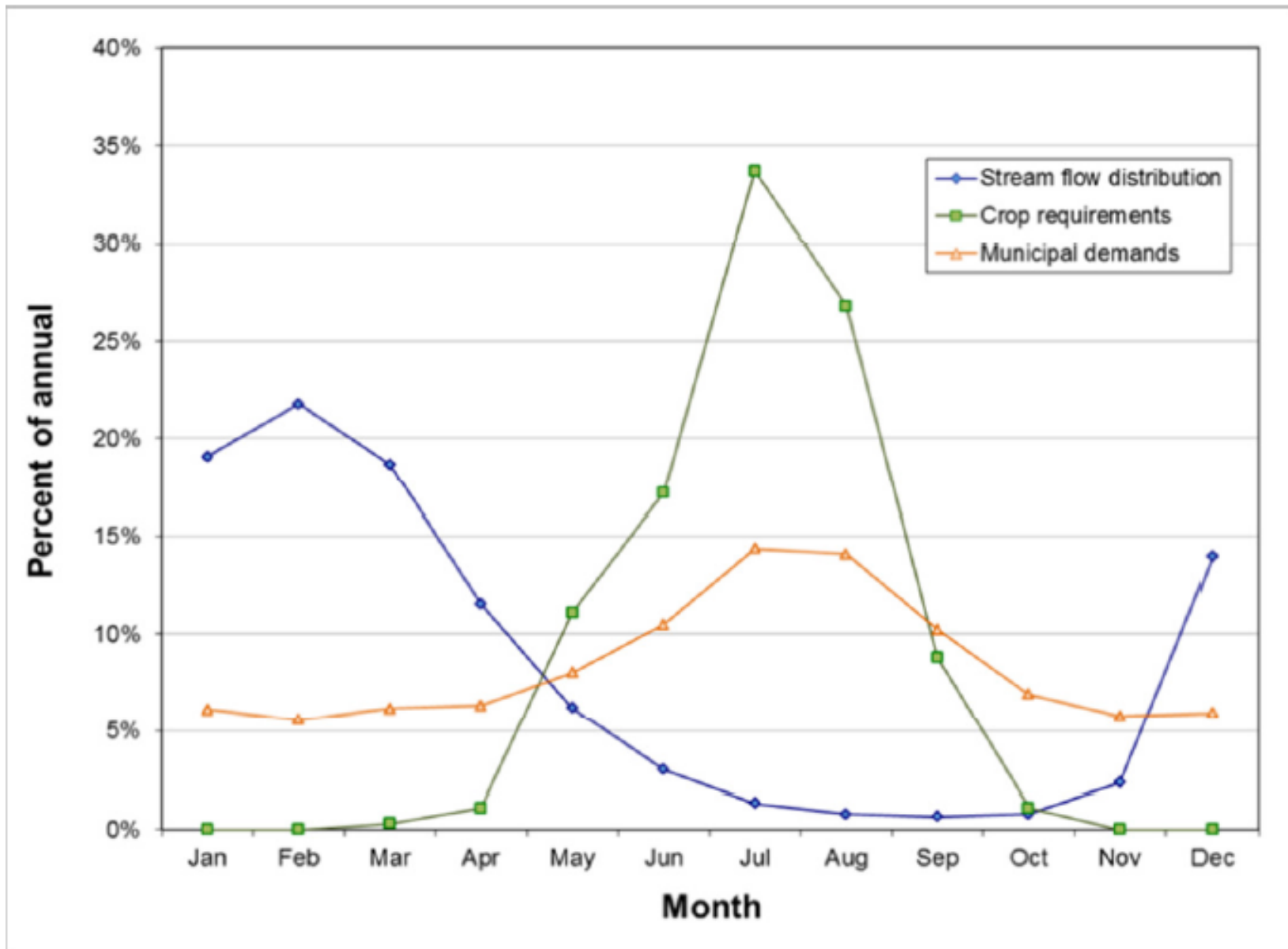
**Jon Unger, Water Supply Development Coordinator**

# BACKGROUND

- Water Supply Development in the Integrated Water Resources Strategy
- Understanding key drivers
- Opportunities to meet needs

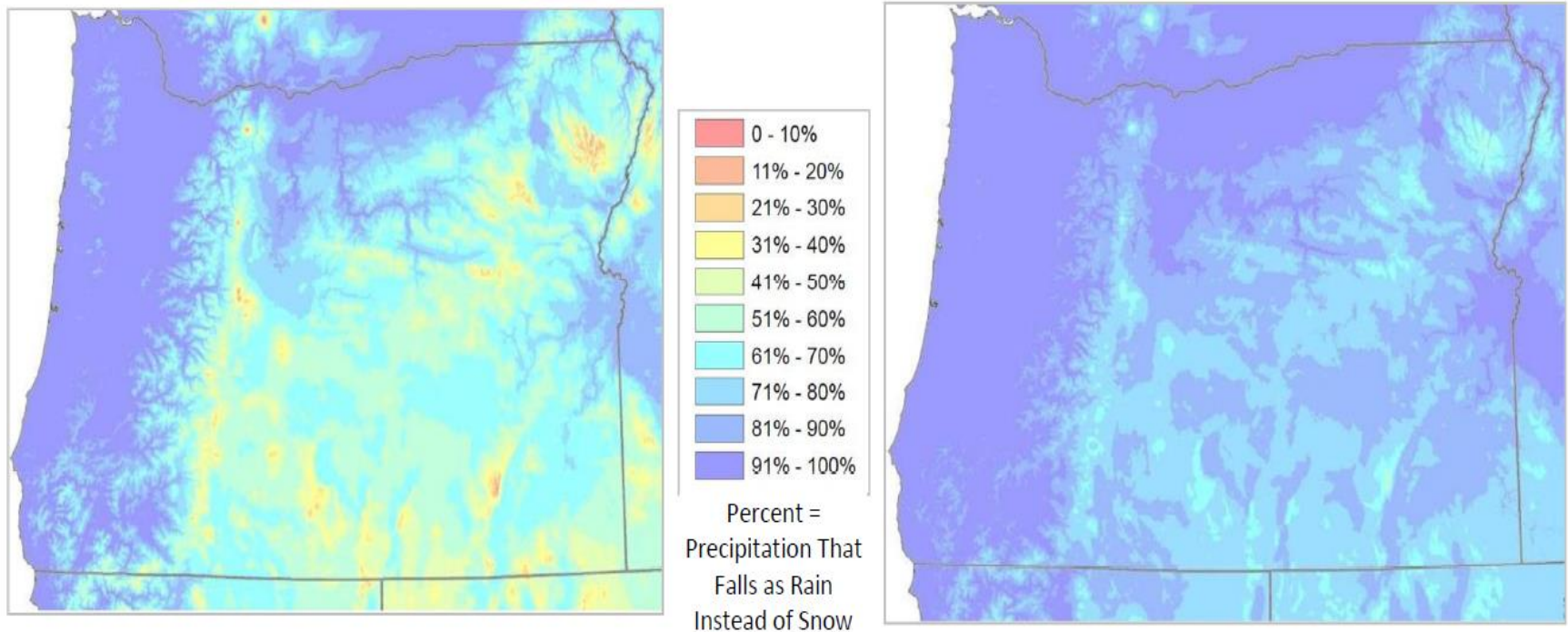


# WATER NEEDS AND TIMING OF RUNOFF



# 2050 CLIMATE SCENARIO

Figure 3. Current Precipitation Conditions Versus Future Scenario (3° C Temperature Increase) [5.4° F]



Red, yellow, and orange hues represent areas where a large percent of precipitation falls as snow.

Blue represents areas where a large percent of precipitation falls as rain.

# PROJECT UPDATE

- Similkameen Project
- Juniper Canyon Reservoir
- Wallowa Lake Dam Repair
- East Valley Water District  
Proposed Reservoir



# WATER SUPPLY DEVELOPMENT

- **Partnership between the state and local communities**
- **Identify need**
  - Place-based planning
  - Regional/Oregon Solutions
- **Take into account such factors as:**
  1. **Water Availability**
  2. **Suitability of lands for agriculture**
  3. **Current and future municipal demand**
  4. **Instream needs**
  5. **Climate change**

# IDENTIFYING OPPORTUNITIES TO MEET THE NEED

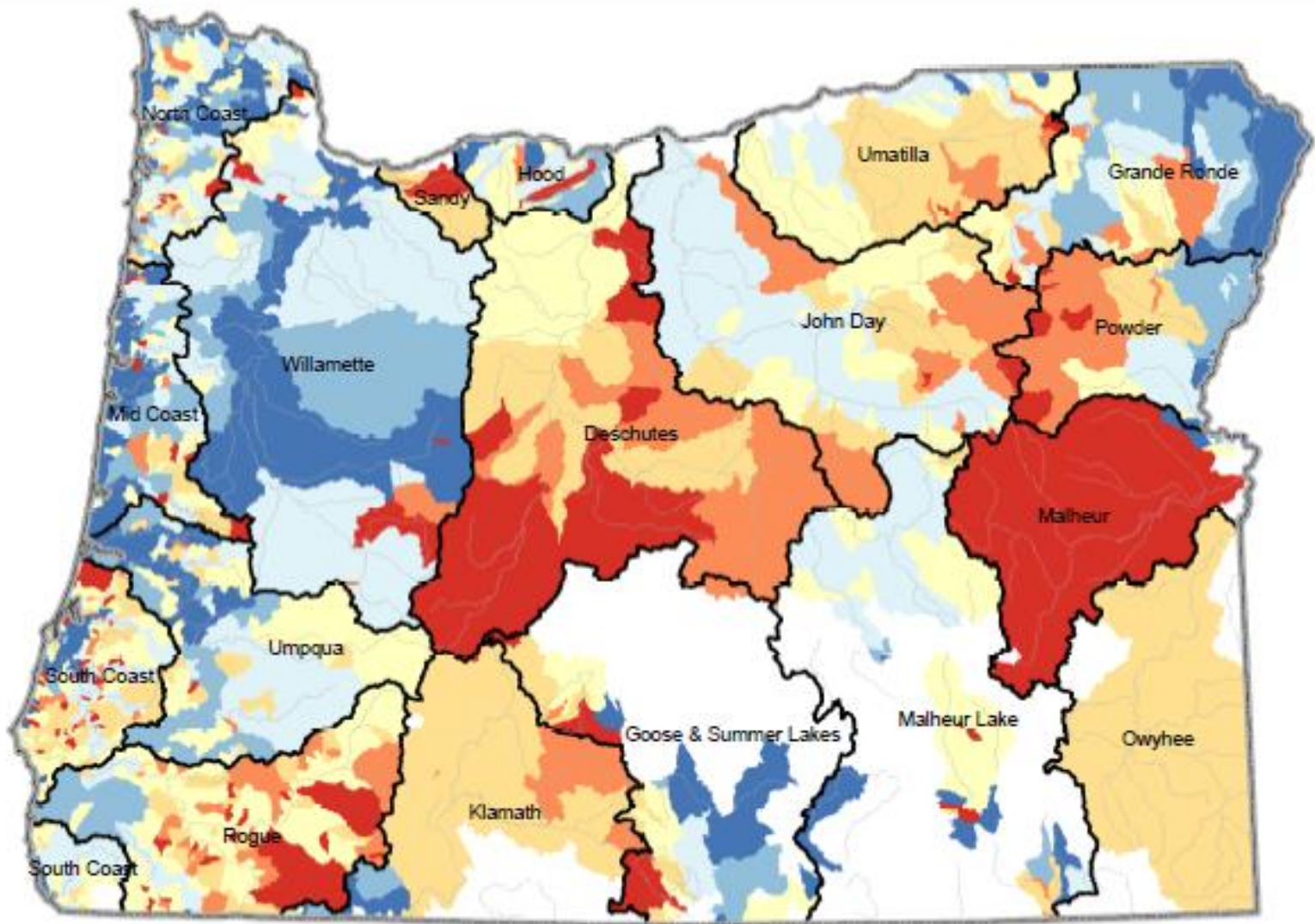
1. New or expanded storage
  2. Increased efficiency of water use
  3. Water reuse
  4. Water conservation
  5. Allocation of federally stored water
  6. Facilitating streamflow protection or restoration
- ❖ Role of planning

# DETERMINING STORAGE OPPORTUNITY

- Analyzing Water Availability
- Number of months of potential storage
- 50% Exceedence
- Other factors

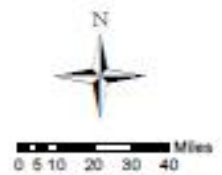
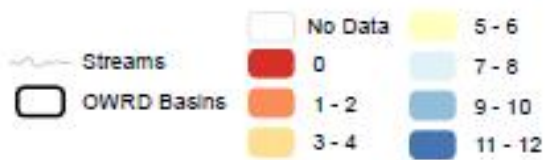






### Months of Available Streamflow Calculated at 50% Exceedance

OWRD Hydrographs (ecr), 10/15/2013, Projection: Oregon Lambert NAD 03  
 This product is for informational purposes only and may not have been prepared for or be suitable for legal, engineering, or surveying purposes. Users of the information should review or consult the primary data and information sources to ascertain the usability of the information.



## **CLOSING**

- **Access to stored water part of broader initiative**
- **Water Supply Development Team is dedicated to advancing these efforts**
- **Additional resources are being requested**

**THANK YOU**

