

Guidelines for Piloting Place-Based Integrated Water Resources Planning

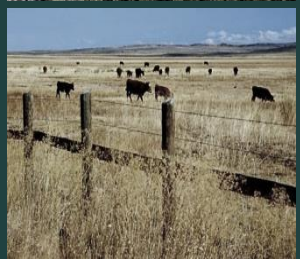


Brenda Bateman
Technical Services Division Administrator

Alyssa Mucken
IWRS Program Coordinator

Outline

- Introduction to Place-Based Planning
- Overview of the Draft Guidelines
- Policy Questions
- Next Steps



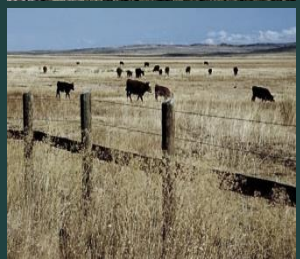
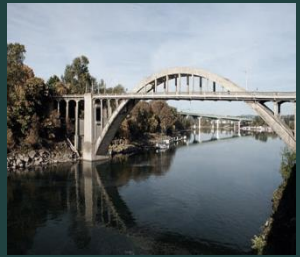
IWRS Action 9.A

Recommended Action 9.A.

“Undertake Place-Based Integrated Water Resources Planning”

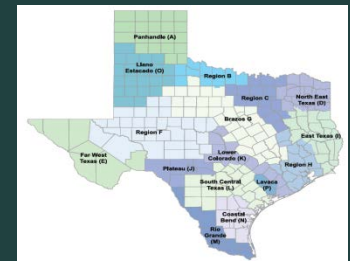
Our Commitment:

1. Develop guidelines
2. Provide technical assistance
3. Seek financial resources to help communities plan for water needs



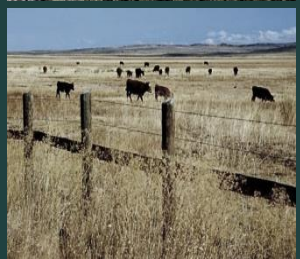
Public Outreach Efforts in 2014

- Researched other states
- Released Discussion Paper in March
- Conducted stakeholders workshops through July; took public comments
- Shared with the Commission in August



Place-Based Planning: Benefits & Elements

- A voluntary planning tool for local communities
- Provides a firmer foundation for long-term water resources management
- Follows the framework of the IWRS
- Contains 4 basic planning elements:
 - 1) Employ a collaborative & integrated process
 - 2) Characterize current water challenges
 - 3) Quantify instream & out-of-stream needs, account for coming pressures
 - 4) Identify and implement a suite of solutions



Place-Based Planning: The Fundamentals

- **Recognize the public interest in water, state authorities, and responsibilities**
- **Comply with existing state laws and policies**
- **Ensure balanced representation of all interests**
- **Have a meaningful process for public involvement**
- **Adhere to the 2012 IWRS Guiding Principles**
- **Cannot change existing laws or jeopardize existing water rights**

Overview of Draft Guidelines

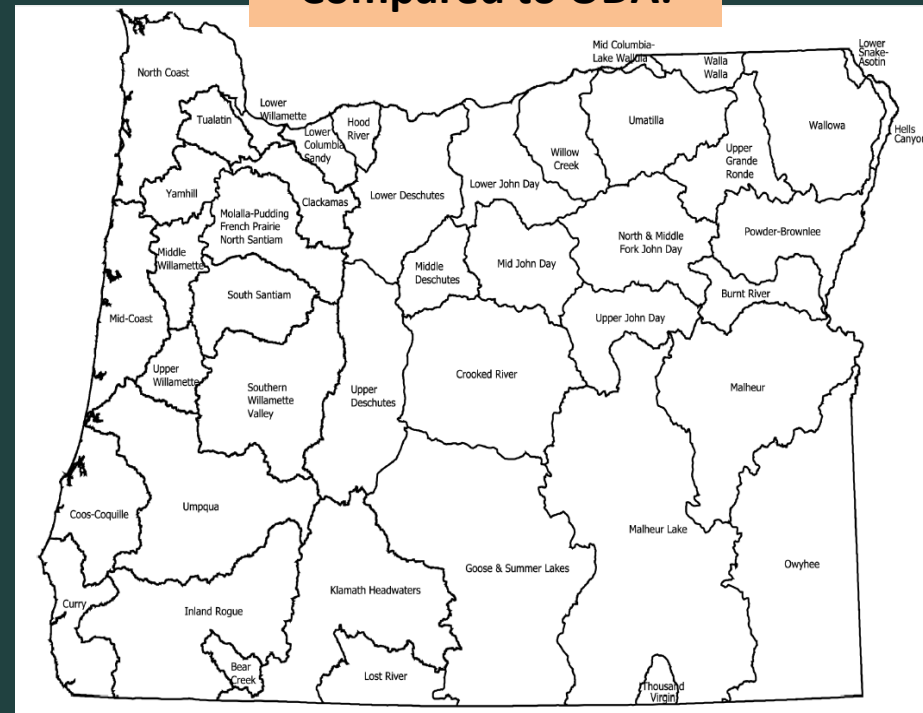
Planning Element #1: Build a Collaborative & Integrated Process

- Planning scale



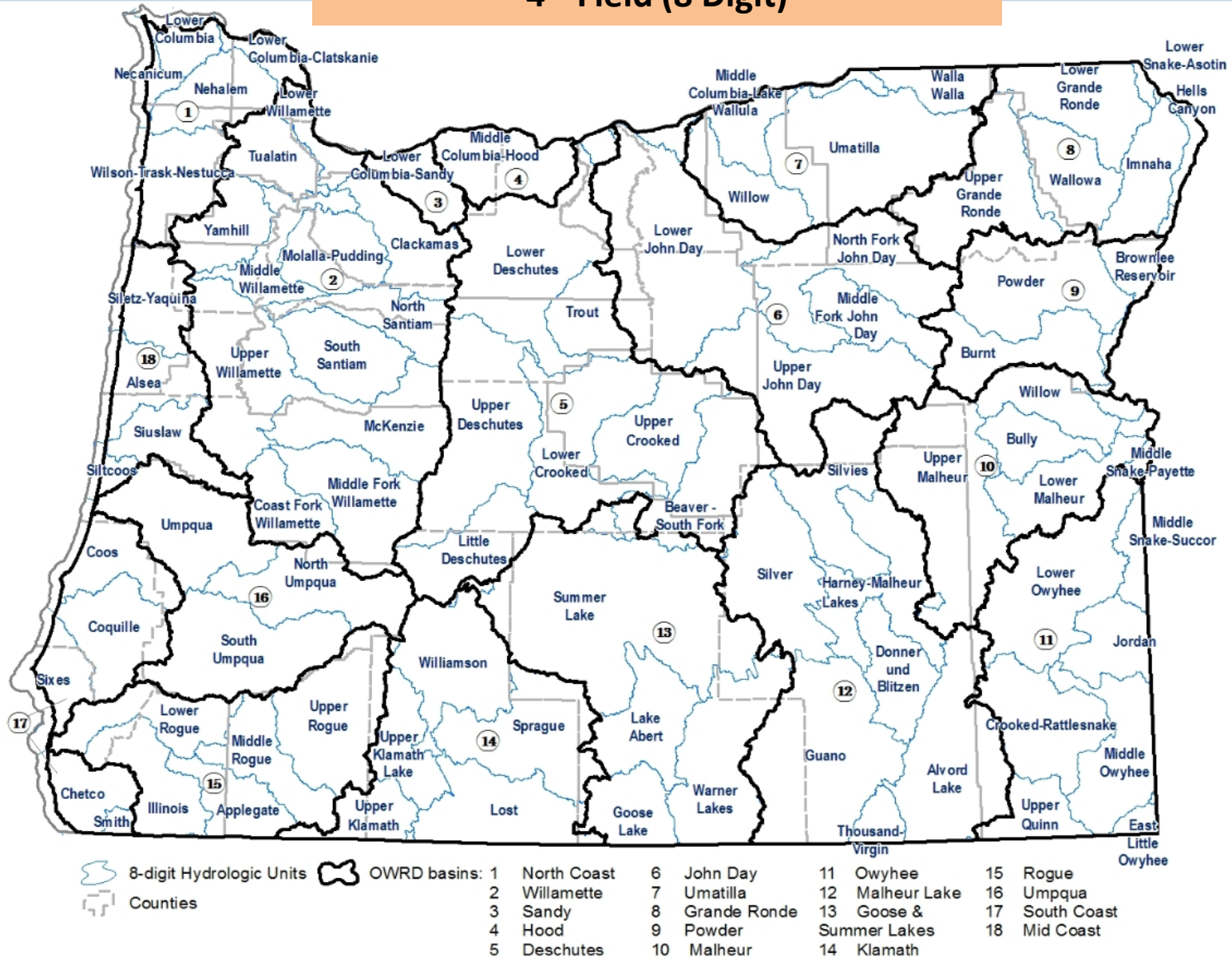
OWRD Administrative Boundaries

Compared to ODA:



AG (SB 1010) Water Quality Boundaries

Compared to a smaller scale: 4th Field (8 Digit)



Overview of Draft Guidelines

Planning Element #1:

Build a Collaborative & Integrated Process

- Planning scale
- State agencies as partners
- The convener's role
- Involving diverse interests
- Public process & consensus decision-making

Overview of Draft Guidelines

Planning Element #2

Characterize Water Resources, Water Quality, & Ecological Issues

- **The Data Gathering and Assessment Phase**
 - Consider existing plans
 - Understand what makes the community unique: social, economic, landscape conditions
 - Understand the status of surface water, groundwater, water quality, ecological health

Overview of Draft Guidelines

Planning Element #3

Define Existing and Future Needs/Demands

- **Answers the question: how much water do we need in our community, today and 50 years from now?**
 - Are consumptive uses & instream needs met today?
 - What's the history of water shortages, regulation?
 - Is our infrastructure reliable? (e.g. seismic events)
 - How will climate change affect water supplies & demands in built and natural systems?
 - Is our community vulnerable to drought, floods, or natural hazards?

Overview of Draft Guidelines

Planning Element #4

Define Integrated Solutions for Meeting Long-Term Needs

- a) Water use efficiency and conservation measures
- b) Water storage – built and natural
- c) Transfers/rotation agreements
- d) Non-traditional water supply techniques
- e) Infrastructure
- f) Watershed & habitat restoration
- g) Instream flow protections
- h) Water quality protections
- i) Monitoring

Overview of Draft Guidelines

- **Plan Adoption & Implementation**
- **Appendices**
 - **IWRS Guiding Principles**
 - **The Convener's Role & Responsibilities**
 - **Technical Resources**
 - **Quick-Guide of the Four Planning Elements**

Questions for the Commission

1. Initiating the Planning Process

- **What type of approval role, if any, should the state play in the boundary-setting phase?**
- **What is the appropriate role of the Department, if any, for reviewing the composition of the planning group?**

2. Ensuring Public Participation

- **Should groups be required to conduct meetings according to Public Meetings Law?**
- **Should a draft version of a place-based plan be made available, on a statewide basis, for public comment?**

Questions for the Commission

3. Recognition of a Place-Based Plan

- Should the Water Resources Commission play a role in recognizing or adopting a place-based plan?

4. Releasing Pilot Guidelines

- Should the Department solicit another round of formal comment?

Next Steps

- Incorporate Commission input
- Review new version with agency partners in December
- Release pilot guidelines for communities to begin testing in early 2015

