

Northwest Region District 18



**Jake Constans
Watermaster, District 18**



District 18 Boundary

- North Coast and Tualatin River Basins
- Office located in Hillsboro

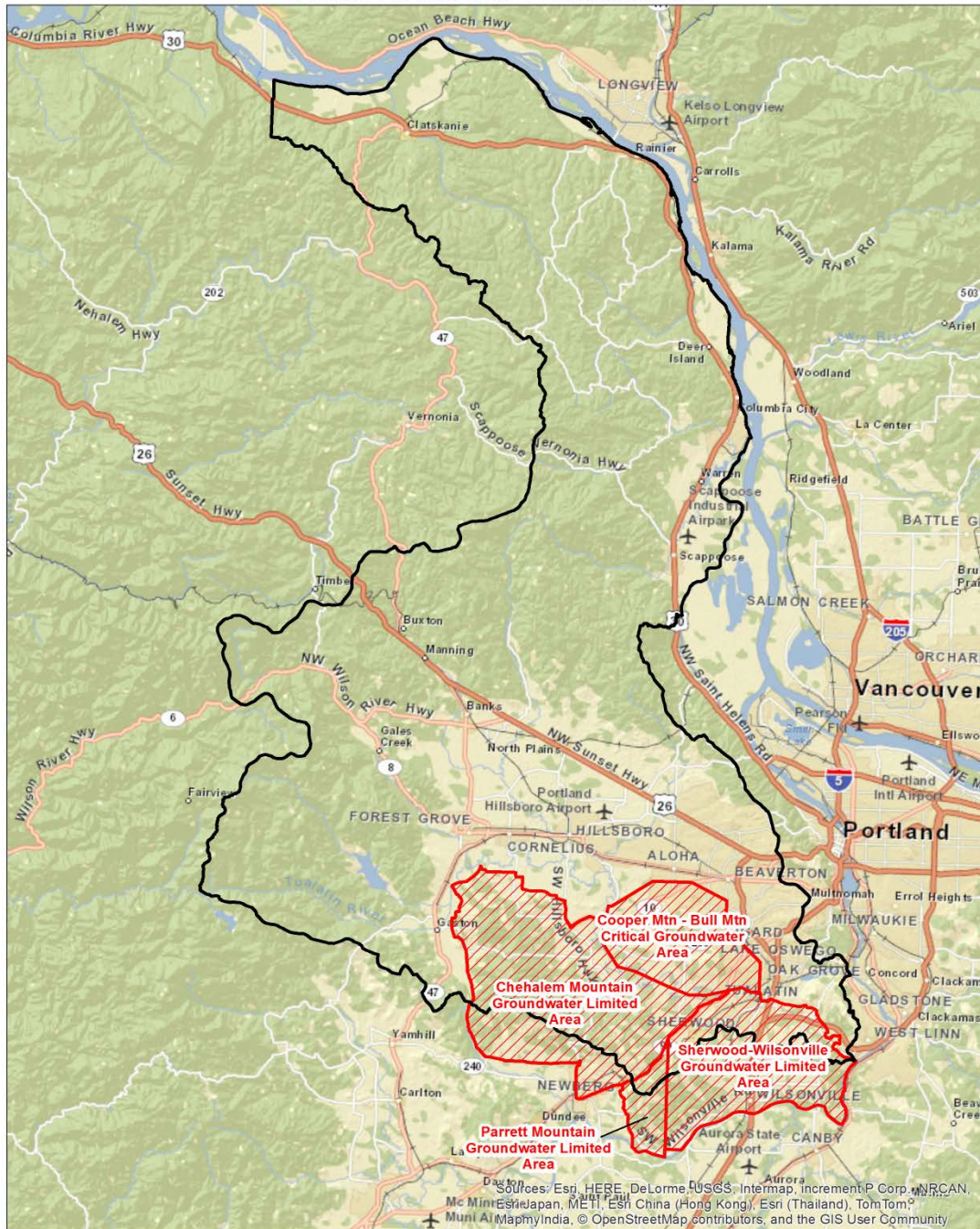
District 18 Overview

- * 18 total gaging stations, 10 real-time data
- * 1 irrigation district - Tualatin Valley ID
- * 2 decrees in the Tualatin River Basin
- * 88 statutory dams
- * 43 state observation wells in Washington and Columbia counties
- * 4 groundwater restricted areas

District 18 Water Rights

- * 54 instream water Rights
- * 295 pre 1955 groundwater registrations
- * Oldest water rights -1858 for stock/domestic & 1865 for irrigation
- * Primary water rights = 75,590 acres
- * Surface water - 58,602 acres/ 2,806 water rights
- * Groundwater – 16,981 acres/ 866 water rights

Watermaster District 18



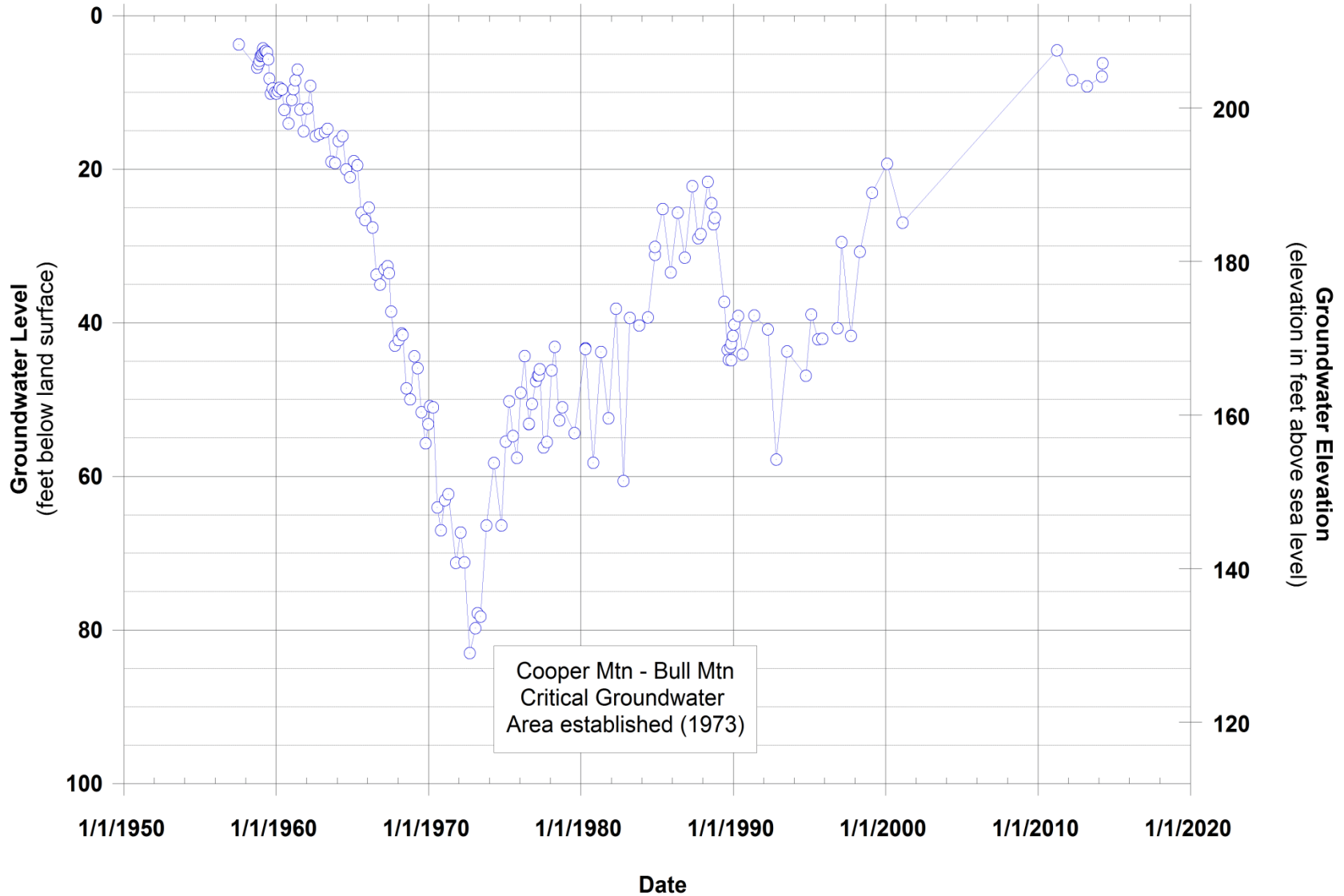
Groundwater Restricted Areas

- Cooper-Bull Mountain Critical Area 1974
- Chehalem Mountain Limited Area 1992
- Parrett Mountain and Sherwood-Wilsonville-Dammasch Limited Areas 1992

Well Depth = 403 ft
Land Surface Elev = 212 ft
Aquifer = Columbia River Basalt

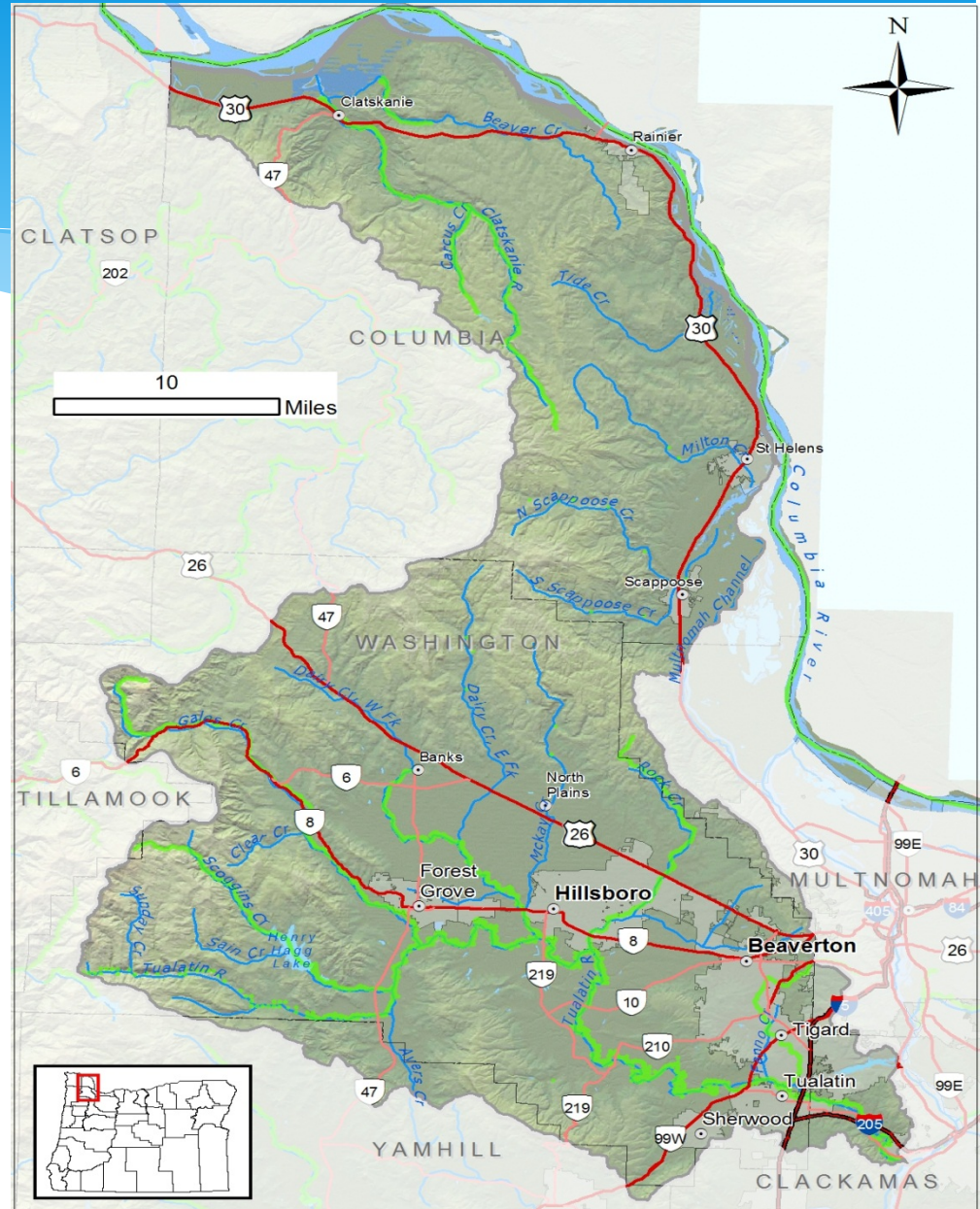
WASH 10306
SOW 938
T1S/R2W-sec 26 BDC
Farmington Nursery Parking Lot Well

—○— Water Level Below Land Surface



Dist. 18 Instream Water Rights

- * Earliest priority date in the early 1960s.
- * Unique sources – storage, treated water –live flow
- * ISWR's highlighted in neon green.



Tualatin River Flow Management Technical Committee: Members

- * **Clean Water Services**
- * **Joint Water Commission**
- * **Lake Oswego Corporation**
- * **Oregon Water Resources
Department**
- * **Tualatin Valley Irrigation
District**
- * **Washington County
Emergency Management**
- * **Washington County Parks**

TUALATIN RIVER FLOW MANAGEMENT TECHNICAL COMMITTEE

Barney Reservoir, full pool



Barney Reservoir,
after drawdown,
September 2011



2011
Annual
Report

*prepared by
Bernie Bonn for*

CleanWater Services

Barney and Scoggins Reservoirs

Barney

- 20,000 acre feet capacity
- Storage project for Joint Water Commission

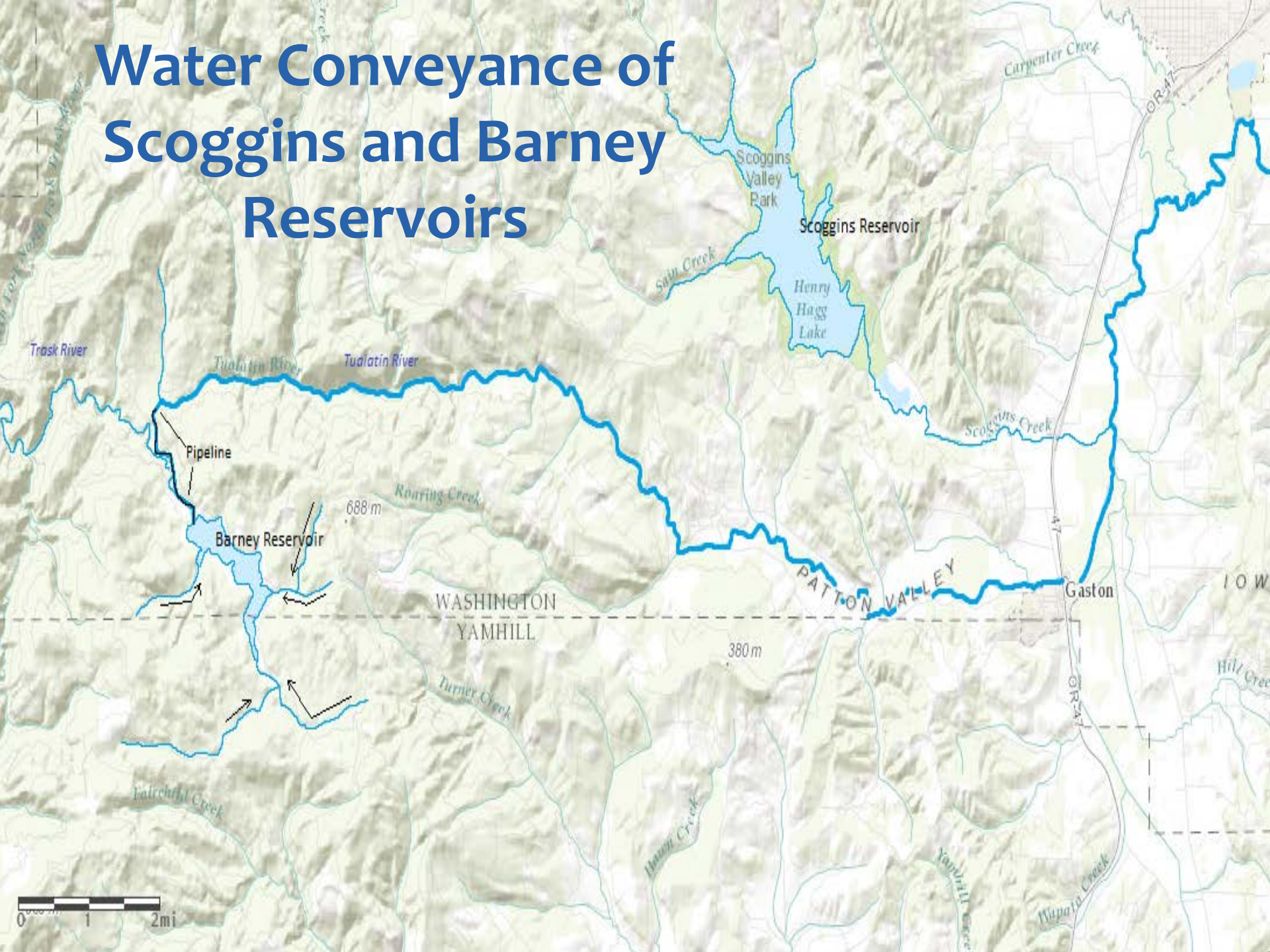


Scoggins

- 53,640 acre feet capacity
- Contracted water for irrigation, municipal, industrial, and water quality uses



Water Conveyance of Scoggins and Barney Reservoirs



Tualatin River Regulation

0800

278.14 / 28196 52.9%

Inflow: 5
Discharge: 169

Starting Date: 6/1/2014

Ending Date: 6/4/2014

Dataset: Instantaneous Flow

Graph Options: Linear Axis

Show Measurements:

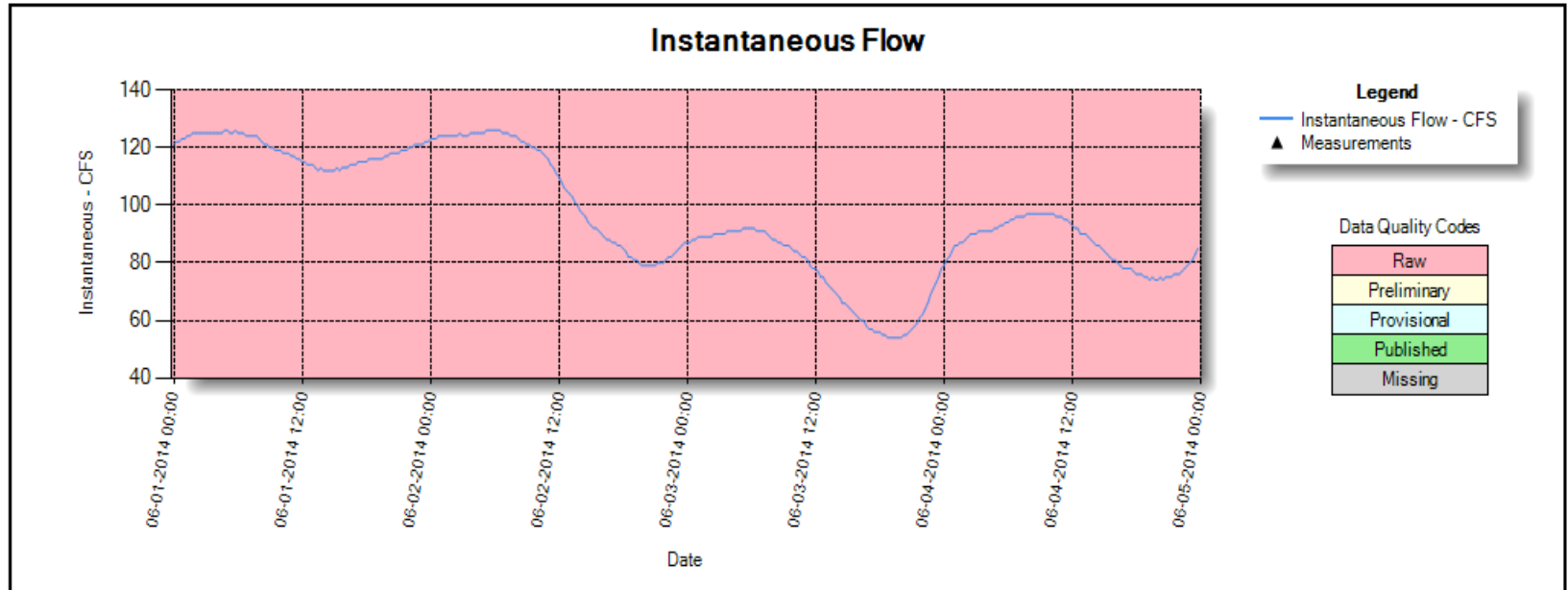
Download Format: Tab Separated

Precip: 0
High: 77
Low: 50

GSTO: 59
DLLO: 195
GALE: 13
TRGC: 93
ROOD: 91
FRMO: 175
WSLO: 204

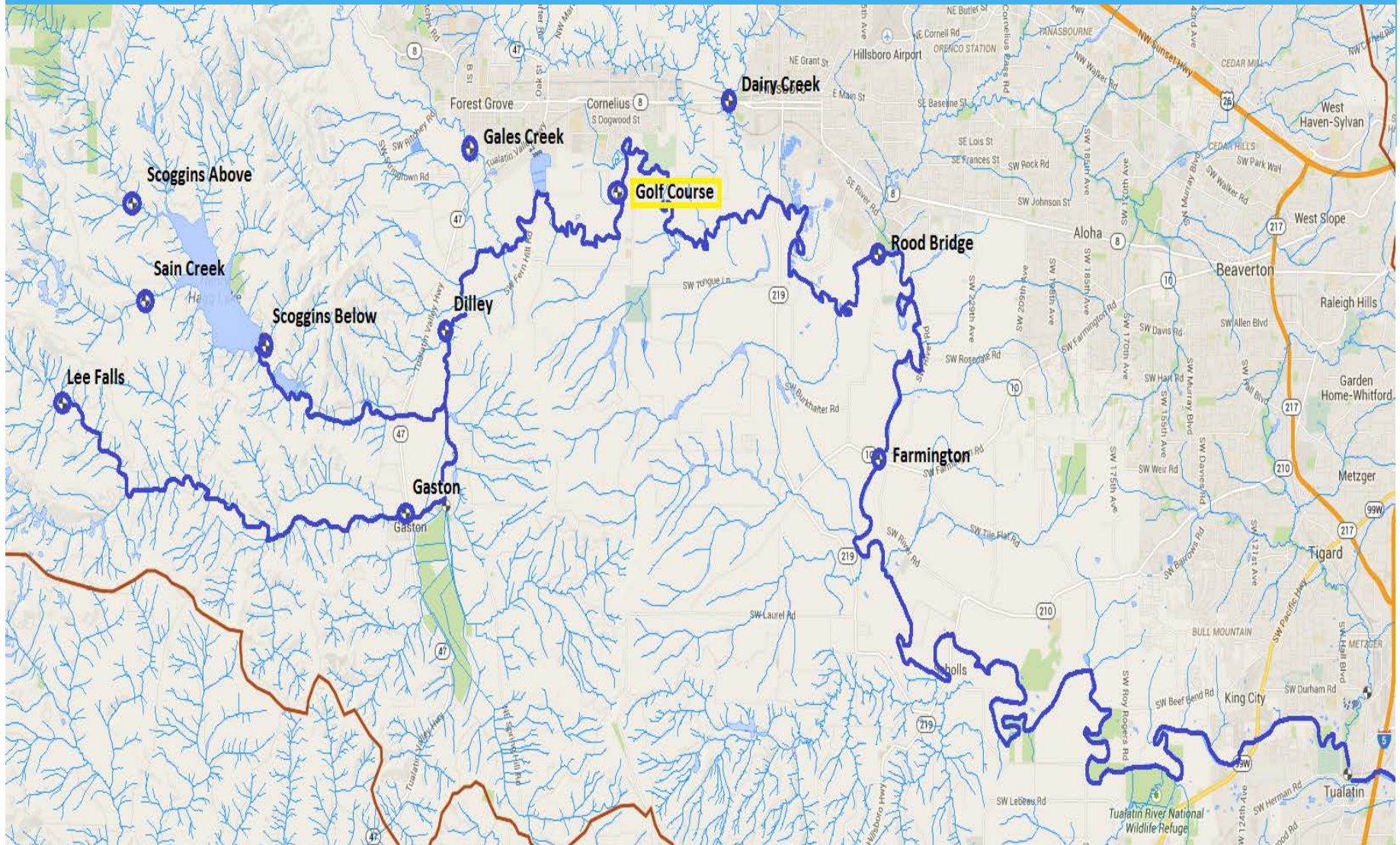
CWS: 40
JWC: 37
TVID: 80
LO: 3
OTHER: 4

CP for
John Goans
Dam Tender
Scoggins Dam
503-357-5000 / Fax 503-357-0728
john.goans@tvid.org





Tualatin River Regulation



Tualatin Regulation Summary 2014

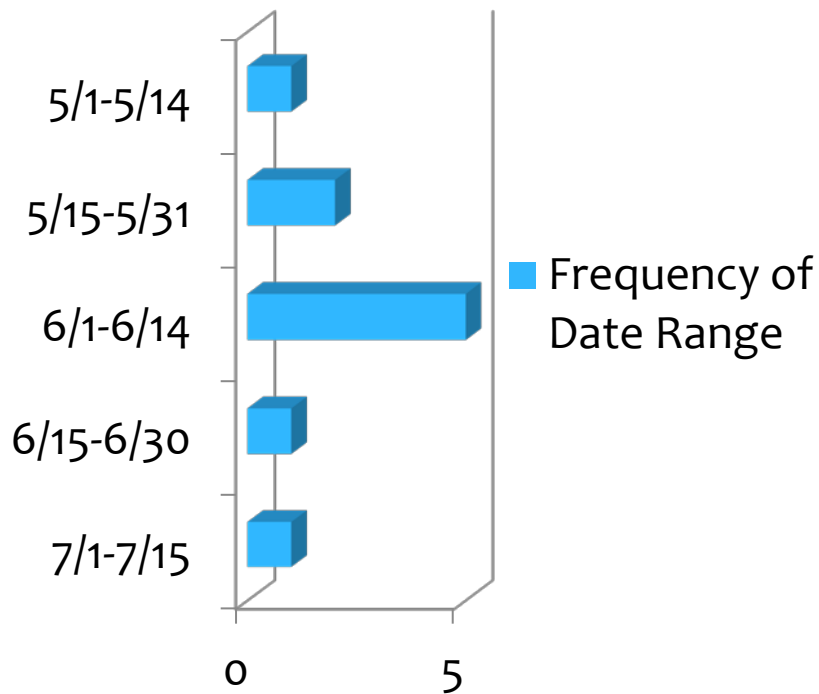
DATE	ON/OFF	STREAM NAME, NUMBER REGULATED & OLDEST PRIORITY DATE REGULATED	BACK TO	DATE	ON/OFF	STREAM NAME, NUMBER REGULATED & OLDEST PRIORITY DATE REGULATED	BACK TO
6/4/2014	OFF	City of Beaverton, P-45455, 7/15/80 – Tualatin River City of Forest Grove, P-40615, 4/28/76 – Tualatin River City of Hillsboro, P-46423, 2/6/74 – Tualatin River [Hillsboro still has 14 cfs available from the Tualatin] City of Hillsboro, P-50879, 6/9/88 – Scoggins Cr.	2/5/74	8/11/2014	OFF	McKay Creek and tributaries above Northrup Rd McKay Cr – 6, EF McKay Cr – 2	Between 5/25/66 and 10/8/76
6/11/2014	OFF	TVID, P-35792, 2/20/63, Scoggins Cr. [Partial regulation_20cfs]	2/19/63	8/11/2014	OFF	EF Dairy Cr and tributaries above RM 13 EF Dairy Cr – 12, 3/6/67	Between 5/25/66 and 10/8/76
6/20/2014	OFF	TVID, P-35792, 2/20/63, Scoggins Cr.	2/19/63	8/26/2014	OFF	Tualatin River and trib. abv Spring Hill Pump Plant Tualatin River – 22, 4/14/49; Gales Creek – 33, 4/18/49 Carpenter Cr – 7, 8/22/49; Scoggins Cr – 8, 4/15/55	Between 4/13/49 and 8/16/30
7/3/2014	OFF	Tualatin River and trib. abv Spring Hill Pump Plant Tualatin River – 11, 2/20/63; Gales Creek – 62, 9/24/63 Carpenter Cr – 4, 7/10/67; Scoggins Cr – 3, 7/28/75	2/19/63	10/22/14	ON	TVID, P-35792, 2/20/63, Scoggins Cr.	2/19/63
7/8/2014	OFF	City of Hillsboro, P-2443, 5/1/15 – Sain Creek (2 cfs)		10/22/14	ON	Stimson Lumber Co., P-10633, 4/1/32 – Scoggins Cr	
7/16/2014	OFF	City of Hillsboro, P-1136, 1/22/12 – Sain Creek (3 cfs)		10/22/14	ON	City of Hillsboro, P-2443, 5/1/15 – Sain Creek City of Hillsboro, P-1136, 1/22/12 – Sain Creek [for a total of 5 cfs]	
7/29/2014	OFF	Tualatin River and trib. abv Spring Hill Pump Plant Tualatin River – 18, 4/14/49; Gales Creek – 38, 4/18/49 Carpenter Cr – 5, 8/22/49; Scoggins Cr – 5, 4/15/55	Between 2/19/63 and 4/13/49	10/22/14	ON	City of Beaverton, P-45455, 7/15/80 – Tualatin River City of Forest Grove, P-40615, 4/28/76 – Tualatin River City of Hillsboro, P-46423, 2/6/74 – Tualatin River City of Hillsboro, P-50879, 6/9/88 – Scoggins Cr.	2/5/74

Tualatin Regulation Summary

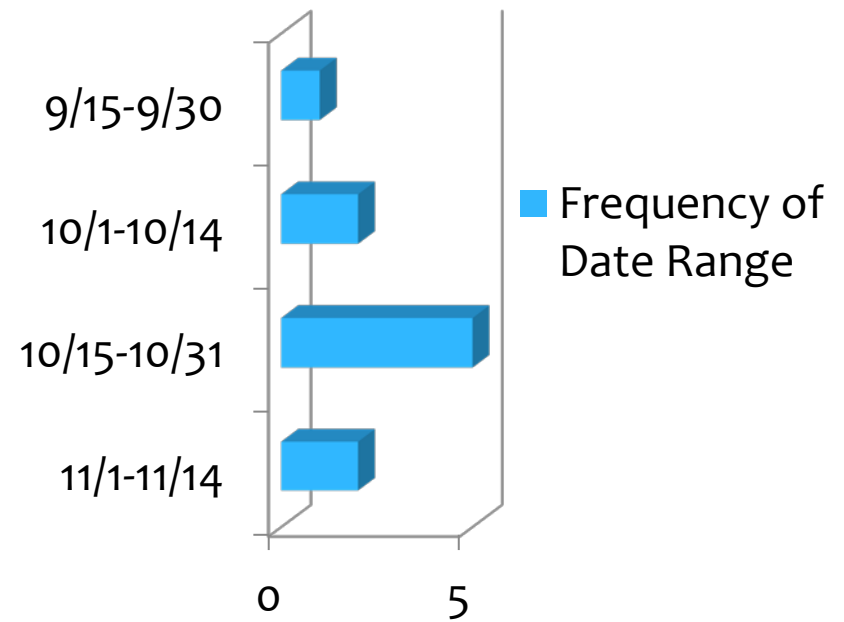
DATE	ON/OFF	STREAM NAME, NUMBER REGULATED & OLDEST PRIORITY DATE REGULATED	BACK TO
6/4/2014	OFF	City of Beaverton, P-45455, 7/15/80 – Tualatin River City of Forest Grove, P-40615, 4/28/76 – Tualatin River City of Hillsboro, P-46423, 2/6/74 – Tualatin River [Hillsboro still has 14 cfs available from the Tualatin] City of Hillsboro, P-50879, 6/9/88 – Scoggins Cr.	2/5/74

Tualatin Basin Regulation for Surface Water Rights: 2005-2014

1st Day of Regulation



Date Back onto Natural Flow



Stakeholder Engagement and Relationships

- * **Washington County**
- * **Joint Water Commission, local municipalities**
- * **Tualatin Valley Irrigation District**
- * **Clean Water Services**
- * **Columbia and Washington County SWCD's and USDA offices**
- * **Tualatin River Watershed Council**
- * **Water right holders and land owners**
- * **Other governing agencies: ODFW, DEQ, DSL, etc.**

Questions?

