




Oregon

Kate Brown, Governor

Water Resources Department
North Mall Office Building
725 Summer Street NE, Suite A
Salem, OR 97301-1271
503-986-0900
FAX 503-986-0904

MEMORANDUM

TO: Water Resources Commission

FROM: Thomas M. Byler, Director 

SUBJECT: Agenda Item E, February 25, 2016
Water Resources Commission Meeting

Place-Based Integrated Water Resources Planning Pilot Funding Recommendations

I. Introduction

Over the past several months, the Department has been conducting a review of Letters of Interest received for grants to conduct a place-based approach to integrated water resources planning. During this agenda item, staff will summarize the Letters of Interest received, provide an overview of the review process, and present funding recommendations for consideration by the Commission.

II. Background

Recommended Action 9A of the 2012 Integrated Water Resources Strategy (IWRS) calls for undertaking a place-based approach to integrated water resources planning. Place-based integrated water resources planning is a voluntary, locally initiated and led effort in which a balanced representation of water interests within a hydrologic area (e.g., basin or watershed), work in partnership with the state to understand their instream and out-of-stream water resources needs and identify solutions to meet those needs. In 2015, the legislature provided the Department with \$750,000 for grants to pilot place-based integrated water resources planning.

III. Solicitation process

The Department solicited Letters of Interest for place-based planning grants from October 8 to December 7, 2015. The Department distributed the announcement via multiple mailing lists and to interested partners and stakeholders. Staff also gave presentations to various groups and potential pilot conveners about the opportunity.

Department staff responded to over 80 inquiries about place-based planning during the solicitation period and sustained communication with potential applicants via phone, email, in-person conversations, conference calls and meetings. Staff attended 10 meetings across the state to discuss this opportunity with broader stakeholder groups; held pre-application meetings with 10 applicants; and reviewed draft Letters of Interest, as requested, for 8 applicants. All

applicants received some form of assistance during the solicitation period. Staff also assembled a list of FAQs to assist applicants.

In late November, an applicant requested that the Department consider a deadline extension for the Place-Based Planning Letters of Interest. After reviewing the schedule, the Department decided to maintain the current deadline, in order to initiate planning in pilot areas by spring 2016. In order to facilitate timely submission of Letters of Interest while being responsive to stakeholder concerns, the Department allowed potential conveners to submit a supplemental memo two weeks after the deadline.

IV. Letters of Interest received

The Department received 16 Letters of Interest from places across the state (see Attachment 1 for a map). Letters of Interest ranged from very brief (3 pages) to longer narratives (9 pages) with detailed information and attachments (ranging from 3-47 pages). Applicants took advantage of the opportunity to submit additional materials after the deadline. As shown in Table 1 below, requests for pilot funding ranged from \$135,000 to \$350,000, totaling roughly \$3.6 million.

Table 1. Letters of Interest submitted for place-based planning pilot grants

| Letter of Interest | WRD Region | Funding Request |
|---------------------------|-------------------|------------------------|
| Upper Grande Ronde | Eastern | \$197,000 |
| North Powder | Eastern | \$350,000 |
| Malheur Lake | Eastern | \$205,500 |
| Lower John Day | North Central | \$190,000 |
| Walla Walla | North Central | \$135,000 |
| North Coast | Northwest | \$200,000 |
| Upper Willamette | Northwest | \$269,400 |
| Eola-Amity/Walnut Hills | Northwest | \$233,100 |
| Polk County | Northwest | \$225,000 |
| Pudding | Northwest | \$300,000 |
| South Santiam | Northwest | \$150,000 |
| Tualatin | Northwest | \$225,000 |
| Mid-Coast | Northwest | \$330,300 |
| Klamath ¹ | South Central | \$250,000 |
| Rogue | Southwest | \$175,000 |
| Lower Rogue | Southwest | \$187,500 |
| Total Requested | | \$3,622,800 |

V. Overview of pilot review process

Best practices from other grant programs informed the review process. The review process consisted of three primary components: public comment, internal review, and inter-agency review.

¹ After further conversations with others in the basin, the convener withdrew the Letter of Interest.

Public comments – All materials were posted online (<http://bit.ly/owrdplanning>). The Department accepted written comments on the Letters of Interest during a three-week period from December 16, 2015 through January 6, 2016.

Internal review – Materials were reviewed by a number of staff from various divisions in the Department.

Inter-agency review – Agency partners participated in an inter-agency review to evaluate the Letters of Interest and supporting materials. These partners included: Business Oregon, Oregon Department of Agriculture, Oregon Department of Environmental Quality, Oregon Department of Fish and Wildlife, Oregon Department of Forestry, Oregon Department of Land Conservation and Development, Oregon Health Authority, and the Oregon Watershed Enhancement Board.

Evaluation Factors – Letters of Interest were evaluated against a set of review factors. The review factors included:

- *Evaluation criteria* – Criteria to identify strengths and weaknesses of the proposals in the areas of leadership, partnerships, capacity, integration, planning needs/outcomes, approach, need for assistance, readiness, and likelihood of developing a plan in 2-3 years.
- *Variation among pilots* – Factors that allow for testing place-based planning in places with different characteristics were considered, such as geography, scale, type of convener, capacity, proposed approach, and background in water planning and collaborative planning.
- *Public comments* – The Department received 23 comments on the Letters of Interest (Attachment 2), which were considered as part of the internal and inter-agency reviews.

The Department, with input from the inter-agency review team, used the review factors above to sort proposals into four groups based on the strength of their proposal. Characteristics of each group are as follows:

- *Group A* – Proposals demonstrate strengths in all of the criteria, have a moderate need for assistance, demonstrate readiness, and have a high likelihood of completing a plan in 2-3 years. This group includes [Lower John Day](#), [Tualatin](#), [Upper Grande Ronde](#), and the [Upper Willamette](#).
- *Group B* – Proposals performed well in the evaluation criteria, have emerging partnerships, a high need for assistance, demonstrate readiness, and present interesting opportunities to test place-based planning in areas that have a high need and desire to pursue more integrated and collaborative approaches. This group includes [Malheur Lake](#), [Mid-Coast](#), [Pudding](#), [Rogue](#) and [Walla Walla](#).
- *Group C* – Proposals have capable leadership and emerging partnerships, but they did not perform as well in some of the criteria, and aspects of the approach need to be strengthened. This group includes [North Coast](#), [Polk County](#), and [South Santiam](#).
- *Group D* – Proposals did not provide adequate information to evaluate some criteria, are at the initial phases of initiating a collaborative effort, and aspects of the approach need to be strengthened. This group includes [Eola Amity/Walnut Hills](#), [Lower Rogue](#), and [North Powder](#).

VI. Pilot recommendations

The Department was very pleased with the number of applications received for place-based planning grants. With any new pilot program, it is always gratifying to see a strong level of interest as was evident with this grant offering. When the demand (total requests of \$3.6 million) greatly exceeds available funds (\$750,000), it becomes challenging to determine how to best distribute the grants.

The inter-agency team suggested considering grant funding for pilot areas from both Group A and Group B. In doing so, the pilot would explore the effectiveness of funding areas likely to complete a place-based plan within a reasonable period of time (Group A), and those areas that have a high need (Group B). Department staff agree with this approach. The Department recommends funding the following four pilot areas as shown in Table 2.

Table 2. Place-Based Planning Pilot Funding Recommendations

| Letter of Interest ID | Funding Requested | Funding Recommended |
|--------------------------|-------------------|--------------------------|
| E-08-06-UpperGrandeRonde | \$197,000 | \$197,000 (Full Fund) |
| NC-06-21-LowerJohnDay | \$190,000 | \$190,000 (Full Fund) |
| NW-18-01-MidCoast | \$330,300 | \$135,000 (Partial Fund) |
| E-12-10-MalheurLake | \$205,500 | \$135,000 (Partial Fund) |
| Totals | \$892,500 | \$657,000 |

All four recommended pilots have strong local leadership and performed well in all evaluation criteria. In addition, the recommendations include geographic diversity, proposing to fund pilots in the Department's North-central region, Northwest region, and Eastern Region.

More specifically, the Department recommends full funding for the **Upper Grande Ronde** and **Lower John Day**, because both proposals (1) clearly communicate the qualities that make them a good pilot and the benefits they would receive from place-based planning, and (2) will likely develop a plan within 2-3 years. In addition, the Upper Grande Ronde builds on prior collaborative work around water resources and clearly communicates a local commitment to innovative approaches. The Lower John Day builds on an existing partnership with a governance agreement, and presents a timely opportunity to test integration with the OWEB Strategic Action Planning process.

Partial funding for the **Mid-Coast** and **Malheur Lake**, is recommended, because both pilots would: (1) provide significant learning opportunities during the pilot phase, and (2) work through Planning Steps 1-3 over the next 2-3 years with partial funding. In addition, the Mid-Coast presents the opportunity to maintain local momentum towards a more collaborative and integrated approach in a basin with distributed water challenges. Malheur Lake provides a timely opportunity to pursue a collaborative partnership that will consider options to meet long-term water needs in a sustainable manner.

If funded by the Commission, each of these pilot areas would work with the Department to ensure their approach follows the Place-Based Planning Guidelines that will lead to the development of a Place-Based Integrated Water Resources Plan. Allocation of funding will be

ted to milestones that correspond with the Planning Steps in the Place-Based Planning Guidelines.

Staff also recommend the remaining \$93,000 be held in reserve for future consideration by the Commission. These funds could be used in several ways, including providing smaller grants to assist with Planning Step 1 (*Build a Collaborative and Integrated Process*) for the existing pool of Letters of Interest that were received. This could help these communities leverage other resources and provide additional learning opportunities during the pilot phase.

The Department posted the pilot funding recommendations online for public comment from February 10 through 18. A summary of public comments received is attached.

VII. Conclusion

After a thorough review process, the Department recommends funding four Place-Based Planning Pilots: full funding for the Upper Grande Ronde (\$197,000) and Lower John Day (\$190,000) as well as partial funding for Mid-Coast (\$135,000) and Malheur Lake (\$135,000). If approved, these recommendations would result in grant awards totaling \$657,000.

Following the Water Resources Commission meeting, the Department will offer additional opportunities to provide input on Place-Based Planning implementation, including lessons learned during the grant solicitation and review process and opportunities for improvement during the pilot phase.

VIII. Alternatives

The Commission may consider the following alternatives:

1. Adopt the funding recommendations contained in Table 2 of section VI of this report, to fund four pilots for the total award of \$657,000 with a reserve fund of \$93,000.
2. Adopt modified funding recommendations.
3. Direct the Department to further evaluate the applications and return with a revised funding proposal.

IX. Director's Recommendation

The Director recommends Alternative 1, to adopt the funding recommendations contained in section VI of this report, to fund four pilots for the total award of \$657,000 with a reserve fund of \$93,000.

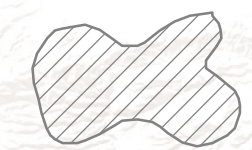


Attachments:

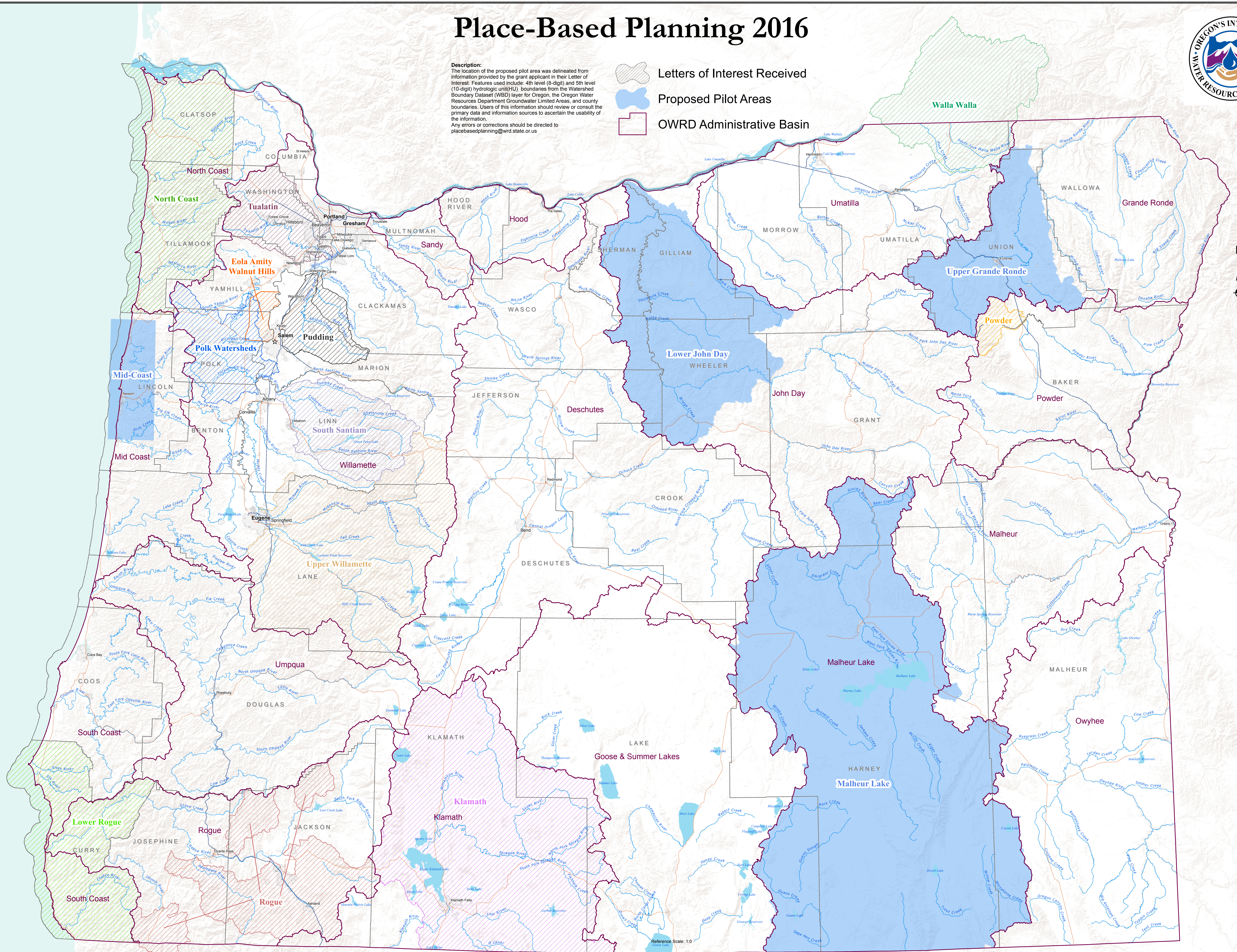
1. Map of Letters of Interest received
2. Summary of public comments received on Letters of Interest
3. Summary sheets for Letters of Interest
4. Summary of public comments received on Department recommendations

Place-Based Planning 2016



Description:
 The location of the proposed pilot area was delineated from information provided by the grant applicant in their Letter of Interest. Features used include: 4th level (8-digit) and 5th level (10-digit) hydrologic unit (HU) boundaries from the Watershed Boundary Dataset (WBD) layer for Oregon, the Oregon Water Resources Department Groundwater Limited Areas, and county boundaries. Users of this information should review or consult the primary data and information sources to ascertain the usability of the information. Any errors or corrections should be directed to placebasedplanning@wrdd.state.or.us

-  Letters of Interest Received
-  Proposed Pilot Areas
-  OWRD Administrative Basin



Map produced by:
 Oregon Water Resources Department
 725 Summer St. NE, Suite A
 Salem, OR 97301
 Date: 2/16/2016

Document Path: G:\dev\place_based\map_production\ArcMap\Place-Based_Planning_Pilot_Areas_2015.mxd



Sources:
 Proposed Pilot Areas: Oregon Water Resources Department, 2015
 OWRD Administrative Basins: Oregon Water Resources Department, 2015
 Hydrography: Oregon Water Resources Department, 2015
 Roads: Oregon Department of Transportation, n.d.
 Hillshade produced by 10 meter Digital Elevation Model,
 US Geological Survey, 1999

Sources: Esri, USGS, NOAA



Public Comments on Letters of Interest

Place-Based Integrated Water Resources Planning Grant

The Department received a total of 23 comments on the Letters of Interest submitted for the Place-Based Planning Pilot Grants. A high-level summary of the comments is included in the table below. Actual comments are included in the following pages of this document. These comments were discussed and considered during the inter-agency review team meeting.

Table 1. Summary of Public Comments

| Number | Letter of Interest | Summary of Comments |
|--------|--------------------------|--|
| 3 | General | Two comments express support of place-based planning and urge the Department to fund only those efforts that are most aligned with the IWRS principles and existing place-based planning documents (including Senate Bill 266). One comment urges the Department to only fund efforts that cover issues that fall within the Department's purview, are led by an impartial convener, and include diverse stakeholder engagement. |
| 9 | NW-02B-16-Pudding | Some of the comments emphasize the need and opportunities present in the Pudding River Watershed. All comments express support for the proposed place-based planning effort. One comment emphasizes the readiness of the proposed effort. |
| 5 | SW-15-13_14_19-Rogue | Some of the comments emphasize the need and opportunities present in the Rogue River Basin. All comments express support for the proposed place-based planning effort. |
| 4 | SC-14-17-Klamath | One comment emphasizes the need for creative problem solving in the Klamath through a program like place-based planning. Two comments express support for the proposed effort in the Klamath Basin. One comment points out that outreach was not conducted to a particular key partner. One comment asks whether the Department will assess qualifications of entities prior to paying them for a specific scope of work. |
| 3 | NW-01-01-NorthCoast | Two comments emphasize the need and express support for the proposed effort in the North Coast Watersheds. One comment expresses concern that this effort will not involve a balanced representation of interests, questions the appropriateness of a co-convener, and urges the Department not to fund areas where water quality is the primary driver. |
| 2 | NW-18-01-MidCoast | One comment emphasizes the need and expresses support for the proposed effort in the Mid-Coast Watersheds. One comment questions whether building resilience to natural hazards (earthquakes and tsunamis) should be covered under place-based planning. |
| 1 | SW-17-19-LowerRogue | One comment expresses concern that this effort will not involve a balanced representation of interests, questions the appropriateness of the convener and urges the Department not to fund areas where water quality is the primary driver. |
| 1 | E-08-06-UpperGrandeRonde | One comment expresses support for the proposed effort in the Upper Grande Ronde watershed. |
| 1 | E-12-10-MalheurLake | One comment expresses support for the proposed effort in the Malheur Lake Basin. |

General Comments

Name (Affiliation): Mary Anne Nash (Oregon Farm Bureau), Katie Fast (Oregonians for Food and Shelter), Heath Curtiss (Oregon Forest and Industries Council)

Comment: See Attachment 1

Name (Affiliation): Leslie Bach (The Nature Conservancy)

Comment: See Attachment 2

Name (Affiliation): Tracy Rutten (League of Oregon Cities), Mark Landauer (Special Districts Association of Oregon)

Comment: See Attachment 3

NW-02B-16-Pudding

Name (Affiliation): Ron Garst (Pudding River Watershed Council)

Comment: The Pudding River Watershed Council has recently reorganized and reestablished itself in the watershed, completing new bylaws and recruiting new board members in 2014/2015, with a goal of rebuilding relationships and partnerships with diverse stakeholder groups, and finding opportunities to work collaboratively towards mutual watershed goals. We successfully completed a rapid bio-assessment of juvenile fish abundance and distribution in the watershed with an OWEB grant, working with ODFW, private landowners, and consultants, and reported results to the public at a large gathering of interested citizens. This accomplishment is a reflection of the capacity and commitment of the council to achieve results, and we expect to continue this effort with a place-based planning role in the Pudding River Watershed. For too long the Pudding River and its many water resource needs (water quality and quantity, aging infrastructure, fish passage, restoration needs, climate change, etc.) have gone under the radar, and not received the attention they deserve nor the possibility of a broad-based, collaborative solution, that is the desired outcome with this place-based planning effort. The Pudding River watershed and its citizens are due for some love! Let's go to work and get it done.

Name (Affiliation): Anna Rankin (Watershed Coordination)

Comment: My comments here are to encourage the review teams to select the Pudding River Watershed as the place that receives funding for the current planning pilot project. Clearly, the Pudding River Watershed will make an interesting case study. I am writing from the perspective of a volunteer and someone who registered the business name "Watershed Coordination" with the Secretary of State in Oregon in 2014. These comments regarding the Pudding's collaborative effort focus on the strength of the relationships between stakeholders, the technical ability of the Pudding River collective to administer the grant activities and funding, and the optimal outcomes of OWRD's investment. At the 2015 Gathering of Councils and Districts, the theme that most caught my attention was positive relationships. The importance of maintaining and developing partnership relationships occurred in both various technical and administrative presentations. One of the first insights I had about the Pudding River was about how fractured relationships between the PRWC, various funding agencies and

OWRD Place-Based Planning – Public Comments on Letters of Interest

partners, and the community at large delayed habitat restoration and enhancement dollars from being spent on the Pudding River Watershed. Beginning in July 2014, I set out to rebuild that network and feel satisfied that great progress has been accomplished toward future collaboration. I see that the people within the Pudding collective have established an amicable willingness to work together in order to overcome existing environmental conflicts. One advantage the Pudding has for providing technical capacity is a man named Paul Jeske. He is a graduate student at OSU under the advisor, Todd Jarvis, Interim Director for the Institute for Water and Watersheds. He has offered to volunteer. Along with Paul, comes advice from the academic sector. From that sector also comes Richard Meganck, a Silverton resident who has multiple decades of water conflict resolution experience from working with many different countries. He has offered to share his insight and experience with the Pudding River collective. Among the group of individuals who have expressed their desire to participate in the planning pilot, there are competent, experienced professionals who are committed to do the hands-on work necessary to create a collaborative compact. The people involved in the PRWC's board is comprised of professionally diverse volunteers. • Jeff Butsch, Board Chair, owns 4B Farms. • Steve Starner, Vice Chair, is the water quality supervisor at the City of Silverton's wastewater treatment facility. • Grace Chen, Secretary, has a bachelors in natural resource management. • Ron Garst worked for the USFWS as a fish biologist for over 30 years. He is a native Oregonian and was involved in the removal of the Savage Rapids Dam. • Bob Qualey is a private landowner of property in the Drift creek watershed. He is retired after owning and operating Silverton Sand & Gravel. • Bev Koutny has been involved with the PRWC for over 5 years. • Sheila Marcoe, a Silverton resident, is employed by the Oregon Department of Agriculture as a natural resource policy specialist. • Karen Garst retired after working as the executive director of the Oregon State Bar Association. Ultimately the outcome from OWRD's investment in the Pudding will be the development of a voluntary, collaborative compact achieved through consensus agreement. The plan will lay the groundwork for future water resources management. Planning together today for anticipated water shortages will enable future resolution to be accomplished more quickly and peacefully when conflict inevitably arrives. Another benefit that can be accomplished through this effort is that it also enables the collective to identify focus areas that they share in common and can further result in future collaborations among them.

Name (Affiliation): Bill Graupp (City of Aurora, Mayor)

Comment: The City of Aurora has a project plan that was submitted a week after the deadline, but is ready to go. It does have full benefits for the citizens and the Pudding River. This program is the key to success for our town's growth and involvement in helping our environment.

Name (Affiliation): Scott Eden (Clackamas Soil and Water Conservation District)

Comment: I have been involved with water, conservation and habitat issues in the Pudding watershed since 2002 when I was the Pudding Watershed Council Coordinator. I since worked at Marion SWCD where we did a lot of work with water quality testing, water conservation, stream gaging, etc. There are many unresolved issues / opportunities in the watershed that could lead to improved water availability, quality or fish habitat and wildlife habitat. They just need identification, prioritization and implementation by a focused effort. This place based planning effort is fundamentally a good fit for this watershed which has competing interests for scant water resources, high population growth, fragmented private land ownership and high

OWRD Place-Based Planning – Public Comments on Letters of Interest

value farm production. By forming partnerships and sharing resources, and identifying where resources could be best spent to implement technological fixes, much could be accomplished in this watershed for the good of the threatened salmon runs and the availability of water for beneficial uses. There may be promise in ASR technology and implementation of infiltration galleries to reduce some of the known fish barriers at diversion dams while still providing access to surface water. There may be untapped opportunities to sell stored water from existing reservoirs with farms through agreements and purchases. There may be the potential to implement the Drift Creek water storage project without high environmental costs. There are certainly water savings and conservation technologies to be continued to be implemented. I am intrigued to see the number and diversity of partners in this application and feel strongly that there are many good opportunities that would be identified and have enough common ground that projects would come out of the effort.

Name (Affiliation): Kirk Shimeall (Cascade Pacific Resource Conservation & Development)

Comment: Hello, I am the Executive Director of Cascade Pacific RC&D, hereinafter CPRCD. CPRCD has recently agreed to become the fiscal sponsor of the Pudding River Watershed Council, in hopes of helping them to fulfill their mission. CPRCD is fully supportive of the goals and objectives of the Pudding River Watershed Planning Group, and appreciate your consideration toward funding their place-based planning efforts.

Name (Affiliation): Lisa Kilders (Clackamas Soil and Water Conservation District)

Comment: Clackamas SWCD fully supports the collaborative efforts to conduct planning for future water use in the Pudding River Watershed. The group of individuals and organizations that have stepped forward to participate shows that this process is wanted and more importantly needed to make sure the natural resources of the watershed are protected. Thank you for this opportunity to comment.

Name (Affiliation): Clair Klock (Citizen)

Comment: I haven't studied each watershed in depth, but do know that the Pudding River watershed has been struggling to get a coordinated comprehensive strategy involving a wide stakeholder group. This is the opportunity to see this type of planning happen. The Pudding is noted for problems with both fertilizer and pesticide in groundwater and surface water. The watershed includes in a large population and agricultural area. May I suggest that the commission pick areas that have not had any or very little wide stakeholder planning or implementation in the past.

Name (Affiliation): Beverlee Koutny (Pudding River Watershed Council)

Comment: I feel our coordinator, Anna Rankin, has expressed our views in an accurate and thorough way. Spending time to let all players vent their feelings and coming out with a solid plan is the ideal way to go about solving problems. I think we have a great start. And I'm impressed with those who have taken the time to responded to the opportunity for input. Let's keep moving forward.

Name (Affiliation): Misty Freeman (Oregon State University)

Comment: My name is Misty Freeman, and I am a doctoral candidate in the School of Public Policy at Oregon State University. I am currently studying how water issues affect different rural communities differently in Oregon. I chose three rural case studies around the state from

OWRD Place-Based Planning – Public Comments on Letters of Interest

the list of communities that applied for funding through the Place-Based Planning Initiative. One of my case study communities is the Pudding River Watershed. I cannot comment regarding the merits of the Pudding River Watershed group's application for funding relative to other applications, because I have not done an in depth comparison. Additionally, while I have no stake in the funding decision, I want to be explicit about the fact that I am not advocating one application over another. However, I have been asked to provide feedback to the group on their application in this forum, and I would like to respect that request. I chose to study the Pudding River Watershed because it represents one kind of rural, a community with rural characteristics like a small population and agricultural economy, but which is relatively near to metropolitan centers. I also chose the community because I want my research to be helpful to decision makers, and through interviews conducted during fall 2015 with 35 professionals involved in water policy at the state level, I heard from many interviewees that more information about this area is needed. A positive aspect of the Place-Based Planning application process is that it provides an opportunity for a new beginning for stakeholders to come around the table with one another. The Pudding River Watershed has been struggling for many years to address issues of water quantity and water quality. Specifically, the Drift Creek water storage proposal and the quality of the Pudding River for humans, fish, and other wildlife remain unresolved. My hope is that the process of developing the application for Place-Based Planning funds will provide the momentum that stakeholders from different perspectives need to work on developing trust with one another and to renew a conversation about possible solutions to water issues affecting the community. The partners listed on the application are capable and responsive, and it appears that partners from different backgrounds and ideological positions are ready to come to the table. A facilitator that does not represent an interest within the watershed could be the key to making this new beginning work. Whether the Pudding River Watershed partners receive Place-Based Planning funds or not, I hope that they will persist in the conversation that has started. I urge them to pursue relationships with the potential partners listed in the application and to continue to seek a facilitator that will be perceived as relatively unbiased. This application process is an opportunity to move forward together, and I hope that they do.

SW-15-13 14 19-Rogue

Name (Affiliation): Jonas Parker (Bureau of Land Management)

Comment: The Rogue Basin Partnership (RBP) has been coming online for several years and the BLM has been waiting and participating from the sideline. We are very anxious to see the RBP in action as it fills a necessary and valuable niche. The Rogue Basin is long overdue for a project that takes into consideration the entire Basin and all the water usage within. The Basin is over-allocated and experiences all of the ecological detriments associated with reduced and/or eliminated stream flow. It's sad considering how many communities and concerned citizens there are, but how little is being done to examine the water right situation and develop an action plan. To my knowledge what the RBP is proposing is the pioneering effort in the Rogue Basin. Drawing on past experiences from their staff and partners, I have no doubt that they will be successful in collaborating, characterizing issues, quantifying present and future needs, developing a strategy, and implementing conservation projects. I hope to be a part of this effort where projects can be implemented on BLM-managed land and I strongly urge funding so that this plan can become a reality.

OWRD Place-Based Planning – Public Comments on Letters of Interest

Name (Affiliation): John Gardiner (City of Cave Junction)

Comment: Water is vital to our City and surrounding neighborhoods in the Illinois Valley (major tributary of the Rogue). We face threats from not only climate change, but also rapidly changing land uses such as vineyards and cannabis gardens, which impact groundwater and river flows in both quantity and quality. We look forward to assistance from place-based planning initiatives to mitigate these distributed adverse impacts with similarly distributed best management practices. As a Board Member of our IV Soil and Water District and Watershed Council, I look forward to liaison with Rogue Basin Partnership, in efforts that will allow our City of Cave Junction and the Illinois Valley in general to have a secure economic future in terms of water quantity and quality.

Name (Affiliation): Jim McCarthy (WaterWatch)

Comment: WaterWatch of Oregon is a participating member of the Rogue Basin Partnership (RBP) and supports the RBP's LOI and the needed efforts outlined within.

Name (Affiliation): Denis Reich (Freshwater Trust)

Comment: The Freshwater Trust (The Trust) supports the water resources planning letter of intent submitted by the Rogue Basin Partnership (RBP) on behalf of the Rogue basin. As a partner and member organization of the RBP, The Trust sees this work as an important piece of the larger conservation planning efforts that have taken place in the preceding months and years. Together with the recently completed Rogue Restoration Action Plan the proposed planning effort will round out an overarching conservation strategy for the Rogue. By seeking win-wins between traditional water users and environmental needs, future efficiency improvements and restoration work can be implemented in a synergistic fashion, rather than remaining at odds. This is the philosophy behind the Water for Irrigation, Streams, and Economy (WISE) project that the RBP have included as a key stakeholder in their outreach and planning process. WISE is a multi-partner, water resource, sustainability project with state and federal components and a major part of the Rogue's future. The RBP's proposed place-based planning effort ensures that the new, collaborative restoration strategy for the greater Rogue aligns with WISE conservation benefits. As an organization engaged in water resource planning and flow transaction work in other parts of the state (and formerly in the Rogue as the Oregon Water Trust) The Trust is excited by what the place-based planning opportunity means for Oregon and especially the Rogue. The Trust urges the review committee and Oregon Water Resources to fund the RBP's request. Providing the basin with this planning capacity will help support the WISE project, irrigators, local Watermasters, and the conservation community in their collective pursuit of smarter water use. With such critical planning in place the Rogue and its stakeholders can continue to enjoy sustainable growth and effectively utilized water resources supported by healthy local rivers. An outcome I think we all want and can be proud of. Faithfully, Denis Reich Southern Oregon Programs Director 503-213-0692 denis@thefreshwatertrust.org. Thanks for your time and consideration.

Name (Affiliation): Kate Jackson (Oregon Department of Environmental Quality)

Comment: DEQ and the Governor's Regional Solutions Center for Southern Oregon and the South Coast support the efforts of Rogue Basin Partnership to provide a forum for broad-based collaboration around water planning in the Rogue Basin. There is a long history of cooperation among organizations and interest areas here. A more formal set of agreements need to be

OWRD Place-Based Planning – Public Comments on Letters of Interest

forged to provide reliable, consistent guidance among all the topic areas and existing organizations. The merger of four watershed councils into one council is just the most recent example of the effort to structure the effort more efficiently. This proposed planning effort will bring a wider variety of stakeholders to the table, and assess the appropriate next steps in that organizational effort.

SC-14-17-Klamath

Name (Affiliation): Therese Bradford (Bureau of Reclamation)

Comment: There is a great need for creative problem solving in the Klamath Basin. I suggest the proposal as submitted may be understating the complexity of the issues and the time and energy needed to resolve issues. I believe much more time and funding will be needed to convene the stakeholders, create solutions and implement them. I suggest increasing the funding request. We look forward to working with the State and any other stakeholders to accomplish water planning and creative solutions in the Klamath Basin.

Name (Affiliation): Anonymous

Comment: We have a concern that "Water Rights Analysis" provided in the proposed budget should include the skills of a CWRE or an attorney that specializes in water rights. What are the qualifications of the proposed staff to complete the work? Additionally, we believe that the technical support required to implement item 5 in Section 3.f should include the skills of a registered professional engineer who specializes in water resources. Again, are the qualifications of the proposed staff adequate to implement the proposal? Thank you for the opportunity to comment.

Name (Affiliation): Jim McCarthy (WaterWatch)

Comment: WaterWatch of Oregon was wholly unaware of this proposed planning effort until viewing it on the OWRD website, but our organization is inexplicably listed as a "key project partner" on this LOI. We would also point out that Oregon Trout no longer exists, and that the Klamath Water and Power Agency (KWAPA) is currently under federal investigation for alleged misuse of \$48 million in taxpayer funds intended to help struggling fish.

Name (Affiliation): Mary Anne Nash (Farm Bureau), Katie Fast (Oregonians for Food and Shelter), Heath Curtiss (Oregon Forest and Industries Council)

Comment: See Attachment 1.

NW-01-01-NorthCoast

Name (Affiliation): Meg Thompson (Citizen)

Comment: Our North Coast Basin drinking watersheds are at risk. Water quality and quantity, and the ecosystem health of our forests have been damaged. Owned by private industry, these forests are not managed for the public good, but for financial gain. Our rural communities deserve the same protections for their drinking watersheds as Portland has for its Bull Run watershed. The millions of dollars we have invested in infrastructure are insufficient to address the risks: 1) Climate change and intense storm events increase the risk of landslide. Summer droughts jeopardize the natural storage capacity of our forests, particularly those which have

OWRD Place-Based Planning – Public Comments on Letters of Interest

been clear-cut. The climate protective value of the carbon storage capacity of our rain forests/drinking watersheds is being ignored; the financial gain of industrial forest corporations has superseded the public interest. 2) Forest practices, such as clear-cutting, quarry operations, slash-burns and aerial spraying have exposed our vulnerable citizens to significant public health risks. 3) Industrial forest owners have not responded to citizen requests to develop protective strategies for our coastal drinking watersheds, stating their corporate rights to operate within the Forest Practices Act. The Oregon Water Resources Department needs to understand the context for our citizen concerns. Rockaway Beach and Arch Cape drinking watersheds were clear-cut by their industrial owners. Increased turbidity resulted in residents receiving notices of cancer-causing chlorine-byproducts in their water, telling them if they had concerns to “call their doctors.” Slash-burn fires created smoke-drift into homes and schools, and at least two went out-of-control, resulting in forest fires. Pesticides continue to be regularly sprayed, and citizens fear drift and revolatization. There is no money or valid protocol for monitoring of pesticide levels in our watersheds. Citizens are concerned clear-cut damage to the forest ecosystem has decreased the forest floor’s storage capacity and contributed to water restrictions. Yachats was in the process of buying their watershed, having been warned by DEQ about the significant risks to the quality and quantity of their drinking water if the forest was clear-cut. (See the DEQ letter to the mayor at <http://www.yachatsdocuments.info/library/Download.aspx?docid=3446>). However, the industrial forest owner clear-cut before the town could purchase. The mayor was forced to impose water restrictions due to the damage to the forest ecosystem and the drought’s impact on the impaired storage capacity of the watershed. (See <http://klcc.org/post/yachats-mayor-talks-about-water-shortage>). Citizens in the North Coast Basin want to protect the natural storage capacity of their drinking watershed and not incur additional costs of finding other sources of drinking water should their source dry-up, particularly with changing climate. Oceanside’s Short Creek water intake had to be shutdown on two occasions when quarry discharge turned the creek white. Our sheriff responded, but agency response was slow, no testing occurred and no legal action resulted. Landslide closed the Three Capes Scenic Route, damaged our water delivery system to Cape Meares and resulted in expensive rerouting of delivery pipes, changing the intake to Coleman Creek, and construction of a new processing plant and storage tank. Now Oceanside/Cape Meares Water District is facing the prospect of a new road being routed through Coleman Creek, despite DEQ data indicating high landslide potential. We also face planned clear-cutting of our drinking watersheds, increasing the risk of landslides, turbidity resulting in cancer-causing chemical drinking alerts and pesticide spraying. Our watersheds are in close proximity to Cape Meares State Park and the Cape Meares and Three Arches National Wildlife Refuges. These sensitive areas need protection. Citizens from numerous coastal communities have expressed concerns to their civic leaders and water district officials. Agencies have been unable to help due to limited field personnel, lack of regulatory and/or enforcement authority and the ‘silo-effect.’ Citizens worry agencies have been unable to prevent harmful forest practices. NOAA and EPA fined our state \$2,000,000 under CZARA for failing to adequately protect our coastal streams. (See the federal ruling at <https://coast.noaa.gov/czm/pollutioncontrol/media/OR%20CZARA%20Decision%20Doc%2012-20-13.pdf>). Federal forests have been effectively managed without aerial herbicide applications since the 1980s lawsuit stemming from the Alsea/Five Rivers tragedy of herbicide poisoning causing significant harm to the community. Economists estimate switching to selective harvesting and restorative practices can be more profitable than clear-cuts. (See

OWRD Place-Based Planning – Public Comments on Letters of Interest

economist Ernie Niemi, PH.D. at <http://www.nreconomics.com> and biologist Chris Frissell, Ph.D. at http://coastrange.org/documents/Frissell2013_ACSReport.pdf). The Siuslaw National Forest has become a model of how forestry restoration can benefit the forest ecosystem and the public good. Our drinking watersheds are being clear-cut, eroding the carbon capacity of our forests which is essential to protecting all our citizens from climate change. John Talberth, Senior Economist with the Center for Sustainable Economy, Dominick DellaSala, Chief Scientist with the GEOS Institute, and Erik Fernandez, Wilderness Program Manager with Oregon Wild, have recently released the Global Forest Watch Report. See the November 2015 report: Clear-Cutting our Carbon Accounts: How State and private forest practices are subverting Oregon's climate agenda. As a retired child psychologist, I am concerned about the public health risk of placing cancer-causing chemicals in our drinking watersheds. The fetus and young child are particularly sensitive to developmental, hormonal and neurological harm. Public health should be placed at a higher value than the dollars 'saved' by clear-cuts and herbicide applications. Forests can be managed protectively. Our coastal forested drinking watersheds are a small percentage of the land their industrial forest owners hold. These lands should be managed for the public good as a source of clean, abundant water in perpetuity. The North Coast Land Conservancy's application for the WRD Place-Based Planning can allow citizens' voices to be heard. Agency stakeholders, water commissioners, civic officials and private industrial land owners can come together to develop solutions. The protective carbon capacity of our forests needs to be preserved. Citizens have the right to clean drinking water. Public health should be our top priority. The North Coast Basin drinking watersheds deserve the highest protections. The future of Oregon depends on our collaborative action.

Name (Affiliation): Kathryn Taylor (Citizen)

Comment: Thank you for considering the grant for the North Coast watersheds. The water quality of our coastal communities has been a public health issue and needs to be addressed. With an overwhelmingly large percentage of tourism driving the coastal economy, safe drinking water and healthy wildlife and aquatics are very important to maintaining the allure of Oregon's coast. Plus our large percentage of elderly folks need safe and clean water to drink. Thanks for considering the North Coast.

Name (Affiliation): Mary Anne Nash (Farm Bureau), Katie Fast (Oregonians for Food and Shelter), Heath Curtiss (Oregon Forest and Industries Council)

Comment: See Attachment 1.

NW-18-01-MidCoast

Name (Affiliation): Adam Denlinger (Seal Rock Water District)

Comment: The District's current and future water supply needs provide critical context for supporting the Mid-Coast Place-Based Integrated Water Resources Planning Study. To satisfy the District's mandate to provide safe and reliable drinking water to its customers, the District is exploring the option of developing a primary water supply to treat, and transmit drinking water from a primary source, closer to the District's boundary. A single 12-inch pipeline conveys treated water seven miles from the City of Toledo to the District's service area. In the event of a major earthquake, it is highly probable that the District's existing pipeline from Toledo would fail, which would leave the District without a water supply. In addition, the

OWRD Place-Based Planning – Public Comments on Letters of Interest

District is experiencing more frequent periods when source water is unavailable due to man-made and natural occurrences. For these reasons, the District is exploring alternative sources of water supply for use as a primary water source. The District completed a reconnaissance-level source water study (Water Supply Study) in 2015. A team of consultants was formed to conduct this reconnaissance level study which will likely serve to support further water resource planning efforts in the mid-coast basin.

Name (Affiliation): Mary Anne Nash (Farm Bureau), Katie Fast (Oregonians for Food and Shelter), Heath Curtiss (Oregon Forest and Industries Council)

Comment: See Attachment 1.

SW-17-19-LowerRogue

Name (Affiliation): Mary Anne Nash (Farm Bureau), Katie Fast (Oregonians for Food and Shelter), Heath Curtiss (Oregon Forest and Industries Council)

Comment: See Attachment 1.

E-08-06-UpperGrandeRonde

Name (Affiliation): Mary Anne Nash (Farm Bureau), Katie Fast (Oregonians for Food and Shelter), Heath Curtiss (Oregon Forest and Industries Council)

Comment: See Attachment 1.

E-12-10-MalheurLake

Name (Affiliation): Mary Anne Nash (Farm Bureau), Katie Fast (Oregonians for Food and Shelter), Heath Curtiss (Oregon Forest and Industries Council)

Comment: See Attachment 1.



Evaluation Summary

Place-Based Integrated Water Resources Planning Grant

Purpose, Background and Overview

The purpose of this document is to provide further context and clarification for how the Oregon Water Resources Department (OWRD) developed its funding recommendations for the Place-Based Planning Grants that will support communities as they pilot the [2015 Draft Place Based Guidelines](#). This document also provides feedback on the Letters of Interest that were submitted for consideration.

In December 2015, OWRD received sixteen Letters of Interest (“proposals”) requesting grants to pilot place-based planning. Grant requests totaled more than \$3.6 million dollars. As to be expected with a new program, the proposals presented a wide range of ideas and approaches from different parts of the state. Letters of Interest were evaluated against a set of review factors by both OWRD staff and a state inter-agency team. The review factors included:

1. **Evaluation criteria** – Strengths and weaknesses of each proposal were evaluated in the areas of leadership, partnerships, capacity, integration, planning needs/outcomes, approach, need for assistance, readiness, and likelihood of developing a plan in 2-3 years.
2. **Variation among pilots** – Factors that allow for testing place-based planning in places with different characteristics were considered such as geography, scale, type of convener, local capacity, proposed approach and backgrounds in water planning and collaborative planning.
3. **Public comments** – OWRD received public comments on the Letters of Interest, which were considered during the reviews. For a copy of the public comments, [click here](#).

The inter-agency review team used the review factors to sort Letters of Interest into groups based on strengths and narrowed the potential pool for OWRD to consider internally. OWRD staff then used program level considerations to develop its final recommendations. The approach used by OWRD and the inter-agency review team to review the Letters of Interest and develop funding recommendations are contained in the following pages.

The contents of this document are summarized in the table below:

| Section | Description | Pages |
|---|---|-------|
| Place-Based Planning Pilot Objectives | Objectives for the pilot phase of this program influenced the overall funding recommendations. | 2 |
| Criteria, Considerations and Factors for Developing Recommendations | In addition to pilot considerations, OWRD and an inter-agency review team considered evaluation criteria and other factors. | 3 |
| Summary of Groupings | Based on inter-agency review team input, OWRD placed proposals into a group that corresponds with the overall strength of their proposal. | 4 |
| Feedback on Letters of Interest | An overview of the evaluation summary sheets were developed to provide feedback on each proposal.. | 4 |
| Summary Sheets for Places Recommended for Funding | Evaluation summaries, organized by group, provide an overview of the strengths and weaknesses of each proposal. | 5-12 |
| Summary Sheets for Places Not Recommended for Funding | Evaluation summaries, organized by group, provide an overview of the strengths and weaknesses of each proposal. | 13-34 |

Place-Based Planning Pilot Objectives

Place-based, integrated, water resources planning is a recommended action in the 2012 Integrated Water Resources Strategy (IWRS) and is a part of the Water Resources Development Program. Place-based planning is currently in a pilot phase, meaning that OWRD is gathering feedback, learning and adapting as it implements this initiative. Place-based planning and the pilot phase of this program are tied to numerous OWRD objectives. Below is a list of those objectives and their origins.

Integrated Water Resources Strategy (<http://bit.ly/owrdiwr>):

- Help communities better understand and meet instream and out-of-stream needs, taking into account water quantity, water quality, and ecosystem needs.
- Action 9A: Undertake Place-Based Integrated Water Resources Planning.
 - Develop a template for place-based integrated water resources strategies.
 - Provide assistance to communities undertaking place-based planning.
 - Compile relevant water-related information to support place-based planning.

Water Resources Development Program (<http://bit.ly/owrdwrp>):

- Help individuals and communities meet their instream and out-of-stream water supply needs now and into the future, accounting for water quantity, water quality and ecosystem needs.

Place-Based Integrated Water Resources Planning (<http://bit.ly/owrdplanning>):

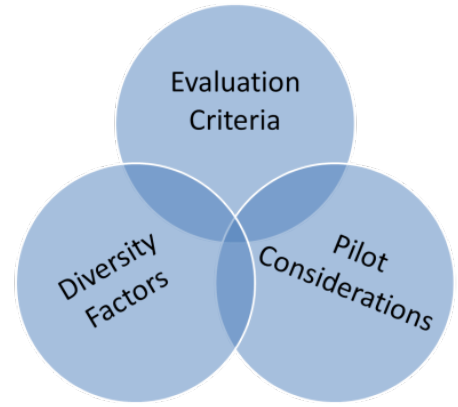
- Help communities build a collaborative and integrated water planning process.
- Help communities understand their water resources.
- Help communities understand their near-term and long-term instream and out-of-stream needs.
- Help communities identify and agree upon integrated solutions to meet their instream and out-of-stream needs.
- Help communities develop integrated water resources plans that provide a road map for implementing integrated solutions at the local level and inform the IWRS.

Place-Based Planning Pilot Phase:

- Partner with local leaders and community groups to pilot integrated water resources planning at the local level using the [2015 Draft Place Based Guidelines](#) as a framework.
- Solicit input and feedback on how best to undertake integrated water resources planning at the local level and how this type of local planning can best inform the IWRS.
- Develop at least two Place-Based Integrated Water Resources Plans with actionable solutions in by 2019, including projects that may be a good fit for other OWRD funding programs.
- Develop outcomes by 2019 that can be communicated to the Oregon Legislature.
- Demonstrate if and how the place-based planning framework can serve as a catalyst for collaborative and integrated approaches to water planning across the state.
- Test place-based planning in areas with diverse characteristics.
- Provide unique opportunities to test integration with other programs, groups and efforts and develop transferrable lessons learned.
- Build capacity and support for collaborative, integrated and inventive approaches to planning.
- Leverage other funding and resources to maximize investments during the pilot phase.
- Provide additional guidance and structure for future place-based planning efforts.

Criteria, Considerations, and Factors for Developing Recommendations

OWRD is interested in funding pilot areas that represent diverse characteristics and provide unique and timely opportunities to test the [2015 Draft Place Based Guidelines](#). In addition to traditional evaluation criteria, OWRD took pilot considerations and diversity factors into account to develop a strategic portfolio of pilot areas. Evaluation criteria, diversity factor and other considerations are summarized below.



| | |
|---------------------------------|--|
| Evaluation Criteria | All proposed efforts were evaluated using the following criteria to identify strengths and weaknesses. |
| Leadership | The proposed effort will be led by an appropriate and capable convener. |
| Partnerships | The proposed effort is likely to include a broad representation of interests and a strong network of partners. |
| Capacity | The convener and partners are likely to contribute the time, energy and resources necessary to conduct collaborative planning. |
| Integration | The proposed effort is likely to follow an integrated approach consistent with the IWRS. |
| Needs/Outcomes | The need for integrated water planning is clear, positive outcomes are likely, and Place-Based Planning is the appropriate tool. |
| Approach | The proposed approach is consistent with the Guidelines and is reasonable in terms of scope, strategy, schedule, and cost. |
| Diversity Factors | The Department seeks to fund pilot areas with diverse characteristics to maximize learning and transferability. |
| Geography/Scale | The Guidelines should be tested in different regions at different scales. |
| Convener Type | Pilot areas should represent a diversity of capable conveners who will lead the local effort. |
| Capacity | Pilot areas should present different levels of local capacity, including places with higher needs and limited capacity. |
| Proposed Approach | Pilot areas should present different ways to approach the process and implement the Guidelines. |
| History | Pilot areas should represent different backgrounds/experience with water planning and collaborative planning as well as varying access to existing data and plans. |
| Other Considerations | The following factors were also taken into consideration during the review process. |
| Pilot Objectives | The proposed effort will help the Department achieve its pilot objectives. |
| Fit for the Pilot Phase | The proposed effort demonstrates characteristics or qualities that make it a good fit during the pilot phase. |
| Need for Assistance | Department assistance, both financial and technical, is likely to have a significant impact on water planning efforts. |
| Readiness | The proposal demonstrates that there is local momentum towards integrated and collaborative approaches and partners seem committed to undertaking place-based planning. |
| Likelihood of Completion | The proposed effort is likely to result in a Place-Based Integrated Water Resources Plan with actionable solutions acceptable to a broad representation of interests <i>in 2-3 years</i> . |

Summary of Groupings

OWRD staff, with input from the inter-agency review team, used the review factors above to sort Letters of Interest (“proposals”) into the following four groups based on their relative strength. The inter-agency review team recommended funding proposals from Group A and Group B. Characteristics of each group are as follows:

- **Group A** – Proposals demonstrated strengths against all of the criteria, have a moderate need for assistance, demonstrated readiness, and have a high likelihood of completing a plan in 2-3 years. This group includes: [Lower John Day](#), [Tualatin](#), [Upper Grande Ronde](#), and the [Upper Willamette](#).
- **Group B** – Proposals performed well against the evaluation criteria, have emerging partnerships, a high need for assistance, demonstrated readiness, and present interesting opportunities to test the Guidelines in areas that have a high need and desire to pursue more integrated and collaborative approaches. This group includes: [Malheur Lake](#), [Mid-Coast](#), [Pudding](#), [Rogue](#), and [Walla Walla](#).
- **Group C** – Proposals have capable leadership and emerging partnerships, but they did not perform as well against the evaluation criteria, and aspects of the approach need to be strengthened. This group includes: [North Coast](#), [Polk County](#), and [South Santiam](#).
- **Group D** – Proposals did not provide adequate information to evaluate some criteria, are at the beginning phases of initiating a collaborative effort, and aspects of the approach need to be strengthened. This group includes: [Eola Amity/Walnut Hills](#), [Lower Rogue](#), and [North Powder](#).

Feedback on the Letters of Interest

The following section beginning on page 5 presents summary sheets for each of the Letters of Interest, including an overview of their strengths and weaknesses.. The summary sheets are organized by group. The first four summary sheets represent those from Group A and Group B that are recommended for funding. The remaining summary sheets represent those that are not recommended for funding at this time.

Letter of Interest: NC_06_21_LowerJohnDay

Overview of Evaluation and Funding Recommendation

Recommended for Funding: Yes – Fully fund \$190,000* to undertake all 5 planning steps described in the 2015 Draft Place Based Planning Guidelines.

*If funded by the Commission this pilot area would work with OWRD to ensure their approach follows the Guidelines and will lead to the development of a Place-Based Integrated Water Resources Plan.

Grouping: Group A Proposal demonstrates strengths against all of the criteria, has a moderate need for assistance, demonstrated readiness, and has a high likelihood of completing a plan in 2-3 years.

Summary (see following page for more information):

- Very strong proposal with a capable local convener and a strong network of local partners who are likely to contribute to a multi-year collaborative effort.
- The proposal demonstrates an understanding of the IWRS and Place-Based Planning and is likely to result in a Plan that is consistent with OWRD expectations in 2-3 years.
- This proposal builds on an existing partnership with a governance agreement in place and presents a timely opportunity to test integration with the Oregon Watershed Enhancement Board (OWEB) Strategic Action Planning process.
- The approach is very well reasoned and the proposal clearly describes why this place is a good fit for the pilot phase, including a local commitment to collaborative and innovative approaches.

Summary Information from the Letter of Interest

Convener: John Day Basin Partnership

Hydrologic unit/scale: Lower John Day Sub-basin (44% of the John Day River Basin) covering 3,712 square miles.

Water issues/drivers: Builds off of existing partnership to address: current and anticipated impacts of recurring drought which affects stream flows (lower than usual) and agricultural viability; climate change; limited storage capacity and need for creative capture, storage and recharge projects; limited data/knowledge about groundwater resources (recent declines in water tables).

| | | | |
|---------------------------|-----------|--------------------|--|
| Funding requested: | \$190,000 | Cost-share: | \$36,000 (secured in-kind) \$195,000 (pending cash & in-kind) |
|---------------------------|-----------|--------------------|--|

Other support requested: OWRD participation, technical assistance, information assistance.

Executive Summary: The John Day Basin Partnership will pilot a place-based water planning effort to identify and implement integrated solutions to the water quantity and quality challenges facing the Lower John Day. This area supports a robust agriculture-based economy and important wild anadromous fish habitat that depends upon reliable water resources. The lower river and its tributaries rely heavily on their watersheds’ ability to capture, store, and slowly release precipitation received each year. Water is historically scarce with annual precipitation of 8 to 20 inches. Several years of drought and the emerging impact of climate change further threaten supplies. Additionally, there is almost no large scale water storage, very little major conveyance infrastructure, and no plan for efficiently developing, conserving, storing, and utilizing water in the region. For the region to support further economic development and healthy fisheries in the future, a comprehensive place-based plan for developing and using water is essential. The Lower John Day is well-suited to pursue a pilot because of the area’s reliance on water, limited infrastructure, and Steps #1 and #2 of OWRD’s planning guidelines are largely complete with a partnership in place and water and ecological issues characterized in the basin-wide Strategic Action Plan developed for OWEB. With financial and technical assistance from OWRD, we can complete Steps #3-#5 of the guidelines, identify priority projects, and more efficiently manage our water resources to best meet long-term water needs of the Lower John Day community.

Inter-Agency Review Team Feedback

Proposals were evaluated against a set of review factors by both OWRD and a state inter-agency team. Evaluation criteria were used to identify strengths and weaknesses of the proposed efforts in the areas of **leadership, partnerships, capacity, integration, planning needs/outcomes, and approach**. This proposal demonstrated strengths against all of the evaluation criteria. The review team also assessed **need for assistance, readiness, and likelihood of developing a plan in 2-3 years**, which is summarized below.

Strengths

- **Leadership.** The proposed convener has diverse representation, serves multiple interests and can be perceived as impartial and inclusive. The proposed convener has a demonstrated interest in and commitment to water resources planning and management.
- **Partnerships.** The partners have been assembled and have a governance agreement in place to structure involvement. The proposed convener has past experience with building and maintaining strong partnerships.
- **Capacity.** The proposed convener and partners have demonstrated capacity to work collaboratively and undertake multi-year planning efforts. Partners have already been assembled and have engaged a capable facilitator. The proposal has considerable cash match and anticipated in-kind contributions.
- **Integration.** The proposal indicates an awareness of existing information and complementary efforts. This proposal provides a timely opportunity to test how Place-Based Planning can integrate with the Oregon Watershed Enhancement Board (OWEB) Strategic Action Planning process.
- **Needs/Outcomes.** This effort has a high likelihood of developing a quality plan in 2-3 years that identifies viable and actionable solutions acceptable to diverse interests. The proposal clearly describes the immediate need for integrated water planning as well as the long-term objectives for the basin. The proposal conveys how this process can serve as a model for adjoining sub-basins.
- **Approach.** The approach is very well-reasoned, demonstrates a very clear understanding of the IWRS principles, and describes how this process will effectively build on the 2015 Draft Place-Based Planning .

Weaknesses (to be addressed in Partnership with OWRD during planning step 1)

- **Leadership.** It is unclear which individual(s) from the convening body will be the local champion of the process.
- **Partnerships.** As proposed, the list of partners may not be inclusive of all relevant interests (e.g. municipal needs and demands). Letters of support could strengthen this proposal.
- **Integration.** The proposed effort is focused on water supply and quantity. While this is an appropriate driver for integrated water planning, it is important that the effort continue to pursue planning in an integrated approach (considering water quality and ecosystem health).
- **Capacity.** It is unclear how the members of the John Day Partnership will contribute to the planning process in the Lower John Day sub-basin. The relationship between the Partnership and the Lower John Day Working Group needs to be clarified.
- **Approach.** While the proposed convener and partners have made significant headway on Planning Step #1, OWRD may recommend modifications to the existing governance agreement to ensure that there is a balanced representation of interests and may require a work plan before the planning group proceeds with Planning Step #2.

| | |
|---|----------|
| Need for Assistance: | Moderate |
| Readiness: | High |
| Likelihood of Completing a Plan: | High |

Letter of Interest: E_08_06_UpperGrandeRonde

Overview of Evaluation and Funding Recommendation

Recommended for Funding: Yes – Fully fund \$197,000* to undertake all 5 planning steps described in the 2015 Draft Place Based Planning Guidelines.

*If funded by the Commission this pilot area would work with OWRD to ensure their approach follows the Guidelines and will lead to the development of a Place-Based Integrated Water Resources Plan.

Grouping: Group A Proposal demonstrates strengths against all of the criteria, has a moderate need for assistance, demonstrated readiness, and has a high likelihood of completing a plan in 2-3 years.

Summary (see following page for more information):

- Very strong proposal with a capable local convener and a strong network of local partners who are likely to contribute to a multi-year collaborative effort.
- The proposal demonstrates an understanding of the IWRS and Place-Based Planning and is likely to result in a Plan that is consistent with Department expectations.
- The approach is well reasoned and demonstrates that the convener and partners have been thinking about how best to implement the 2015 Draft Place-Based Planning Guidelines in a way that address local water issues.

The proposal provides an opportunity to build on past collaborative work in a more integrated approach and clearly describes why this place is a good fit for the pilot phase, including a local commitment to collaborative and innovative approaches.

Summary Information from the Letter of Interest

Convener: Union County

Hydrologic unit/scale: The planning area is the Upper Grande Ronde River Watershed located in northeast Oregon. The watershed boundary closely aligns with the boundary of Union County.

Water issues/drivers: Water supply shortages for in-stream and out-of-stream uses; water quantity effects on quality and habitat; need to better understand and address imbalances in water supply and demand based on seasonal availability; drought; climate change.

| | | | |
|---------------------------|-----------|--------------------|----------------------------|
| Funding requested: | \$197,000 | Cost-share: | \$75,000 (secured in-kind) |
|---------------------------|-----------|--------------------|----------------------------|

Other support requested: Participate in meetings, planning assistance (assist with coordination of information gathering efforts with other state agencies, review documents), technical assistance (gather and analyze water rights information, assist with climate change projections, review documents).

Executive Summary: The Upper Grande Ronde River Watershed is a vital ecosystem that supports ranchers, farmers, and urban residents as well as an array of fish and wildlife species. Union County is convening a place-based integrated water resources planning effort to evaluate all demands on water resources within the watershed compared to available water resources. This will be a collaborative effort among a balanced representation of local organizations that have a vested interest in the area’s water resources. While there is a significant body of research on water quality, quantity, and ecological demands in the watershed, there is a lack of seasonal-level analysis to evaluate whether the demands are aligned with available water quality and quantity. This effort will analyze water quality and quantity versus demand for each week of the year to determine when water quantity and quality exceed demand and when demand exceeds available supply. Analyzed data will be used to develop strategies to balance water demand with supply. This may include improvements in water storage, conveyance, treatment, and reuse. The planning effort will evaluate, on a watershed scale, possible water resources management strategies to meet the demands, and possible improvements to maximize water use efficiencies. The objective is to have a complete document outlining available water resources in the watershed compared to the demands on each resource that will serve as a “roadmap” to best align the demands with the available resources for an integrated and sustainable system.

Inter-Agency Review Team Feedback

Letters of Interest were evaluated against a set of review factors by both OWRD and a state inter-agency team. Evaluation criteria were used to identify strengths and weaknesses of the proposed efforts in the areas of **leadership, partnerships, capacity, integration, planning needs/outcomes, and approach**. This proposal demonstrated strengths against all of the evaluation criteria. The review team also assessed **need for assistance, readiness, and likelihood of developing a plan in 2-3 years**, which is summarized below.

Strengths

- **Leadership.** The proposed convener serves a broad public interest, is perceived as inclusive and impartial, can engage with a broad representation of water interests, and has a demonstrated interest in water planning. The proposed convener brings political clout to the process and has assembled a team that will provide added capacity.
- **Partnerships.** Local, state and federal partners are identified in addition to the skills/resources they would contribute. The proposed convener has past experience with building and maintaining strong partnerships.
- **Capacity.** The proposed convener has identified a team of individuals who will assist in day-to-day coordination (county staff, Regional Solutions, and a local consulting firm). The proposed convener and partners have led or participated in multi-year collaborative planning efforts.
- **Integration.** The proposed convener demonstrates awareness of existing groups, data and plans and it is likely that this process will build off of and integrate with other relevant efforts.
- **Needs/Outcomes.** This effort has a high likelihood of developing a quality plan that identifies viable and actionable solutions in 2-3 years. The Letter conveys why this place is a good fit for the pilot phase.
- **Approach.** The proposed scale is well-reasoned and appropriate for planning. The proposal identifies clear activities and outputs. As proposed, the schedule and budget are reasonable and appropriate to execute the proposed approach.

Weaknesses (to be addressed in Partnership with OWRD during planning step 1)

- **Partnerships.** The differentiation between “Place-Based Partners” and “Place-Based Stakeholders” is confusing and potentially problematic. The composition and structure of the group should reflect the integrated nature of water resources beyond water quantity and water rights.
- **Capacity.** A pending or secured cash match could strengthen this effort. The estimated cost per hour for partner organizations seems high compared to other proposals.
- **Integration.** The proposed effort is focused on water supply and quantity. While this is an appropriate driver for integrated water planning, it is important that the effort continue to pursue planning in an integrated approach (considering water quality and ecosystem health).
- **Needs/Outcomes.** The proposal does not emphasize the timeliness of this particular opportunity (i.e, are there opportunities lost if it does not move forward now?)
- **Approach.** The proposal demonstrates a vision for place-based planning with clear activities and outputs, which is generally considered a strength. However, the convener needs to remain open and flexible to the needs and interests of the partner organizations as they emerge through the collaborative process.

| | |
|---|----------|
| Need for Assistance: | Moderate |
| Readiness: | High |
| Likelihood of Completing a Plan: | High |

Letter of Interest: E_12_10_MalheurLake

Overview of Evaluation and Funding Recommendation

Recommended for Funding: Yes – Partial funding (\$135,000)* to focus on Planning Steps 1-3.
 *If funded by the Commission this pilot area would work with OWRD to ensure their approach follows the Guidelines and will lead to the development of a Place-Based Integrated Water Resources Plan.

Grouping: Group B Proposal scored well against the evaluation criteria, has emerging partnerships, a high need for assistance, demonstrated readiness, and presents interesting opportunities to test the Guidelines given its high need and desire to pursue more integrated and collaborative approaches.

Summary (see following page for more information):

- Strong proposal with a capable local convener and a network of engaged local partners who are likely to contribute to a multi-year collaborative effort.
- The proposal demonstrates an understanding of the IWRS and Place-Based Planning and is likely to result in a Plan that is consistent with OWRD expectations.
- The need for assistance is clearly articulated and this presents a timely opportunity to collaborate with local partners to fully characterize water resources in a data limited basin and develop a shared vision for sustainably managing water resources.
- This is an opportune time to begin place-based planning as OWRD embarks on a multi-year study to characterize groundwater resources. While the study is distinct from place-based planning, OWRD recommends using this as an opportunity to build stronger partnerships with local stakeholders as they implement Planning Steps 1-3 (collaborative information gathering).

Summary Information from the Letter of Interest

Convener(s): Harney County Watershed Council

Co-Convener: Harney County Court (*potential*)

Hydrologic unit/scale: Malheur Lake Basin, which includes seven 4th level hydrologic units.

Water issues/drivers: Long-standing need and desire to better understand groundwater resources, heightened by proposed groundwater limited area; opportunities to integrate surface water/groundwater issues and look at recharge options; surface water and groundwater quality; build on collaborative work being done on wetland management (Harney Wetlands Initiative).

| | | | |
|---------------------------|-----------|--------------------|--|
| Funding requested: | \$205,500 | Cost-share: | \$24,683 (secured in-kind & cash) \$35-\$65,000 (pending in-kind) |
|---------------------------|-----------|--------------------|--|

Other support requested: The applicant requests an active and full partnership with OWRD through the planning process, including planning assistance.

Executive Summary: In Harney County, hay and cattle are our largest industries and are the lifeblood of the county’s economic health. Recent drought years have contributed to declining groundwater levels in several areas of the basin, enough to cause OWRD to propose a new groundwater limited area. Fear and uncertainty are becoming endemic among land users and owners and employees of associated businesses and suggests that they not only need to better understand the nature and causes of this apparent trend, but participate in discussing actions that may be needed in the short and long-term to ensure water sustainability and economic vitality. Sharing their collective wisdom about water fluctuations in the areas where they live and work in a neutral, collaborative, place-based process, can help provide the innovative solutions to help bring demand more in line with supply, solutions that no one individual or agency could have conceived unilaterally. The process can provide a better understanding of how water resources can be effectively managed, not just in periods of decline, but forward into the future. The process will provide a good opportunity for OWRD to become a partner in solving the challenging issues land users and their business networks face, as opposed to just regulating them. The community’s participation in a collaborative process is the ideal arena to foster trust and cooperation among those affected by water fluctuations and help support OWRD’s efforts. The recent formation of the Rules Advisory Committee to

help update basin rules is evidence of a desire for community involvement to foster better communication between the agency, the community and those with environmental concerns.

Inter-Agency Review Team Feedback

Letters of Interest were evaluated against a set of review factors by both OWRD and a state inter-agency team. Evaluation criteria were used to identify strengths and weaknesses of the proposed efforts in the areas of **leadership, partnerships, capacity, integration, planning needs/outcomes, and approach**. This proposal performed well against all of the evaluation criteria. The review team also assessed **need for assistance, readiness, and likelihood of developing a plan in 2-3 years**, as summarized below.

Strengths

- **Leadership.** The proposed convener has diverse representation on its board, serves multiple interests and can be perceived as impartial and inclusive. The proposed convener has a demonstrated interest in and commitment to water resources planning and management.
- **Partnerships.** Partners have a long and successful history of working collaboratively as demonstrated through past efforts. The proposal indicates clear support from a diverse network of partners. The proposed convener has past experience with building and maintaining strong partnerships.
- **Capacity.** The proposed convener and partners have led and participated in numerous multi-year collaborative efforts to address challenging natural resources issues. Citizen engagement is high. The proposed convener had past success with Oregon Consensus and proposes to utilize their services in this effort.
- **Integration.** The proposal indicates an awareness of existing information and is likely to build on and integrate with complementary efforts. The proposal touches on water quantity, water quality and ecological needs.
- **Needs/Outcomes.** The proposed convener clearly describes the high need and timeliness for place-based planning and indicates an immediate need for collaborative information gathering to develop a shared understanding and vision for water resources management.
- **Approach.** The approach is well-reasoned and consistent with the 2015 Draft Place-Based Planning Guidelines. The proposed convener demonstrates a thorough understanding of collaborative efforts.

Weaknesses (to be addressed in Partnership with OWRD during planning step 1)

- **Leadership.** It is unclear which individual(s) from the proposed convening body will be the local champion of the process.
- **Partnerships.** As proposed, the list of partners may not be inclusive of all relevant interests (e.g. municipalities, instream/conservation interests). Letters of support from conservation interests could strengthen this proposal.
- **Capacity.** The Watershed Council may have limited capacity to do the day-to-day work of coordinating the planning process and has indicated a need to hire a part-time project manager to assist with capacity. In-kind contributions are not secured.
- **Integration.** The proposal could benefit from a more detailed discussion of different water interests and needs, including municipal needs and conservation needs.
- **Approach.** The Malheur Lake Basin is a very large basin and may not be the appropriate scale for planning. Given the limited data available in the Malheur Lake Basin it may not be appropriate to expect a plan in 2-3 years.

| | |
|---|----------|
| Need for Assistance: | High |
| Readiness: | High |
| Likelihood of Completing a Plan: | Moderate |

Letter of Interest: NW_18_01_MidCoast

Overview of Evaluation and Funding Recommendation

Recommended for Funding: Yes – Partially fund \$135,000* to focus on Planning Steps 1-3.

*If funded by the Commission this pilot area would work with OWRD to ensure their approach follows the Guidelines and will lead to the development of a Place-Based Integrated Water Resources Plan.

Grouping: Group B Proposal scored well against the evaluation criteria, has emerging partnerships, a high need for assistance, demonstrated readiness, and presents interesting opportunities to test the Guidelines given its high need and desire to pursue more integrated and collaborative approaches.

Summary (see following page for more information):

- Strong proposal with a capable local convener and a network of engaged local partners who are likely to contribute to a multi-year collaborative effort.
- The proposal demonstrates an understanding of the IWRS and Place-Based Planning and is likely to result in a Plan that is consistent with Department expectations.
- The need for assistance is clearly articulated and this presents a timely opportunity to collaborate with local partners to fully characterize water resources and identify integrated solutions for near-term and long-term water challenges in an area with distributed water challenges.
- This place has demonstrated momentum towards more collaborative and integrated approaches and OWRD recommends funding to maintain this momentum. This proposal also presents OWRD with an opportunity to co-convene in a basin as they develop their collaborative capacity.

Summary Information from the Letter of Interest

Convener: City of Newport

Co-Convener: Oregon Water Resources Department (*requested*)

Hydrologic unit/scale: Lower Siletz, Lower Yaquina, and Devils Lake-Moolack Frontal watersheds.

Water issues/drivers: Need for regional water planning that coordinates water users; unreliable supply (some water providers cannot meet current demands); mismatch between water supply and demand; opportunities for storage; improved water quality monitoring; climate change; earthquakes/tsunamis.

| | | | |
|---------------------------|-----------|--------------------|------------------------------------|
| Funding requested: | \$330,300 | Cost-share: | \$177,000 (secured cash & in-kind) |
|---------------------------|-----------|--------------------|------------------------------------|

Other support requested: Requests OWRD to serve as a co-convener. Planning assistance (stakeholder outreach), data/information assistance (coordinating information gathering from state agencies), technical assistance (analyze current and projected demands, study surface water and groundwater connectivity).

Executive Summary:

The City of Newport, Oregon, on behalf of the Mid-Coast Basin Planning Group, is submitting this proposal to conduct a place-based integrated water resources planning study in the Mid-Coast Basin. Initially this study will examine the water supply and demand needs within the Lower Siletz, Lower Yaquina, and Devils Lake-Moolack Frontal watersheds.

The primary goals of this planning study are to:

1. Engage a diverse set of stakeholders within the Mid-Coast Basin in an effort to better understand and characterize water resources within the study area;
2. Collaboratively identify the current and future in-stream and out-of-stream water supply needs and demands;
3. Collaboratively develop and prioritize options to respond to any identified imbalances, and;
4. Develop an integrated water resources plan that will inform long-term planning and support regional strategies for addressing watershed challenges in the Mid-Coast Basin.

Inter-Agency Review Team Feedback

Letters of Interest were evaluated against a set of review factors by both OWRD and a state inter-agency team. Evaluation criteria were used to identify strengths and weaknesses of the proposed efforts in the areas of **leadership, partnerships, capacity, integration, planning needs/outcomes, and approach**. This proposal performed well against all of the evaluation criteria. The review team also assessed **need for assistance, readiness, and likelihood of developing a plan in 2-3 years**, which is summarized below.

Strengths

- **Leadership.** The proposed convener has a demonstrated interest in and commitment to water resources planning and management. Within the past few years the proposed convener has actively pursued more collaborative approaches to address regional water issues, which indicates a willingness and ability to serve broader interests.
- **Partnerships.** The proposed convener has actively reached out to local partners representing diverse interests. The proposal indicates local momentum among partners toward characterizing and addressing water challenges in a more collaborative and integrated manner.
- **Capacity.** The proposed convener has assembled a consulting team to assist with coordinating partners and implementing the planning steps. The proposed convener is actively seeking other funding sources to support regional planning efforts.
- **Integration.** The proposed convener demonstrates awareness of existing groups, data and plans and it is likely that this process will build off of and integrate with other relevant and complementary efforts. The proposal expresses an intent to address water quantity, water quality and ecological needs.
- **Needs/Outcomes.** The proposal conveys clear and immediate needs to address water issues in an integrated approach given current water shortages and water quality challenges.
- **Approach.** The proposal emphasizes the proposed convener’s intent to establish metrics and milestones to evaluate and communicate progress.

Weaknesses (to be addressed in Partnership with OWRD during planning step 1)

- **Leadership.** The proposed convener covers a limited geographic area and may not be perceived as impartial or inclusive by some partners. The proposed convener has invited OWRD to serve as a co-convener, which may help to address this.
- **Partnerships.** As proposed, the list of partners may not be inclusive of all relevant interests. The current list of partners includes many downstream users, but it is unclear how the proposed convener will engage with upstream partners through the planning process.
- **Capacity.** Many small community partners on the coast may not have the capacity to fully participate in planning efforts. This proposal is largely dependent on a consulting team for support.
- **Integration.** The proposed effort is focused on water supply and quantity. While this is an appropriate driver for integrated water planning, it is important that the effort continue to pursue planning in an integrated approach (considering water quality and ecosystem health).
- **Needs/Outcomes.** The proposal indicates an interest in investigating and addressing multiple water issues, but focuses on storage as a solution. While it is appropriate for the proposal to indicate potential solutions, the convener needs to remain open and flexible to the needs and interests of the partner organizations as they emerge through the collaborative process.
- **Approach.** The current planning scale is unclear and does not follow hydrologic boundaries.

| | |
|---|----------|
| Need for Assistance: | High |
| Readiness: | High |
| Likelihood of Completing a Plan: | Moderate |

Letter of Interest: NW_02C_18_Tualatin

Overview of Evaluation and Funding Recommendation

Recommended for Funding: Not at this time

Grouping: Group A Proposal demonstrates strengths against all of the criteria, has a moderate need for assistance, demonstrated readiness, and has a high likelihood of completing a plan in 2-3 years.

Summary (see following page for more information):

- Very strong proposal with a capable local convener and a strong network of local partners who are likely to contribute to a multi-year collaborative effort.
- The proposal demonstrates a clear understanding of the IWRS and Place-Based Planning and is likely to result in a Plan that is consistent with Department expectations.
- This place has very high capacity partners and already appears to be employing integrated and collaborative approaches to water planning. This place has a unique combination of factors that may limit transferability of lessons learned. Place-Based Planning would support and enhance existing efforts but may not serve as a catalyst in this community.
- This proposal clearly demonstrates readiness to undertake Place-Based Integrated Water Resources Planning in partnership with OWRD . OWRD encourages the proposed convener and partners to stay engaged during the pilot phase to inform program development and also strongly encourages partners to apply for future funding opportunities associated with place-based planning (if and when available).

Summary Information from Letter of Interest

Convener: Tualatin River Watershed Council

Co-Convener: Oregon Water Resources Department (*requested*)

Hydrologic unit/scale: Tualatin River Watershed

Water issues/drivers: Water quantity limited for instream and out-of-stream needs; population growth; low summer flows; potential groundwater declines; water quality issues; storm water management; climate change; restoration of complex ecological functions.

Funding requested: \$225,000 **Cost-share:** \$82,700 (secured cash and in-kind)

Other support requested: Requests OWRD to serve as a co-convener. Technical assistance (water rights analyses, modeling, scenario planning, GIS support, etc), planning assistance (project management, stakeholder outreach, etc.)

Executive Summary: The Tualatin Basin is home to over 570,000 residents, abundant natural resources, and provides a strong economic base for the State of Oregon, all of which require a dependable supply of clean water. Continued population and economic growth will continue to increase water demands. As observed during the past year’s drought conditions the current system was stressed meeting the current instream and out of stream needs. The Tualatin Basin has a long history of collaboration centered on water issues including flow release coordination, addressing environmental and endangered species regulations and future water supply issues. Building on these collaborations, water interest are ready to work together to address future water needs in anticipation of a projected doubling of its population over the next 40 years, increased multiple water demands and the environmental issues created by changing climate patterns. The Tualatin River Watershed Council (TRWC) is in a unique position to bring together its partners to develop and refine efforts to integrate water quantity, quality and ecological health into a plan. Because the Tualatin Basin includes both urban and rural as well as industry, agriculture, forestry and a growing population, it is an ideal place to test planning strategies. TRWC proposes a pilot project with a community engagement process resulting in a Tualatin Basin integrated water resources plan that align with the OWRD 2015 Draft Place-Based Planning Guidelines. We expect to highlight the potential to work collaboratively in developing solutions that include changes of policy, institutional processes, and a list of potential projects which benefit a variety of interests that include water supply, water quality,

ecological health and floodplain management.

Inter-Agency Review Team Feedback

Letters of Interest were evaluated against a set of review factors by both OWRD and a state inter-agency team. Evaluation criteria were used to identify strengths and weaknesses of the proposed efforts in the areas of **leadership, partnerships, capacity, integration, planning needs/outcomes, and approach**. This proposal demonstrated strengths against all of the evaluation criteria. The review team also assessed **need for assistance, readiness, and likelihood of developing a plan in 2-3 years**, which is summarized below.

Strengths

- **Leadership.** The proposed convener has diverse representation on its board, serves multiple interests and can be perceived as impartial and inclusive. The proposed convener has a demonstrated interest in and commitment to water resources planning and management.
- **Partnerships.** The Letter indicates clear support from a strong network of partners representing diverse water interests. The proposed convener has past experience with building and maintaining strong partnerships.
- **Capacity.** The proposed convener and partners have led or participated in multi-year collaborative planning efforts. Partners have pledged in-kind contributions.
- **Integration.** The proposed convener demonstrates awareness of existing groups, data and plans and it is likely that this process will likely build on and integrate with other relevant and complementary efforts. The Letter expresses an intent to address water quantity, water quality and ecological needs.
- **Needs/Outcomes.** Partners in the basin already pursue integrated and collaborative approaches to water planning, but there is a continual need to share resources, identify needs and develop integrated solutions.
- **Approach.** The proposed convener and partners were actively involved in the development of the IWRS and demonstrate a clear understanding of the IWRS and 2015 Draft Place-Based Planning Guidelines.

Weaknesses

- **Leadership.** The proposed convener has invited OWRD to serve as a co-convener, but given the high capacity of local partners, it may be more appropriate to invite another local partner to co-convene to increase capacity and clout.
- **Capacity.** Limited staff capacity could make the day-to-day work of coordinating the planning effort challenging for the convener, especially in such a complex basin with so many diverse stakeholders.
- **Integration.** Local partners have already engaged in integrated and collaborative water planning efforts in the past. This Letter should better articulate the specific ways that place-based planning would improve integration and collaboration.
- **Needs/Outcomes.** The Letter does not emphasize the timeliness of this particular opportunity (i.e, are there opportunities lost if it does not move forward now?) This place has a unique combination of factors that may limit transferability of lessons learned.
- **Approach.** Given the complexity of the Tualatin Basin, this particular proposal could benefit from greater clarity and structure in the proposed approach.

| | |
|---|----------|
| Need for Assistance: | Moderate |
| Readiness: | High |
| Likelihood of Completing a Plan: | High |

Letter of Interest #: NW_02A_02_WillametteHeadwaters

Overview of Evaluation and Funding Recommendation

Recommended for Funding: Not at this time

Grouping: Group A Proposal demonstrates strengths against all of the criteria, has a moderate need for assistance, demonstrated readiness, and a high likelihood of completing a plan in 2-3 years.

Summary (see following page for more information):

- Very strong proposal with a capable local convener and a strong network of local partners who are likely to contribute to a multi-year collaborative effort.
- The Letter demonstrates a clear understanding of the IWRS and Place-Based Planning and is likely to result in a Plan that is consistent with Department expectations.
- This place has very high capacity partners and already appears to be employing integrated and collaborative approaches to water planning. This place has a unique combination of factors that may limit transferable lessons learned. Place-Based Planning would support and enhance existing efforts but may not serve as a catalyst in this community.
- This proposal clearly demonstrates readiness to undertake Place-Based Integrated Water Resources Planning in partnership with OWRD . OWRD encourages the proposed convener and partners to stay engaged during the pilot phase to inform program development and also strongly encourages partners to apply for future funding opportunities associated with place-based planning (if and when available).

Summary Information from the Letter of Interest

Convener: Lane Council of Governments

Hydrologic unit/scale: Three headwaters sub-basins of the Willamette River Basin (Coast Fork, Middle Fork, and McKenzie River).

Water issues/drivers: Need to actively maintain and improve health of the Upper Willamette watershed since lower watersheds rely on effective management of the headwaters; climate change; water quality (instream and groundwater); population growth and new demands on the resource; integration between different users.

Funding requested: \$269,400 **Cost-share:** \$105,120 (pending/secured cash & in-kind)

Other support requested: Participation in meetings, technical assistance, information/data assistance, planning assistance (stakeholder outreach, guidance).

Executive Summary: Our region is eager to initiate place-based planning to effectively address the unique combination of factors and interests in the Willamette River headwaters. We are ready to undertake such a process because: there is a common understanding that water is and will be a primary concern of the region; the region has a growing population, heavily water dependent economy and majority of federally held forest lands; and project participants have a proven track record of innovation and collaboration. This project initiates a dialogue and integrated planning process to understand resource complexities and address regional water resources issues. The proposed work involves a broad foundation of interested parties working towards the common purpose of maintaining healthy water resources. Current water supplies, water quality and the status of ecosystem health will be assessed and described acknowledging the interrelated nature of water resources and creating a common starting point for discussions about issues and their resolutions. Place-based planning addresses our local challenges by providing a context-specific venue through which to analyze cumulative effects and opportunities. This results in multiple objective designs across agency/stakeholder efforts achieving efficiencies and ensuring effectiveness. Stakeholders will articulate mutual interests, address issues of common concern, and identify near and long term solutions for the benefit of multiple entities and programs (drinking water, TMDL, agriculture, floodplain, etc.). The resulting Integrated Water Resources Plan will address groundwater and surface water quality, supply, wiser use, increased resiliency to climate change as well

as serve as a model for others.

Inter-Agency Review Team Feedback

Letters of Interest were evaluated against a set of review factors by both OWRD and a state inter-agency team. Evaluation criteria were used to identify strengths and weaknesses of the proposed efforts in the areas of **leadership, partnerships, capacity, integration, planning needs/outcomes, and approach**. This proposal demonstrated strengths against all of the evaluation criteria. The review team also assessed **need for assistance, readiness, and likelihood of developing a plan in 2-3 years**, which is summarized below.

Strengths

- **Leadership.** The proposed convener serves a broad public interest, is perceived as inclusive and impartial, and can engage with a broad representation of water interests. The proposed convener has a demonstrated interest in and extensive experience with collaborative water planning efforts.
- **Partnerships.** The Letter indicates clear support from a strong network of partners. The proposed convener has past experience with building and maintaining strong partnerships.
- **Capacity.** The proposed convener and partners have led or participated in multi-year collaborative planning efforts in the past. The proposed convener has considerable experience and expertise in regional planning efforts.
- **Integration.** The Letter communicates a clear understanding of the IWRS and place-based planning principles. The Letter indicates an awareness of existing groups, data and plans and it is likely that this process will likely build on and integrate with other relevant and complementary efforts. The proposal expresses an intent to address water quantity, water quality and ecological needs.
- **Needs/Outcomes.** The proposal clearly conveys the need to maintain and enhance the health of the Willamette headwaters and highlights the value of integrating the results of past studies with current planning efforts.
- **Approach.** The approach is very well reasoned, demonstrates a clear understanding of the IWRS principles, and describes how this process will effectively build on the 2015 Draft Place-based Planning Guidelines. The proposal identifies clear activities and outputs.

Weaknesses

- **Partnerships.** The current list of partners emphasizes agency involvement, but has limited representation from user groups aside from municipalities (e.g., private landowners, recreational users).
- **Integration.** Local partners have already engaged in integrated and collaborative water planning efforts in the past. This proposal should better articulate the specific ways that place-based planning would improve integration and collaboration.
- **Needs/Outcomes.** The proposal does not emphasize the timeliness of this particular opportunity (i.e., are there opportunities lost if it does not move forward now?)
- **Approach.** The proposed scale is very large and there is not sufficient rationale for why this is the proposed planning area.

| | |
|---|----------|
| Need for Assistance: | Moderate |
| Readiness: | High |
| Likelihood of Completing a Plan: | High |

Letter of Interest: NW_02B_16_Pudding

Overview of Evaluation and Funding Recommendation

Recommended for Funding: Not at this time

Grouping: Group B Proposal scored well against the evaluation criteria, has emerging partnerships, a high need for assistance, demonstrated readiness, and presents interesting opportunities to test the Guidelines given its high need and desire to pursue more integrated and collaborative approaches.

Summary (see following page for more information):

- Strong proposal with an emerging network of partners who are likely to contribute to a multi-year collaborative effort.
- In the spirit of collaboration, the proposal was collectively written by a group of local interests and demonstrates an interest in sustaining momentum toward place-based integrated water resources planning.
- The need for assistance is clearly articulated and place-based planning presents an opportunity to foster collaboration among local partners to fully characterize water resources and identify integrated solutions for water challenges in an area with limited collaborative planning experience.
- The relatively untested nature of collaborative planning in this basin may not make it a good fit during the pilot phase.
- OWRD is encouraged by the interest that was generated around place-based planning in this area and urges the proposed conveners and partners to continue working together to characterize water resources and develop a shared vision. OWRD also encourages partners to apply for future funding opportunities associated with place-based planning (if and when available).

Summary Information from the Letter of Interest

| | |
|-------------------------------|--|
| Convener: | Marion County |
| Co-Convener: | City of Silverton |
| Hydrologic unit/scale: | Pudding River Watershed covering 528 square miles in Marion and Clackamas Counties. |
| Water issues/drivers: | Opportunities for shared water supply between City of Silverton and City of Mount Angel; two groundwater limited areas; declining shallow and deep aquifers; water quality negatively affects drinking water supplies and instream habitat; population growth; vital agricultural sector that relies on water; climate change. |

| | | | |
|---------------------------------|--|--------------------|-----------------------------|
| Funding requested: | \$300,000 | Cost-share: | \$877,600 (pending in-kind) |
| Other support requested: | \$82,500 worth of technical and planning assistance (<i>estimate</i>). | | |

Executive Summary: The Partners of the Pudding River Watershed Planning Group (PRWPG) are committed to working together to develop a place-based integrated water resources plan. The PRWPG was established in the Fall of 2015 in response to increasing concerns and need for collaboration on water resources in the basin. This voluntary collaborative partnership is seeking technical assistance funding from the Oregon Water Resources Department for the purpose of further defining the scope of the place-based plan, assessing water resources within the Pudding River watershed, and implementing a planning strategy with feasible solutions that achieve multiple water resources objectives. The PRWPG is a diverse collective of community organizations committed to achieving consensus solutions addressing water quantity (in-stream and out-of-stream), water quality, and ecological health. The PRWPG believes that these issues and opportunities are not mutually exclusive and through collaboration and coordination our organizations can better serve the Pudding River Watershed and its stakeholders. Individual partners offer decades of studies, plans, and programs that can be built upon in this process to better address water needs of the basin in an open collaborative venue. The Partners are eager for the next steps toward future

collaboration. As a first product of the PRWPG, the Partners have worked collaboratively to draft this Letter of Interest for place-based planning funding.

Inter-Agency Review Team Feedback

Letters of Interest were evaluated against a set of review factors by both OWRD and a state inter-agency team. Evaluation criteria were used to identify strengths and weaknesses of the proposed efforts in the areas of **leadership, partnerships, capacity, integration, planning needs/outcomes, and approach**. This proposal performed well against all of the evaluation criteria. The review team also assessed **need for assistance, readiness, and likelihood of developing a plan in 2-3 years**, which is summarized below.

Strengths

- **Leadership.** The proposed convener serves a broad public interest, is perceived as inclusive and impartial, and can engage with a broad representation of water interests.
- **Partnerships.** The proposal was collaboratively written by a diverse network of partners. There is momentum among partners to explore more integrated and collaborative approaches to water planning in a basin where planning has been pursued in a more distributed manner.
- **Integration.** The proposal was written collaboratively by multiple interests and expresses an intent to address water quantity, water quality and ecological needs. The proposal demonstrates awareness of existing groups, data and plans and it is likely that this process will build off of and integrate with other relevant and complementary efforts.
- **Needs/Outcomes.** The proposal conveys clear and immediate needs to address water issues in an integrated manner given current water shortages and water quality challenges. Partners have worked together on a limited basis in the past and pursuing a more collaborative approach could help identify novel solutions to long-standing issues.
- **Approach.** The proposed approach emphasizes the need to build a strong foundation for future collaboration. The need to focus on Planning Step #1 is well-reasoned.

Weaknesses

- **Leadership.** The description of the proposed convener is limited and it is unclear how engaged the convener will be in leading the place-based planning effort. A statement from the convener would provide clarification and strengthen the proposal.
- **Partnerships.** Letters of support from current and potential partners would strengthen this proposal by demonstrating commitment and specifying likely contributions.
- **Capacity.** The proposed convener’s capacity to support the day-to-day coordination of the planning effort is unclear. If the proposed convener does not have the capacity, it is unclear which of the partners will supplement that capacity. The proposed convener and partners have limited experience with past collaborative efforts and based on the information provided it is unclear whether the partners are truly dedicated to building collaborative capacity. The estimated cost per hour for partner organizations seems high.
- **Needs/Outcomes.** The proposal does not emphasize the timeliness of this particular opportunity (i.e., are there opportunities lost if it does not move forward?)
- **Approach.** Without more collaborative history, it is difficult to determine with certainty if this is likely to result in an integrated plan. The total project cost seems high.

| | |
|---|----------|
| Need for Assistance: | High |
| Readiness: | High |
| Likelihood of Completing a Plan: | Moderate |

Letter of Interest: SW_15_13-14-19_Rogue

Overview of Evaluation and Funding Recommendation

Recommended for Funding: Not at this time

Grouping: Group B Proposal scored well against the evaluation criteria, has emerging partnerships, a high need for assistance, demonstrated readiness, and presents interesting opportunities to test the Guidelines given its high need and desire to pursue more integrated and collaborative approaches.

Summary (see following page for more information):

- Strong proposal with a capable local convener and a network of engaged local partners who are likely to contribute to a multi-year collaborative effort.
- Builds on an existing high-capacity partnership with a governance agreement and presents an opportunity to test integration with the Oregon Watershed Enhancement Board (OWEB) Strategic Action Planning process.
- The proposed convener and partners have high capacity, a solid reputation and visible support, but the proposed approach needs to be revisited and refined to be more aligned with the IWRS and the 2015 Draft Place-Based Planning Guidelines. Given the issues identified with the proposed approach, this area is not recommended for funding during the pilot phase.
- There is a lot of momentum around collaborative planning in the Rogue Basin and OWRD encourages the proposed convener and partners to stay engaged during the pilot phase to inform program development. OWRD also encourages partners to apply for future funding opportunities associated with place-based planning (if and when available).

Summary Information from the Letter of Interest

Convener: Rogue Basin Partnership

Co-Convener: Oregon Water Resources Department (*requested*)

Hydrologic unit/scale: Six priority watersheds and corridors in the Rogue Basin where flow is a key limiting factor as identified in the Rogue Restoration Action Plan, including Elk Creek-Big Butte, Little Butte, Ashland-Bear Creek, Evans Creek, Applegate and the Upper Illinois.

Water issues/drivers: Decreasing water availability; climate change; water quality (temperature, bacteria and nutrients); declining summer flows; over-appropriated water sources; upland forest management.

| | | | |
|---------------------------|-----------|--------------------|--|
| Funding requested: | \$175,000 | Cost-match: | \$65,500 (secured cash and in-kind) \$16,356 (pending cash and in-kind) |
|---------------------------|-----------|--------------------|--|

Other support requested: Requests OWRD serve as co-convener. Planning assistance (stakeholder outreach), data/information assistance (provide and interpret monitoring data), technical assistance (water rights and water availability analyses).

Executive Summary: The Rogue Basin Partnership (RBP) Place-Based Planning effort would develop a consistent process of outreach and engagement in each priority watershed and corridor of the Rogue Restoration Action Plan where water resources management is a limiting factor. The priority areas will be lumped into six units: Elk Creek-Big Butte, Little Butte, Ashland-Bear Creek, Evans, Applegate, and the Upper Illinois. As part of this planning process, project partners would host community forums in each of the six priority areas for stakeholders to share their information, concerns, and offer potential solutions to water resource issues. The outcome of this place-based planning effort would be a summary plan of the integrated water resources analysis, prioritization of actions, and the list of specific implementation strategies in the priority areas. As a long-term goal, RBP will eventually expand outreach beyond the priority areas in order to encourage a broader planning field that includes key stakeholders whose jurisdictions reside outside of our priority areas. Ultimately, RBP will leverage the tools developed through this planning process to apply these implementation strategies across the entire Rogue Basin.

Inter-Agency Review Team Feedback

Letters of Interest were evaluated against a set of review factors by both OWRD and a state inter-agency team. Evaluation criteria were used to identify strengths and weaknesses of the proposed efforts in the areas of **leadership, partnerships, capacity, integration, planning needs/outcomes, and approach**. This proposal performed well against all of the evaluation criteria. The review team also assessed **need for assistance, readiness, and likelihood of developing a plan in 2-3 years**, which is summarized below.

Strengths

- **Leadership.** The proposed convener has diverse representation, serves multiple interests and can be perceived as impartial and inclusive. The proposed convener has a demonstrated interest in and commitment to water resources planning and management.
- **Partnerships.** The proposal indicates support from a strong network of partners representing diverse water interests. The partners have been assembled and already have a governance agreement in place to structure involvement.
- **Capacity.** The Partnership has demonstrated capacity to work collaboratively and undertake multi-year planning efforts.
- **Integration.** The proposed convener demonstrates awareness of existing groups, data and plans and it is likely that this process will build off of and integrate with other relevant and complementary efforts. This proposal provides an opportunity to test how Place-Based Planning can integrate with the Oregon Watershed Enhancement Board (OWEB) Strategic Action Planning process.
- **Needs/Outcomes.** The need to address water supply issues in flow-limited sub-basins is clearly articulated.
- **Approach.** The proposal will utilize information from and build on the existing Rogue Restoration Action Plan.

Weaknesses

- **Leadership.** It is unclear which individual(s) from the proposed convening body will be the local champion of the process. This needs to be clarified.
- **Partnerships.** It is unclear if the existing partnership is or will be fully inclusive of the necessary interests in the proposed sub-watersheds and how the proposed convener intends to structure engagement at the sub-basin scale.
- **Integration.** The proposed effort is focused on water supply to meet instream and conservation needs. While this is a driver for integrated water planning, it is important that the effort continue to pursue planning in an integrated approach (considering out-of-stream demands).
- **Needs/Outcomes.** The proposal does not emphasize the timeliness of this particular opportunity (i.e., are there opportunities lost if it does not move forward now?)
- **Approach.** The proposed hydrologic areas are not contiguous and are distributed throughout the larger Rogue Basin. It is unclear if these would be separate plans or would inform one plan. By focusing on areas where instream flow is the limiting factor, this proposal may miss important water challenges faced by other out-of-stream water users.

| | |
|---|----------|
| Need for Assistance: | High |
| Readiness: | High |
| Likelihood of Completing a Plan: | Moderate |

Letter of Interest: NC_07_05_WallaWalla

Overview of Evaluation and Funding Recommendation

Recommended for Funding: Not at this time

Grouping: Group B Proposal scored well against the evaluation criteria, has emerging partnerships, a high need for assistance, demonstrated readiness, and presents interesting opportunities to test the Guidelines given its high need and desire to pursue more integrated and collaborative approaches.

Summary (see following page for more information):

- Strong proposal with a capable local convener and a network of engaged local partners who are likely to contribute to a multi-year collaborative effort.
- The Walla Walla Basin is in the midst of a bi-state planning effort with Washington partners and requests additional support from Oregon. The need for and timeliness of assistance related to this effort is clearly articulated. It is unclear, however, if the Washington partners will be committed to piloting Oregon’s 2015 Draft Place-Based Planning Guidelines.
- The complexity of a bi-state planning effort may not make it a good fit during the pilot phase.
- The Walla Walla has significant experience with building past collaborative efforts and could help to inform place-based planning. OWRD encourages the proposed convener and partners to stay engaged during the pilot phase to inform program development. OWRD also encourages partners to apply for future funding opportunities associated with place-based planning (if and when available).

Summary Information from the Letter of Interest

Convener: Walla Walla Basin Watershed Council

Hydrologic unit/scale: Walla Walla Watershed, one 4th field hydrologic unit (HUC 8) northeast of Umatilla County, Oregon

Water issues/drivers: Builds on existing bi-state planning efforts to address: groundwater declines; limited stream flows that do not currently meet target flows set by regulatory agencies and tribes; need to sustain agricultural water demands through conservation efficiencies and coordinated basin-wide storage projects.

| | | | |
|---------------------------|-----------|--------------------|---|
| Funding requested: | \$135,000 | Cost-share: | \$40,000 (secured in-kind) \$80,000 (pending cash & in-kind) |
|---------------------------|-----------|--------------------|---|

Other support requested: Technical assistance (analysis of deep and shallow aquifer trends, peer review of surface water/groundwater model, peer review of winter water availability for aquifer recharge that also meets ecological needs, policy/legal assistance on protecting instream flows).

Executive Summary: Place-Based Water Planning is urgently needed in the Walla Walla Basin to develop a Strategic Action Plan for improving stream flows and out of stream water availability. The Walla Walla Basin Watershed Council (WWBWC) has been asked by two entities (Walla Walla River Irrigation District and the Confederated Tribes of the Umatilla Indian Reservation) to lead this planning process and to secure the necessary OWRD planning funds. The WWBWC has been in existence since 1994 and has served as the convener for several Walla Walla Basin water and/or fish recovery assessment and planning efforts. For the last year and a half, the WWBWC has been the co-lead for a Bi-state Walla Walla Streamflow Improvement Study funded by the Washington State Office of Columbia River. Our Washington partner co-leading this effort is the Walla Walla Water Management Partnership. Office of Columbia River (OCR) funds have covered the costs of developing an initial action plan, assessing the fisheries, developing an integrated surface water groundwater model for the valley, assessing the feasibility of a water exchange system, designing water delivery efficiencies, and analyzing instream flow protection options. However, the OCR funds are limited, and Oregon Place-based planning funds and technical support will help us complete our needed Strategic Action Plan that will describe and prioritize the water management projects that will allow us to attain our in stream and out of stream water goals.

Inter-Agency Review Team Feedback

Letters of Interest were evaluated against a set of review factors by both OWRD and a state inter-agency team. Evaluation criteria were used to identify strengths and weaknesses of the proposed efforts in the areas of **leadership, partnerships, capacity, integration, planning needs/outcomes, and approach**. This proposal performed well against all of the evaluation criteria. The review team also assessed **need for assistance, readiness, and likelihood of developing a plan in 2-3 years**, which is summarized below.

Strengths

- **Leadership.** The proposed convener, is perceived as neutral and impartial, can likely engage with a broad representation of water interests, and has a demonstrated interest in water planning. The proposed convener has a history of leading and participating in multi-year collaborative planning efforts.
- **Partnerships.** A number of partners are already contributing to planning efforts and there are is intent to engage additional partners representing different interests, including municipalities.
- **Capacity.** The proposed convener has a demonstrated ability to lead and manage projects in the Walla Walla Basin.
- **Integration.** The proposal demonstrates an understanding of and an intent to address water issues in an integrated manner, looking at both above and below ground water issues, water quantity, water quality and ecosystem health. This proposal provides a timely opportunity to test how Place-Based Planning can integrate bi-state planning efforts.
- **Needs/Outcomes.** The need to balance instream flows with out-of-stream demands is clearly articulated and urgent.
- **Approach.** The proposal clearly describes specific technical assistance needs that could benefit the bi-state planning effort.

Weaknesses

- **Leadership.** It is unclear if and how the leadership role will be shared with Washington partners.
- **Partnerships.** The proposal would be strengthened by letters of support from Washington partners.
- **Capacity.** Anticipated partner commitments and contributions to the proposed planning effort are unclear.
- **Integration.** The proposal references numerous past planning efforts and documents, but does not specify how this effort will build on these efforts in a cohesive manner.
- **Needs/Outcomes.** Significant investments have been made in planning and project implementation and it is unclear what outcomes would result specifically from piloting the 2015 Draft Place-Based Planning Guidelines.
- **Approach.** It is unclear how this proposal will build on the 2015 Draft Place-Based Planning Guidelines. The proposal could benefit from a schedule and a recommended strategy for coordinating Place-Based Planning with the expectations of Washington partners.

| | |
|---|----------|
| Need for Assistance: | Moderate |
| Readiness: | High |
| Likelihood of Completing a Plan: | Moderate |

Letter of Interest: NW_01_01_NorthCoast

Overview of Evaluation and Funding Recommendation

Recommended for Funding: Not at this time

Grouping: Group C Proposal demonstrates capable leadership and emerging partnerships, but did not perform as well against the criteria, and aspects of the approach need to be strengthened.

Summary (see following page for more information):

- This proposal includes some promising characteristics, including capable leadership and an opportunity to expand current partnerships to include new interests.
- There is visible support from many local partners and citizens, but based on the information provided, it is difficult to discern if this effort would be able to engage the necessary stakeholders.
- The proposal demonstrates a basic understanding of the IWRS and Place-Based Planning, but lacks sufficient information about how this effort will integrate diverse water interests. The proposed approach needs to be revisited and refined to be more aligned with the IWRS and the 2015 Draft Place-Based Planning Guidelines.
- OWRD encourages the proposed conveners and partners to continue assessing and building local understanding of and support for place-based planning in partnership with the Department.

Summary Information from the Letter of Interest

Convener: Oregon State Representative Gomberg

Co-Convener: North Coast Land Conservancy

Hydrologic unit/scale: North Coast Basin drinking water, surface watersheds in Clatsop and Tillamook Counties which will soon receive DEQ Source Water Assessments: Neskowin, Tierra del Mar, Beaver, Tillamook, Netarts, Oceanside/Cape Meares, Rockaway Beach, Nehalem, Manzanita, Arch Cape, Falcon Cove, Cannon Beach, Seaside, Warrenton, Youngs River, Astoria, and Wickiup.

Water issues/drivers: Integration with updated source water assessments; management of source water areas to address water quality and quantity issues (recharge, temperature, turbidity, sedimentation, toxins); water quality affecting habitat and drinking water; climate change.

| | | | |
|---------------------------|-----------|--------------------|--|
| Funding requested: | \$200,000 | Cost-share: | \$46,000 (secured cash & in-kind) >\$18,000 (pending in-kind) |
|---------------------------|-----------|--------------------|--|

Other support requested: OWRD planning and facilitation assistance, technical assistance (coordinating technical information gathering).

Executive Summary: North Coast Land Conservancy is requesting \$200,000.00 from the Water Resources Department to develop place-based, integrated water resource plans that holistically address water quality and quantity issues within the North Coast Basin. Like many areas in Oregon, our watersheds support a wide range of benefits for both human uses and the environment – including water for drinking, agriculture, forestry and recreation, and are the source of essential habitat for fish and wildlife. Over time, we realized that potential solutions are not only complex but require the involvement of all water users within a basin to find equitable solutions. We have a significant opportunity to mesh the place-based water resource plans with DEQ’s pending release of Oregon Coast *Drinking Water Protection Planning: A Resource Guide* and updated Source Water Assessments. Each community will have technical data to identify water quality and quantity risks within their drinking watersheds. Despite spending millions on infrastructure, water districts in small coastal communities have not achieved needed protections of drinking water sources, as identified in the 2001 DEQ assessment. While drinking water source protection is the driver, we understand that we need to look holistically at the many issues that are affecting water quality and quantity within our basins to find lasting solutions. To secure clean, abundant drinking water, and ensure all water users of our basins may move toward water security, we intend to follow the Water Resources Department model of place-based integrated water resources planning. We will explore effective solutions that focus, through a facilitated process, on achieving

accountable, cost-effective and enforceable actions.

Inter-Agency Review Team Feedback

Letters of Interest were evaluated against a set of review factors by both OWRD and a state inter-agency team. Evaluation criteria were used to identify strengths and weaknesses of the proposed efforts in the areas of **leadership, partnerships, capacity, integration, planning needs/outcomes, and approach**. This proposal performed well against some of the evaluation criteria. The review team also assessed **need for assistance, readiness, and likelihood of developing a plan in 2-3 years**, which is summarized below.

Strengths

- **Leadership.** The proposed conveners serve a broad public interest, may be perceived as inclusive and impartial, and can likely engage with a broad representation of water interests. The proposed conveners would bring political clout and capacity to the planning process.
- **Partnerships.** The proposal indicates clear support from a strong network of partners and there is evidence of strong civic engagement.
- **Integration.** The proposal indicates a basic awareness of existing plans and efforts that could benefit from improved integration. The proposal presents an opportunity to test integration with source water assessments conducted by Oregon Department of Environmental Quality.
- **Needs/Outcomes.** The proposal clearly communicates the immediate need to better understand the cause and impact of water quality issues.

Weaknesses

- **Partnerships.** As proposed, the list of partners may not be inclusive of all relevant interests. The current list of partners includes many downstream users, but it is unclear how the proposed convener will engage with upstream partners through the planning process.
- **Capacity.** Based on the information provided, is unclear if the proposed conveners or partners have led or participated in multi-year collaborative planning efforts in the past.
- **Integration.** The proposal focuses primarily on water quality and does not address other water issues, including quantity and ecosystem health. The proposal does not describe other interests within the proposed planning area and how they would be invited to participate. There is limited rationale for why an integrated approach will help to address current and future water challenges.
- **Needs/Outcomes.** The near-term needs focus almost exclusively on water quality issues and the Letter does not demonstrate an awareness of other water needs and challenges in the area. The outcomes are focused on watershed management and protection.
- **Approach.** The proposal focuses on one particular issue and potential outcomes for that issue. The proposed convener and partners need to remain open and flexible to the needs and interests of the partner organizations as they emerge through the collaborative process. The schedule does not seem appropriate given the complexity of the issues presented.

| | |
|---|----------|
| Need for Assistance: | Moderate |
| Readiness: | Moderate |
| Likelihood of Completing a Plan: | Moderate |

Letter of Interest: NW_02B_16_PolkCountyWatersheds

Overview of Evaluation and Funding Recommendation

Recommended for Funding: Not at this time

Grouping: Group C Proposal demonstrates capable leadership and emerging partnerships, but did not perform as well against the criteria, and aspects of the approach need to be strengthened.

Summary (see following page for more information):

- This proposal includes some promising characteristics, including capable leadership and an opportunity to expand current partnerships. The Letter articulates the need to engage additional water interests, but it is difficult to gauge interest, readiness and commitment of partners.
- The Letter demonstrates a basic understanding of the IWRS and Place-Based Planning, but lacks sufficient information about how this effort will integrate diverse water interests.
- The proposed conveners have high capacity and a clear interest in place-based planning, but the proposed approach needs to be revisited and refined to be more aligned with the IWRS and 2015 Draft Place-Based Planning Guidelines.
- OWRD encourages the proposed convener and partners to continue assessing and building local understanding of and support for place-based planning in partnership with the Department.

Summary Information from the Letter of Interest

Convener: Polk County Board of Commissioners

Co-Convener: Polk County Planning Division

Hydrologic unit/scale: Watersheds that span Polk County, including portions of the Upper Willamette, Middle Willamette and Yamhill hydrologic units.

Water issues/drivers: Optimizing water use and delivery through water sharing, conservation and storage opportunities; understanding imbalances between seasonal supply and demand; need to integrate agricultural, instream and municipal users.

| | | | |
|---------------------------|-----------|--------------------|------------------------------------|
| Funding requested: | \$225,000 | Cost-share: | \$105,240 (secured cash & in-kind) |
|---------------------------|-----------|--------------------|------------------------------------|

Other support requested: Not specified.

Executive Summary: Polk County is proposing to develop a Place-Based Integrated Water Resources Plan that would be developed in a collaborative process with State and local regulators, large and small water suppliers, a range of water users, including municipal, agricultural, tribes, and non-government environmental organizations. Polk County has been developing a plan to address future water supply and demand issues for more than a decade. The collaborative planning efforts lead by Polk County to date have identified additional potential water supplies and revealed that the projected water deficits by 2050 for many of the water providers in Polk County may be met through water conservation, transfers of water rights, and development of available water rights as an alternative to developing new supplies. The place-based planning process would allow Polk County to include agricultural and environmental interests in the planning process along with water providers, water users, and other special interests to develop a better understanding of current and future instream and out-of-stream water needs and demands. Polk County believes that the Plan would result in cooperative agreements and strategic solutions that address water issues and needs beyond 2050 and improve the ecological health of the planning area. Polk County is convinced that the proposed Place-Based Integrated Water Resources Plan fits perfectly with Polk County’s previous efforts and is a small-scale, focused approach to the place-based planning process. This effort as a pilot would allow for learning and experimentation to demonstrate how place-based planning could be implemented at a larger scale.

Inter-Agency Review Team Feedback

Letters of Interest were evaluated against a set of review factors by both OWRD and a state inter-agency team. Evaluation criteria were used to identify strengths and weaknesses of the proposed efforts in the areas of **leadership, partnerships, capacity, integration, planning needs/outcomes, and approach**. This proposal performed well against some of the evaluation criteria. The review team also assessed **need for assistance, readiness, and likelihood of developing a plan in 2-3 years**, which is summarized below.

Strengths

- **Leadership.** The proposed conveners serve a broad public interest, are perceived as inclusive and impartial, can likely engage with a broad representation of water interests, and have a demonstrated interest in water planning. The proposed conveners would bring political clout and capacity to the planning process.
- **Partnerships.** The proposal has a good initial list of current and potential partners representing diverse interests. Some of these partners are currently engaged in cooperative efforts.
- **Capacity.** The proposed conveners have a demonstrated ability to lead multi-year planning efforts. The proposed conveners have secured cash match to support the planning effort.
- **Integration.** The proposal indicates a desire to better integrate municipal, instream and agricultural water needs.
- **Needs/Outcomes.** The proposal indicates that there are clear opportunities to improve water sharing agreements between water providers.
- **Approach.** The proposed approach is detailed and builds on the 2015 Draft Place-Based Planning Guidelines.

Weaknesses

- **Partnerships.** Based on the information provided, it is difficult to gauge current or future partner interest in and commitment to a multi-year collaborative planning effort. The Letter does not explicitly mention how OWRD would be involved in this planning effort.
- **Capacity.** While the capacity of the proposed conveners is considerable, it is difficult to gauge the current or potential contributions of partners. Anticipated partner commitments and contributions to the proposed planning effort are unclear. Additional letters of support and pledges of in-kind contributions could strengthen this proposal.
- **Integration.** Aside from county planning processes, there is limited mention of other local efforts or plans that this process would build upon. The proposal focuses on water quantity and makes limited mention of water quality and ecosystem health.
- **Needs/Outcomes.** The proposal is focused primarily on municipal water needs and demonstrates a limited understanding of other out-of-stream and instream needs. The outcomes are primarily focused on meeting the needs of municipal providers. The Letter does not emphasize the timeliness of this particular opportunity (i.e., are there opportunities lost if it does not move forward now?)
- **Approach.** The approach focuses on developing water sharing agreements between water providers and does not adequately consider other water interests. There is little rationale provided for the proposed planning scale.

| | |
|---|----------|
| Need for Assistance: | Moderate |
| Readiness: | Moderate |
| Likelihood of Completing a Plan: | Moderate |

Letter of Interest: NW_02B_16_SouthSantiam

Overview of Evaluation and Funding Recommendation

Recommended for Funding: Not at this time

Grouping: Group C Proposal demonstrates capable leadership and emerging partnerships, but did not perform as well against the criteria, and aspects of the approach need to be strengthened.

Summary (see following page for more information):

- This proposal includes some promising characteristics, including capable leadership and an opportunity to expand existing partnerships to include new interests.
- The proposal demonstrates a basic understanding of the IWRS and Place-Based Planning, but lacks sufficient information about how this effort will integrate diverse water interests.
- The proposed convener and partners have high capacity and a clear interest in place-based planning, but the proposed approach needs to be revisited and refined to be more aligned with the IWRS and 2015 Draft Place-Based Planning Guidelines.
- OWRD encourages the proposed convener and partners to continue assessing and building local understanding of and support for place-based planning in partnership with the Department.

Summary Information from the Letter of Interest

| | |
|-------------------------------|--|
| Convener: | South Santiam Watershed Council |
| Hydrologic unit/scale: | South Santiam River Basin, one 4 th field hydrologic unit. |
| Water issues/drivers: | Increasing demand on existing water resources, which are already over-allocated; low summer flows; climate change; potential groundwater declines; stream temperature; invasive species; toxic algal blooms; high levels of arsenic in groundwater; outdated source water assessments; ecological needs for listed species; restoration of complex ecological functions. |

| | | | |
|---------------------------------|---|--------------------|----------------------------|
| Funding requested: | \$150,000 | Cost-share: | \$56,000 (secured in-kind) |
| Other support requested: | \$30,000 in planning, technical and information assistance (estimated in-kind OWRD contribution). | | |

Executive Summary:

We want to initiate Place Based Planning because there is a need and an express interest by local communities. The South Santiam River provides drinking water to the communities of Sweet Home, Lebanon, as well as Albany and recently Sodaville (both located outside the Santiam basin). Because over 75,000 people rely on the South Santiam River for drinking water, agriculture, recreation, industry and in-stream needs, there is a strong desire to formulate a coherent and consistent plan to guide the region as demands on water resources increase. The need for a plan will become more apparent as the population of the Willamette Valley increases amid the uncertainty of the South Santiam River to meet water demands amid the scenario of a changing climate. The area is ready because several agencies, business, and local government are already collaborating on land management and livability issues in east Linn County. Encompassing water resources is a logical next step within the existing collaborative framework. Place based water resources planning will not only further collaboration amongst local partners but will 1) provide a sound basis for evaluating future water resource needs of municipalities reliant upon the South Santiam River, 2) provide a risk assessment of threats to the drinking water source and 3) provide a consistent plan in the case of a contaminant spill into the South Santiam river, reservoirs or tributaries.

Inter-Agency Review Team Feedback

Letters of Interest were evaluated against a set of review factors by both OWRD and a state inter-agency team. Evaluation criteria were used to identify strengths and weaknesses of the proposed efforts in the areas of **leadership, partnerships, capacity, integration, planning needs/outcomes, and approach**. This proposal performed well against some of the evaluation criteria. The review team also assessed **need for assistance, readiness, and likelihood of developing a plan in 2-3 years**, which is summarized below.

Strengths

- **Leadership.** The proposed convener is perceived as neutral and impartial, can likely engage with a broad representation of water interests, and has a demonstrated interest in water planning.
- **Partnerships.** The proposal has a good initial list of current and potential partners representing diverse interests. The partners have been assembled and already have a governance agreement in place to structure involvement.
- **Capacity.** The proposed convener and partners have led or participated in multi-year collaborative planning efforts in the past. This process would build off of an existing collaborative process.
- **Integration.** The proposal communicates an understanding of diverse water needs, including water quantity, water quality and ecosystem health. The Letter presents an opportunity to test integration with an existing collaborative process (South Santiam All Lands Collaborative).
- **Needs/Outcomes.** The proposal communicates an understanding of diverse water needs, including water quantity, water quality and ecosystem health. There is a clear need to integrate users in the South Santiam watershed.
- **Approach.** The proposed approach builds on the 2015 Draft Place-Based Planning Guidelines.

Weaknesses

- **Partnerships.** The proposal discusses how to resolve conflict conceptually, but it is unclear how this relates to current partnerships and stakeholder engagement.
- **Capacity.** Based on the information provided, it is difficult to gauge the current or potential contributions of partners.
- **Integration.** There is limited mention of other local efforts or plans that this process would build upon. The proposal does not clearly communicate the benefits of addressing current water challenges using a more integrated approach.
- **Needs/Outcomes.** The proposal does not provide sufficient information about the out-of-stream water users and their needs. The proposal does not provide much information about the anticipated results or outcomes of a planning process and does not emphasize the timeliness of this particular opportunity (i.e., are there opportunities lost if it does not move forward now?)
- **Approach.** The proposed approach lacks detail in several places and does not have a schedule for how planning would progress.

| | |
|---|----------|
| Need for Assistance: | Moderate |
| Readiness: | Moderate |
| Likelihood of Completing a Plan: | Moderate |

Letter of Interest: NW_02B_16_EolaAmityWalnutHills

Overview of Evaluation and Funding Recommendation

Recommended for Funding: Not at this time

Grouping: Group D Proposal did not provide adequate information to evaluate some criteria, effort is at the early stages of initiating a collaborative effort, and aspects of the approach need to be strengthened.

Summary (see following page for more information):

- The proposal demonstrates a basic understanding of the IWRS and Place-Based Planning, but lacks sufficient information about how this effort will integrate diverse water interests.
- Based on the information provided, it is difficult to gauge the appropriateness of the proposed convener, strength of existing partnerships and the overall readiness of this effort.
- There is a need for collaborative and integrated water planning, but broad local support is not evident and the proposed approach needs to be strengthened.
- OWRD encourages the proposed convener and partners to continue assessing and building local understanding of and support for place-based planning in partnership with the Department.

Summary Information from the Letter of Interest

Convener: Eola-Amity Hills American Viticulture Area Association

Co-Convener: Open to and seeking a co-convener (*potentially OWRD*)

Hydrologic unit/scale: Eola-Amity Hills and Walnut Hill Groundwater Limited Areas (GLAs) in Polk and Yamhill counties.

Water issues/drivers: Important agricultural region; limited groundwater supply with no alternative water supply source; opportunities for conservation, recharge and storage; opportunities for more cost-effective solutions through coordination.

| | | | |
|---------------------------|-----------|--------------------|----------------------------|
| Funding requested: | \$233,100 | Cost-share: | \$58,275 (pending in-kind) |
|---------------------------|-----------|--------------------|----------------------------|

Other support requested: Not specified.

Executive Summary: We propose the contiguous Eola-Amity Hills/Walnut Hill Groundwater Limited Areas as the study area. This region is seeing increased residential, agricultural and industrial development. There are three water districts primarily serving areas on the valley floor, but virtually all tax lots in the hill areas are dependent on water captured on-site. The Eola-Amity Hills are a diverse topography with ample opportunity to catch rainwater from rooftops, surface water, and a populace capable and interested in exploring the full suite of options available. The place-based planning process represents an ideal fit for approaching the dependence on limited groundwater in an integrated, inclusive way that invites all inhabitants to participate in this integrated and timely process. The Eola-Amity Hills area comprises about 230 square miles on the west side of the Willamette Valley between Salem and McMinnville, Oregon. This is the total area designated as Groundwater Limited Areas, and it is this precise geography that we propose for this study. The area is roughly equally divided between Polk County to the south and Yamhill County to the north. The total area has three relatively distinct parts of roughly equal area: the Hills, the East Plain and the West Plain. The area is largely rural, and agriculture is the principal occupation. Since 1980, a robust wine grape industry has developed in the hills leading to the creation of many wineries as well. Additionally, blueberries, hazelnuts and nursery stock have become very significant agricultural crops over essentially the same time period. In addition to berries, nuts and nursery stock, the plains still support cereal grains, grass seed, dairies, livestock and specialty seed production. All this has led to increasing irrigation pressure and when coupled with a rapidly growing human population, water has become a significant challenge for the region.

Inter-agency Review Team Feedback

Letters of Interest were evaluated against a set of review factors by both OWRD and a state inter-agency team. Evaluation criteria were used to identify strengths and weaknesses of the proposed efforts in the areas of **leadership, partnerships, capacity, integration, planning needs/outcomes, and approach**. This proposal did not provide adequate information to evaluate some criteria. The review team also assessed **need for assistance, readiness, and likelihood of developing a plan in 2-3 years**, which is summarized below.

Strengths

- **Leadership.** The proposed convener is committed to an inclusive and transparent process.
- **Partnerships.** The proposal has a good initial list of potential partners and the skills/resources they might be able to provide.
- **Capacity.** The proposed convener is motivated and enthusiastic about building collaborative capacity within their community.
- **Integration.** The proposal identifies the need to coordinate water users across the landscape to maximize capture, storage and recharge opportunities. This presents a unique opportunity to foster collaborative planning in groundwater limited areas, which could serve as a model for other groundwater limited areas.
- **Needs/Outcomes.** The need to address water supply issues in a groundwater limited area is clearly articulated, as well as the benefits of a more collaborative approach.
- **Approach.** The proposed planning scale is well-reasoned and compelling given the unique challenges of a groundwater limited area.

Weaknesses

- **Leadership.** It is unclear if the proposed convener serves a broad public interest and can convene a balanced representation of water interests.
- **Partnerships.** It is difficult to gauge current or future partner interest in a multi-year collaborative planning effort.
- **Capacity.** The proposed convener and partners have limited experience initiating or undertaking a multi-year collaborative planning effort. Intended partner contributions are not evident.
- **Integration.** There is no synopsis of existing efforts, information or plans that this process would build upon. There is limited rationale for why an integrated approach will help to address current and future water challenges. The proposal is primarily focused on capture and storage opportunities.
- **Needs/Outcomes.** The proposal is focused primarily on out-of-stream water capture and storage for agricultural use.
- **Approach.** This effort is in the very initial stages and is just beginning to take shape; consequently the approach is lacking important detail.

| | |
|---|-----------|
| Need for Assistance: | Moderate |
| Readiness: | Uncertain |
| Likelihood of Completing a Plan: | Uncertain |

Letter of Interest: SW_17_19_LowerRogue

Overview of Evaluation and Funding Recommendation

Recommended for Funding: Not at this time

Grouping: Group D Proposal did not provide adequate information to evaluate some criteria, effort is at the early stages of initiating a collaborative effort, and aspects of the approach need to be strengthened.

Summary (see following page for more information):

- The proposal demonstrates a basic understanding of the IWRS and Place-Based Planning, but lacks sufficient information about how this effort will integrate diverse water interests.
- Based on the information provided, it is difficult to gauge the appropriateness of the proposed convener, strength of existing partnerships and the overall readiness of this effort.
- There is a need for collaborative and integrated water planning, but broad local support is not evident and the proposed approach needs to be strengthened.
- OWRD encourages the proposed convener and partners to continue assessing and building local understanding of and support for place-based planning in partnership with the Department.

Summary Information from the Letter of Interest

Convener: Wild and Scenic Rivers

Co-Convener: Oregon Water Resources Department (*requested*)

Hydrologic unit/scale: South Coast Basin, Lower Rogue Basin within Curry County, including Port Orford, Gold Beach and Brookings.

Water issues/drivers: Water quality (bacteria, dissolved oxygen and temperature); limited data/knowledge about water quality; land use and water quality; storm water run-off; brackish drinking water.

| | | | |
|---------------------------|-----------|--------------------|--|
| Funding requested: | \$187,500 | Cost-share: | \$6,000 (secured in-kind) \$108,000 (pending in-kind) |
|---------------------------|-----------|--------------------|--|

Other support requested: Requests OWRD serve as co-convener. Planning assistance (stakeholder outreach and engagement, meeting coordination), data/information assistance (provide and interpret monitoring data), technical assistance (water rights and water availability analyses).

Executive Summary: Wild and Scenic Rivers would like to initiate the Place- Based Planning process, as we are a water-rich area located in the South Coast and Lower Rogue Basins. Our area is geographically and socio-economically disconnected from the rest of the state. We have identified significant water-related challenges, have the capacity for long-term planning and are open to an integrative, co-convening approach with various local stakeholders in our community to articulate our needs. Our watershed basin is a key area of significant biological value in the state, a tourism mecca, and is historically overlooked by funders due to various factors. As mentioned, we have identified key areas of potential project focus due to past and present involvement in our community. Our experience running an emerging non-profit, as well as living and dwelling in the community, has made us aware of potential projects and concerns that have been articulated and initiated, but not completed. These are manageable and actionable projects that could, in turn, point to more long term solutions and invested community problem- solving. We have highlighted these in this document. We would also like to emphasize that we are committed to demonstrating an openness to process and eagerness to articulate the needs of a wide range of local voices as we move forward. We would also welcome state technical assistance as well as support from various state agencies as we progress.

Inter-Agency Review Team Feedback

Letters of Interest were evaluated against a set of review factors by both OWRD and a state inter-agency team. Evaluation criteria were used to identify strengths and weaknesses of the proposed efforts in the areas of

leadership, partnerships, capacity, integration, planning needs/outcomes, and approach. This proposal did not provide adequate information to evaluate some criteria. The review team also assessed **need for assistance, readiness, and likelihood of developing a plan in 2-3 years**, which is summarized below.

Strengths

- **Leadership.** The proposed convener indicates a commitment to collaboration and the intent to bring together a balanced representation of interests.
- **Partnerships.** The proposal has a good initial list of potential partners that represent diverse interests within the proposed planning area. The proposed convener indicates a commitment to maintaining an open and transparent process.
- **Capacity:** The proposed convener is motivated and enthusiastic about building collaborative capacity.
- **Integration.** The proposal indicates a basic awareness of existing plans and efforts that could benefit from improved integration.
- **Needs/Outcomes.** The proposal clearly communicates the immediate need to better understand the cause and impact of water quality issues.
- **Approach.** The proposal indicates the intent to build off of the 2015 Draft Place-Based Planning Guidelines and planning steps.

Weaknesses

- **Leadership.** Materials provided with the proposal indicate that the proposed convener may not be perceived as impartial. The purpose and the mission of the convening organization is unclear and it is uncertain if they have the clout and capacity necessary to convene this effort.
- **Partnerships.** It is difficult to gauge current or future partner interest in a multi-year collaborative planning effort.
- **Capacity.** Given that the convening organization appears to be newly established, it is uncertain if they have the capacity to support a multi-year collaborative effort. Intended partner contributions to the planning effort are not evident.
- **Integration.** The proposal focuses primarily on water quality and does not address other water concerns, including quantity and ecosystem health. There is limited rationale for why an integrated approach will help to address current and future water challenges. The proposal does not mention how this effort might integrate with the existing collaborative planning efforts.
- **Needs/Outcomes.** The near-term needs focus exclusively on water quality issues and the proposal does not demonstrate an awareness of other water needs and challenges in the area.
- **Approach.** The proposed planning area does not follow hydrologic boundaries. The proposal demonstrates a basic understanding of the IWRS and Place-Based Planning, but lacks sufficient information about how this effort will integrate diverse water interests.

| | |
|---|-----------|
| Need for Assistance: | Moderate |
| Readiness: | Uncertain |
| Likelihood of Completing a Plan: | Uncertain |

Letter of Interest: E_09_08_Powder

Overview of Evaluation and Funding Recommendation

Recommended for Funding: Not at this time

Grouping: Group D Proposal did not provide adequate information to evaluate some criteria, effort is at the early stages of initiating a collaborative effort, and aspects of the approach need to be strengthened.

Summary (see following page for more information):

- The proposal demonstrates a basic understanding of the IWRS and Place-Based Planning, but lacks sufficient information about how this effort will integrate diverse water interests.
- Based on the information provided, it is difficult to gauge the appropriateness of the proposed convener, strength of existing partnerships and the overall readiness of this effort.
- There is a need for collaborative and integrated water planning, but broad local support is not clearly established and the proposed approach needs to be strengthened.
- OWRD encourages the applicant and partners to continue assessing and building local understanding of and support for place-based planning in partnership with the Department.

Summary Information from the Letter of Interest

Convener: Powder Valley Water Control District

Co-Convener: Baker Valley SWCD (*potential*)

Hydrologic unit/scale: Area to be considered is within the Powder/Brownlee watershed. Specific to the sub-basin of the North Powder, Anthony Creek, Wolf Creek and other minor drainages contained in this area.

Water issues/drivers: Recurring drought declarations; climate change; need to diversify water catchment and storage opportunities in the basin for social, economic and environmental benefits.

| | | | |
|---------------------------|-----------|--------------------|----------------------------|
| Funding requested: | \$350,000 | Cost-share: | \$87,500 (pending in-kind) |
|---------------------------|-----------|--------------------|----------------------------|

Other support requested: Planning assistance (review documents), technical assistance (review documents, compile available information and assess viability of potential projects).

Executive Summary: Since the inception of the “District” (1968, first recorded minutes and establishment of the District) the need for better management of uncontrolled flows of water was very apparent. Excessive floods were destroying agricultural land, and also threatening dwellings, infrastructure and municipalities within our sub-basin. Also the need for an extended season of available water for economic and production agriculture, the spin-off benefit of consistent stream flows for environmental concerns were achieved by the impoundment structures of Wolf Creek and Pilcher Creek Reservoirs. The accomplishment of these projects and the vastly improved efficiency projects have greatly increased our community’s economic base, productivity, employment, and sustainability. It is a realization that these existing components can be expanded for even greater multiple use benefits for not only our local communities economy, but to further address aquatic/environmental concerns. Place-based planning presents an opportunity to address all facets of water issues within our area in an integrated fashion and we are grateful for this opportunity. In the interest of brevity, for now we will not go into a longer explanation of all the benefits this grant presents.

Inter-Agency Review Team Feedback

Letters of Interest were evaluated against a set of review factors by both OWRD and a state inter-agency team. Evaluation criteria were used to identify strengths and weaknesses of the proposed efforts in the areas of **leadership, partnerships, capacity, integration, planning needs/outcomes, and approach**. This proposal did not provide adequate information to evaluate some criteria. The review team also assessed **need for assistance, readiness, and likelihood of developing a plan in 2-3 years**, which is summarized below.

Strengths

- **Leadership.** The proposed convener has a demonstrated interest and commitment to water planning, including past experience with planning for and implementing water projects. Adding a potential co-convenor could provide additional credibility and capacity.
- **Partnerships.** The proposal has a good initial list of potential partners.
- **Integration.** The proposal expresses an interest in addressing multiple water issues through an integrated and collaborative approach.
- **Needs/Outcomes.** The proposal expresses a need for place-based planning to address multiple water challenges.

Weaknesses

- **Leadership.** Based on the information provided, it is unclear if the proposed convener serves a broad public interest and can convene a balanced representation of water interests. The proposal would benefit from a description of why the proposed convener is an appropriate leader of this process, including any past experience with building and sustaining collaborative efforts.
- **Partnerships.** Based on the information provided is unclear if this effort is likely to include a balanced representation of interests. The list of key partners does not appear to include any instream interests. Furthermore, it is difficult to gauge current or future partner interest in a multi-year collaborative planning effort.
- **Capacity.** Based on the information provided, it is unclear if the proposed convener or partners have the interest and capacity to sustain a multi-year collaborative planning effort. There are no visible commitments of in-kind or cash contributions.
- **Integration.** There is no synopsis of existing efforts or information that this process would build upon. There is limited rationale for why an integrated approach will help to address current and future water challenges. The proposal is primarily focused on capture and storage opportunities.
- **Needs/Outcomes.** The proposal presents a surface level understanding of multiple water needs, and only presents storage as a potential future project.
- **Approach.** It was difficult to ascertain the proposed planning scale based on the materials provided. It is unclear how this effort will build on the 2015 Draft Place-Based Planning Guidelines. The proposal and budget lack detail and clarity. The proposal demonstrates a basic understanding of the IWRS and Place-Based Planning, but lacks sufficient information about how this effort will integrate diverse water interests.

Need for Assistance:

Moderate

Readiness:

Uncertain

Likelihood of Completing a Plan:

Uncertain



Public Comments on Funding Recommendations



Place-Based Integrated Water Resources Planning Grant

Summary of Public Comments

The Department received a total of 13 public comments on the Place-Based Planning pilot grant funding recommendations. Several of the 13 responses commented on both the funding recommendations and the place-based planning program in general. Four of the responses were received through an internet comment form. The table below provides a high-level summary of the comments, which are also attached in full.

Table 1. Summary of Public Comments

| Number | Letter of Interest | Summary of Comments |
|--------|--------------------------|--|
| 5 | General | One comment expresses support for the place-based planning program and, though not recommended for funding, hopes to continue working with the Department. One comment recommends sideboards be placed on planning efforts to focus on water supply rather than water quality. Three comments point out that any place-based planning effort should include robust consideration of freshwater ecosystem health and water needs and that each of the recommended pilots should ensure broad representation of interest, including conservation interests. Several express desire for more time to comment. |
| 5 | E-08-06-UpperGrandeRonde | Three comments express support for this recommended pilot. One comment points out the economic tie to good water management and supports the place-based planning effort for a sustainable environment and community. One comment expresses concerns about the proposed short timeline to develop strategies and solutions, and encourages the partners to develop a more comprehensive array of potential solutions. |
| 3 | E-12-10-MalheurLake | Two comments express support for this recommended pilot. One comment encourages more participation of ecological and instream interests, and also suggests the partners secure the participation of the Burns-Paiute Tribe. |
| 2 | NC-06-21-LowerJohnDay | One comment expresses gratitude for being recommended for funding and mentions their dedication to being a positive model for future planning areas. One comment encourages integration of groundwater monitoring into place-based planning efforts, if this pilot is selected for funding. One comment encourages more participation of ecological and instream interests. |
| 2 | NW-18-01-MidCoast | One comment expresses enthusiasm for this planning effort and points out the timing is ideal and the need is great. One comment expresses concern that the planning effort would address water quality and recommended placing sideboards on the grant award to limit the scope to water supply conservation and development. |
| 2 | NW-02B-16-Pudding | This Letter of Interest is not currently recommended for funding. One comment expresses support for place-based planning in this area and asks that consideration be given for future funding. In the event the Commission would select this proposal for funding, one comment expressed opposition to funding that would aid efforts to build a dam and reservoir on privately held property and emphasizes the need to build a truly collaborative process that does not presuppose outcomes. |

General Comments

Name - Affiliation: April Olbrich – Tualatin River Watershed Council

Comment: See Attachment 1

Name - Affiliation: Leslie Bach – The Nature Conservancy

Comment: See Attachment 2

Name - Affiliation: Samantha Murray – Oregon Environmental Council

Comment: See Attachment 3

Name - Affiliation: Mary Anne Nash – Farm Bureau, Katie Fast – Oregonians for Food and Shelter, Heath Curtiss – Oregon Forest and Industries Council

Comment: See Attachment 4

Name - Affiliation: Kimberly Priestley – WaterWatch

Comment: See Attachment 5

E-08-06-UpperGrandeRonde

Name - Affiliation: Kathryn Frenyea - Union County Soil and Water Conservation District

Comment (Online): I am submitting this form on behalf of the Union Soil and Water Conservation District. Though many studies have been done over several decades, no viable solutions have been met or truly sought. The funding could provide more immediate solutions to long standing irrigation and flooding concerns. The large partnership ensures a wide range of concerns are addressed. The District is a committed partner in the place based Integrated water resource planning for the Upper Grande Ronde.

Name - Affiliation: A. Daniel Stark - Union County Economic Development Corporation

Comment (Online): The Union County Economic Development Corporation is committed to investing in a healthy and growing local economy. The water resources in Union County are a essential asset to the local economy supporting both agriculture and industry. The proposed integrated water resources planning will provide the needed information and data to assess the water related needs of the community, present and future demands on this resource, and identify integrated solutions to address long-term water management in the County to support a sustainable environment and sustainable communities.

Name - Affiliation: Mark Davidson - Union County Commissioner

Comment: See Attachment 6

Name - Affiliation: Samantha Murray – Oregon Environmental Council

Comment: See Attachment 3

Name - Affiliation: Mary Anne Nash – Farm Bureau, Katie Fast – Oregonians for Food and Shelter, Heath Curtiss – Oregon Forest and Industries Council

Comment: See Attachment 4

E-12-10-Malheur Lake

Name - Affiliation: Corrina Chase

Comment (Online): Please provide more funding to the Malheur project. With the impact they've had from the militia occupation they will need more support in recovering.

Name - Affiliation: Samantha Murray – Oregon Environmental Council

Comment: See Attachment 3

Name - Affiliation: Mary Anne Nash – Farm Bureau, Katie Fast – Oregonians for Food and Shelter, Heath Curtiss – Oregon Forest and Industries Council

Comment: See Attachment 4

NC-06-21-LowerJohnDay

Name - Affiliation: Sandy McKay – Gilliam Soil and Water Conservation District

Comment: See Attachment 7

Name - Affiliation: Samantha Murray – Oregon Environmental Council

Comment: See Attachment 3

NW-18-01-MidCoast

Name - Affiliation: Tim Gross - City of Newport

Comment: On behalf of the City of Newport, I'd like to express our sincere enthusiasm for being selected as a pilot study for Integrated Water Resources Planning in the Mid-Coast Basin. The City remains committed to the goals of the place-based planning process, and we look forward to pilot testing the new guidelines. This project will help build a new network of partners to mobilize the Mid-Coast Basin and address local water challenges. The timing for this pilot study is perfect -- and the response from local project partners has been overwhelming. In fact, 100% of the partners we have approached thus far have enthusiastically agreed to participate, which speaks to the overwhelming need to advance this type of work. Regarding the unfunded portion of the project, we will pursue funding from the Bureau of Reclamation's Basin Study Program, and will continue to secure matching funds from local sources. The grant award from OWRD will be a strong catalyst to advancing the work, and we are honored to be recommended as a pilot site. Thank you for selecting the Mid-Coast Basin Planning Group to help advance the Department's objectives. Sincerely, Timothy E. Gross, Public Works Director and City Engineer, City of Newport.

NW-02B-16-Pudding

Name - Affiliation: Vic Gilliam – Oregon State Representative

Comment: See Attachment 8

Name - Affiliation: Janet Neuman – Lawyer with Tonkon Torp LLP

Comment: See Attachment 9 and Attachment 10



Engaging the community to sustain our watershed

February 18, 2016

Harmony S J Burrig
Oregon Water Resources Department
Place-Based Planning
725 Summer Street NE, Suite A
Salem, OR 97301

Dear Harmony:

Re: Tualatin River Watershed Council Letter of Interest
For OWRD Place-Based Planning Grant

I'm writing on behalf of the Tualatin River Watershed Council to provide comments for Oregon Water Resources Department place-based planning grant funding.

First, we want to thank OWRD for its development of a place-based planning funding source and the opportunity to submit a place-based planning letter of interest. We appreciate all of the assistance from you and OWRD in developing and refining our letter of interest; the letter of interest provided us with the opportunity to better define our goals and objectives in the planning for our watershed's future. We also appreciate obtaining additional input from you at a later date regarding the evaluation of our letter of interest.

Lastly, we look forward to other opportunities to work with OWRD including hosting a public meeting(s) in the Tualatin Basin as well as potential opportunities to develop and implement place-based planning for our watershed.

Sincerely,
April
April Olbrich
Coordinator
Tualatin River Watershed Council



The Nature Conservancy in Oregon
821 SE 14th Avenue
Portland, OR 97214-2537

tel 503 802-8100
fax 503 802-8199
nature.org/oregon

Feb 18, 2016

To: Oregon Water Resources Department

From: Leslie Bach, Director of Freshwater Programs

Re: Funding recommendations for Place-Based Integrated Water Resources Planning Grants

Thank you for the opportunity to comment on the funding recommendations for the Place-Based Integrated Water Resources Planning Grants. As outlined in our January 6, 2016 comments on the proposals received, we have been actively involved in the evolution of this program and we support community-led efforts to balance water management in basins across Oregon.

We do not have specific comments for any of the four selected proposals, however we wanted to reiterate two comments we made in our January letter. First, an integrated water resources strategy must necessarily include a robust analysis of freshwater ecosystem health and water needs. This is explicitly stated in the planning guidance, the legislation which funded this program, and in the Oregon Integrated Water Resources Strategy. Every basin in the state includes important freshwater resources, including rivers, lakes, wetlands, and water-dependent plants and animals that require access to clean water. The requirements of these ecosystems and species must be accounted for. We think each of the proposals would benefit from additional attention to the ecological aspects of water resources planning.

Second, the program overview states that the intent of the program is to develop a “*balanced representation of water interests within a hydrologic area*”. This must necessarily include adequate representation from the conservation / environmental community in all phases of the project, not simply in a secondary stakeholder group. The proposals all have significant representation from the water user community, but limited representation from the conservation community.

We encourage the Water Resources Department to consider these comments in moving forward with implementing this new grant program. This would include ensuring that the grantees follow the requirements as outlined in the legislation and program guidelines that call for accounting for ecosystem health and water needs and for balanced representation across all interests.



222 NW Davis Street
Suite 309
Portland, OR 97209-3900
503.222.1963
www.oeconline.org

February 18, 2016

Water Resources Department
725 Summer Street NE, Suite A
Salem, OR 97301

Delivered by electronic mail via placebasedplanning@wrд.state.or.us.

Re: Comments on funding recommendations

Dear Director Tom Byler:

Please accept these comments on behalf of Oregon Environmental Council (OEC). OEC has a long history of engaging in efforts that will enhance water quality and conservation in the state of Oregon, including both the Integrated Water Resources Strategy (IWRS) and SB 266. We are pleased that elements of these efforts are now coming to fruition and offer the comments below on the four proposed funding recommendations for place-based planning (PBP) pilot projects.

Given the limited funds available, it is of paramount importance that the pilot projects selected reflect the intent of SB 266 and the IWRS and set the standard for future projects. The PBP Guidelines created by the Water Resources Department (WRD) in 2015 are an important first step in evaluating whether projects meet these twin goals.

Below are some general comments on all proposals, as well as specific comments on the four proposed funding recommendations.

General Comments

OEC is grateful for the opportunity to provide feedback on the proposals before you, but would have appreciated a more generous public comment period. As you know, project Letters of Interest were due just before the December holiday and comments were due immediately after. Similarly, the January window for comments on the four funding recommendations was only seven days long. In both cases, OEC believes WRD would have received a greater number of more thoughtful comments with an extended comment period, which would have positively impacted this selection process and project development.

Generally, we believe all proposals could benefit from increased participation from organizations and stakeholders that represent ecological interests and instream water needs. Broad representation is of paramount importance if project proponents hope to achieve the spirit of SB 266, which calls for place-based integrated water resources strategies that are developed “in collaboration with a balanced representation of interests.” It goes on to say that projects must “balance current and future instream and

out-of-stream needs.”

Additionally, we'd encourage all project proponents to take a more comprehensive look at how they will develop integrated solutions for meeting long-term water needs, in accordance with the 2015 PBP Guidelines, Planning Step Four. Most proposals do not sufficiently explore the full suite of tools for meeting instream and out-of-stream water needs, today and into the future. Specifically, watershed and habitat restoration, instream flow protections and water quality protections are all identified in that document as key priorities for the state of Oregon, but are largely not discussed in the proposals before you.

Lower John Day proposal

OEC appreciates the capacity that the already-existing John Day Basin Partnership (Partnership) brings to the table, as well as the associated infrastructure. This includes the signed Memorandum of Understanding and the clearly stated common vision, both of which dovetail nicely with the goals of SB 266.

We are pleased to see that the Nature Conservancy, Freshwater Trust, Trout Unlimited and Confederated Tribes of the Warm Springs are all formal partners in the Partnership and trust that each will also play a substantial role in this process. However, it is unclear whether all groups have committed to participating in this Lower John Day PBP process, if funded. If any group is unable or unwilling to participate in this more narrow effort, we urge the Partnership to secure participation from other experts who can sufficiently represent instream and ecological interests within this discrete process.

We appreciate that stated outcomes of this effort include: achieving healthy fish populations; meeting summer base flows; meeting water quality standards; and implementing active habitat restoration. However, much of the discussion in the Statement of Need is focused on storage, capture and conveyance, as basin precipitation shifts from snowpack to rain. We encourage WRD to work with project proponents to flesh out proposal language about long-term water conservation strategies, wetland and floodplain health and other mentioned ideas that will help the Partnership achieve its stated broader goals.

Finally, the Letter of Interest acknowledges there is little groundwater monitoring being done within the Lower John Day, but there is a noticeable trend of lowered water tables and increased demand. We encourage proponents to explicitly integrate groundwater monitoring into its PBP proposal to help quantify existing and future needs.

Upper Grande Ronde proposal

OEC appreciates that the Confederated Tribes of Umatilla Indian Reservation and Grande Ronde Model Watershed are listed as key project partners in the Upper Grande Ronde proposal. However, the process will benefit greatly from even more participation from organizations and stakeholders that can represent ecological interests and instream water needs.

We are pleased to see the acknowledgement that this watershed is a “vital ecosystem” that supports water users and “an array of fish and wildlife species,” as well as the reference to Union County Commissioners’ past effort to rehabilitate Gekeler Creek and reduce fish strandings.

We do, however, have some concerns regarding the time allotted for developing strategies and solutions. Over the first 15 months, project proponents intend to bring together all existing studies and new data to create a model of weekly demand. With only six months after to develop integrated solutions, it is crucial that the project convener proactively set up a process that lays out the full suite of potential solutions for meeting unmet needs and demands. Currently, the strategies outlined in the Letter of Interest are limited to water reuse, exchange and storage. We encourage WRD to work with project proponents to build a more comprehensive array of potential solutions that reflect those laid out in 2015 PBP Guidelines.

Harney County/Malheur Lake proposal

This proposal is timely, given recent events, and Harney County could certainly benefit from a collaborative process that will bring together disparate interests. Unfortunately, the current proposal falls short of this goal, where the list of partners does not include representation on behalf of instream or ecological interests. The High Desert Partnership is a non-profit organization committed to collaborative processes and decision-making, with expertise in facilitation. While this is extremely valuable, it is not a substitute for participation by stakeholders who can present conservation interests.

Furthermore, project proponents identify water users as their “target audience.” And when asked how they will meaningfully engage and collaborate with balanced representation of water interests, proponents mention various kinds of water users, but do not mention any groups or stakeholders that will represent instream needs or fish and wildlife.

Additionally, Burns Paiute is listed as potential partner in the attachment, but not listed as a key partner in the Letter of Interest. OEC strongly encourages project proponents to secure the participation of this tribe.

The statement of need is largely focused on declining groundwater levels and users’ displeasure with the moratorium on new and pending groundwater applications. Although there are some general references to arsenic testing, there is little discussion of water quality or ecological health, as encouraged by the 2015 PBP Guidelines.

The drivers and goals listed in the framework on page 7 are almost exclusively related to permits, the local economy, water security and management. While these are certainly key drivers and goals, the proposal would benefit from also explicitly mentioning drivers, goals and outcomes related to instream and ecological needs, as well as water quality.

Mid-Coast proposal

OEC appreciates that the Confederated Tribe of Siletz Indians and Surfrider Foundation are listed as committed partners in the Mid-Coast proposal. However, as with other proposals before you, this process will benefit greatly from participation from even more organizations and stakeholders that can represent ecological interests and instream water needs.

We are pleased to see the examples project proponents have offered of past collaborative work together, including their work to address water quality issues at Sam Moore Creek and Nye Creek, which appears to have had an excellent outcome.

We appreciate that the Statement of Need specifically mentions instream needs, including aquatic species, water-related tourism, and fisheries. We are also pleased to see proponents specifically mention the need for strategies that will address: water quality improvement; salmon monitoring (streamflow, turbidity and temperature); restoration projects; and resilience in the face of climate change, earthquake and tsunami.

The proposal does place a substantial focus on the need for increased water supply reliability and the potential for expanded water storage capacity at Rocky Creek Reservoir. While we understand the challenge of meeting water supply needs within this basin, we encourage project proponents to take into account past efforts at Rocky Reservoir. Specifically, we'd ask that stakeholders explore the need to offset any potential impacts to flow or habitat in sensitive streams as it pursues new storage facilities.

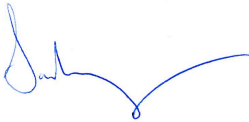
Conclusion

We appreciate WRD's efforts to implement this component of the IWRS and fund pilot place-based planning projects.

We encourage WRD to work with project proponents to ensure that ecological interests and instream water needs are well balanced against out-of-stream needs in all funded proposals. By front-loading potentially contentious discussions about the best strategies for addressing these issues, the outcomes of this effort will be more widely accepted and durable over the long term.

Please feel free to contact us with any questions.

Sincerely,

A handwritten signature in blue ink, appearing to read 'Samantha Murray', with a stylized flourish at the end.

Samantha Murray
Water Program Director
Oregon Environmental Council



February 18, 2015

Harmony Burrigh
Oregon Water Resources Department
503.986.0913
placebasedplanning@wrд.state.or.us

Re: Comments on Place-Based Planning Grant Awards

Ms. Burrigh,

Thank you for the opportunity to submit comments on the place-based planning awards announced by the Oregon Water Resource Department (“OWRD”) under the pilot program created by SB 266. In our letter dated January 6, 2016, the Oregon Farm Bureau, Oregonians for Food and Shelter, and Oregon Forest & Industries Council (“the Organizations”) raised concerns with the scope of some of the applications received by the Department. We appreciate your careful attention to these comments.

We are very supportive of the grant awards for the Upper Grande Rhonde and Malhuer Lake Basins. We believe those applications will encourage collaborative planning and address issues that are squarely within the intent of SB 266. However, we continue to have concerns about the application submitted for the MidCoast Basin, particularly the components that seek to address water quality issues and earthquake and tsunami resilience. If the Commission moves forward with funding this application, we strongly urge the Commission to place sideboards on the application to ensure the work they fund is conducted in line with the intent of the place-based planning program.

Background

The Oregon Legislature adopted SB 266 to facilitate collaborative, locally driven solutions to meeting Oregon’s water supply needs. The bill provides that the OWRD may issue grants to facilitate the preparation of place-based integrated water resources strategies that are consistent with state laws concerning the water resources of the state. Any place-based integrated water resources strategies developed using these funds must:

- (a) Be developed in collaboration with a balanced representation of interests;
- (b) Balance current and future in-stream and out-of-stream needs;

- (c) Include the development of actions that are consistent with the existing state laws concerning the water resources of this state and state water resources policy;
- (d) Facilitate implementation of local solutions;
- (e) Be developed utilizing an open and transparent process that fosters public participation; and
- (f) Be developed in consultation with the department.

SB 266(4). During the 2015 legislative session, our Organizations were involved in several conversations with the OWRD, legislators and others about the scope and intent behind the legislation. The Department made it very clear that the place-based planning program was designed to help facilitate local collaboration around water supply needs of diverse stakeholders, and would not change or otherwise circumvent Oregon law. The Department also made it clear that any place-based planning program would be designed to ensure that a diverse group of stakeholders would participate in the development of any local plans that were developed through these efforts.

The Commission Should Place Sideboards on the Grant Awards

Our organizations strongly encourage the Commission to place sideboards on the scope of the planning efforts undertaken by the planning applicants, specifically the MidCoast application. While the MidCoast application has the primary purpose of water supply development, it also proposes to address several issues that fall well outside the scope of SB 266. For example, the application states that the “Planning Group will examine strategies to reduce non-point source pollution and to continue a regional planning effort led by ODEQ to develop and implement actionable strategies to improve and protect water quality in the Basin’s rivers, tributaries, and lakes.” (MidCoast Application, Page 8). This work is beyond of the scope of the water supply development proposed through the planning effort, and is not an appropriate use of SB 266 grant funds.

As we indicated in our January 6 letter, the place-based planning program was not designed to address nonpoint source water quality. Neither can local governments or local groups directly regulate nonpoint source water quality – that authority rests solely with ODA and ODF. Indeed, a significant number of the groups that supported SB 266 would not have done so if they thought the program could be used as an end run around ODA and ODF’s nonpoint source water quality programs. While there may be a role for local planning and collaboration around water quality issues, SB 266 is not the appropriate vehicle. Were the legislature to embark on place-based water quality planning, the program would require a different approach and would likely not be housed in OWRD. In that light, the Commission should clarify that work unrelated to water supply issues falls outside the scope of the place-based planning efforts, and that OWRD funds cannot be used for those purposes.

To that end, our Organizations recommend that in addition to the requirements of SB 266, the Commission require that the funding only be used for planning around water supply conservation and development, and that the funding not be utilized to address issues that are outside the

regulatory authority of the Oregon Water Resources Department, including nonpoint source water quality or earthquake and tsunami resilience.

Please do not hesitate to contact any of the below signatories if you have any questions.

Sincerely,



Mary Anne Nash
Public Policy Counsel
Oregon Farm Bureau Federation
maryanne@oregonfb.org
541-740-4062



Katie Fast
Executive Director
Oregonians for Food & Shelter
katie@ofsonline.org
503-370-8092



Heath Curtiss
General Counsel, Director of Government Affairs
Oregon Forest & Industries Council
heath@ofic.com
503-586-1241



February 18, 2016

Oregon Water Resources Department
Attn: Place Based Planning
725 Summer Street NE, Suite A
Salem, OR 97301

Re: Comments, Placed Based Planning Proposed Funding

Dear Place Based Planning Team,

Thank you for the opportunity to comment on the WRD's proposed funding of place-based planning grants. WaterWatch served on the Integrated Water Resources Strategy Policy Advisory Group (PAG), which helped shape the guidelines for this work.

The WRD has recommended four pilot projects—Mid Coast, Upper Grande Ronde, Lower John Day, and Malheur Lake. What happens with these pilot projects will likely shape place based planning into the future. To that end, we must express our disappointment that some of the key sideboard negotiated during the IWRS policy advisory group meetings (which resulting in place based planning ultimately being included in the IWRS) do not appear to be present in most of the proposals that will be before the Commission next week.

Of specific concern is:

- (1) Lack of a balance of interests: Both the IWRS and the Senate Bill that authorized funding of place based planning (SB 266, 2015) require that place based planning be developed with a balance of interests. The IWRS strategy recognizes the importance of having full participation interested stakeholders, including NGOs specifically. However, in reviewing the proposals we were struck by the fact that the conservation “instream” seat is noticeably missing and/or underrepresented in these proposals.

Conservation groups, including local, statewide and national groups, offer a unique perspective and should be included in any “place based” planning effort. And while we appreciate that there are watershed councils included in most the proposals, watershed councils, by design, represent a broad range of interests. Water councils serve an important role, but they cannot be said to be representing an “instream” seat.

- (2) Place based planning vs. local planning: The final IWRS was purposeful in its use of “place based planning” rather than “local planning” or “community based planning”. SB 266, also, was purposeful in tying planning to “place” by defining “place based integrated water resources” as “waters that are from sources within a single drainage basin or within an area that is a subset of a single drainage basin.” Focusing on “place” was done in recognition of the fact that, by statute, water belongs to all citizens of the state not simply to those living in a particular basin. See ORS 536.310.

Despite the intent that these planning endeavors be about “place,” as is, it appears that the proposed planning efforts are focusing primarily on local input. This thread spans across the proposals---from the parties invited to the table to public outreach efforts designed to ensure “local interests” are engaged in a meaningful way. While local input is critical, the state has a duty to protect and plan for the use of water for all citizens of this state, not just the “local interests” found in any one river basin or sub-basin. To that end, we encourage the state to ensure that these planning efforts benefit from input from a balanced range of interests from across the state.

- (3) Public process: For the most part, the public processes for these planning efforts are either undefined, or appear geared towards obtaining only local input. SB 266 calls for place based planning to be developed in an open and transparent process that fosters public participation. There is broad statewide interest in these planning efforts, opportunities for statewide input should be required of all these planning efforts.

To ensure that the pilot process is successful, we request that the Commission, if it approves these grant requests, condition disbursement of monies with the following sideboards:

- Balanced table: project proponents must provide WRD with an updated list of participants invited to the planning table that reflects a balance of interests, including local/state/national NGOs.
- Public process: project proponents must provide a meaningful opportunity for public comment on any draft plan, including opportunities for those outside of the basin to provide comments (i.e. via the WRD’s website).

In addition, we would request that the Commission direct grantees that the planning processes must be done in accordance with all the guidelines set forth in SB 266 and the IWRS. Of note, any actions considered by the planning group must be consistent with existing state law and existing state water resources policy. These planning groups are not meant to be a vehicle to allow local interests to influence agency science, management and/or regulatory authorities/actions. Moreover, any plan must recognize the public interest in water. And finally, final plans must be designed to meet both instream and out-of-stream needs as mandated by ORS 536.220(3).

Additionally as to process, going forward we would request that the WRD provide more time for meaningful public input into its decision on which grant proposals to support. As it was, the first comment period fell over the Christmas/New Year’s holiday season, and the final comment period allowed for only a seven day review (in the middle of the legislative session). This made providing meaningful comments somewhat challenging.

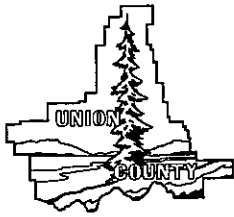
Thank you for the opportunity to comment.

Sincerely,



Kimberley Priestley
Sr. Policy Analyst

Enclosures

**UNION COUNTY
BOARD OF COMMISSIONERS**STEVE McCLURE, Commissioner
MARK D. DAVIDSON, Commissioner
JACK HOWARD, Commissioner

1106 "K" AVENUE LA GRANDE, OR 97850 PHONE (541) 963-1001 FAX (541) 963-1079 TTY 1-800-735-1232

February 18, 2016

Oregon Water Resources Commission
Oregon Water Resources Department
725 Summer Street NE, Suite A
Salem, OR 97301

Dear Commissioners:

The Oregon Water Resources Department recommendation for full funding of our Place-Based Integrated Water Resources Planning Grant for the Upper Grande Ronde River Watershed is greatly appreciated. Our approach to a collaborative effort among a balanced representation of local organizations with a vested interest in the Upper Grande Ronde River Watershed is key to our success in supporting our vital ecosystem that in turn supports our ranchers, farmers, fish and wildlife species and urban residents. To that end, through the process of drafting a Memorandum of Understanding (MOU) and establishing the decision making process for our project, our primary goal will be the inclusion of watershed interests representing water right holders and ecological interests to balance in-stream, out-of-stream, water quality and water quantity aspects of the watershed.

The grant funding, if awarded, will allow us to build on collaborative work around water resources to ensure all interests will be evaluated as the County is looking to conduct a water supply and water demand exercise through this pilot program. Changes in climate, water use and water practices in our watershed make this opportunity very timely to quickly get started with our project. This is important as the environment of water resources does not stay idle and yet decision making around water resources are made daily with limited information. Our approach to this project and our resolve to quickly start will lead to a successful database built by varied watershed interests for a more informed decision making process by all Upper Grande Ronde River Watershed users and decision makers.

Thank you for this opportunity and if the grant is awarded by the Commission, we look forward to working with your department staff on this project. I will be in attendance at your February 25 - 26, 2016 Commission meeting to support our application and answer any questions the Commission may have.

Sincerely,

Mark Davidson
Union County Commissioner

2/14/2016

Oregon Water Resources Commission
725 Summer Street NE, Suite A
Salem, OR 97301

On behalf of the John Day Basin Partnership and the Lower John Day Working Group, I would like to formally thank the Oregon Water Resources Commission for their consideration of our proposal to conduct Place-Based water resource planning in the Lower John Day Basin. We deeply appreciate this opportunity to work with OWRD to implement a first of its kind pilot project. Here in the John Day Basin there is a strong need for strategic, integrated water resource planning for social, economic, and ecological benefit. The combined effects of regional economic stagnation and altered precipitation patterns due to climate change have left the John Day Basin in dire need of a strategic plan to address these and other issues related to water resources. We are seeking a greater understanding of current water resources and needs, combined with identification of underutilized resources/conservation opportunities and future need levels along with potential infrastructure improvements.

We feel strongly that our partnership, which is made up of a comprehensive group of interests in the John Day Basin, is in a unique position to implement Place-Based, integrated water resource planning. Our partners include representation from local Tribes, SWCD's, Watershed Councils, Interest Groups, Local, State, and Federal agencies. Our partners have a long history of working collaboratively to plan and implement natural resource conservation efforts. The long history of working together has been formalized in recent years through the formation of the John Day Basin Partnership. As a whole, the Partnership possess the experience, tools, and resources to complete the Place-Based Planning process and develop a completed plan which will serve to support and inform the State's Integrated Water Resources Strategy. It is our goal to develop a process which can be used as a model in future planning areas.

We are also very appreciative of the timing of this opportunity from OWRD. The Partnership has been selected to implement Strategic Planning through the OWEB Focused Investment Partnership program. By conducting these two planning processes in coordination over corresponding timelines we will be able to accomplish more for each of the efforts than could be accomplished individually. Greatest care will be taken to ensure that the two planning processes are conducted in a complementary fashion without duplication of effort.

We are honored by the recommendations made by OWRD staff and the inter-agency review team. The members of the John Day Basin Partnership look forward to collaborating with OWRD staff to see this Place-Based Planning Process to fruition. The benefits for our area, and indeed the state, will be significant and long-lasting.

Sincerely,



Sandy McKay, Co-Lead of the Lower John Day Working Group

VIC GILLIAM
STATE REPRESENTATIVE
DISTRICT 18

Attachment 8



HOUSE OF REPRESENTATIVES

February 12, 2016

Director Tom Byler
Oregon Water Resources Department
725 Summer Street NE
Salem, OR 97301

Dear Director Byler,

Thank you for reviewing my January 15th letter regarding the Oregon Water Resources Department Place-based Integrated Water Resources Planning Grant. You will remember that I wrote in support of the joint application of Marion County and the City of Silverton in interest of the Pudding River Watershed. While I regret that my letter was received outside your public comment period, I commend the Department for their review process, careful selection and funding recommendations for Place-Based Planning Grants. It is my understanding that OWRD staff has also recommended an additional \$93,000 be held in reserve for future considerations. It is my hope that the Commission will keep the Pudding River Watershed in mind.

The Partners of the Pudding River Watershed Planning Group has demonstrated a commitment to collaborating with all interested parties. Partners of this group includes: Marion County, the City of Mount Angel, Clackamas Soil and Water Conservation District, East Valley Water District, Marion Soil and Water Conservation District and Pudding River Watershed Council. This is a well-rounded partnership, which represents a wide range of interests in my district. With the Commission's support, I believe the careful planning and collaboration of The Partners of the Pudding River Watershed Planning Group will be an excellent example for the state.

Sincerely,

A handwritten signature in blue ink that reads "Vic Gilliam".

Vic Gilliam
State Representative
House District 18

From: [Janet Neuman](#)
To: [placebasedplanning](#)
Subject: comments for the record on place-based planning grant applications [IWOV-PDX.FID811715]
Date: Thursday, February 18, 2016 2:21:23 PM
Attachments: [2016-01-21 LT Harmony Burrignt \(2\) - Comments on Letter of Interest re Pudding River.PDF](#)

In the event that the Water Resources Commission does NOT follow the staff recommendations on the place-based planning grants, I am re-submitting the comments that I submitted previously on the application of Marion County and the City of Silverton on behalf of the Pudding River Watershed Place-Based Planning Group. This application was not recommended for funding, but please convey these comments to the Commission if it decides to reconsider this particular application. Thank you.

Janet E. Neuman | Senior Counsel Attorney | Tonkon Torp LLP
1600 Pioneer Tower | 888 S.W. Fifth Avenue
Portland, Oregon 97204
503.802.5722 | FAX 503.972.7422
SSRN author page: http://papers.ssrn.com/sol3/cf_dev/AbsByAuth.cfm?per_id=39591
janet.neuman@tonkon.com | www.tonkon.com

This message may contain confidential communications and privileged information. If you received this message in error, please delete it and notify me promptly.



1600 Pioneer Tower
888 SW Fifth Avenue
Portland, Oregon 97204
503.221.1440

Janet E. Neuman
Senior Counsel

Direct Dial: 503.802.5722
Direct Fax: 503.972.7422
janet.neuman@tonkon.com

January 21, 2016

VIA E-MAIL

Ms. Harmony Burright
Place-Based Planning Grant Program
Oregon Water Resources Department
775 Summer Street NE, Suite A
Salem, Oregon 97301

Re: Comments on Letter of Interest re Pudding River

Dear Ms. Burright:

I represent a group of agricultural landowners who own land in the Victor Point area near Silverton.¹ Their property has been identified by the East Valley Water District ("EVWD" or "the District") as the District's preferred location for a dam and reservoir (the Drift Creek Dam Project) to supply irrigation water to its members. My clients are not members of the District and their lands are several miles outside the District boundaries. In fact, my clients are market competitors of some of the District members. Nonetheless, the District intends to acquire my clients' properties by condemnation if necessary to construct the Drift Creek Dam. For obvious reasons, my clients oppose this project.

Marion County and the City of Silverton jointly submitted an application for a pilot grant under the place-based planning program requesting \$300,000 to conduct planning in the Pudding River Watershed. My clients are not opposed to the proposal for a collaborative, place-based water resources planning effort for the Pudding watershed, which includes their lands. They appreciate that surface and groundwater supplies in the watershed are limited in terms of meeting new municipal, agricultural, and instream water demands. However, my clients strongly oppose any further public funding that would aid EVWD's efforts to build the Drift Creek Dam and Reservoir on their property.

EVWD is listed as one of the members of the Pudding River Watershed Planning Group in the grant application. Eleven of the seventeen reports and studies included in the application's list of existing studies are EVWD reports and studies related to the Drift Creek Project. The meeting that was held to discuss the application was facilitated by the same person who is coordinating the Drift Creek Project planning effort for the District. My clients question

¹ My clients include David Doerfler, Norbert Dominick, John and Sharon Fox, Tom and Karen Fox, Bruce Jaquet, Kathleen Jaquet, Steve Lierman, Cheri Perry-Harbour, Robert Qualey, Joel Rue, and Zach Taylor.

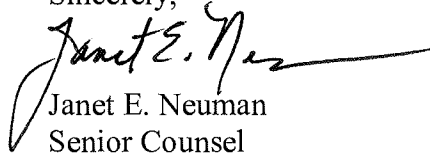
Ms. Harmony Burright
January 21, 2016
Page 2

whether EVWD is really interested in a truly collaborative process to evaluate all of the competing needs in the Pudding River watershed and reach agreement on the best projects to accommodate those needs. The District has already staked out the direction it intends to go, and it is important that it not be allowed to use the place-based planning program to take the rest of the group along for the ride.

In this regard, the Pudding application is distinguishable from the other 14 applications. Admittedly, this comparison is based only on reading the application letters rather than on direct knowledge about the proposals, but nonetheless the other applications propose planning processes that appear more open-ended and preliminary. Many of them contain a broader array of partners representing a wider range of interests. There are no hints in any of the other applications that any of the listed partners are already actively pursuing a particular water supply project—especially not a project with the level of opposition that EVWD's project has encountered.

If the Department awards a place-based planning grant to the Pudding River Watershed Planning Group, it is critical that the funds be used to support a truly collaborative process involving the full range of interests in the watershed, including broad-based agricultural interest groups and agricultural producers who are not represented by EVWD, such as my clients. It is particularly important that the process not be unduly influenced by pre-determined conclusions about appropriate projects by EVWD or any other party to the process. Thank you for considering my clients' concerns.

Sincerely,



Janet E. Neuman
Senior Counsel

JEN/sdg

037082/00001/6974020v1